



Light Oaks Road

Salford



£290,000



# Light Oaks Road

Salford

\*Significantly Single Storey Extended Three Bedroom, Semi-Detached Family Home! Boasting Three Reception Rooms, Two Bathrooms and Solar Panels! Within Walking Distance of Salford Royal Hospital\* Council Tax band: B

Tenure: Freehold

- Significantly Single Storey Extended, Three Bedroom Semi-Detached Property
- Boasting Three Reception Rooms
- Modern Fitted Kitchen and a Separate Utility Room
- Modern Three-Piece Bathroom
- Benefits from an Additional Three-Piece Shower Room Downstairs
- Three Well-Proportioned Bedrooms
- Driveway for Off-Road Parking
- Charming Garden with Mature Plants, Artificial Grass, Paving and Stones
- Within Walking Distance of Salford Royal Hospital and Light Oaks Primary School
- Close to Excellent Transport Links into Salford Quays, Media City and Manchester City Centre



HILLS



### Entrance Hallway

### Reception Room One

18' 8" x 10' 11" (5.68m x 3.33m)

### Reception Room Two

9' 11" x 7' 6" (3.03m x 2.28m)

### Utility Room

10' 9" x 6' 6" (3.28m x 1.97m)

### Downstairs Shower Room

6' 9" x 6' 7" (2.06m x 2.00m)

### Dining Room

13' 1" x 11' 5" (3.98m x 3.47m)

### Kitchen

13' 1" x 5' 7" (3.99m x 1.69m)

### Landing

### Bedroom One

10' 11" x 8' 8" (3.33m x 2.63m)

### Bedroom Two

10' 11" x 9' 8" (3.32m x 2.94m)

### Bedroom Three

6' 11" x 6' 7" (2.10m x 2.00m)

### Bathroom

6' 6" x 5' 7" (1.98m x 1.70m)



HILLS





### Entrance Hallway

### Reception Room One

18' 8" x 10' 11" (5.68m x 3.33m)

### Reception Room Two

9' 11" x 7' 6" (3.03m x 2.28m)

### Utility Room

10' 9" x 6' 6" (3.28m x 1.97m)

### Downstairs Shower Room

6' 9" x 6' 7" (2.06m x 2.00m)

### Dining Room

13' 1" x 11' 5" (3.98m x 3.47m)

### Kitchen

13' 1" x 5' 7" (3.99m x 1.69m)

### Landing

### Bedroom One

10' 11" x 8' 8" (3.33m x 2.63m)

### Bedroom Two

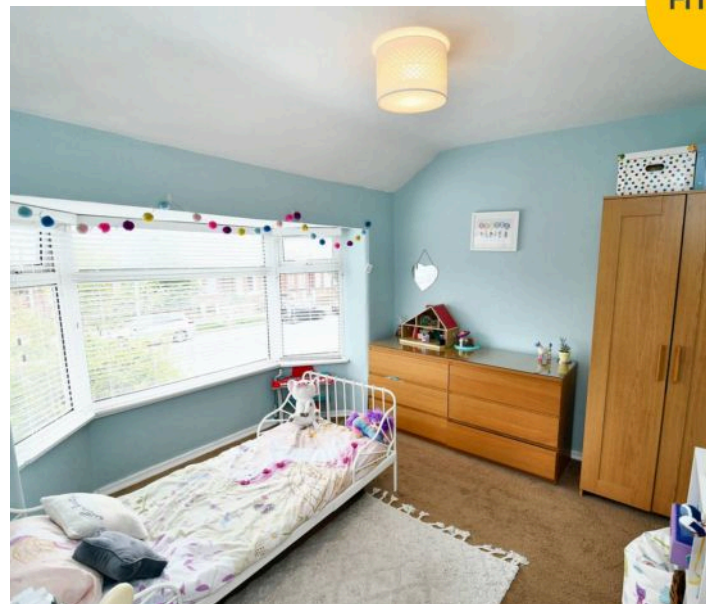
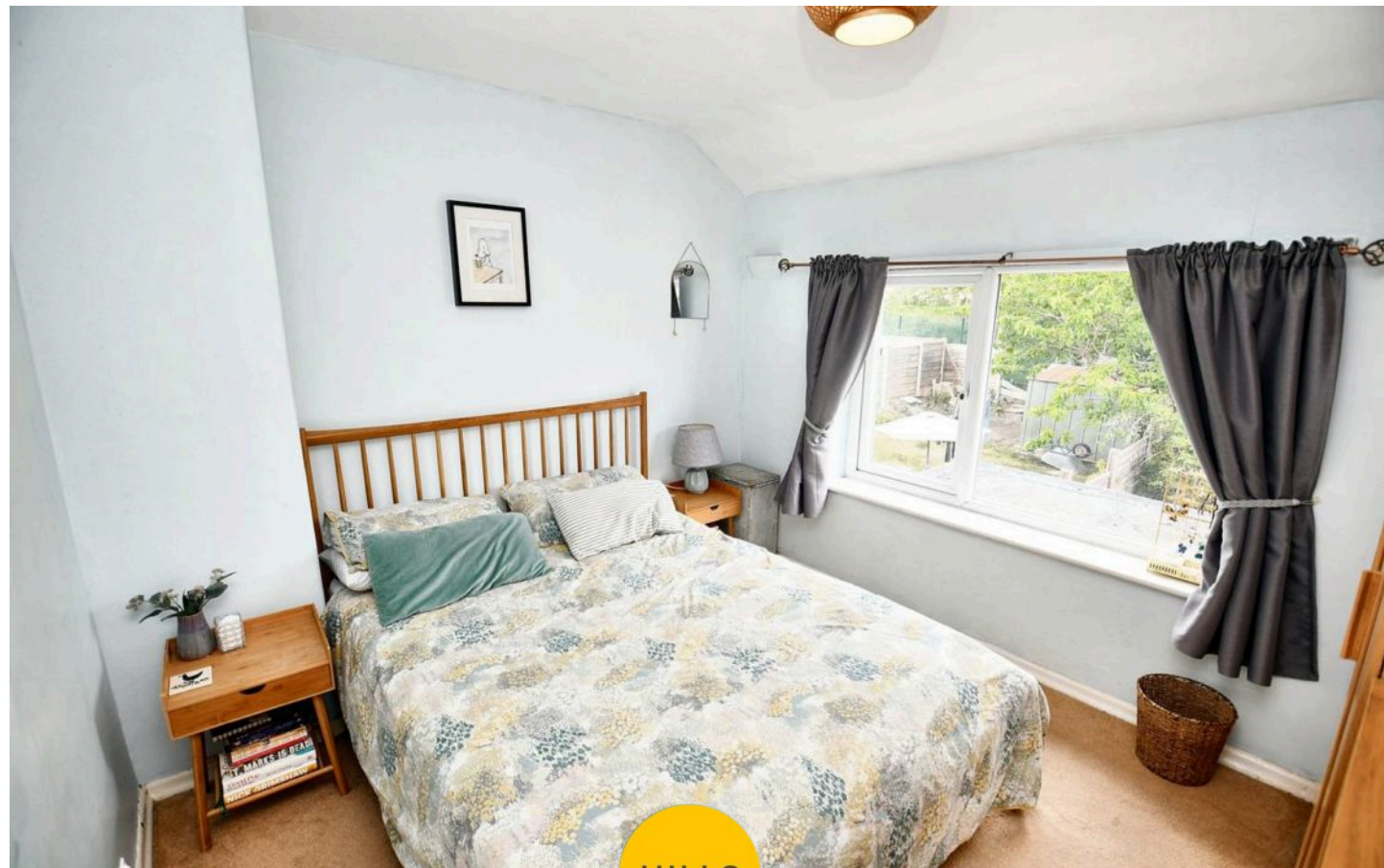
10' 11" x 9' 8" (3.32m x 2.94m)

### Bedroom Three

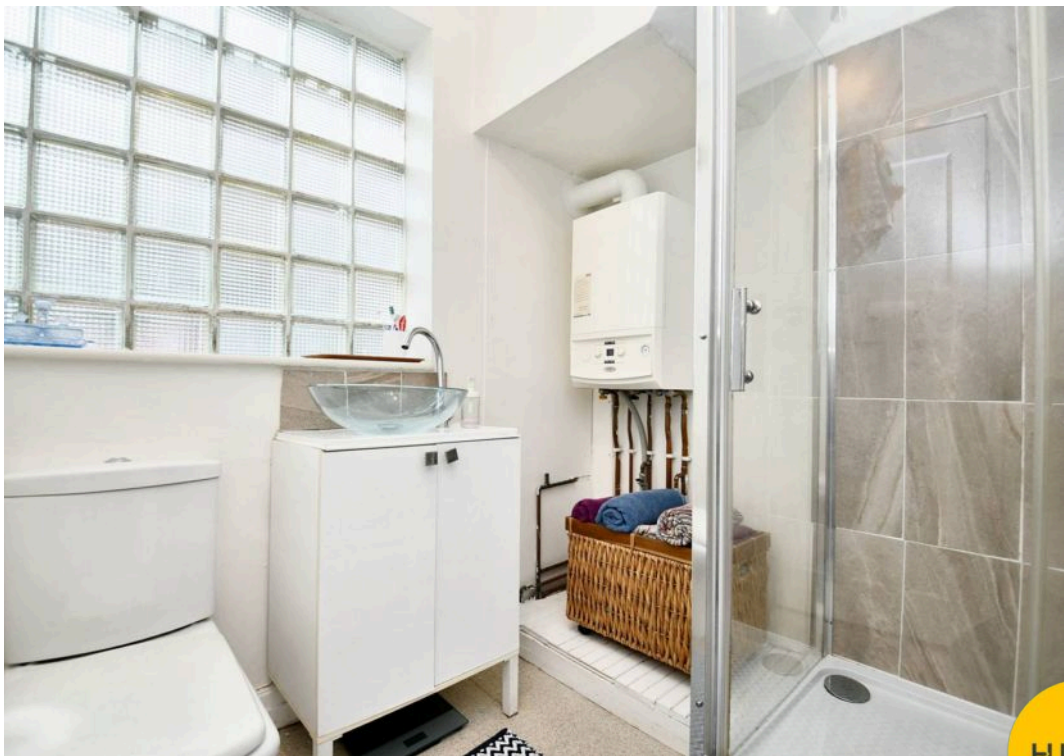
6' 11" x 6' 7" (2.10m x 2.00m)

### Bathroom

6' 6" x 5' 7" (1.98m x 1.70m)



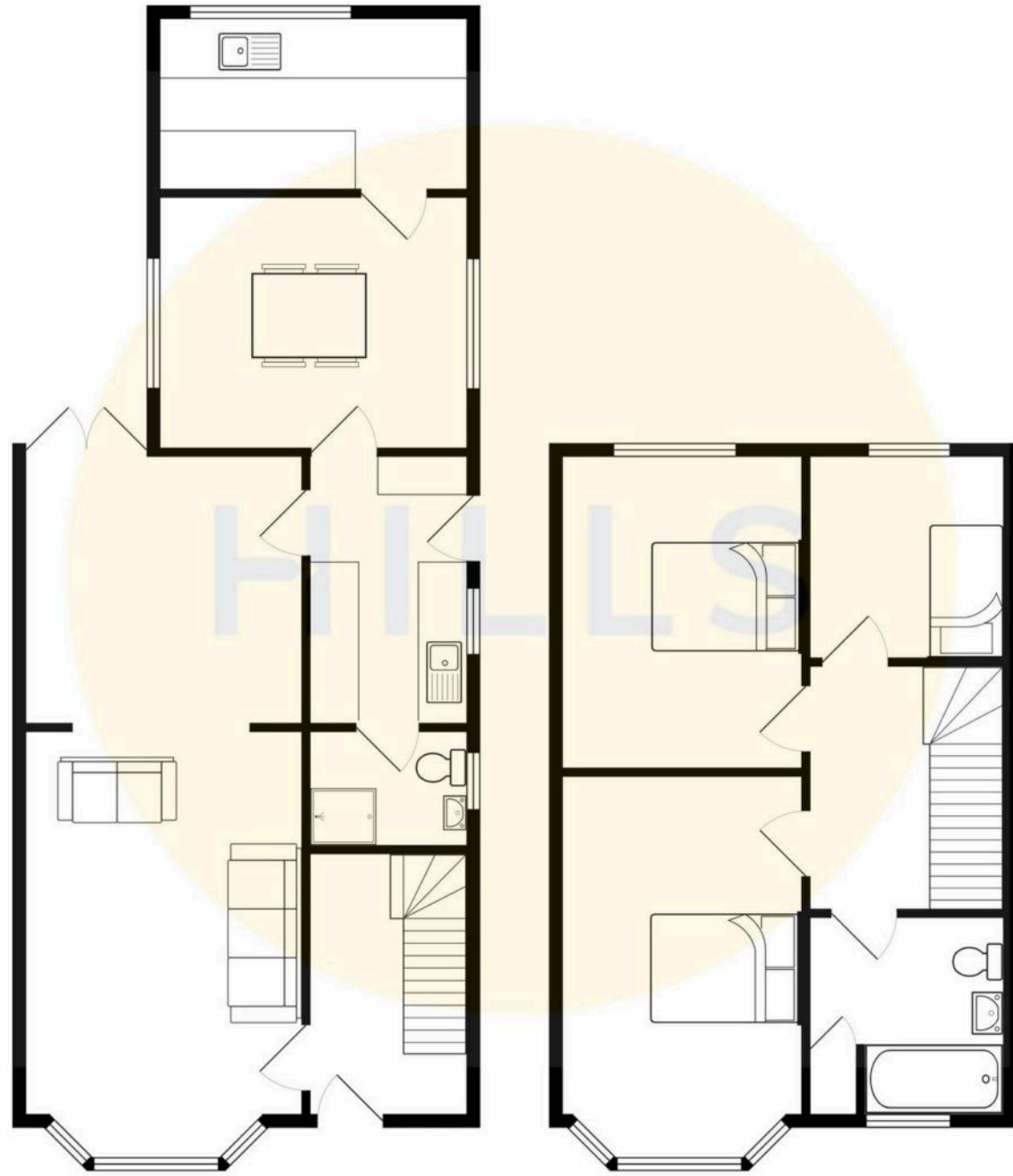




HILLS











## Hills | Salfords Estate Agent

Hills Residential, Sentinel House Albert Street – M30 0SS

0161 707 4900

[sales@hills.agency](mailto:sales@hills.agency)

[www.hills.agency/](http://www.hills.agency/)



THE PROPERTY MISDESCRIPTIONS ACT 1991 The Agent has not tested any apparatus, equipment, fixtures and fittings or services and so cannot verify that they are in working order or fit for the purpose. A Buyer is advised to obtain verification from their Solicitor or Surveyor. References to the Tenure of a Property are based on information supplied by the Seller. The Agent has not had sight of the title documents. A Buyer is advised to obtain verification from their Solicitor. You are advised to check the availability of this property before travelling any distance to view. Every effort and precaution has been made to ensure these particulars are correct and not misleading but their accuracy is not guaranteed nor do they form part of any contract. If there is any point which is of particular importance to you, please contact us and we will provide any information you require. This is advisable, particularly if you intend to travel some distance to view the property. The mention of any appliances and services within these details does not imply that they are in full and efficient working order. These particulars are in draft form awaiting Vendors confirmation of their accuracy. These details must therefore be taken as a guide only.