

Radford Drive, Irlam

Manchester

HILLS

Offers in Region of £290,000

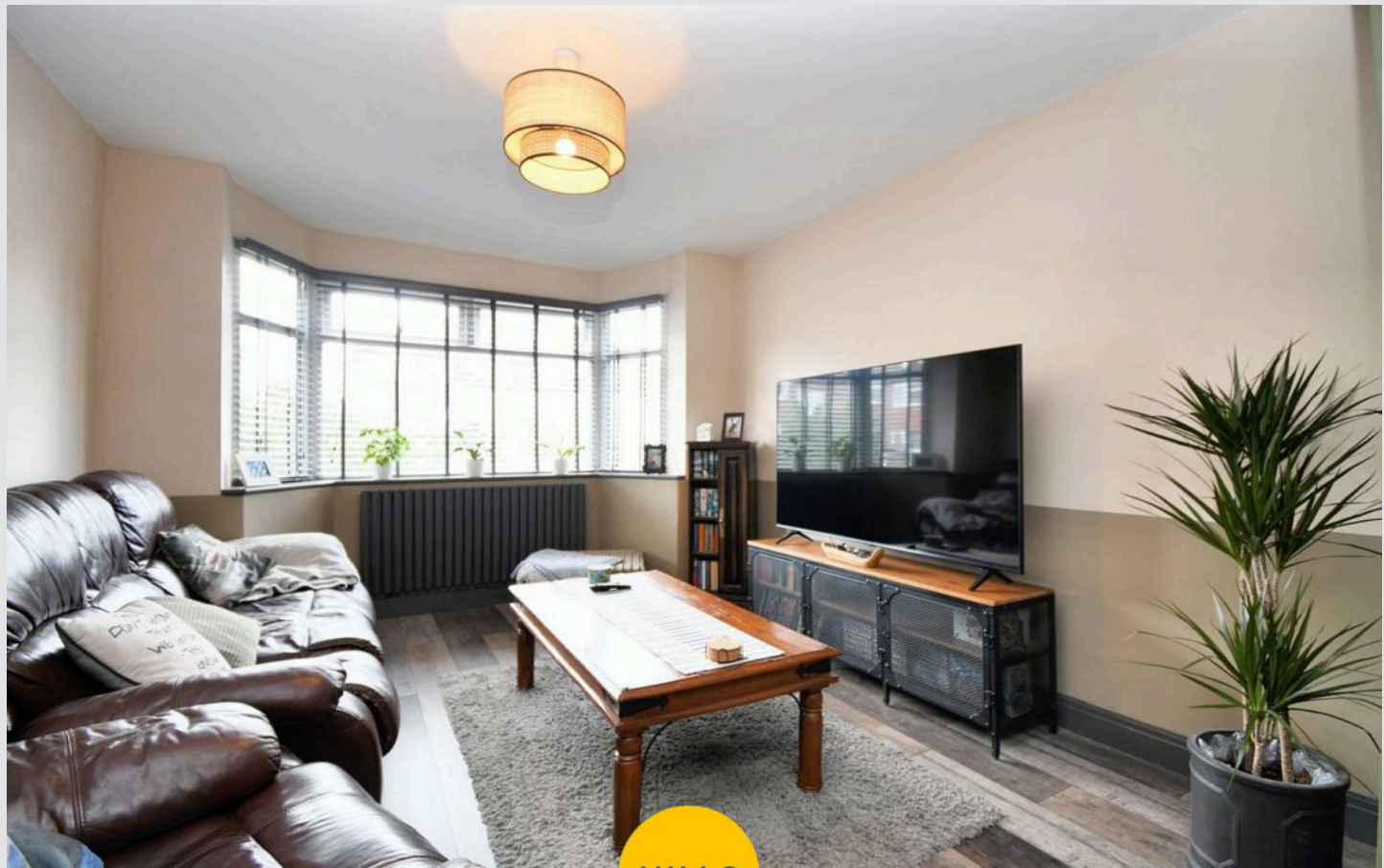
Radford Drive

Irlam, Manchester

Beautifully presented three bed semi-detached house on a quiet cul-de-sac. Fully renovated, modern design, spacious living areas, extended kitchen, three large bedrooms, luxury shower room, off-road parking, garage, gardens. Close to amenities, ideal for first-time buyers or families. Council Tax band: C

Tenure: Leasehold

- Extended Three Bedroom Semi Situated on a Quiet Cul De Sac
- Undergone a Full Renovation Since 2019
- Bay Fronted Lounge, Open Plan to the Dining Space with Eye Catching Log Burner
- Extended Shaker Style Kitchen with Integrated Appliances Installed 2024
- Three Deceptively Spacious Bedrooms
- Stunning Shower Room with His & Her Sinks
- Off Road Parking for Multiple Cars & Garage
- Well Kept Gardens to the Front & Rear
- Just a Short Walk to Local Amenities
- Perfect First Time Buy or Family Home



HILLS

Entrance Hallway

Entered via a uPVC front door. Complete with a ceiling light point, wall mounted radiator and laminate flooring. Fitted with laminate flooring.

Lounge

11' 2" x 12' 10" (3.40m x 3.91m)

Complete with a ceiling light point, double glazed window and laminate flooring.

Dining Room

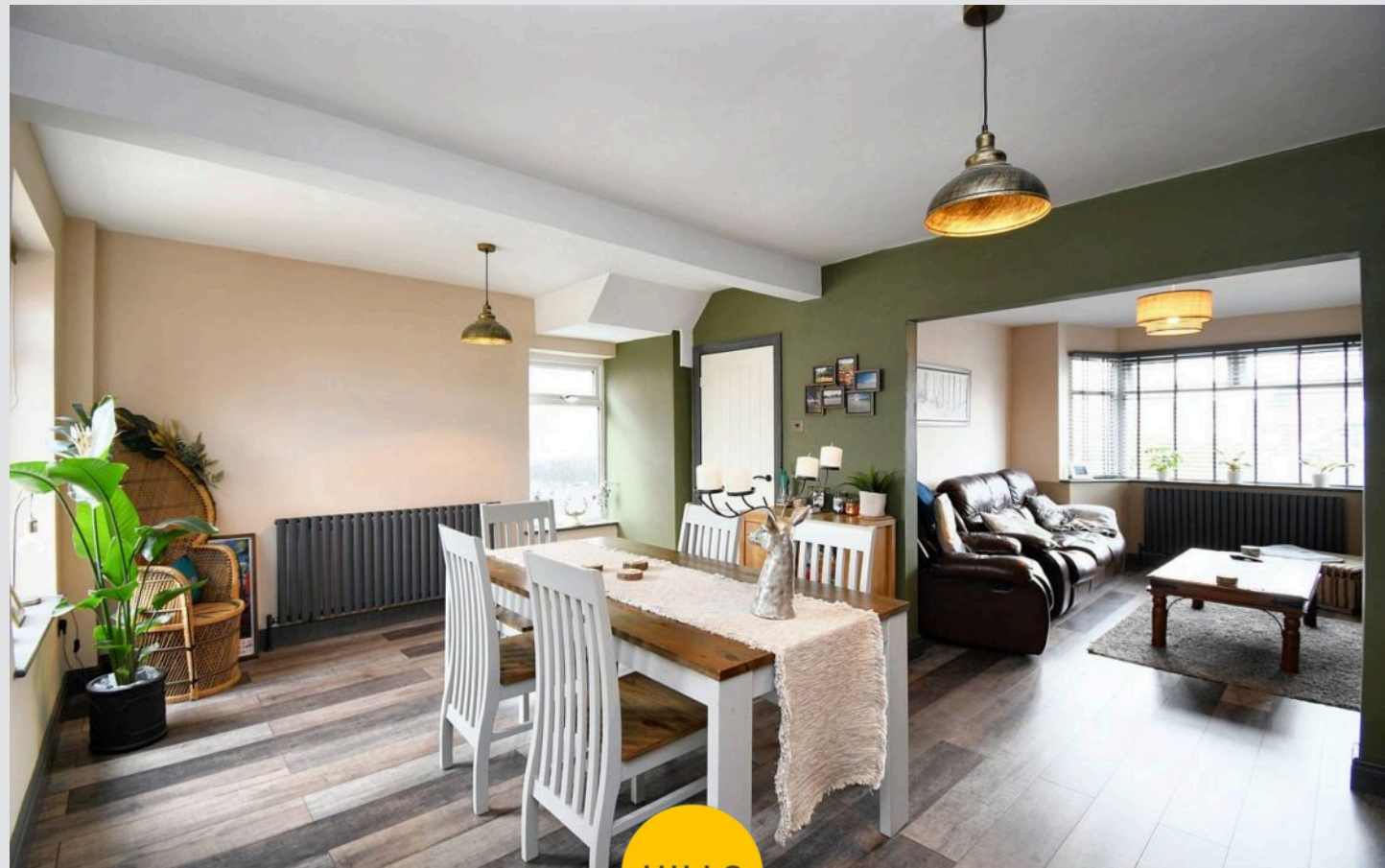
17' 3" x 11' 7" (5.27m x 3.54m)

Featuring a log burner. Complete with two ceiling light points, two double glazed windows and wall mounted radiator. Fitted with laminate flooring.

Kitchen

9' 7" x 9' 7" (2.91m x 2.93m)

Featuring complementary wall and base units with wooden worktops and composite sink. Integral electric hob, fridge freezer, dishwasher and washing machine. Complete with ceiling spotlights, double glazed window and wall mounted radiator. Fitted with uPVC door and lino flooring.



Landing

Complete with a ceiling light point, double glazed window and carpet flooring. Access to a partially boarded loft via dropdown ladder.

Bedroom One

10' 8" x 12' 11" (3.26m x 3.94m)

Complete with a ceiling light point, double glazed bay window and wall mounted radiator. Fitted with carpet flooring.

Bedroom Two

11' 2" x 11' 7" (3.40m x 3.52m)

Complete with a ceiling light point, double glazed window and wall mounted radiator. Fitted with laminate flooring.

Bedroom Three

6' 2" x 7' 10" (1.88m x 2.40m)

Complete with a ceiling light point, double glazed window and wall mounted radiator. Fitted with laminate flooring.

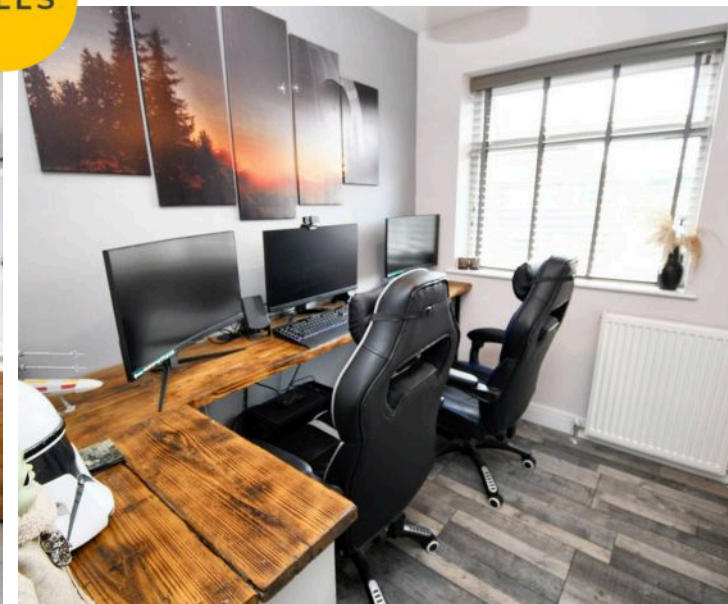
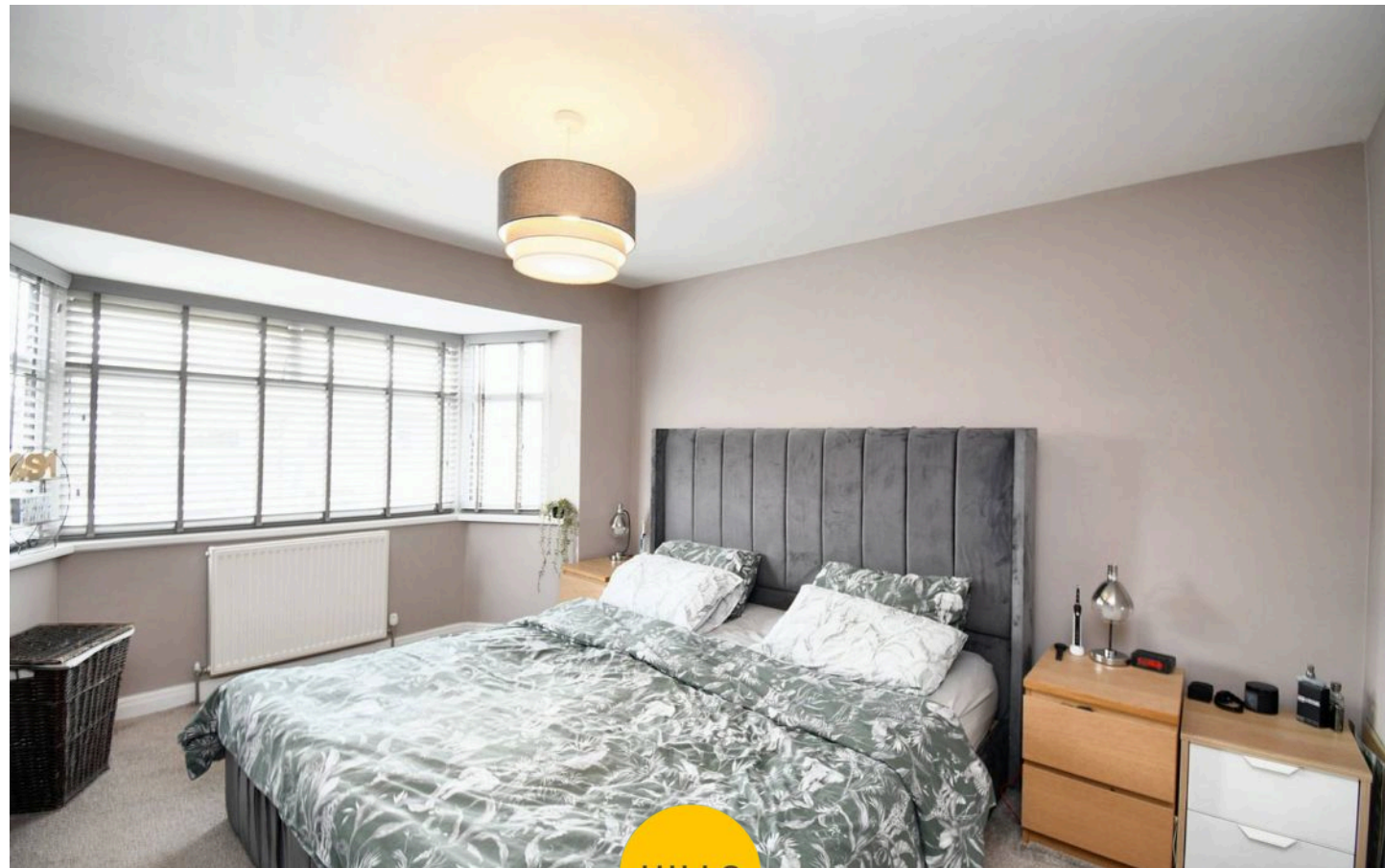
Bathroom

7' 1" x 8' 3" (2.15m x 2.51m)

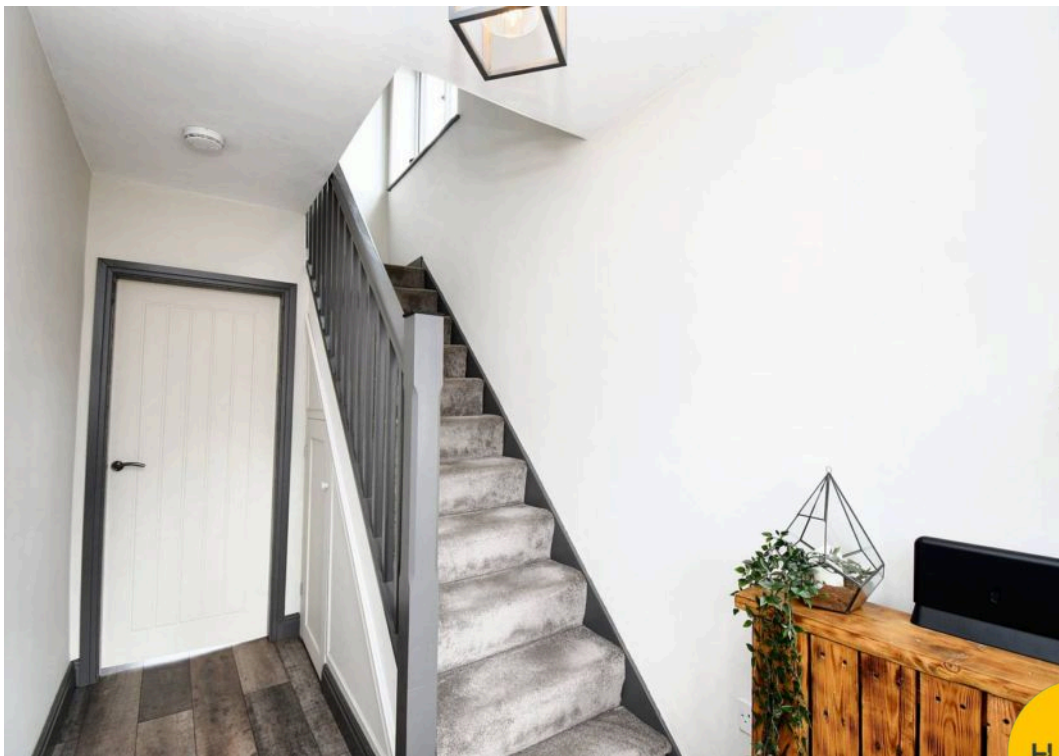
Featuring a three piece suite including a shower, his and hers sinks and W.C. Complete with a ceiling light point, double glazed window, electric mirror and heated towel rail. Fitted with part tiled walls and tiled flooring.

External

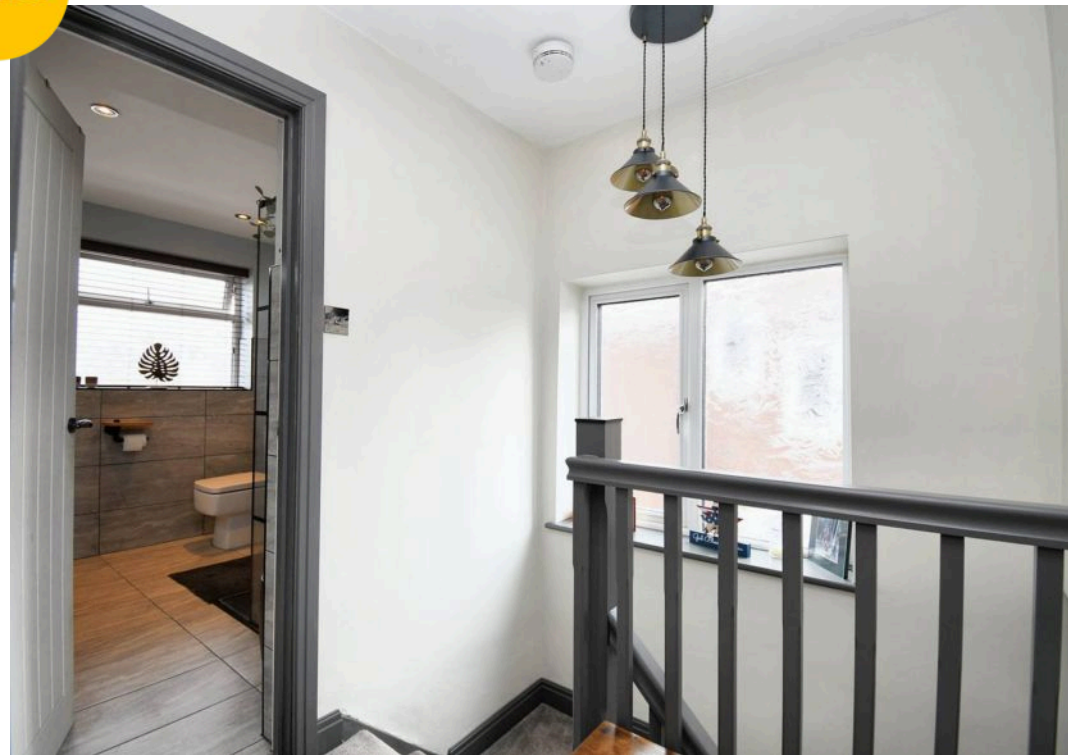
To the front of the property is off road parking for multiple cars and lawn with planted borders. To the rear of the property is a garden with block paved patio, detached garage and lawn with planted borders.

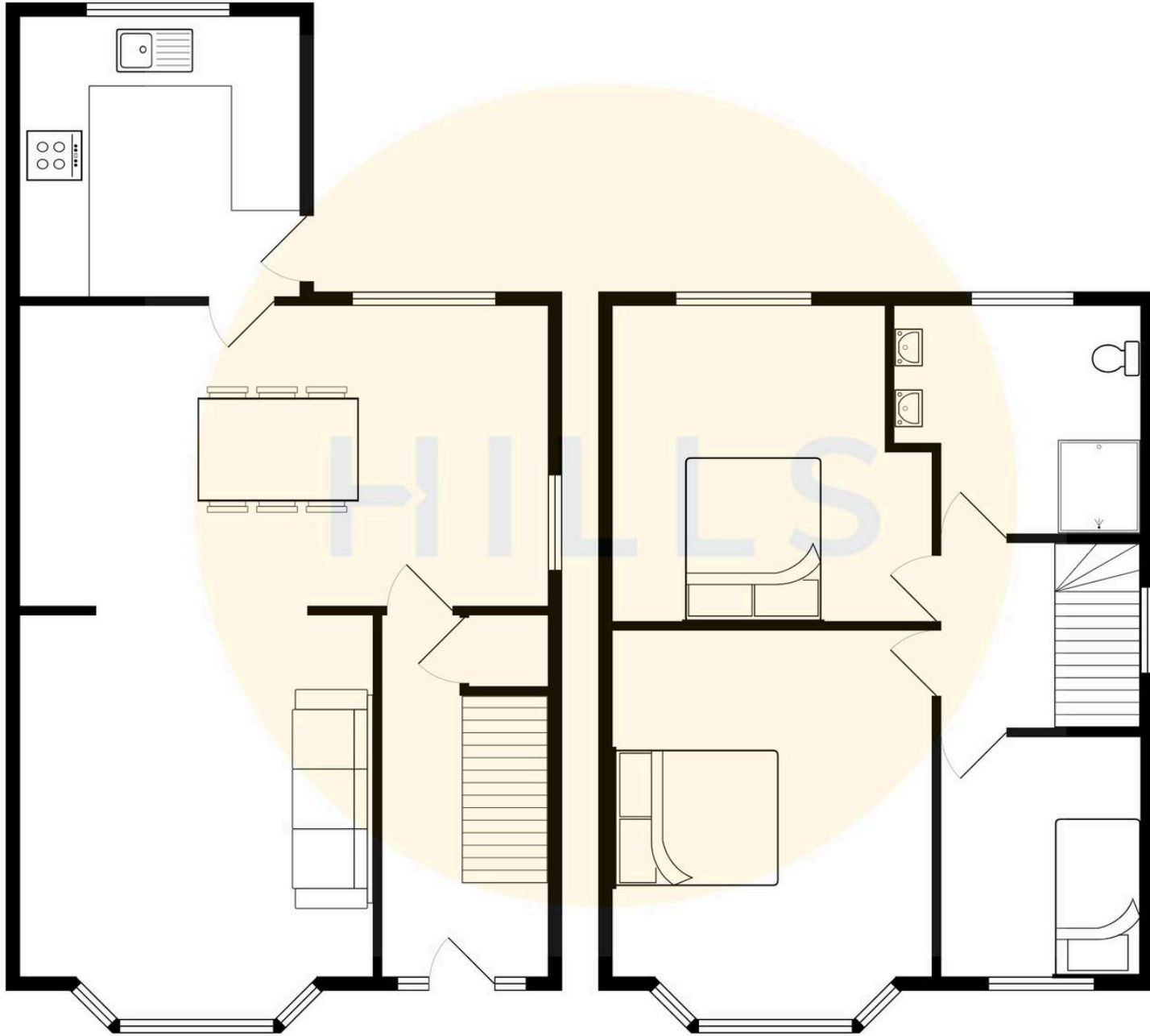


HILLS



HILLS







Hills | Salfords Estate Agent

Hills Residential, Sentinel House Albert Street – M30 0SS

0161 707 4900

sales@hills.agency

www.hills.agency/



THE PROPERTY MISDESCRIPTIONS ACT 1991 The Agent has not tested any apparatus, equipment, fixtures and fittings or services and so cannot verify that they are in working order or fit for the purpose. A Buyer is advised to obtain verification from their Solicitor or Surveyor. References to the Tenure of a Property are based on information supplied by the Seller. The Agent has not had sight of the title documents. A Buyer is advised to obtain verification from their Solicitor. You are advised to check the availability of this property before travelling any distance to view. Every effort and precaution has been made to ensure these particulars are correct and not misleading but their accuracy is not guaranteed nor do they form part of any contract. If there is any point which is of particular importance to you, please contact us and we will provide any information you require. This is advisable, particularly if you intend to travel some distance to view the property. The mention of any appliances and services within these details does not imply that they are in full and efficient working order. These particulars are in draft form awaiting Vendors confirmation of their accuracy. These details must therefore be taken as a guide only.