



Repeat House, Bright Road

Manchester

HILLS

Guide Price £360,000

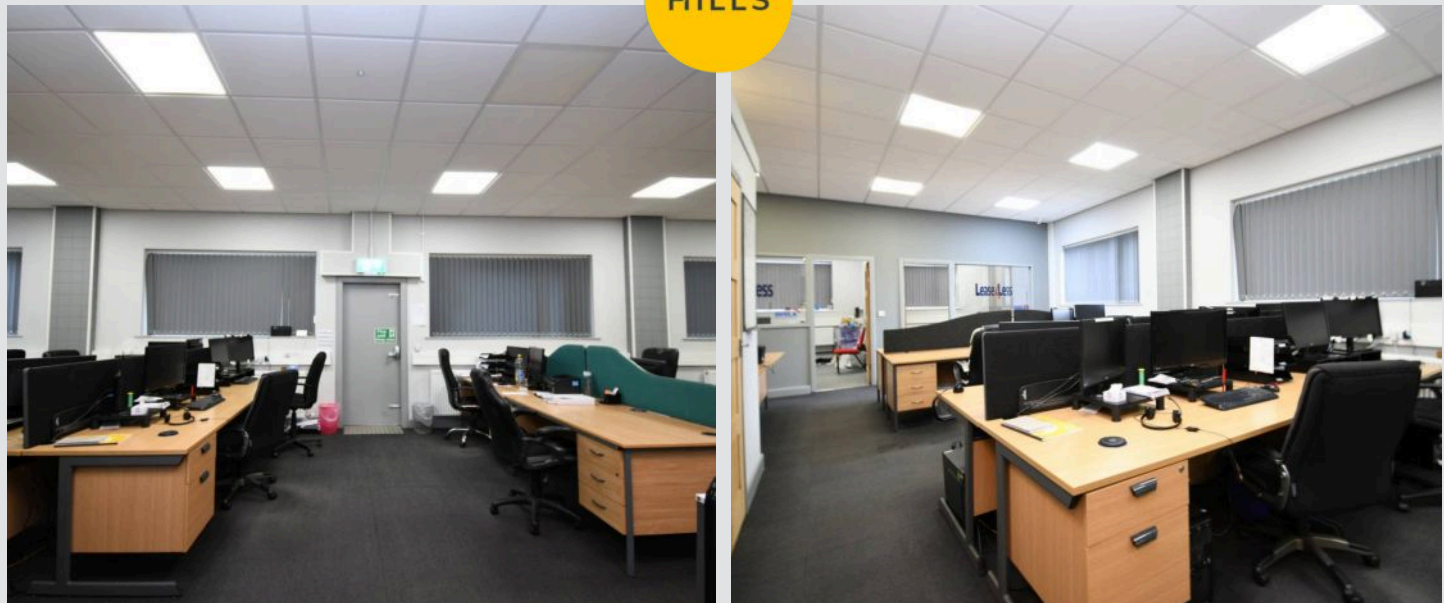
Repeat House

Bright Road, Manchester

Take a look at this SPACIOUS COMMERCIAL PROPERTY offering lots of space throughout, comprising of multiple separate offices and units! Located close to excellent transport links and other amenities. Council Tax band: A

Tenure: Freehold

- To be sold by Hills Property Auctions!
- Spacious Commercial property comprising of multiple separate offices and units
- Shared kitchen facilities
- Separate ladies and gents W.C.
- Great investment opportunity!
- Situated in a popular area and located on a quiet cul-de-sac
- On street parking
- Within easy access of excellent transport links and within easy reach of motorway network, eccles metro link and railway stations!



Hallway

12' 0" x 7' 4" (3.66m x 2.24m)

Suite One

30' 4" x 20' 1" (9.25m x 6.12m)

Suite 2a

18' 9" x 11' 6" (5.72m x 3.51m)

Suite 2b

19' 3" x 10' 2" (5.87m x 3.10m)

Suite 3

11' 4" x 7' 4" (3.45m x 2.24m)

Suite 3 - Extra Room

7' 4" x 7' 0" (2.24m x 2.13m)

Suite 4

10' 4" x 9' 5" (3.15m x 2.87m)

Boiler Room

10' 4" x 9' 9" (3.15m x 2.97m)

Suite 5a

15' 2" x 8' 2" (4.62m x 2.49m)

Suite 5b

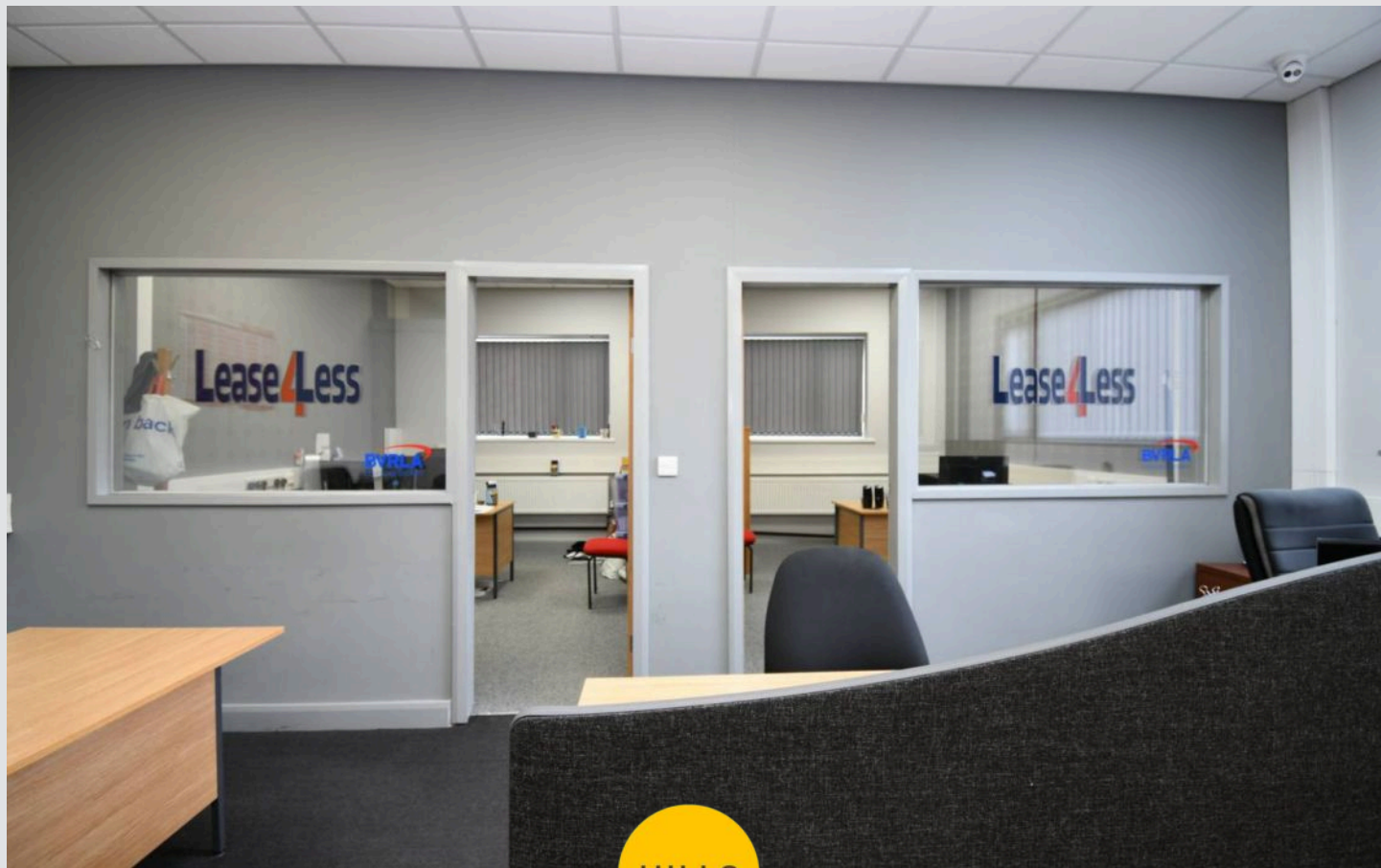
16' 0" x 12' 6" (4.88m x 3.81m)

Suite 6

23' 4" x 16' 2" (7.11m x 4.93m)

Suite 7

16' 1" x 12' 9" (4.90m x 3.89m)



Gentlemen and Ladies Toilets

Suite 8 & 9

26' 3" x 17' 6" (8.00m x 5.33m)

Extra Room

21' 2" x 11' 5" (6.45m x 3.48m)

Meeting Room

17' 7" x 10' 2" (5.36m x 3.10m)

Office

12' 7" x 7' 1" (3.84m x 2.16m)

Suite 10

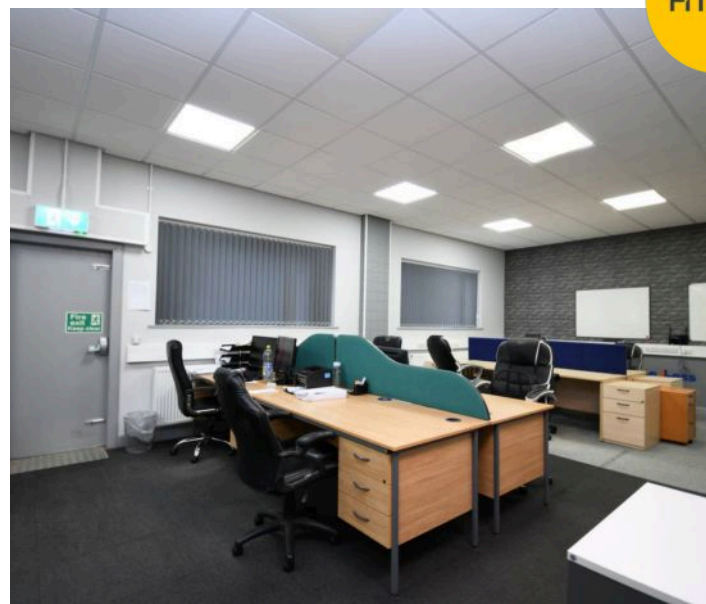
49' 6" x 19' 8" (15.09m x 5.99m)

Office

12' 5" x 9' 7" (3.78m x 2.92m)

Office

12' 1" x 9' 7" (3.68m x 2.92m)





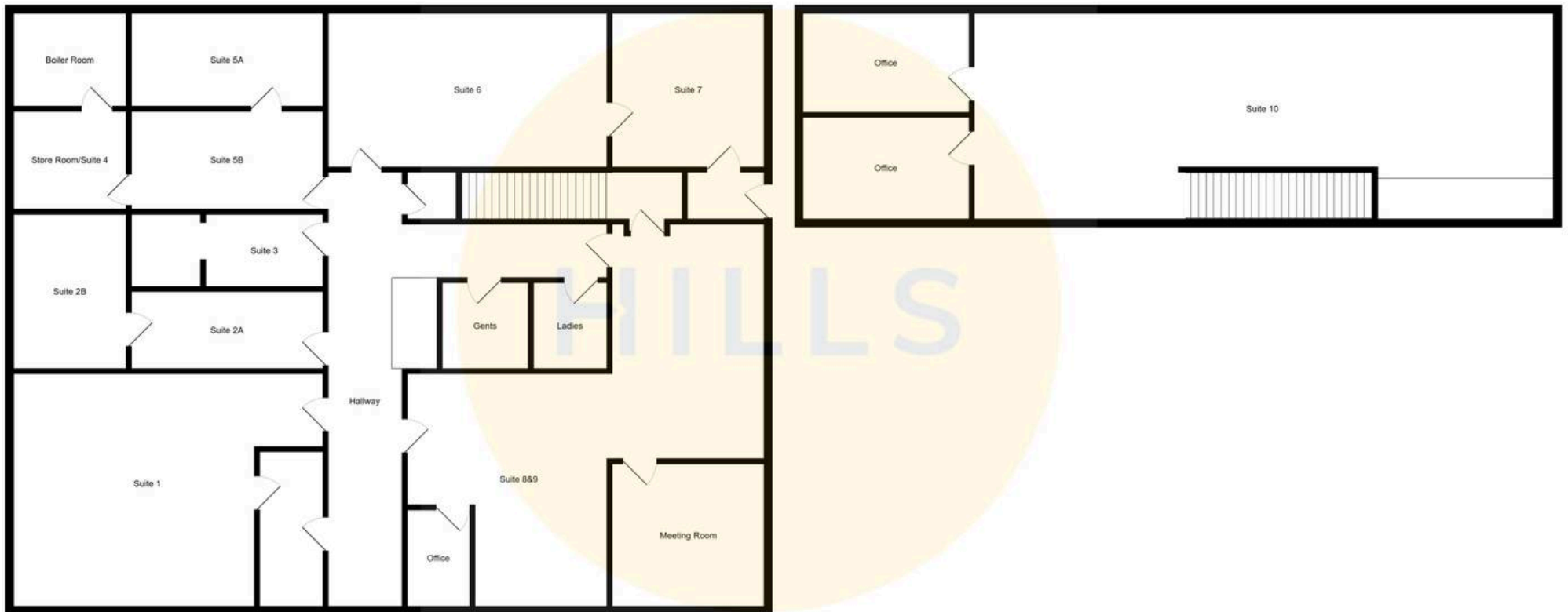
HILLS





HILLS







Hills | Salfords Estate Agent

Hills Residential, Sentinel House Albert Street – M30 0SS

0161 707 4900

sales@hills.agency

www.hills.agency/



THE PROPERTY MISDESCRIPTIONS ACT 1991 The Agent has not tested any apparatus, equipment, fixtures and fittings or services and so cannot verify that they are in working order or fit for the purpose. A Buyer is advised to obtain verification from their Solicitor or Surveyor. References to the Tenure of a

Property are based on information supplied by the Seller. The Agent has not had sight of the title documents. A Buyer is advised to obtain verification from their Solicitor. You are advised to check the availability of this property before travelling any distance to view. Every effort and precaution has been made to ensure these particulars are correct and not misleading but their accuracy is not guaranteed nor do they form part of any contract. If there is any point which is of particular importance to you, please contact us and we will provide any information you require. This is advisable, particularly if you intend to travel some distance to view the property. The mention of any appliances and services within these details does not imply that they are in full and efficient working order. These particulars are in draft form awaiting Vendors confirmation of their accuracy. These details must therefore be taken as a guide only.