



Ellesmere Green, Eccles

Manchester



In Excess of £180,000

Ellesmere Green

Eccles, Manchester

Charming ground floor apartment in Monton Village with open plan living space, modern kitchen, Two bedrooms, updated bathroom, communal gardens, and parking. Surrounded by amenities, shops, and transport links. Ideal for first-time buyers, investors, or downsizers.

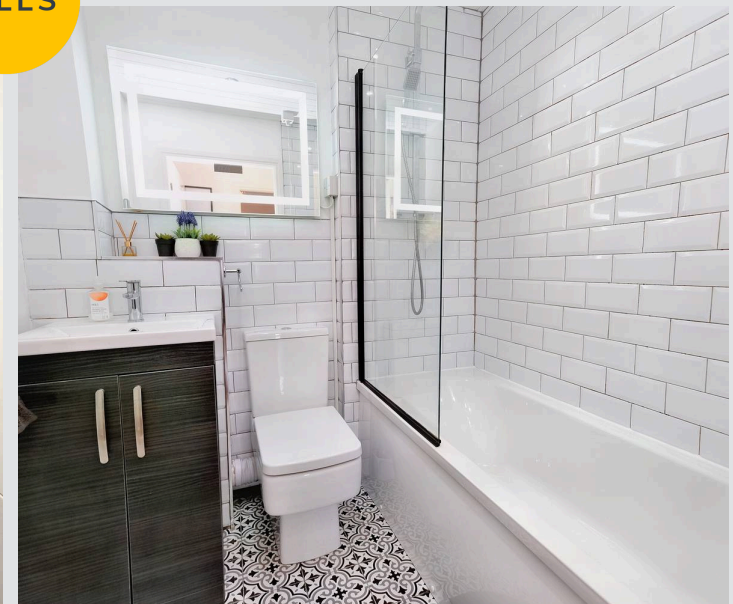
Council Tax band: B

Tenure: Leasehold

- Perfect First Time Buy or Downsize
- Located in the Heart of Monton Village, Surrounded by a Plethora of Amenities
- Ground Floor Apartment
- Open Plan Kitchen, Living & Dining Space
- Two Generously Sized Bedrooms
- Well Kept Communal Areas and Gardens
- Allocated Residents Parking Spaces
- Well Connected by Public Transport & Motorway Links
- Modern Bathroom Installed around Three Years ago



HILLS



Hallway

Ceiling light point, electric radiator and storage cupboard.

Lounge/Diner

16' 1" x 10' 2" (4.90m x 3.10m)

Two ceiling light points, double glazed window, electric heater and power point.

Kitchen

10' 6" x 5' 7" (3.20m x 1.70m)

Fitted with a range of wall and base units with complementary work surfaces and integral sink and drainer unit. Integrated oven, hob, dishwasher and fridge freezer. Ceiling light point, double glazed window and power point.

Bedroom One

10' 6" x 8' 10" (3.20m x 2.70m)

Ceiling light point, double glazed windows, fitted wardrobes, electric radiator and power point.

Bedroom Two

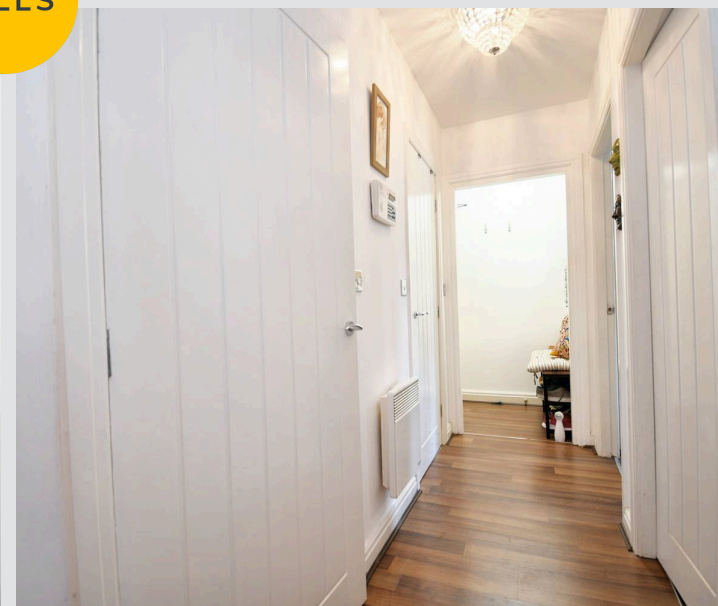
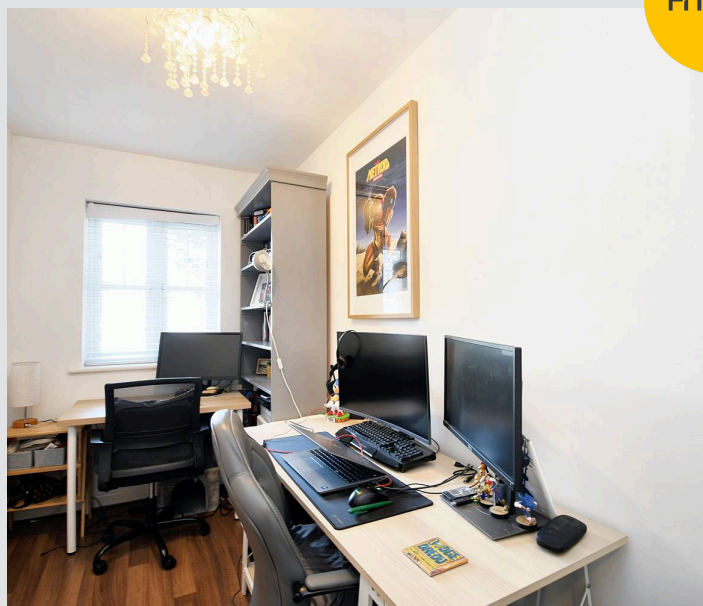
11' 2" x 5' 7" (3.40m x 1.70m)

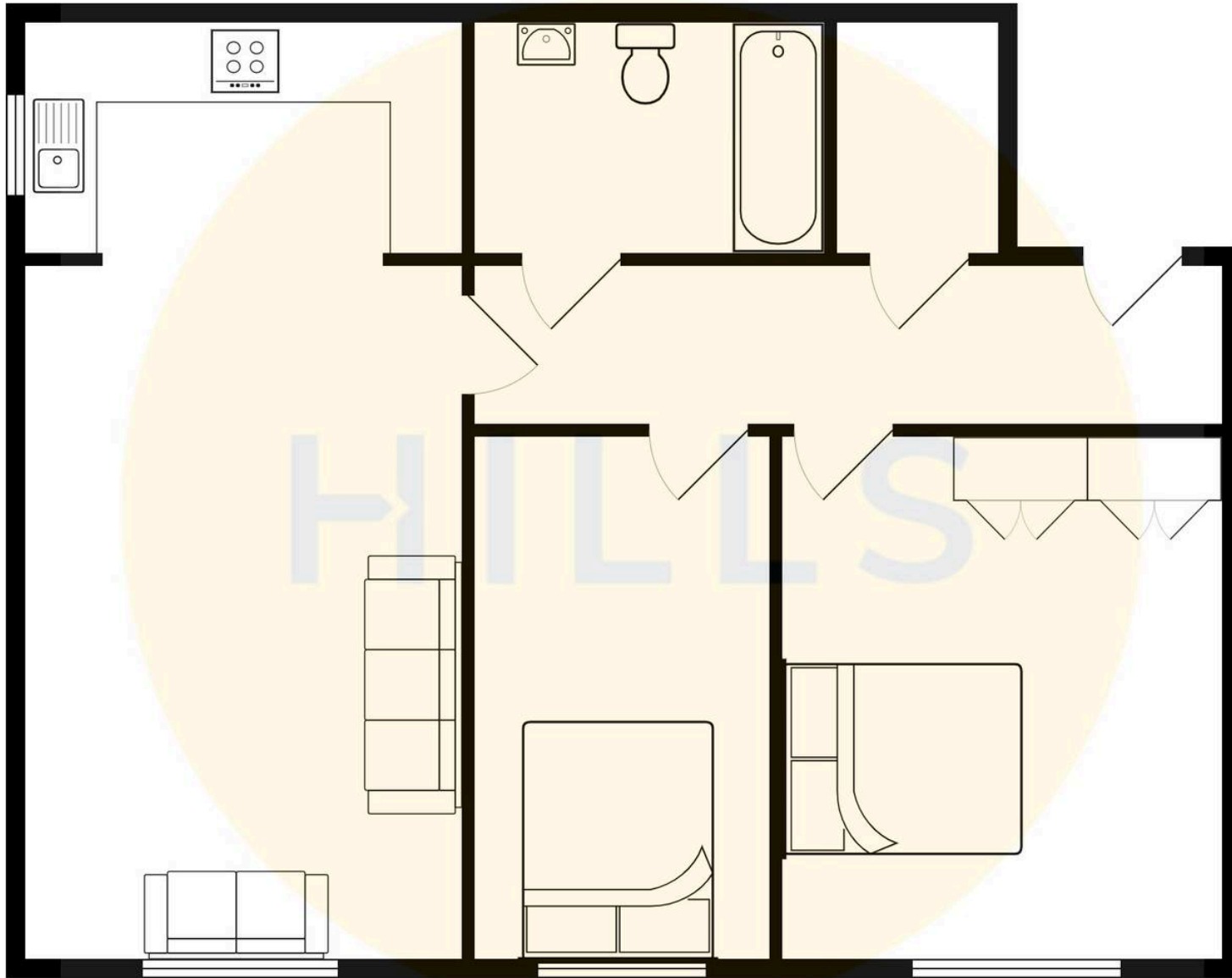
Ceiling light point, double glazed window, electric radiator and power point.

Bathroom

5' 11" x 5' 7" (1.80m x 1.70m)

Fitted with a three piece suite including a hand wash basin, WC and bath with overhead shower. Ceiling spotlights and heated towel rail.







HILLS

Hills | Salfords Estate Agent

Hills Residential, Sentinel House Albert Street – M30 0SS

0161 707 4900

sales@hills.agency

www.hills.agency/



THE PROPERTY MISDESCRIPTIONS ACT 1991 The Agent has not tested any apparatus, equipment, fixtures and fittings or services and so cannot verify that they are in working order or fit for the purpose. A Buyer is advised to obtain verification from their Solicitor or Surveyor. References to the Tenure of a Property are based on information supplied by the Seller. The Agent has not had sight of the title documents. A Buyer is advised to obtain verification from their Solicitor. You are advised to check the availability of this property before travelling any distance to view. Every effort and precaution has been made to ensure these particulars are correct and not misleading but their accuracy is not guaranteed nor do they form part of any contract. If there is any point which is of particular importance to you, please contact us and we will provide any information you require. This is advisable, particularly if you intend to travel some distance to view the property. The mention of any appliances and services within these details does not imply that they are in full and efficient working order. These particulars are in draft form awaiting Vendors confirmation of their accuracy. These details must therefore be taken as a guide only.