

Parrin Lane, Eccles

Manchester

HILLS

In Excess of £240,000

Parrin Lane

Eccles, Manchester

Fantastic THREE BEDROOM TERRACED PROPERTY WITHIN WALKING DISTANCE OF MONTON VILLAGE! The property benefits from a MODERN KITCHEN, THREE SPACIOUS BEDROOMS and OFF ROAD PARKING TO THE REAR!

Council Tax band: A

Tenure: Freehold

- Spacious three bedroom terraced home
- Within walking distance to Monton Village
- Gated off-road parking to the rear
- Modern three piece bathroom suite
- Contemporary fitted kitchen
- Living room and separate dining area
- Three generous bedrooms
- Perfect for first time buyers and families
- Viewing is highly recommended!
- Within easy access of excellent transport links into Salford Quays, Media City and Manchester City Centre



HILLS



Entrance Hallway

11' 11" x 3' 4" (3.62m x 1.01m)

Complete with ceiling spotlights, wall mounted radiator and laminate flooring.

Reception Room One

15' 5" x 10' 11" (4.70m x 3.34m)

Complete with a ceiling light point, double glazed window and wall mounted radiator. Fitted with laminate flooring.

Reception Room Two

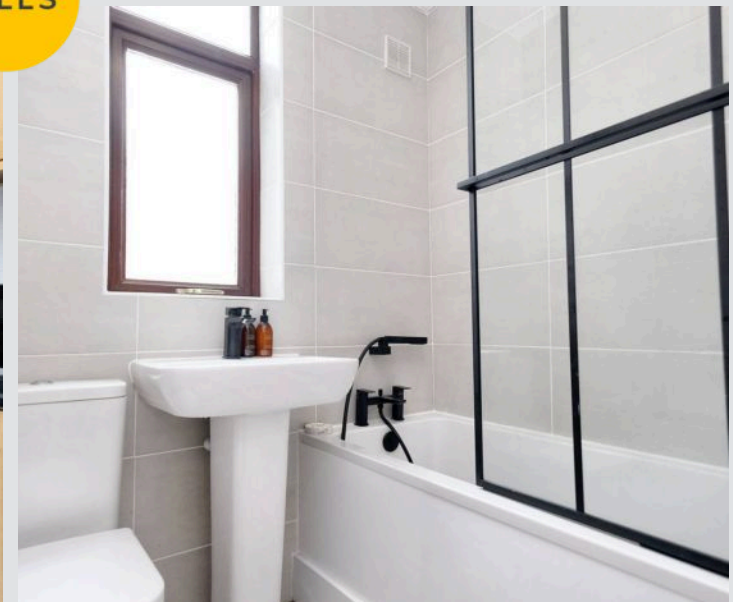
14' 4" x 11' 3" (4.37m x 3.44m)

Complete with ceiling spotlights, patio doors and wall mounted radiator. Fitted with laminate flooring.

Kitchen

16' 6" x 8' 0" (5.02m x 2.45m)

Featuring complementary wall and base units with cooker and extractor. Space for a fridge freezer and washing machine. Complete with a ceiling light point double glazed window and lino flooring.



Bedroom One

12' 3" x 13' 6" (3.74m x 4.11m)

Featuring fitted wardrobes. Complete with a ceiling light point, double glazed window and wall mounted radiator. Fitted with carpet flooring.

Bedroom Two

10' 9" x 12' 11" (3.27m x 3.94m)

Complete with a ceiling light point, double glazed window and wall mounted radiator. Fitted with carpet flooring.

Bedroom Three

9' 8" x 8' 4" (2.94m x 2.55m)

Complete with a ceiling light point, double glazed window and wall mounted radiator. Fitted with carpet flooring.

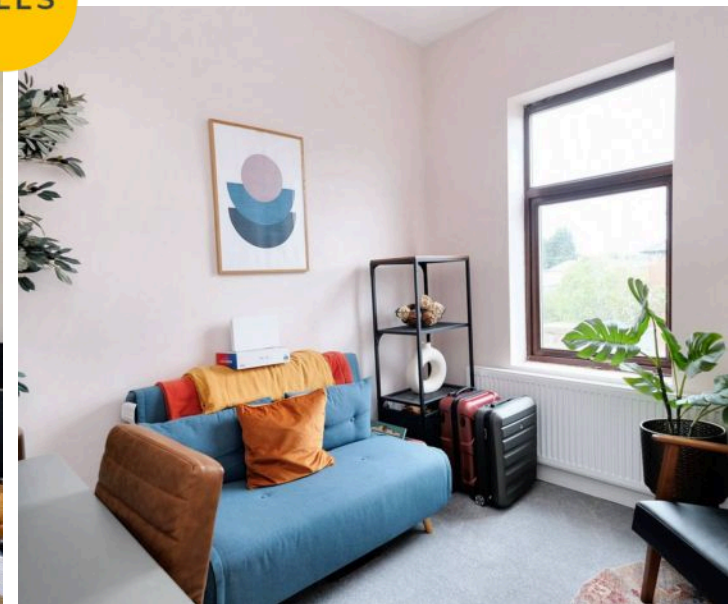
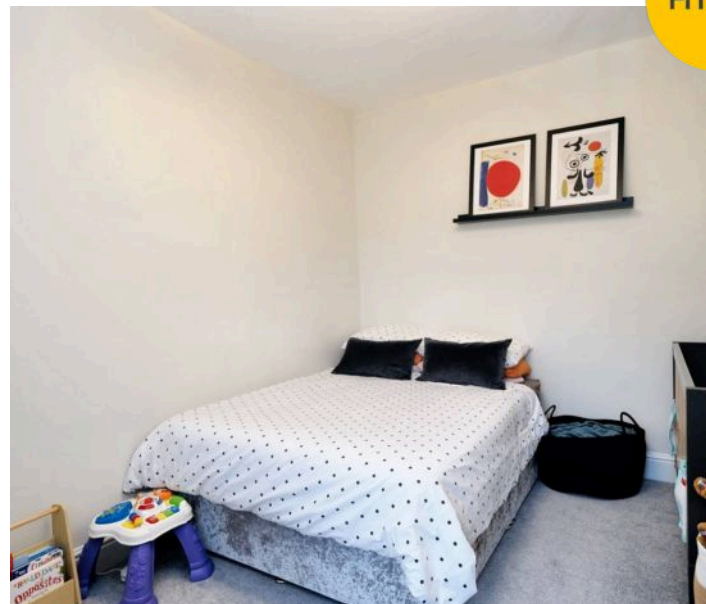
Bathroom

5' 10" x 6' 0" (1.79m x 1.84m)

Featuring a three piece suite including a bath with shower over, hand wash basin and W.C. Complete with a ceiling light point, double glazed window and heated towel rail. Fitted with lino flooring.



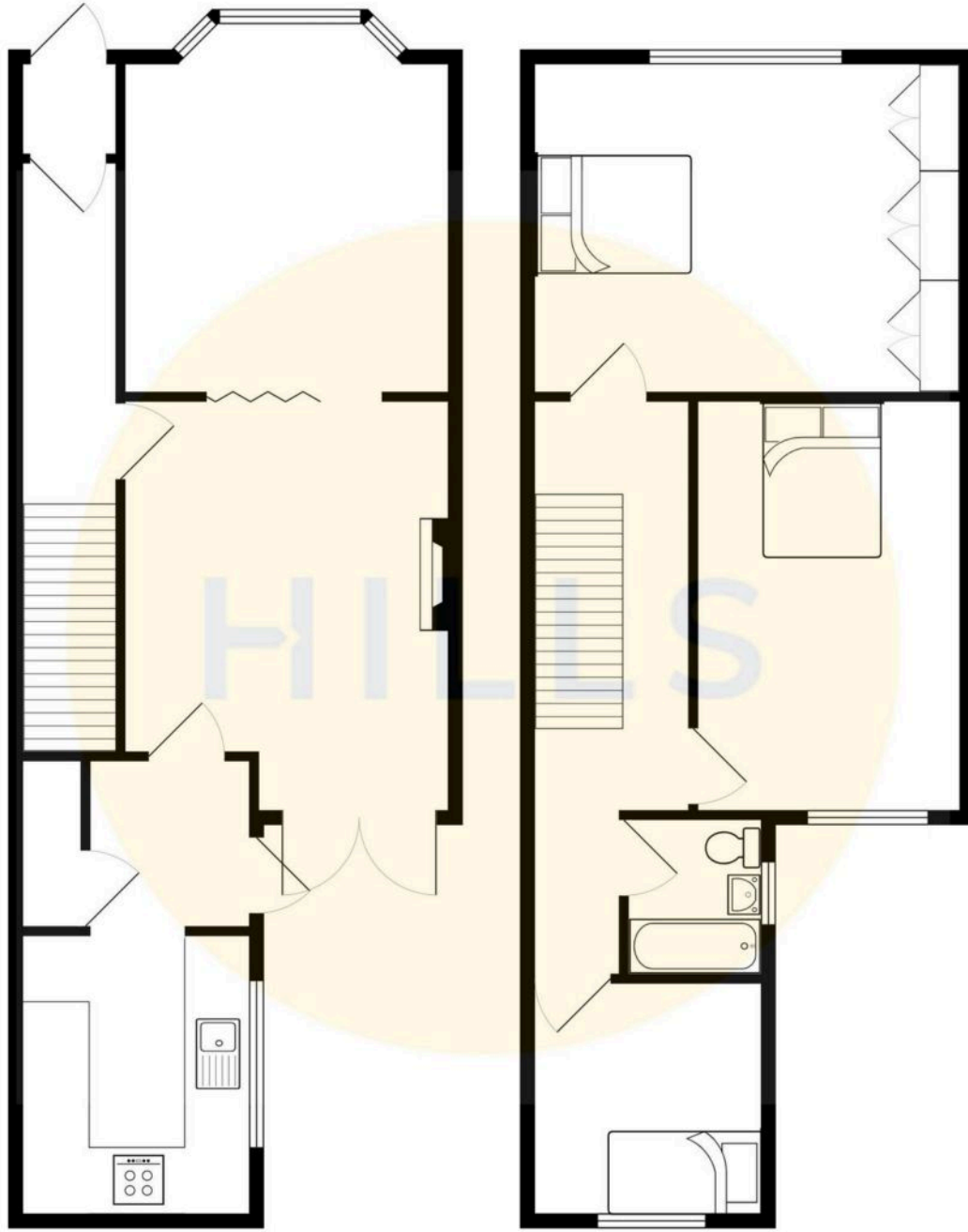
HILLS





HILLS







Hills | Salfords Estate Agent

Hills Residential, Sentinel House Albert Street – M30 0SS

0161 707 4900

sales@hills.agency

www.hills.agency/



THE PROPERTY MISDESCRIPTIONS ACT 1991 The Agent has not tested any apparatus, equipment, fixtures and fittings or services and so cannot verify that they are in working order or fit for the purpose. A Buyer is advised to obtain verification from their Solicitor or Surveyor. References to the Tenure of a Property are based on information supplied by the Seller. The Agent has not had sight of the title documents. A Buyer is advised to obtain verification from their Solicitor. You are advised to check the availability of this property before travelling any distance to view. Every effort and precaution has been made to ensure these particulars are correct and not misleading but their accuracy is not guaranteed nor do they form part of any contract. If there is any point which is of particular importance to you, please contact us and we will provide any information you require. This is advisable, particularly if you intend to travel some distance to view the property. The mention of any appliances and services within these details does not imply that they are in full and efficient working order. These particulars are in draft form awaiting Vendors confirmation of their accuracy. These details must therefore be taken as a guide only.