



Grandstand Avenue, Salford

Salford

HILLS

Offers Over £400,000

Grandstand Avenue

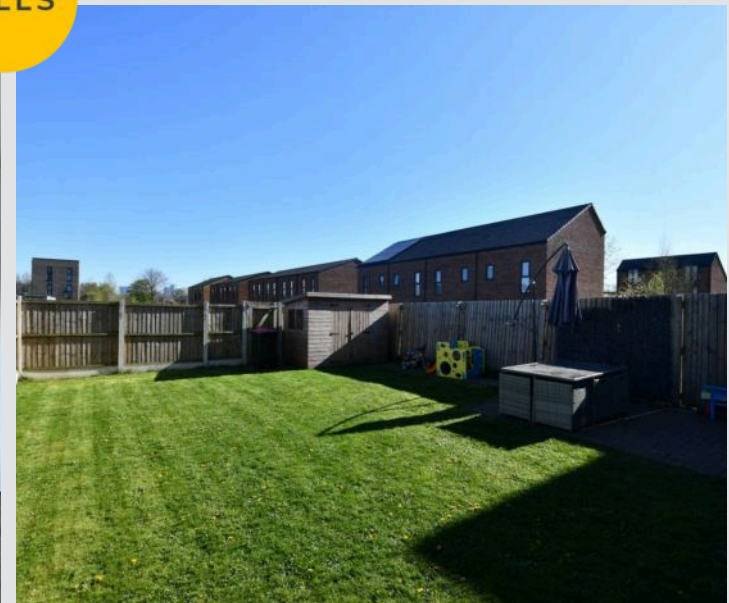
Salford

Popular Castle Irwell Development Prestigious Four Bedroom Detached Property, Featuring a Generous Plot, Ensuites to Two of the Bedrooms and a Private Balcony to the Main Bedroom!

Council Tax band: D

Tenure: Freehold

- Prestigious, Modern Four Bedroom Detached Property
- Located on the Popular Castle Irwell Development
- Family Lounge with a Patio Door to the Front
- Bright and Airy Kitchen Diner with Modern Units and Patio Doors to the Rear
- Four Generously-Sized Bedrooms
- Second Bedroom Benefits from an Ensuite and a Juliette Balcony
- Large Main Bedroom with an Ensuite and Access to a Balcony
- Stylish Three-Piece Family Bathroom and a Downstairs W/C
- Generously-Sized Garden to the Rear
- Driveway for Off-Road Parking



Entrance Hallway

Complete with ceiling spotlights, wall mounted radiator and laminate flooring.

Lounge

12' 10" x 9' 4" (3.92m x 2.84m)

Complete with ceiling spotlights, wall mounted radiator and patio doors. Fitted with laminate flooring.

Kitchen / Diner

16' 8" x 15' 3" (5.07m x 4.65m)

Featuring complementary fitted units with integral hob and oven, fridge freezer and washing machine. Complete with ceiling spotlights, two double glazed windows, wall mounted radiator and patio doors. Fitted with laminate flooring.

W.C.

6' 3" x 2' 10" (1.90m x 0.86m)

Featuring a two piece suite including a hand wash basin and W.C. Complete with ceiling spotlights, double glazed window and heated towel rail. Fitted with laminate flooring.

Landing

Complete with a ceiling light point, wall mounted radiator and carpet flooring.

Bedroom Two

12' 6" x 10' 8" (3.81m x 3.25m)

Complete with a ceiling light point, Juliette balcony and wall mounted radiator. Fitted with carpet flooring.

En suite

7' 6" x 6' 4" (2.29m x 1.92m)

Featuring a three piece suite including a shower, hand wash basin and W.C. Complete with ceiling spotlights, double glazed window and heated towel rail. Fitted with cushioned flooring.



HILLS



Bedroom Three

10' 8" x 7' 6" (3.25m x 2.28m)

Complete with a ceiling light point, double glazed window and wall mounted radiator. Fitted with carpet flooring.

Bedroom Four

8' 10" x 6' 7" (2.68m x 2.00m)

Complete with a ceiling light point, double glazed window and wall mounted radiator. Fitted with carpet flooring.

Bathroom

8' 10" x 6' 6" (2.70m x 1.98m)

Featuring a three piece suite including a bath with shower over, hand wash basin and W.C. Complete with ceiling spotlights, double glazed window and heated towel rail. Fitted with cushioned flooring.

Landing

Complete with a ceiling light point, double glazed window and wall mounted radiator. Fitted with patio door and carpet flooring.

Bedroom One

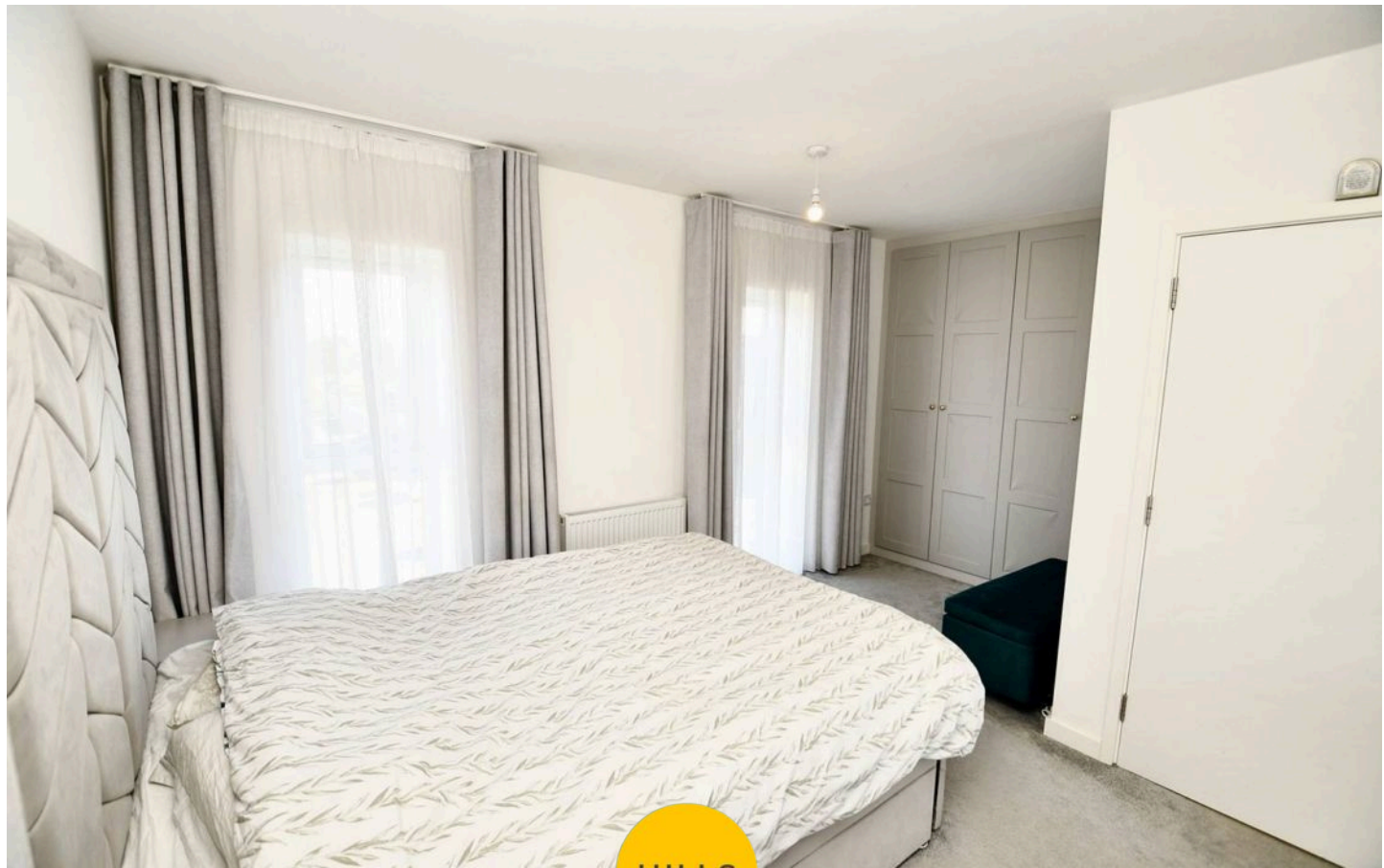
18' 6" x 14' 9" (5.63m x 4.49m)

Complete with a ceiling light point, three double glazed windows and wall mounted radiator. Fitted with carpet flooring. Patio door with access to a private balcony.

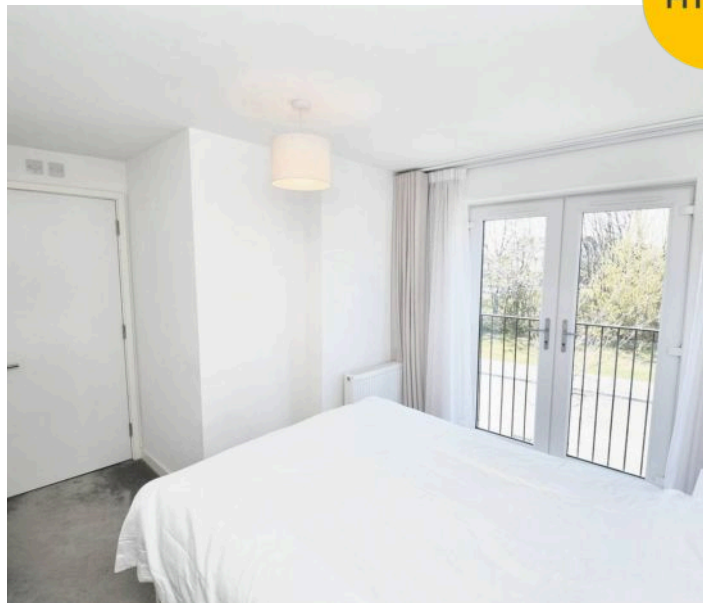
En suite

6' 10" x 3' 11" (2.09m x 1.19m)

Featuring a three piece suite including a shower, hand wash basin and W.C. Complete with ceiling spotlights, heated towel rail and cushioned flooring.



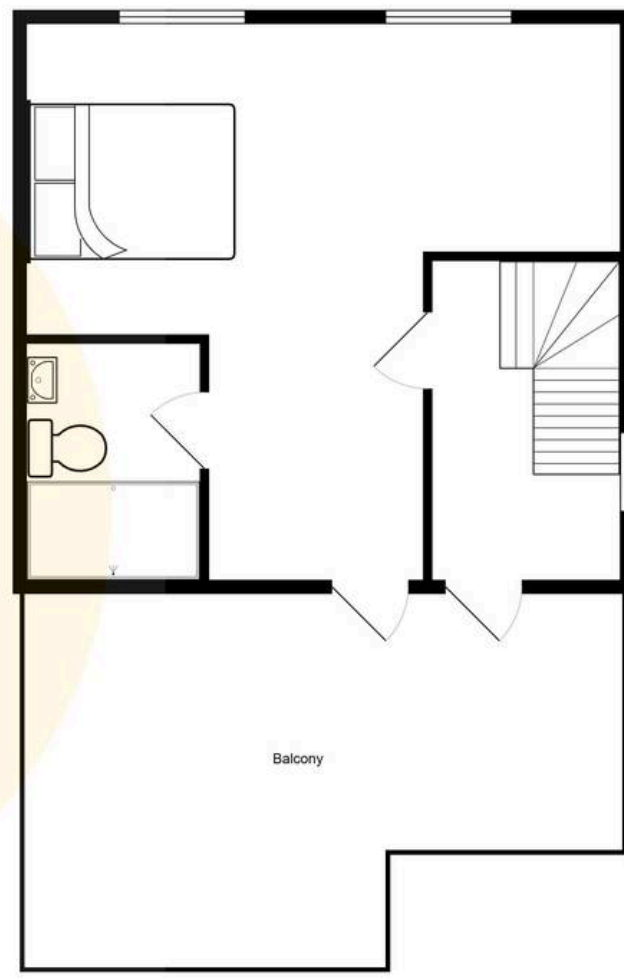
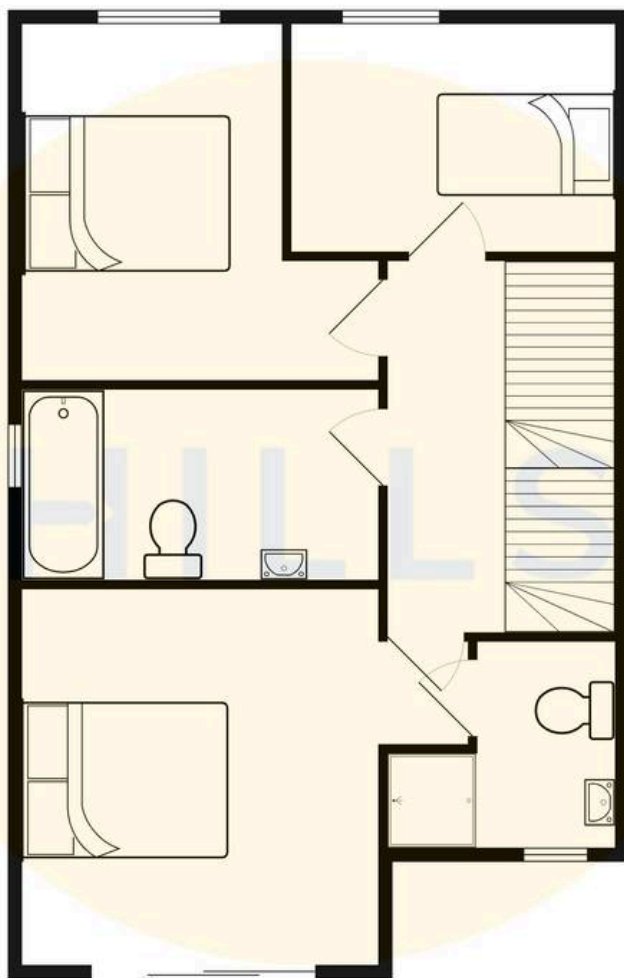
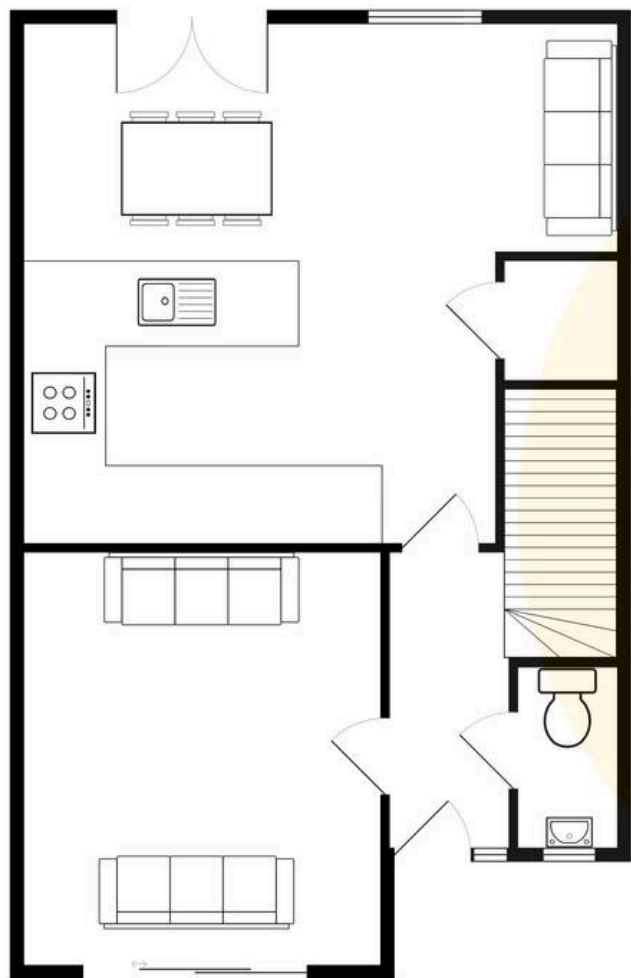
HILLS





HILLS







Hills | Salfords Estate Agent

Hills Residential, Sentinel House Albert Street – M30 0SS

0161 707 4900

sales@hills.agency

www.hills.agency/



THE PROPERTY MISDESCRIPTIONS ACT 1991 The Agent has not tested any apparatus, equipment, fixtures and fittings or services and so cannot verify that they are in working order or fit for the purpose. A Buyer is advised to obtain verification from their Solicitor or Surveyor. References to the Tenure of a Property are based on information supplied by the Seller. The Agent has not had sight of the title documents. A Buyer is advised to obtain verification from their Solicitor. You are advised to check the availability of this property before travelling any distance to view. Every effort and precaution has been made to ensure these particulars are correct and not misleading but their accuracy is not guaranteed nor do they form part of any contract. If there is any point which is of particular importance to you, please contact us and we will provide any information you require. This is advisable, particularly if you intend to travel some distance to view the property. The mention of any appliances and services within these details does not imply that they are in full and efficient working order. These particulars are in draft form awaiting Vendors confirmation of their accuracy. These details must therefore be taken as a guide only.