

Field Street

Salford



In Excess of £220,000

Field Street

Salford

Take a look at this WELL-PRESENTED TWO DOUBLE BEDROOM HOME situated on the popular 'CHIMNEY POT PARK' development and walking distance to SALFORD QUAY...

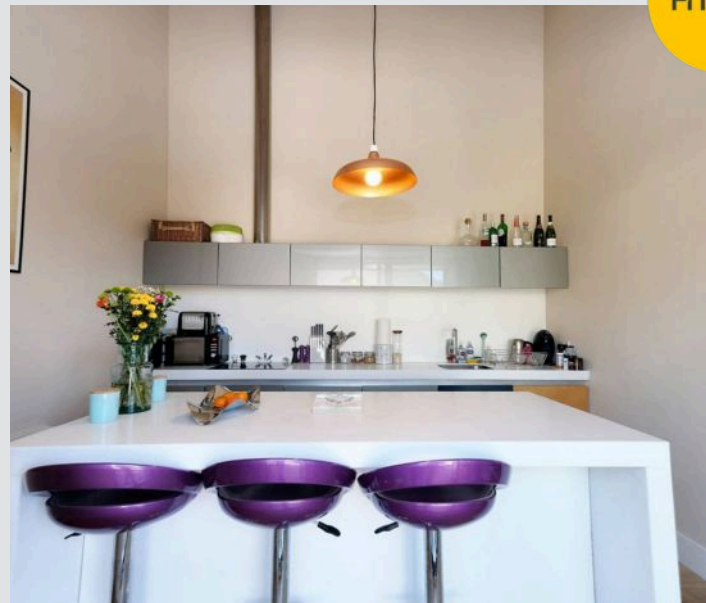
Council Tax band: B

Tenure: Leasehold

- Well presented end terrace property on the popular chimney pot park development
- Two bathrooms (one being 'Jack and Jill' style) and a stunning fitted kitchen complete with centre island
- Sun-drenched garden terrace (bigger than most)
- Perfect for first time buyers and investors alike
- Walking distance to Salford Quays/Media City and Langworthy tram stop
- Secure parking
- Two double bedrooms
- Stunning 21ft lounge complete with a vaulted ceiling
- Early viewing advised



HILLS



Entrance Hallway

3' 9" x 21' 9" (1.14m x 6.64m)

Complete with ceiling spotlights, double glazed window and laminate flooring.

Lounge

21' 0" x 13' 7" (6.41m x 4.15m)

Complete with two double glazed windows, wall mounted radiator and laminate flooring.

Kitchen

12' 5" x 12' 0" (3.78m x 3.67m)

Featuring complementary wall and base units and island with integral hob, cooker and extractor. Integral fridge freezer, dishwasher. Complete with a ceiling light point, patio doors, wall mounted radiator and laminate flooring.

Utility Room

Dimensions: 6' 9" x 4' 9" (2.050m x 1.444m). Ceiling light point, laminate wood effect flooring and space for a washing machine.

Jack and Jill Bathroom

7' 9" x 7' 1" (2.35m x 2.17m)

Featuring a three piece suite including bath with shower over, hand wash basin and W.C. Complete with ceiling spotlights, heated towel rail and lino flooring.

Bedroom One

12' 1" x 10' 11" (3.68m x 3.34m)

Complete with a ceiling light point, light well and wall mounted radiator. Fitted with carpet flooring.

Bedroom Two

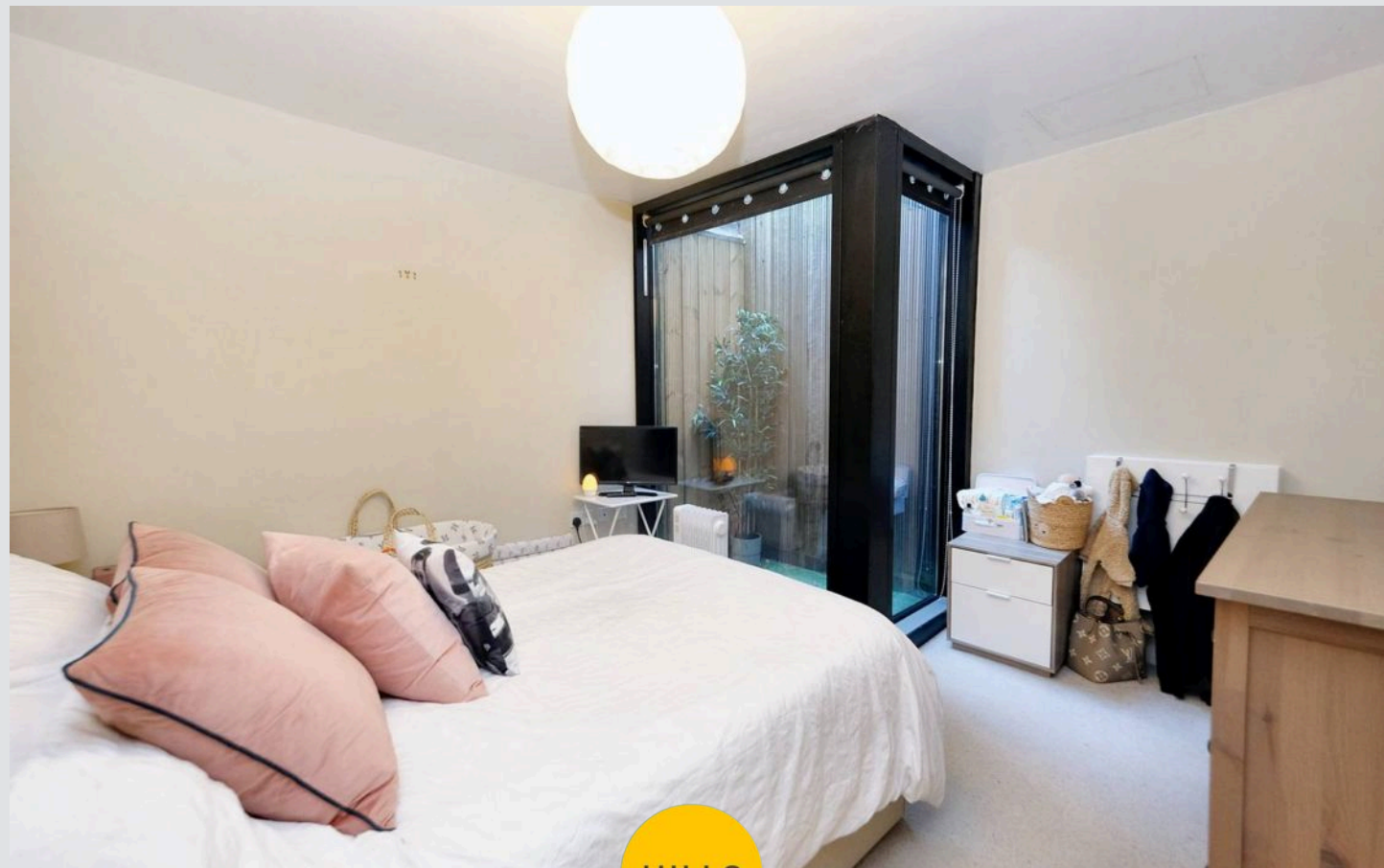
9' 6" x 11' 10" (2.90m x 3.60m)

Complete with a ceiling light point, double glazed window and wall mounted radiator. Fitted with carpet flooring.

Bathroom

5' 8" x 6' 4" (1.73m x 1.94m)

Featuring a three piece suite including a bath with shower over, hand wash basin and W.C. Complete with a ceiling light point, heated towel rail and wooden slat flooring.



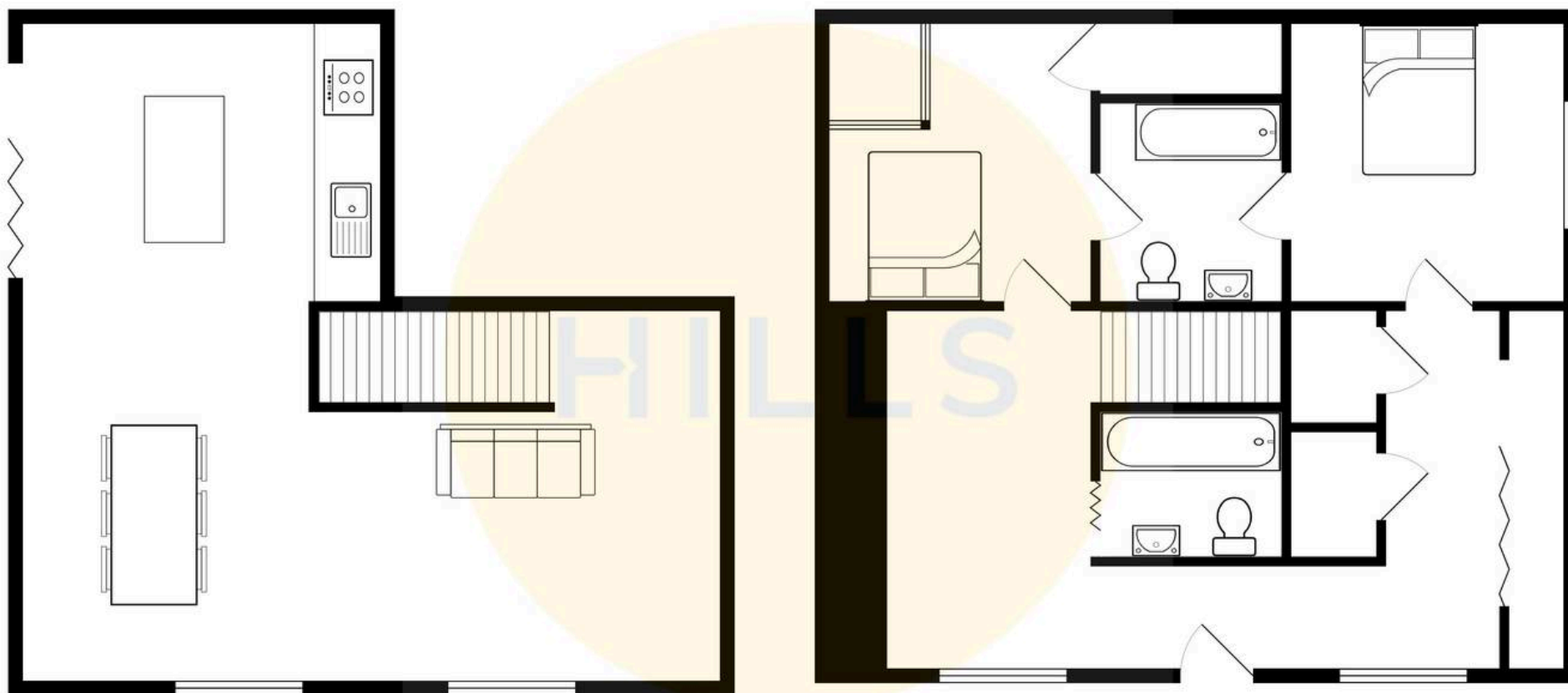
HILLS





HILLS







Hills | Salfords Estate Agent

Hills Residential, Sentinel House Albert Street – M30 0SS

0161 707 4900

sales@hills.agency

www.hills.agency/



THE PROPERTY MISDESCRIPTIONS ACT 1991 The Agent has not tested any apparatus, equipment, fixtures and fittings or services and so cannot verify that they are in working order or fit for the purpose. A Buyer is advised to obtain verification from their Solicitor or Surveyor. References to the Tenure of a Property are based on information supplied by the Seller. The Agent has not had sight of the title documents. A Buyer is advised to obtain verification from their Solicitor. You are advised to check the availability of this property before travelling any distance to view. Every effort and precaution has been made to ensure these particulars are correct and not misleading but their accuracy is not guaranteed nor do they form part of any contract. If there is any point which is of particular importance to you, please contact us and we will provide any information you require. This is advisable, particularly if you intend to travel some distance to view the property. The mention of any appliances and services within these details does not imply that they are in full and efficient working order. These particulars are in draft form awaiting Vendors confirmation of their accuracy. These details must therefore be taken as a guide only.