



Anson Street, Eccles

Manchester



In Excess of £250,000

Anson Street

Eccles, Manchester

Council Tax band: A

Tenure: Freehold

- FANTASTIC THREE BEDROOM HOME
- COMING TO THE MARKET CHAIN FREE
- CONTEMPORARY FITTED KITCHEN COMPLETE WITH ISLAND AND DINING SPACE
- THREE WELL PROPORTIONED BEDROOMS
- WELL PRESENTED THROUGHOUT
- WITHIN WALKING DISTANCE TO MONTON VILLAGE
- MODERN FAMILY BATHROOM
- DRIVEWAY FOR OFF ROAD PARKING
- LARGE LOW MAINTENANCE REAR GARDEN
- EXCELLENT LOCAL AMENITIES INCLUDING SHOPS, PARKS AND SCHOOLS



HILLS



Entrance Hallway

Complete with a ceiling light point, wall mounted radiator and lino flooring.

Lounge

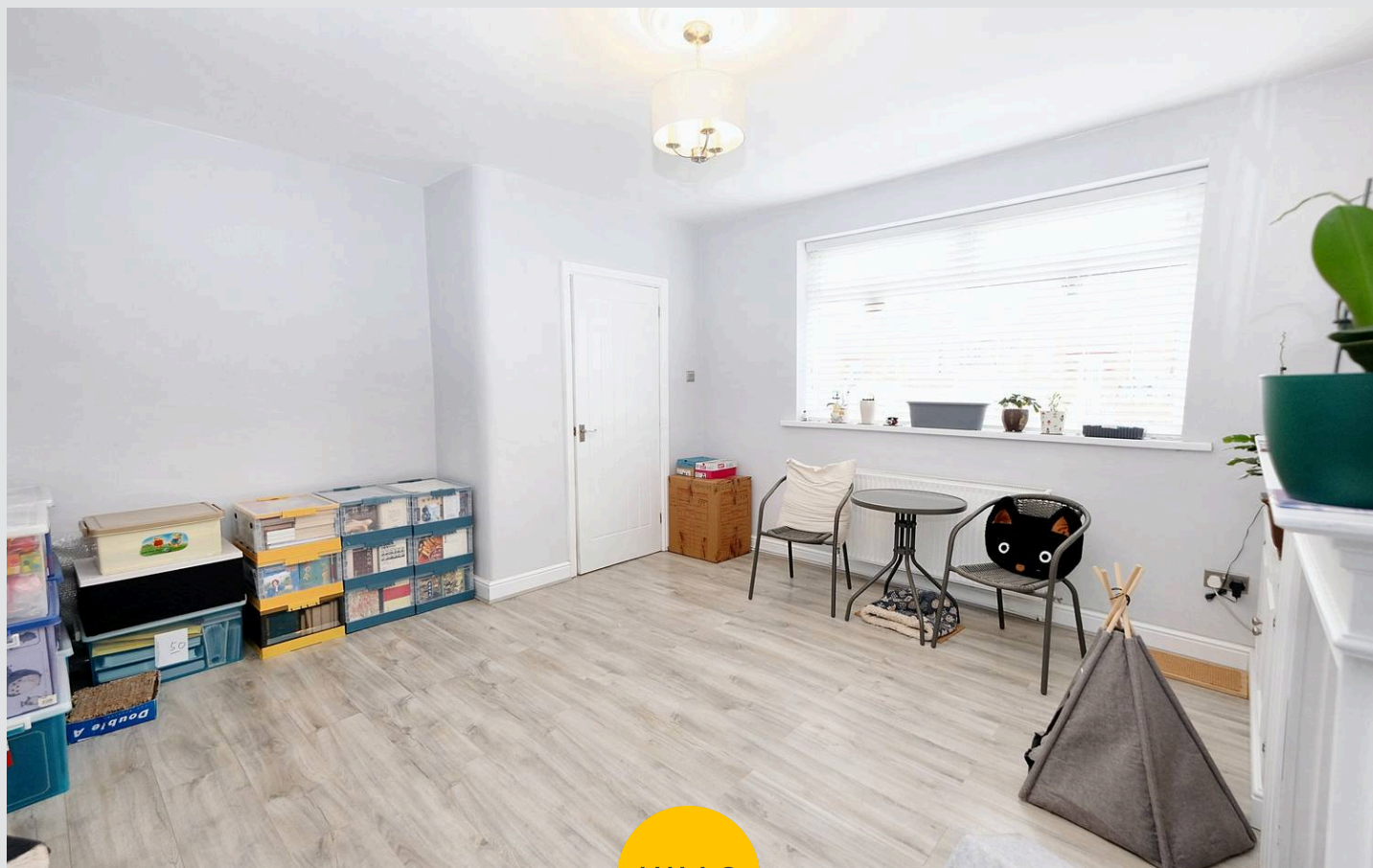
13' 7" x 15' 4" (4.15m x 4.67m)

Complete with a ceiling light point, double glazed window and wall mounted radiator. Fitted with laminate flooring.

Kitchen

10' 4" x 18' 6" (3.15m x 5.64m)

Featuring modern wall and base units with island featuring working plug sockets. Integral fridge freezer, dishwasher, washing machine and dryer. Cooker and extractor. Complete with a ceiling light point, double glazed window and uPVC rear door. Fitted with storage cupboard and laminate flooring.



HILLS



Bedroom One

13' 9" x 10' 10" (4.19m x 3.30m)

Complete with a ceiling light point, double glazed window and wall mounted radiator. Fitted with carpet flooring.

Bedroom Two

10' 9" x 9' 10" (3.28m x 2.99m)

Complete with a ceiling light point, double glazed window and wall mounted radiator. Fitted with carpet flooring.

Bedroom Three

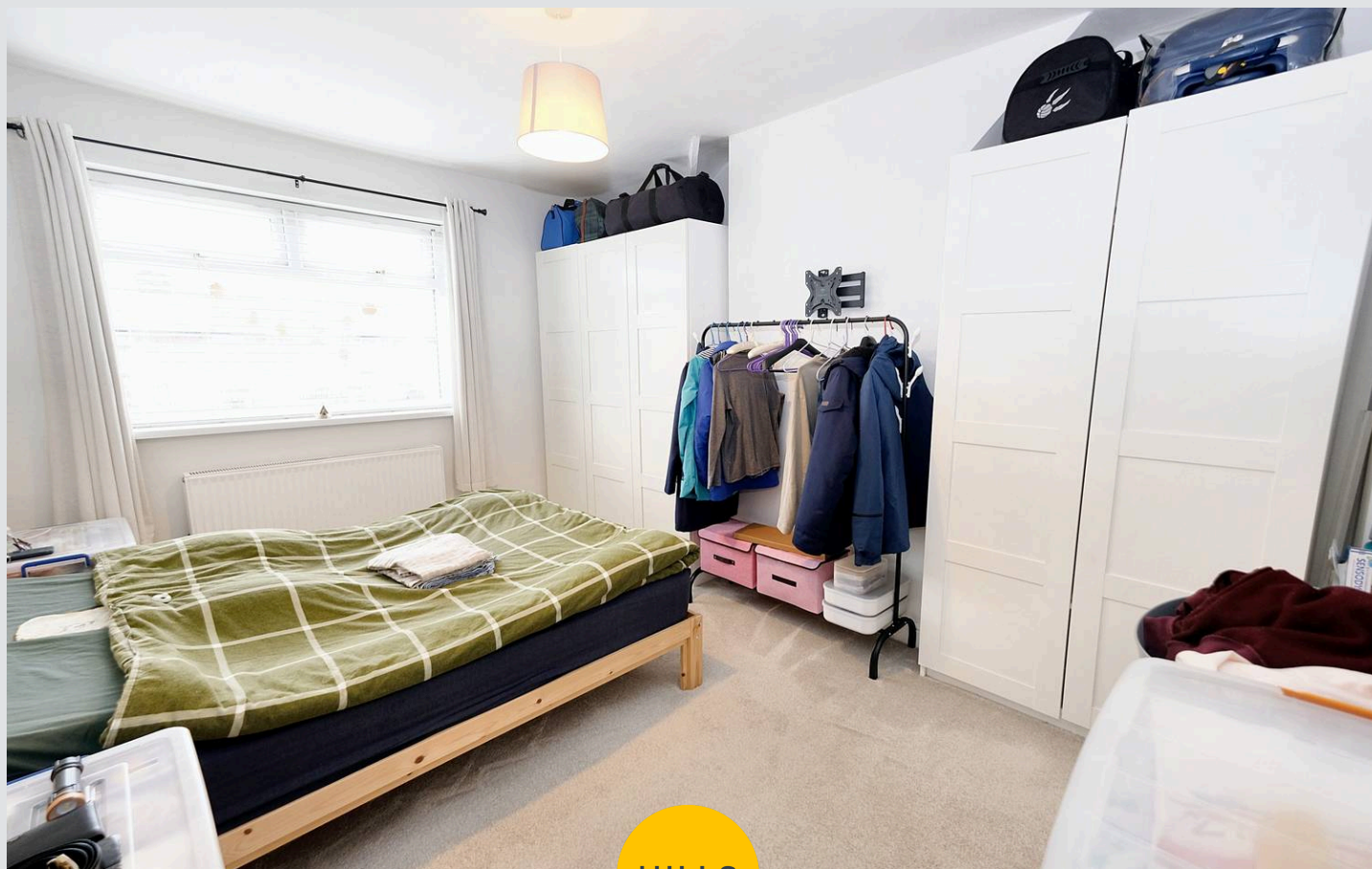
11' 3" x 7' 8" (3.42m x 2.33m)

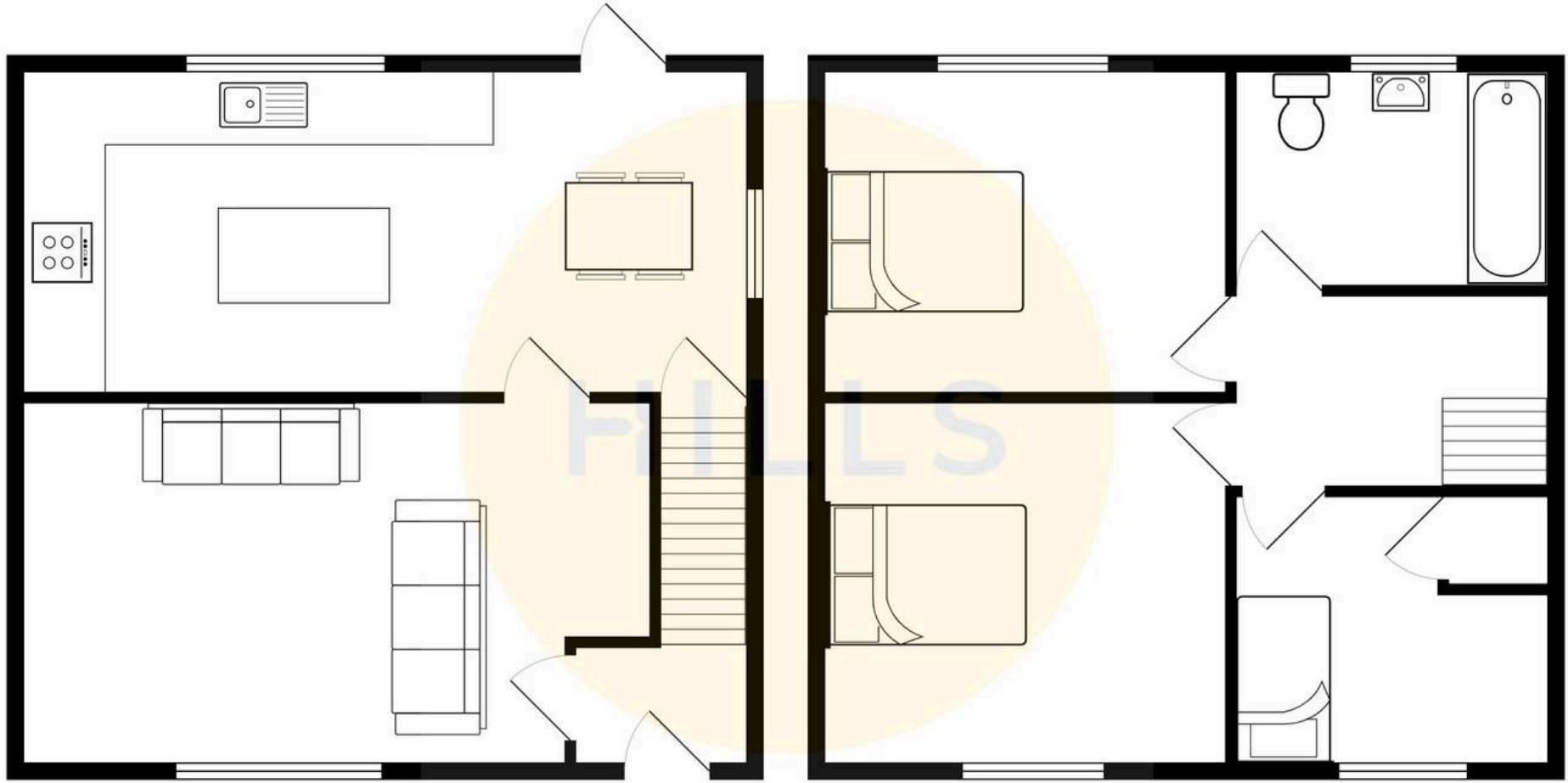
Complete with a ceiling light point, double glazed window and wall mounted radiator. Fitted with laminate flooring.

Bathroom

6' 0" x 6' 0" (1.83m x 1.83m)

Featuring a three piece suite including a bath with shower over, hand wash basin and W.C. Complete with a ceiling light point, double glazed window and heated towel rail. Fitted with lino flooring.







Hills | Salfords Estate Agent

Hills Residential, Sentinel House Albert Street - M30 0SS

0161 707 4900

sales@hills.agency

www.hills.agency/



THE PROPERTY MISDESCRIPTIONS ACT 1991 The Agent has not tested any apparatus, equipment, fixtures and fittings or services and so cannot verify that they are in working order or fit for the purpose. A Buyer is advised to obtain verification from their Solicitor or Surveyor. References to the Tenure of a Property are based on information supplied by the Seller. The Agent has not had sight of the title documents. A Buyer is advised to obtain verification from their Solicitor. You are advised to check the availability of this property before travelling any distance to view. Every effort and precaution has been made to ensure these particulars are correct and not misleading but their accuracy is not guaranteed nor do they form part of any contract. If there is any point which is of particular importance to you, please contact us and we will provide any information you require. This is advisable, particularly if you intend to travel some distance to view the property. The mention of any appliances and services within these details does not imply that they are in full and efficient working order. These particulars are in draft form awaiting Vendors confirmation of their accuracy. These details must therefore be taken as a guide only.