

**Bus Stop**  
Local travel information  
beenetwork.com  
0161 244 1000  
33

**Wellington Road, Eccles**  
Manchester



Offers in Region of **£495,000**



# Wellington Road

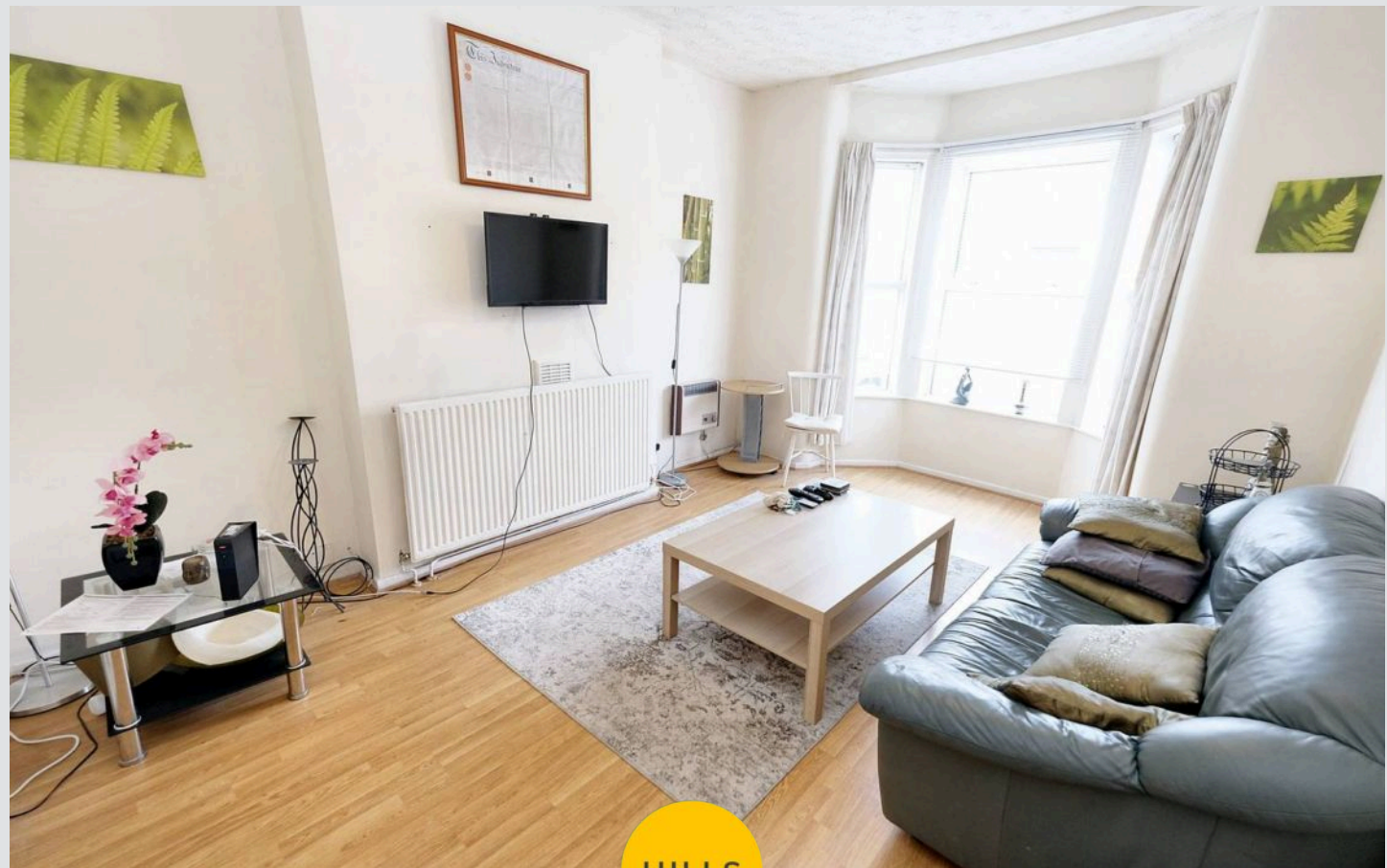
Eccles, Manchester

Impressive four story HMO near Monton Village & Eccles Centre, with seven double bedrooms offering the potential to generating over £3,600 a month. Communal lounge, kitchen, garden, and parking offer convenience. Ideal investment with great access to amenities and transport links.

Council Tax band: E

Tenure: Freehold

- Fully Licensed HMO Located just a Short Walk from Monton Village & Eccles Centre
- Laid over Four Floors Complete with Cellars used as Storage
- Communal Lounge, Kitchen & Utility Space
- Seven Double Bedrooms Laid over Three Floors
- Three Piece Bathroom Suite, Shower Room & Guest W.C.
- Potential to Generate over £3,600 each Month
- Well Served by Excellent Public Transport & Motorway Links
- Surrounded by Excellent Amenities all within Walking Distance
- Potential for Off Road Parking & Sizable Well Maintained Garden to the Rear



HILLS





**Entrance Hallway**

Entered via a hardwood front door. Complete with two ceiling light points and carpet flooring.

**Lounge**

16' 5" x 11' 3" (5.00m x 3.43m)

Complete with a ceiling light point, double glazed bay window, wall mounted radiator and electric radiator. Fitted with laminate flooring.

**Kitchen / Diner**

11' 5" x 9' 2" (3.48m x 2.79m)

Featuring complementary wall and base units with integral stainless steel sink and gas hob. Complete with a ceiling light point, double glazed window and wall mounted radiator. Fitted with lino flooring.

**Utility Room**

5' 9" x 3' 8" (1.75m x 1.12m)

Complete with a ceiling light point, plumbing for washing machine and lino flooring.

**Downstairs W.C.**

5' 1" x 3' 8" (1.55m x 1.12m)

Featuring a two piece suite including hand wash basin and W.C. Complete with a ceiling light point, tiled splashback and lino flooring.

**Bedroom One**

14' 1" x 10' 0" (4.29m x 3.05m)

Complete with a ceiling light point, double glazed window and wall mounted radiator. Fitted with carpet flooring.





**Bedroom Two**

13' 2" x 12' 6" (4.01m x 3.81m)

Complete with a ceiling light point, double glazed window and wall mounted radiator. Fitted with carpet flooring.

**Bedroom Three**

14' 2" x 10' 2" (4.32m x 3.10m)

Complete with a ceiling light point, double glazed window and wall mounted radiator. Fitted with carpet flooring.

**Bedroom Four**

15' 8" x 14' 1" (4.78m x 4.29m)

Complete with a ceiling light point, double glazed window and wall mounted radiator. Fitted with carpet flooring.

**Bathroom**

8' 3" x 7' 8" (2.51m x 2.34m)

Featuring a three piece suite including a bath, hand wash basin and W.C. Complete with a double glazed window, wall mounted radiator, part tiled walls and lino flooring.

**Landing**

Complete with a ceiling light point and carpet flooring.

**Bedroom Five**

Complete with a ceiling light point, two double glazed windows and wall mounted radiator. Fitted with carpet flooring.

**Bedroom Six**

14' 2" x 9' 7" (4.32m x 2.92m)

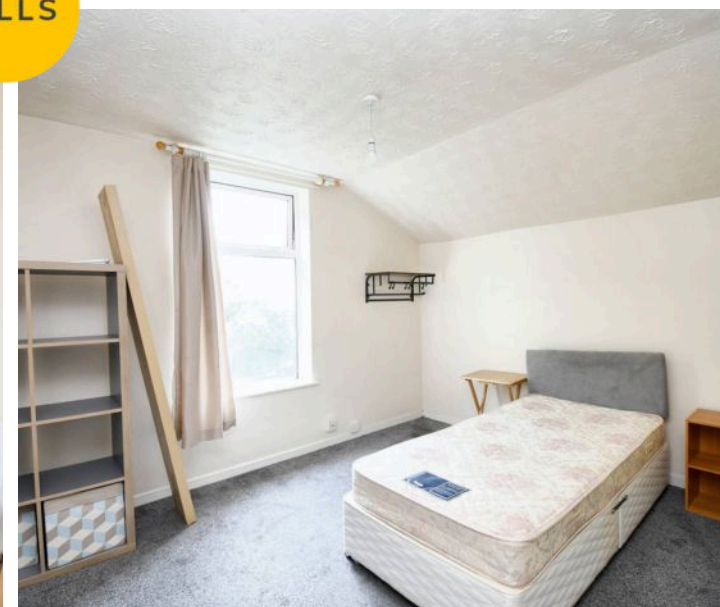
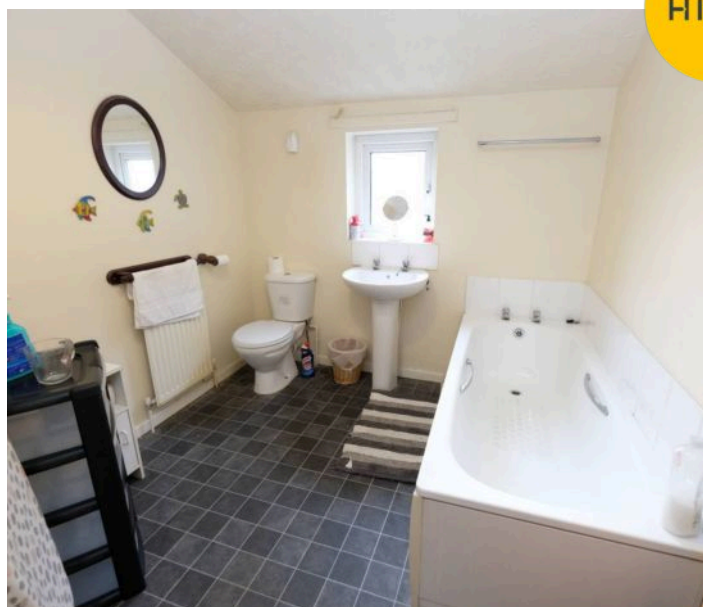
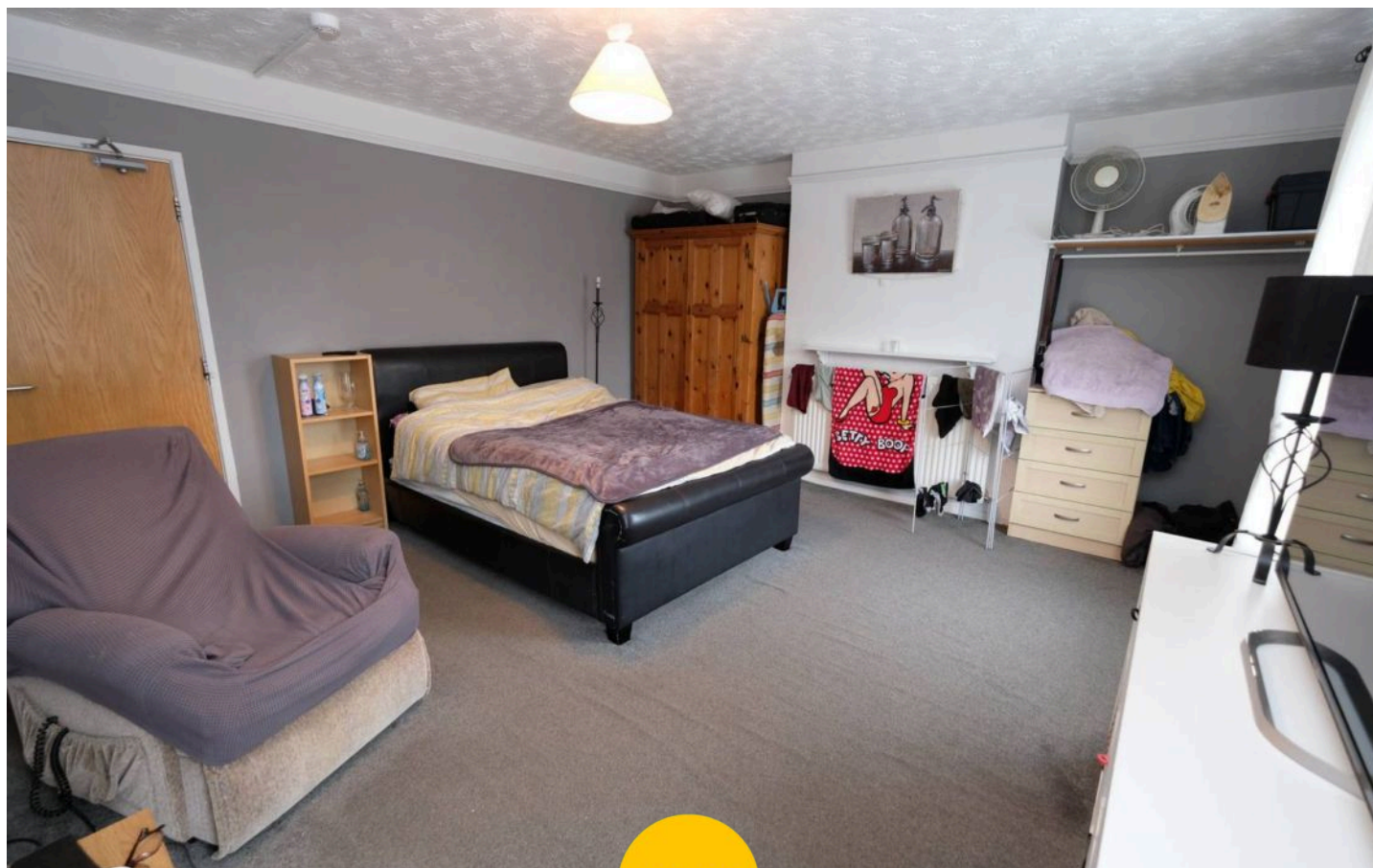
Complete with a ceiling light point, double glazed window and wall mounted radiator. Fitted with carpet flooring.

**Shower Room**

Featuring a three piece suite including a shower cubicle, hand wash basin and W.C. Complete with a ceiling light point, wall mounted radiator, tiled splashback, part tiled walls and lino flooring.

**External**

To the front of the property is potential for off road parking. To the rear of the property is a garden featuring a lawn with paved path and border of foliage.







HILLS









## Hills | Salfords Estate Agent

Hills Residential, Sentinel House Albert Street – M30 0SS

0161 707 4900

[sales@hills.agency](mailto:sales@hills.agency)

[www.hills.agency/](http://www.hills.agency/)



THE PROPERTY MISDESCRIPTIONS ACT 1991 The Agent has not tested any apparatus, equipment, fixtures and fittings or services and so cannot verify that they are in working order or fit for the purpose. A Buyer is advised to obtain verification from their Solicitor or Surveyor. References to the Tenure of a Property are based on information supplied by the Seller. The Agent has not had sight of the title documents. A Buyer is advised to obtain verification from their Solicitor. You are advised to check the availability of this property before travelling any distance to view. Every effort and precaution has been made to ensure these particulars are correct and not misleading but their accuracy is not guaranteed nor do they form part of any contract. If there is any point which is of particular importance to you, please contact us and we will provide any information you require. This is advisable, particularly if you intend to travel some distance to view the property. The mention of any appliances and services within these details does not imply that they are in full and efficient working order. These particulars are in draft form awaiting Vendors confirmation of their accuracy. These details must therefore be taken as a guide only.