

Holt Street, Eccles

Manchester



£210,000

Holt Street

Eccles, Manchester

Renovated terrace property with extension to the rear, two reception rooms, modern kitchen, two double bedrooms, white bathroom suite. Low maintenance gardens, garage, local amenities, excellent transport links. Ideal for cosy living.

Council Tax band: A

Tenure: Leasehold

- Recently Renovated & Beautifully Presented, Extended Terrace Property
- The Perfect First Home Ready to Move Straight In To
- Two Reception Rooms
- Stunning Contemporary Fitted Kitchen
- Two Generous Double Bedrooms
- Three Piece Timeless White Bathroom Suite
- Low Maintenance Gardens to the Front and Rear
- Garage Providing Useful Storage Space
- Perfectly Positioned Surrounded by Local Amenities & Excellent Transport Links



Entrance Hallway

Complete with a ceiling light point, wall mounted radiator and laminate flooring.

Lounge

11' 11" x 10' 3" (3.63m x 3.12m)

Complete with a ceiling light point, double glazed window and wall mounted radiator. Fitted with laminate flooring.

Dining Room

12' 10" x 11' 2" (3.92m x 3.41m)

Complete with a ceiling light point, wall mounted radiator and patio doors. Fitted with laminate flooring.

Kitchen

8' 10" x 8' 0" (2.69m x 2.45m)

Featuring a modern range of fitted units with integral hob and oven. Space for a washing machine. Complete with ceiling spotlights, double glazed window and tiled flooring.

Landing

Complete with a ceiling light point and carpet flooring.

Bedroom One

14' 2" x 15' 2" (4.33m x 4.63m)

Complete with a ceiling light point, double glazed window and wall mounted radiator. Fitted with laminate flooring.

Bedroom Two

13' 0" x 8' 10" (3.95m x 2.69m)

Complete with a ceiling light point, double glazed window and wall mounted radiator. Fitted with laminate flooring.



Bathroom

8' 10" x 8' 10" (2.68m x 2.69m)

Featuring a contemporary three-piece suite including a bath with shower over, hand wash basin and W.C.

Complete with ceiling spotlights, double glazed window and heated towel rail. Fitted with partially tiled walls and tiled flooring.

Outside W.C.

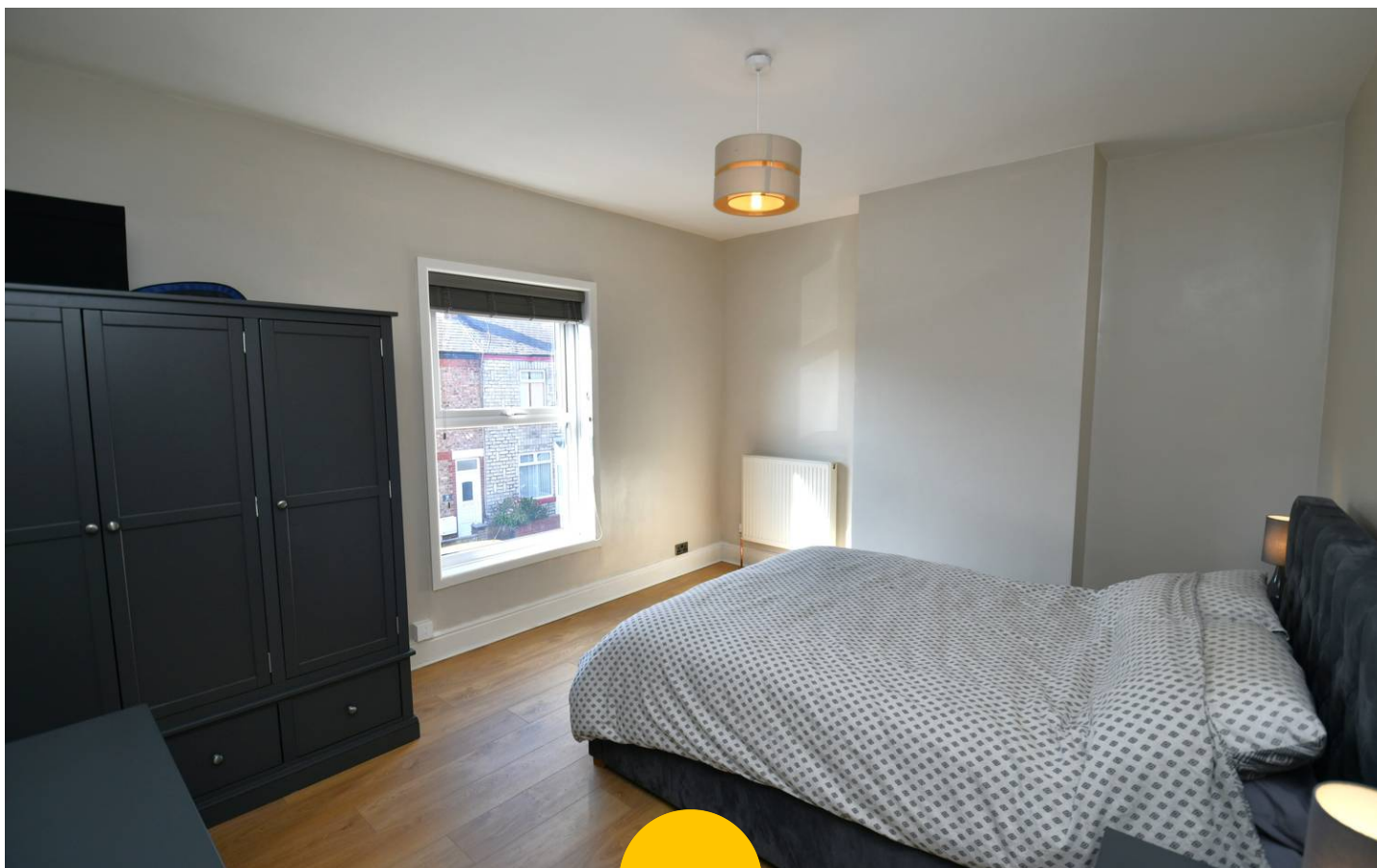
4' 9" x 3' 2" (1.44m x 0.97m)

Outbuilding

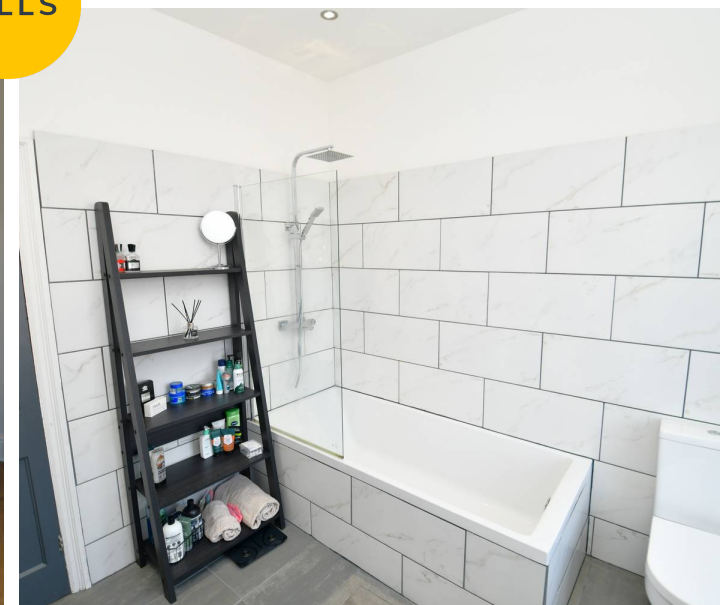
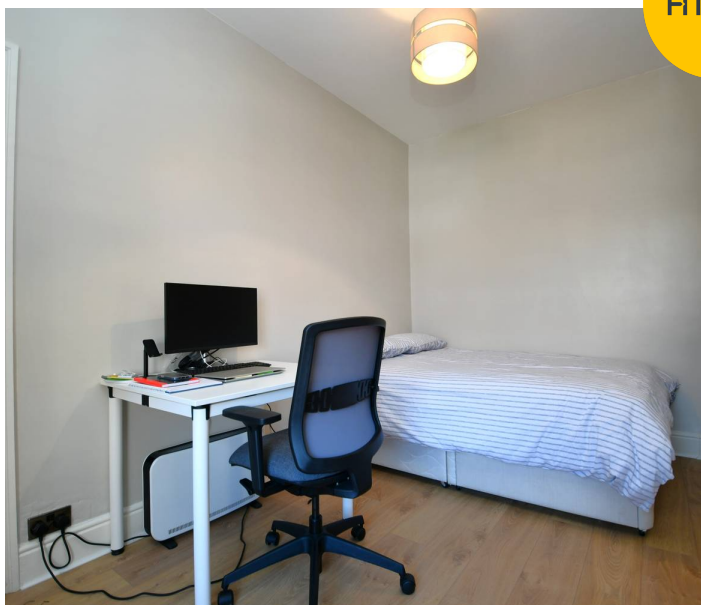
5' 2" x 4' 6" (1.57m x 1.38m)

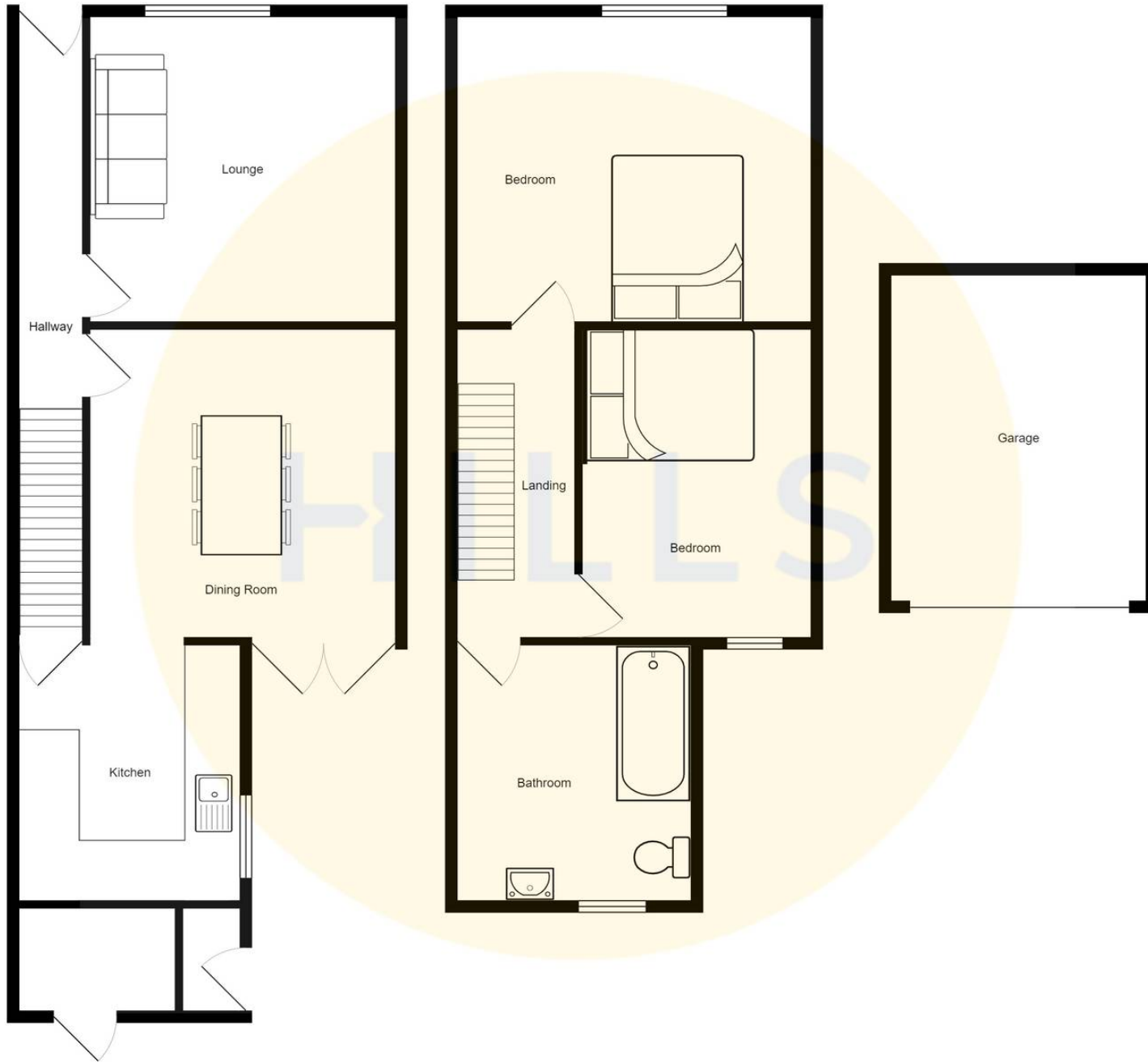
External

To the rear of the property is a paved garden recently done around a year ago.



HILLS







Hills | Salfords Estate Agent

Hills Residential, Sentinel House Albert Street – M30 0SS

0161 707 4900

sales@hills.agency

www.hills.agency/



THE PROPERTY MISDESCRIPTIONS ACT 1991 The Agent has not tested any apparatus, equipment, fixtures and fittings or services and so cannot verify that they are in working order or fit for the purpose. A Buyer is advised to obtain verification from their Solicitor or Surveyor. References to the Tenure of a Property are based on information supplied by the Seller. The Agent has not had sight of the title documents. A Buyer is advised to obtain verification from their Solicitor. You are advised to check the availability of this property before travelling any distance to view. Every effort and precaution has been made to ensure these particulars are correct and not misleading but their accuracy is not guaranteed nor do they form part of any contract. If there is any point which is of particular importance to you, please contact us and we will provide any information you require. This is advisable, particularly if you intend to travel some distance to view the property. The mention of any appliances and services within these details does not imply that they are in full and efficient working order. These particulars are in draft form awaiting Vendors confirmation of their accuracy. These details must therefore be taken as a guide only.