

New Barton Street

Salford



£180,000

# New Barton Street

Salford

**\*\*NO VENDOR CHAIN - POPULAR IRLAM O' TH' HEIGHT LOCATION\*\*** Take a look at this **SPACIOUS THREE BEDROOM** property! With a large, open plan lounge diner and a generously-sized kitchen!  
Council Tax band: A

Tenure: Freehold

- Available with **NO VENDOR CHAIN**
- Spacious Three Bedroom Terraced Property
- Located in the Popular Irlam o' th' Height
- Large, Open Plan Lounge Diner
- Fitted Kitchen and a Three-Piece Bathroom
- Three Well-Proportioned Bedrooms with Lovely High Ceilings
- Low-Maintenance Courtyard Garden to the Rear
- Ideal First Time Home or Investment - Ideal for Someone Looking to Put Their Own Stamp on a Property
- Viewing is Highly Recommended to Appreciate the Size and Potential!



HILLS



### Entrance Hallway

Complete with a ceiling light point and laminate flooring.

### Lounge / Diner

25' 8" x 14' 2" (7.83m x 4.33m)

Complete with two ceiling light points, double glazed window and two wall mounted radiators. Fitted with patio doors.

### Kitchen

13' 3" x 8' 5" (4.03m x 2.56m)

Featuring complementary fitted units with space for a washer and dryer. Complete with a ceiling light point, two double glazed windows and cushioned flooring.

### Landing

Complete with a ceiling light point and carpet flooring.

### Bedroom One

14' 2" x 13' 0" (4.32m x 3.97m)

Complete with a ceiling light point, double glazed window and wall mounted radiator. Fitted with carpet flooring.

### Bedroom Two

12' 3" x 7' 11" (3.74m x 2.41m)

Complete with a ceiling light point, double glazed window and wall mounted radiator. Fitted with carpet flooring.

### Bedroom Three

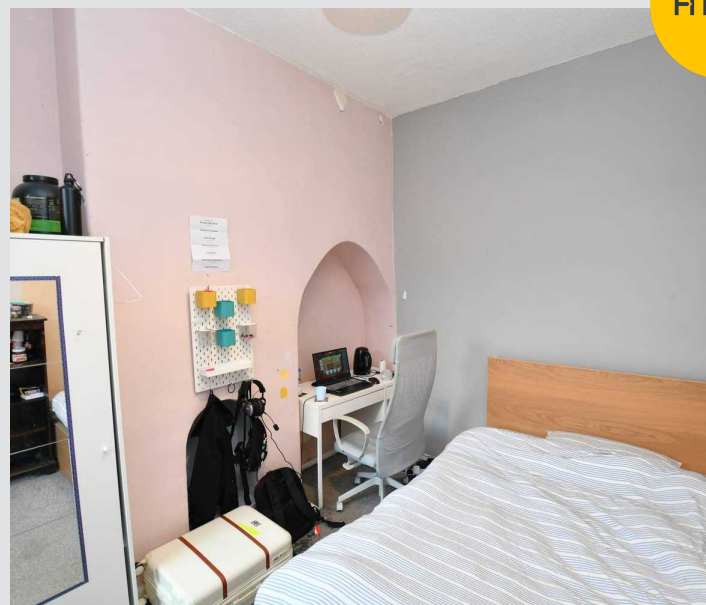
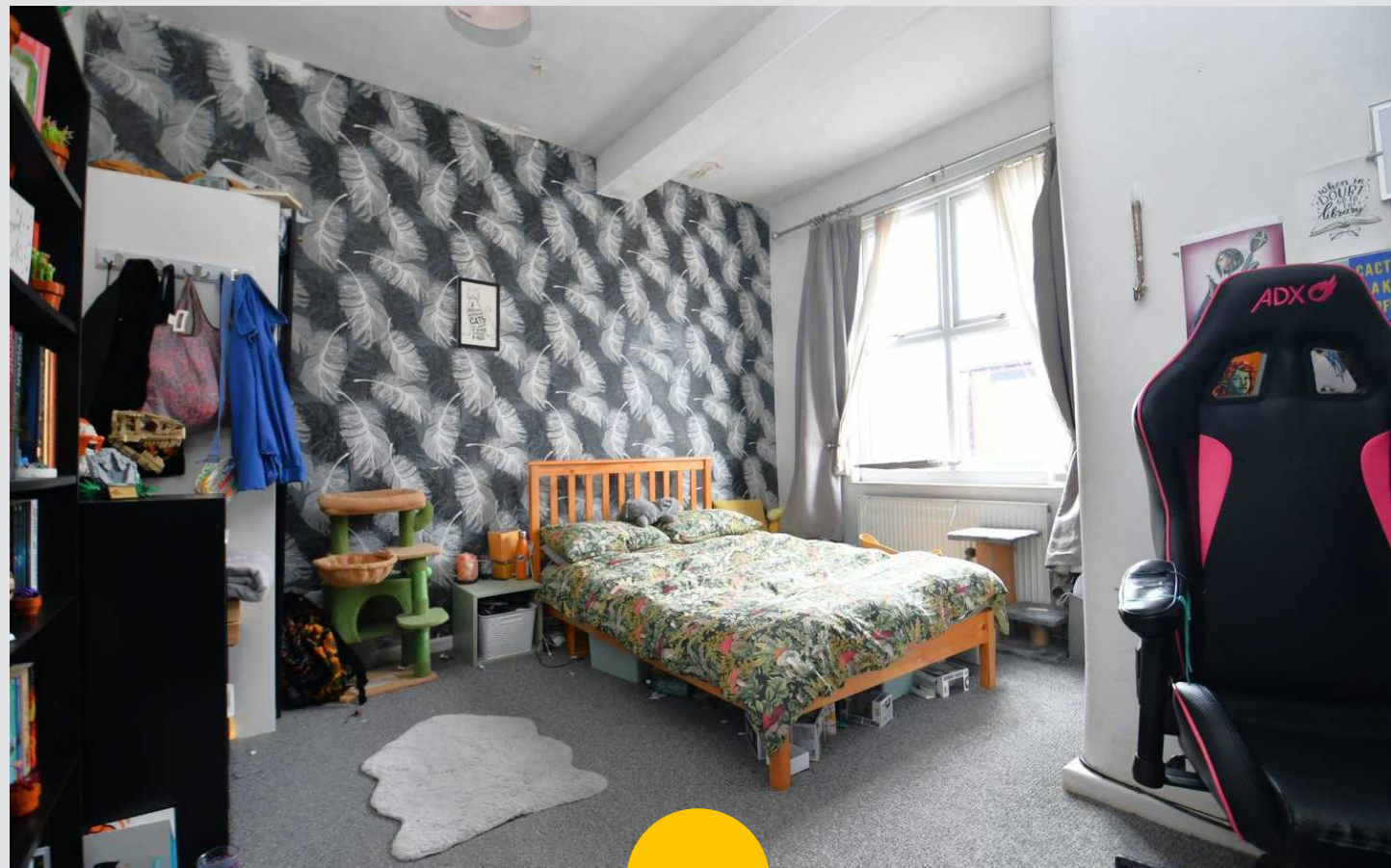
8' 4" x 8' 4" (2.55m x 2.53m)

Complete with a ceiling light point, double glazed window and wall mounted radiator. Fitted with carpet flooring.

### Bathroom

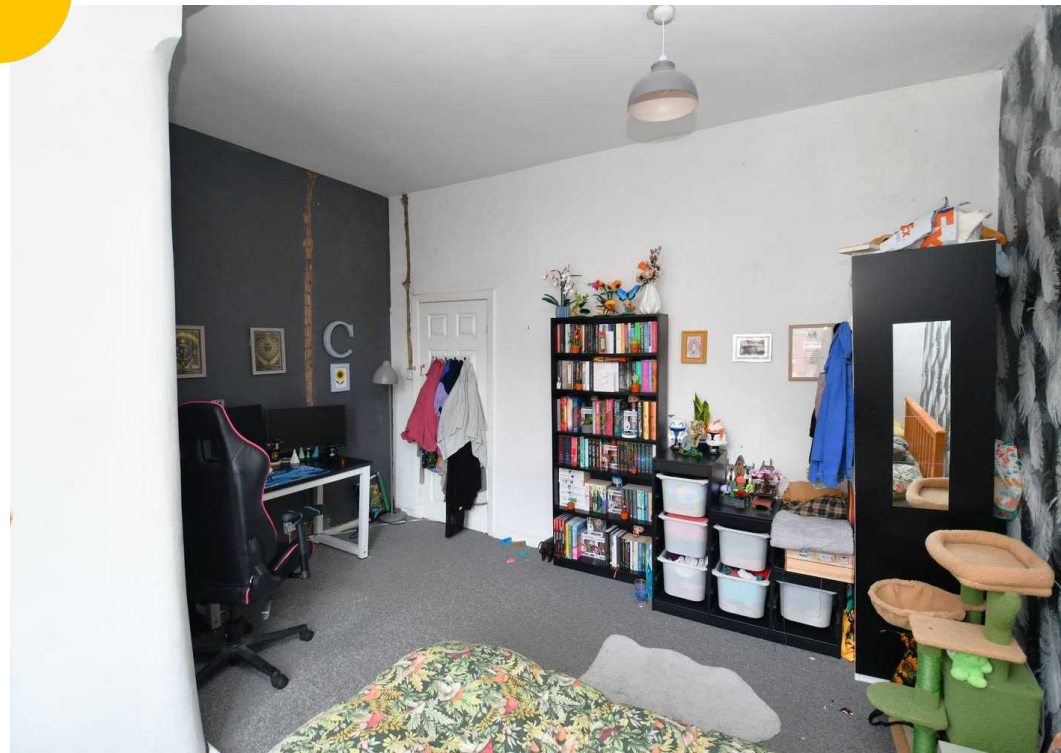
6' 0" x 5' 6" (1.82m x 1.68m)

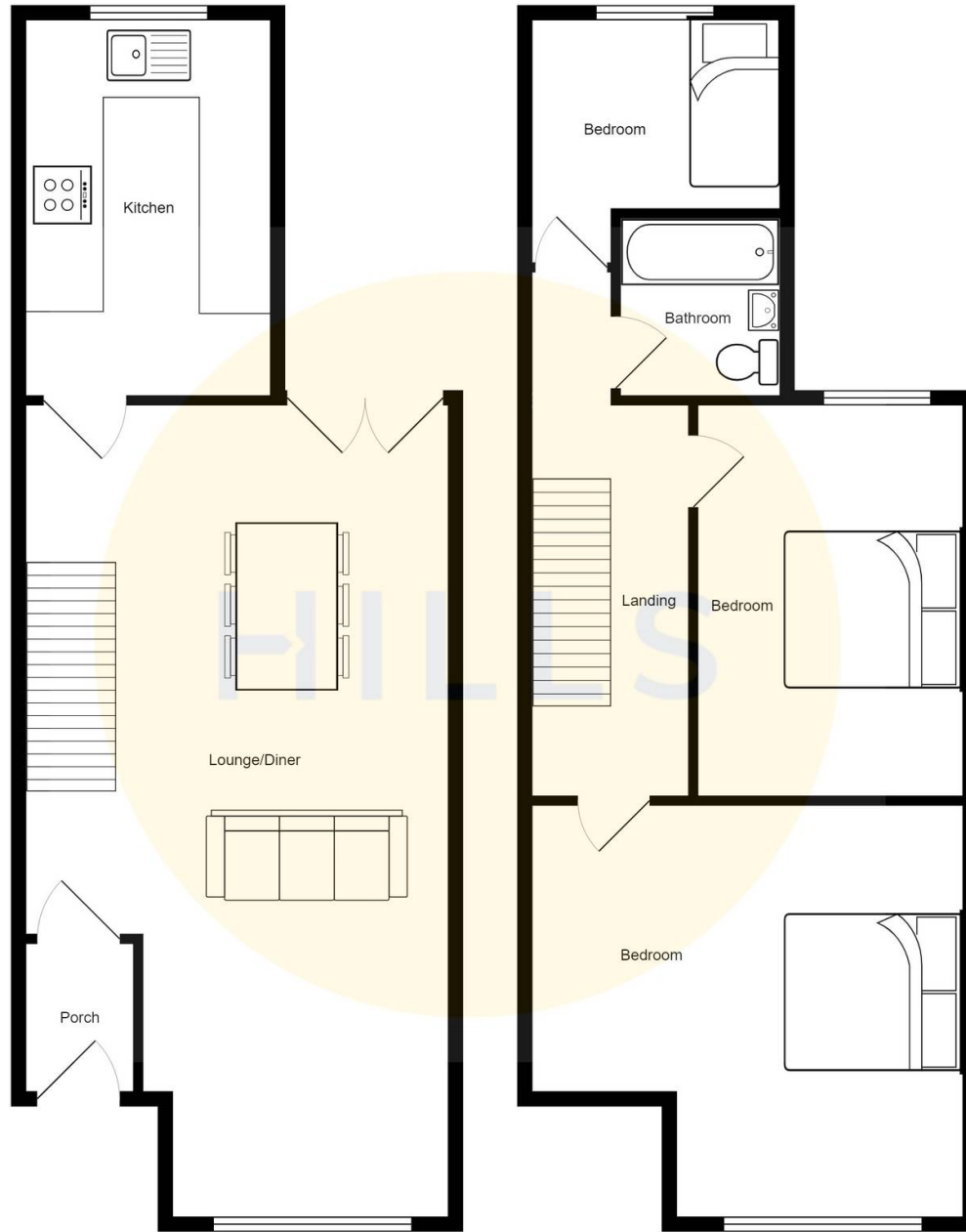
Featuring a three-piece suite including a bath with shower over, hand wash basin and W.C. Complete with ceiling spotlights, double glazed window, part tiled walls and tiled flooring.





HILLS







## Hills | Salfords Estate Agent

Hills Residential, Sentinel House Albert Street - M30 0SS

0161 707 4900

[sales@hills.agency](mailto:sales@hills.agency)

[www.hills.agency/](http://www.hills.agency/)



THE PROPERTY MISDESCRIPTIONS ACT 1991 The Agent has not tested any apparatus, equipment, fixtures and fittings or services and so cannot verify that they are in working order or fit for the purpose. A Buyer is advised to obtain verification from their Solicitor or Surveyor. References to the Tenure of a Property are based on information supplied by the Seller. The Agent has not had sight of the title documents. A Buyer is advised to obtain verification from their Solicitor. You are advised to check the availability of this property before travelling any distance to view. Every effort and precaution has been made to ensure these particulars are correct and not misleading but their accuracy is not guaranteed nor do they form part of any contract. If there is any point which is of particular importance to you, please contact us and we will provide any information you require. This is advisable, particularly if you intend to travel some distance to view the property. The mention of any appliances and services within these details does not imply that they are in full and efficient working order. These particulars are in draft form awaiting Vendors confirmation of their accuracy. These details must therefore be taken as a guide only.