



Chatsworth Road, Eccles

Manchester



In Excess of £600,000

Chatsworth Road

Eccles, Manchester

Fabulous four bed detached home in sought-after Ellesmere Park area. Two reception rooms, Two kitchens, spacious bedrooms, garage, off-road parking. Potential for modernisation and development. No chain, rare opportunity with immense potential. Viewing recommended! Council Tax band: F

Tenure: Freehold

- Fabulous Four Bedroom Detached Home Located in the Desirable Ellesmere Park
- Offered to the Market with No Onward Chain
- Two Reception Rooms
- Two Fitted Kitchens
- Four Generously Sized Bedrooms
- Family Bathroom & Separate W.C.
- Off Road Parking for Multiple Cars & Garage
- Beautifully Kept Front & Rear Gardens
- In Need of Modernisation, Offers Further Development Potential



Entrance Hallway

A welcoming entrance hallway entered via a hardwood front door. Complete with two wall light points, single glazed window and wall mounted radiator. Understairs storage. Fitted with carpet flooring.

Reception Room One

14' 9" x 12' 0" (4.50m x 3.66m)

Featuring an open fire. Complete with a ceiling light point, double glazed bay window and wall mounted radiator. Fitted with carpet flooring.

Reception Room Two

19' 7" x 13' 9" (5.97m x 4.19m)

Featuring two wall light points, double glazed bay window, two double glazed and two single glazed windows. Wall mounted radiator and uPVC door. Fitted with carpet flooring.

Kitchen One

11' 1" x 10' 3" (3.38m x 3.12m)

Featuring complementary wall and base units with space for a fridge freezer and cooker. Complete with a ceiling light point, double glazed window and wall mounted radiator. Fitted with tiled flooring.

Kitchen Two

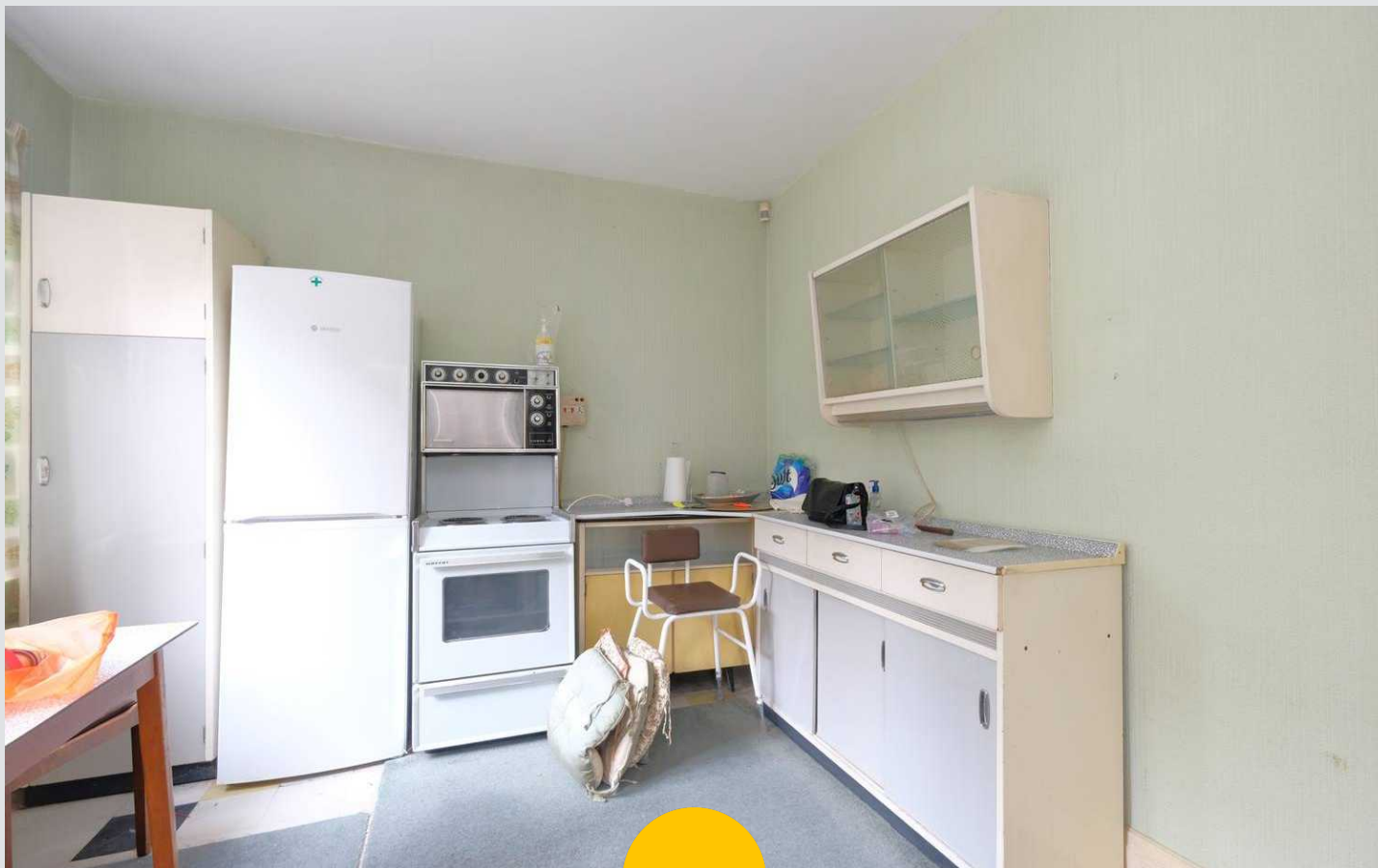
8' 6" x 6' 5" (2.59m x 1.96m)

Featuring a range of base units with integral stainless steel sink and space for a cooker. Complete with a ceiling light point, single glazed window, tiled walls and flooring.

W.C.

3' 1" x 2' 5" (0.94m x 0.74m)

Complete with a double glazed window and W.C. Fitted with tiled flooring.



Utility Room

6' 3" x 6' 1" (1.91m x 1.85m)

Featuring a range of wall and base units with integral stainless steel sink. Space for a washer and dryer. Complete with a ceiling light point, double glazed window and tiled flooring.

Landing

Complete with a ceiling light point, single glazed window and carpet flooring. Loft access.

Bedroom One

19' 0" x 12' 0" (5.79m x 3.66m)

Complete with two wall light points, double glazed bay window, double glazed window and wall mounted radiator. Fitted with carpet flooring.

Bedroom Two

12' 1" x 11' 8" (3.68m x 3.56m)

Featuring fitted wardrobes and fire surround. Complete with a ceiling light point, double glazed window and wall mounted radiator. Fitted with carpet flooring.

Bedroom Three

11' 0" x 10' 5" (3.35m x 3.18m)

Featuring fitted wardrobes and a fire surround. Complete with a ceiling light point, double glazed window and wall mounted radiator. Fitted with carpet flooring.

Bedroom Four

7' 4" x 7' 2" (2.24m x 2.18m)

Featuring fitted storage. Complete with a ceiling light point, double glazed window and lino flooring.

Bathroom

6' 7" x 6' 5" (2.01m x 1.96m)

Featuring a two piece suite including a bath and hand wash basin. Complete with a ceiling light point, double glazed window and heated towel rail. Fitted with carpet, tiled wall and flooring.



HILLS



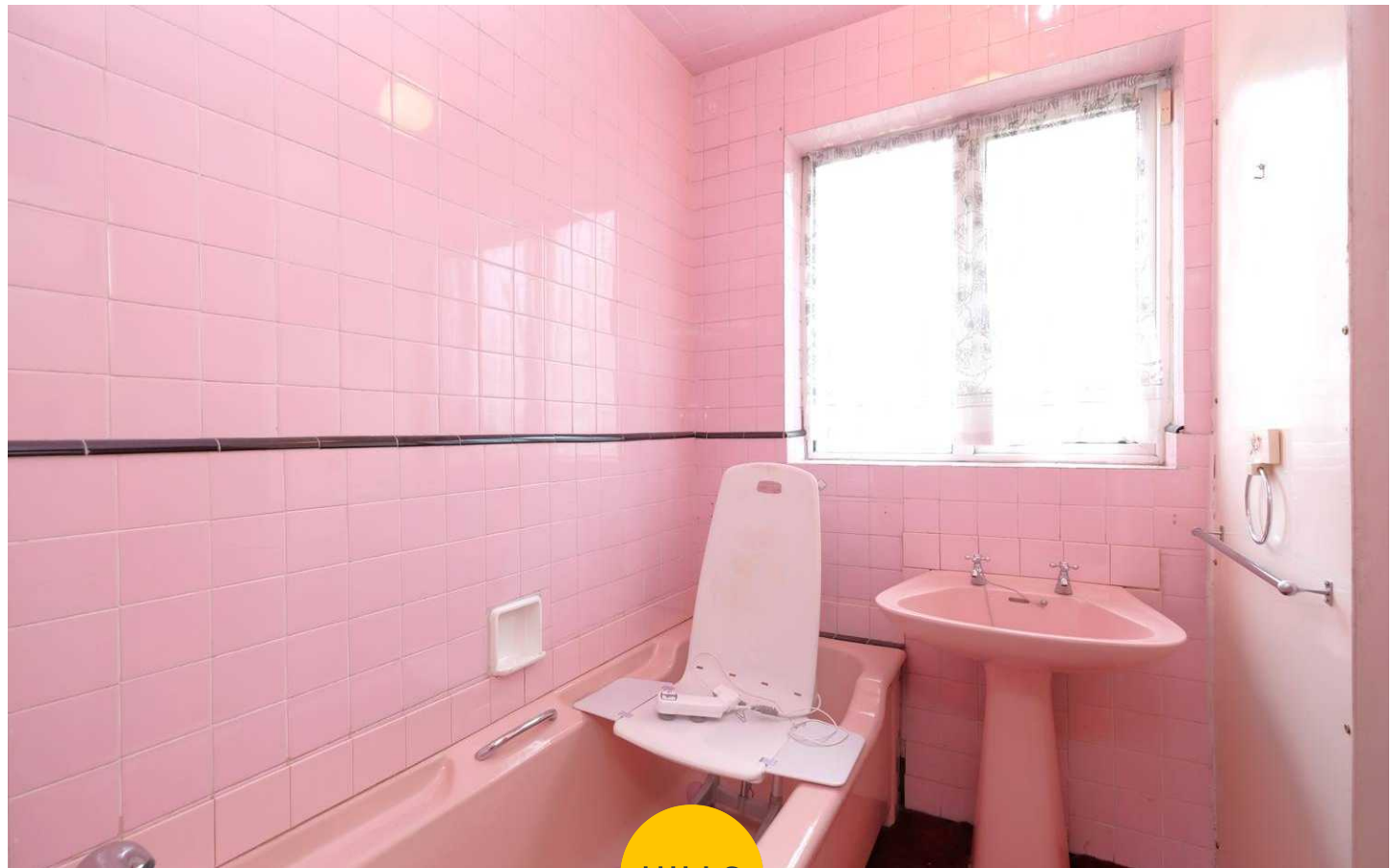
W.C.

4' 5" x 2' 6" (1.35m x 0.76m)

Complete with a ceiling light point, double glazed window and W.C. Fitted with lino flooring.

External

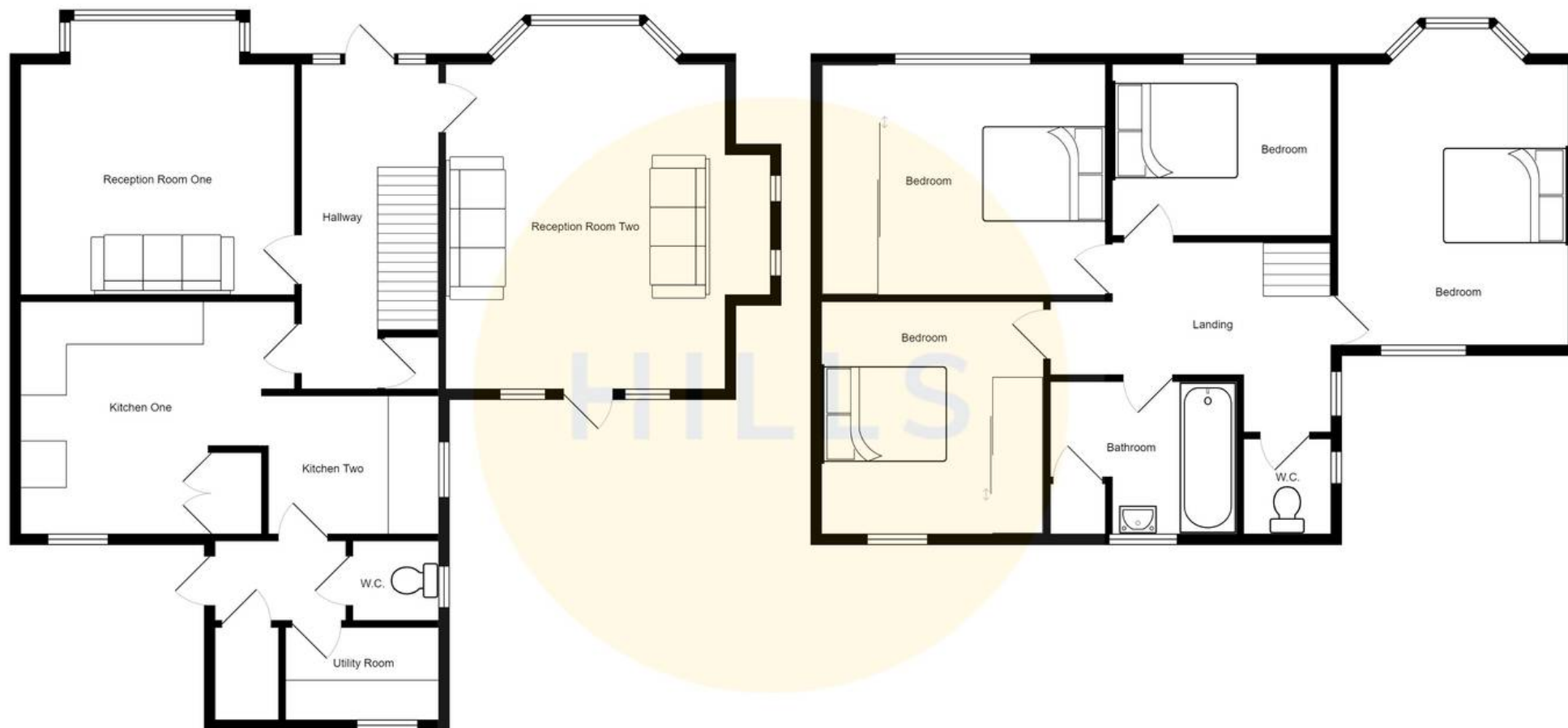
To the front of the property is a beautiful lawn with planted borders and a driveway providing off road parking for multiple cars. To the rear of the property is a garden with beautifully kept lawn bordered by 20FT (approx) trees with gated side access and a detached garage.





HILLS







Hills | Salfords Estate Agent

Hills Residential, Sentinel House Albert Street – M30 0SS

0161 707 4900

sales@hills.agency

www.hills.agency/



THE PROPERTY MISDESCRIPTIONS ACT 1991 The Agent has not tested any apparatus, equipment, fixtures and fittings or services and so cannot verify that they are in working order or fit for the purpose. A Buyer is advised to obtain verification from their Solicitor or Surveyor. References to the Tenure of a Property are based on information supplied by the Seller. The Agent has not had sight of the title documents. A Buyer is advised to obtain verification from their Solicitor. You are advised to check the availability of this property before travelling any distance to view. Every effort and precaution has been made to ensure these particulars are correct and not misleading but their accuracy is not guaranteed nor do they form part of any contract. If there is any point which is of particular importance to you, please contact us and we will provide any information you require. This is advisable, particularly if you intend to travel some distance to view the property. The mention of any appliances and services within these details does not imply that they are in full and efficient working order. These particulars are in draft form awaiting Vendors confirmation of their accuracy. These details must therefore be taken as a guide only.