

ALARM
SECURITY
SERVICES

20

Fir Street, Eccles

Manchester



In Excess of £160,000

Fir Street

Eccles, Manchester

Conveniently located two bed terrace with chain-free sale. Cosy lounge, fitted kitchen, two double bedrooms with storage, sunny rear garden. Close to amenities and transport links, ready to move in. Council Tax band: A

Tenure: Leasehold

- Offered with No Onward Chain
- Perfect First Time Buy or Downsize
- Cosy Lounge & Second Reception Room
- Modern Kitchen with Ample Storage Space
- Two Double Bedrooms Fitted wardrobes to Master & Fitted Closet in the Second
- Three Piece White Timeless Bathroom Suite
- Low Maintenance Paved Rear Yard, that Benefits from the Sun
- Located within Walking Distance to Bus, Train & Tram Stations and Surrounded by Excellent Motorway Links
- Close to Excellent Local Amenities



Lounge

41' 0" x 37' 9" (12.50m x 11.50m)

A bright lounge with a fire surround. Complete with a ceiling light point and double glazed windows, with a wall mounted radiator and laminate flooring.

Dining Room

41' 0" x 38' 9" (12.50m x 11.80m)

Spacious dining room with understairs storage and a fire surround, with a ceiling light point and double glazed windows. Completed with a wall mounted radiator and laminate flooring.

Kitchen

33' 2" x 22' 8" (10.10m x 6.90m)

Features wall and base units with a gas hob and electric oven, plenty space for a fridge freezer and a washer. Completed with a ceiling light point and double glazed windows, tiled walls and and flooring. Access to the loft.

Landing

Ceiling light point and loft access.

Bedroom One

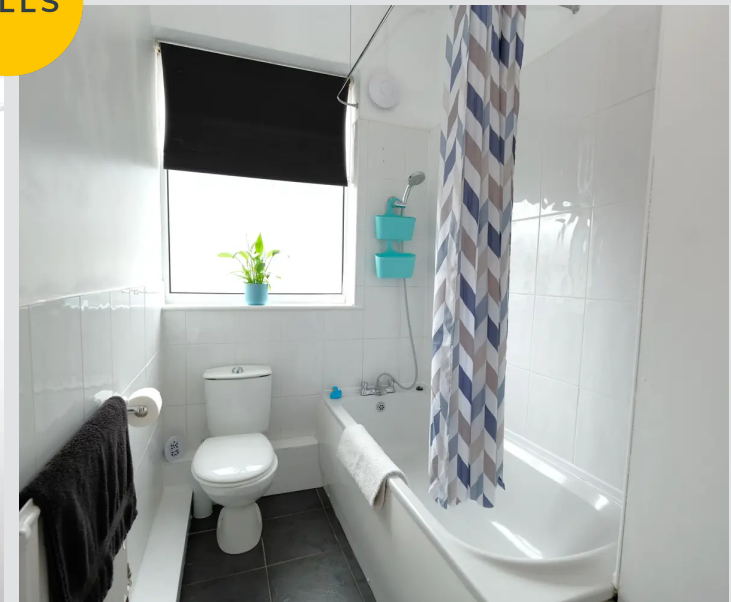
41' 0" x 37' 5" (12.50m x 11.40m)

Spacious room with fitted wardrobes and ceiling light point, fitted with a double glazed window and wall mounted radiator. Completed with laminate flooring.

Bedroom Two

39' 1" x 22' 8" (11.90m x 6.90m)

Features a storage closet and ceiling light point, Fitted with double glazed windows and wall mounted radiator. Completed with laminate flooring.



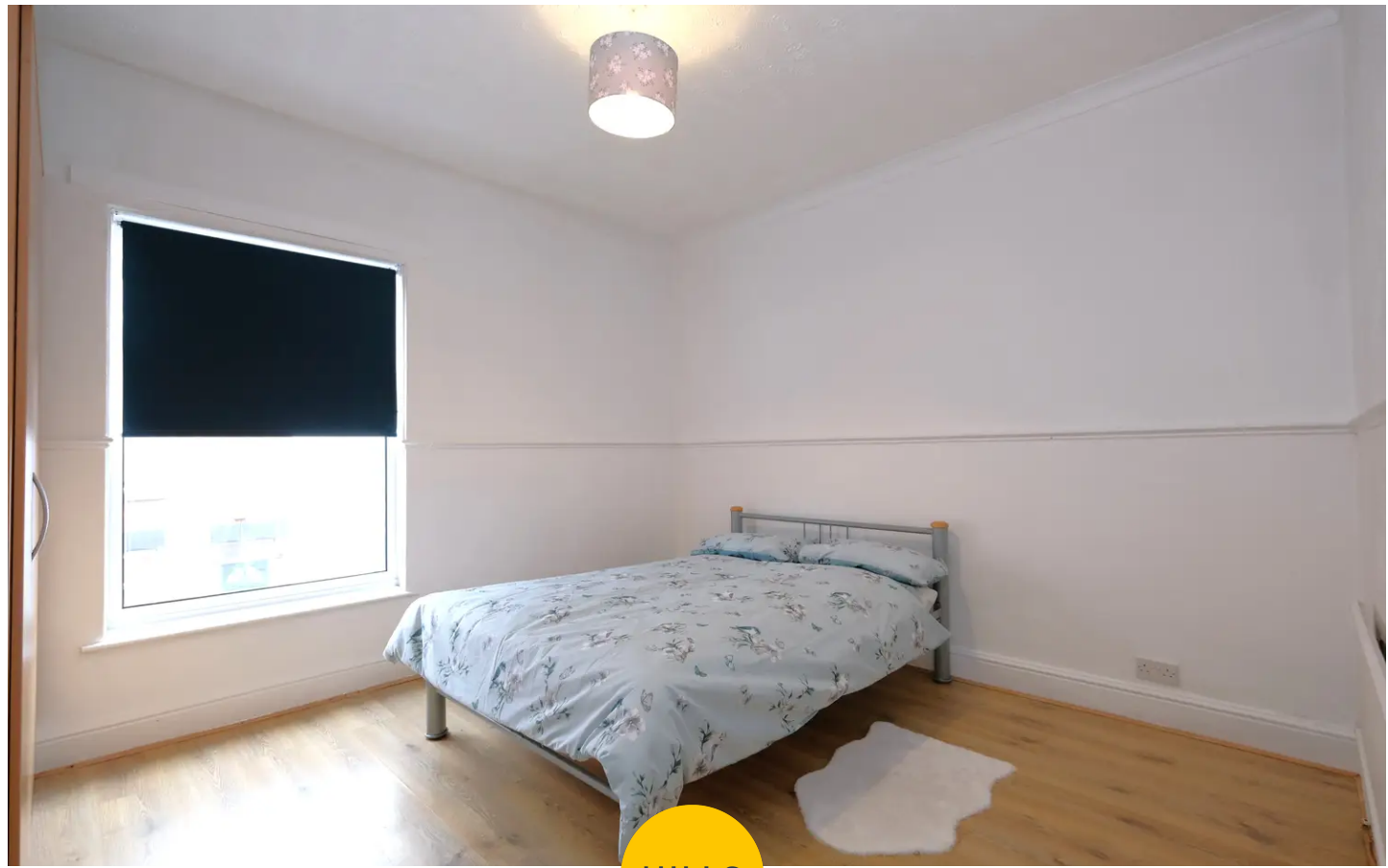
Bathroom

29' 10" x 16' 9" (9.10m x 5.10m)

Features a Three piece suite including, bath tub, hand wash basin and WC. Fitted with ceiling light point and double glazed windows. Completed with wall mounted radiator and tiled flooring and walls.

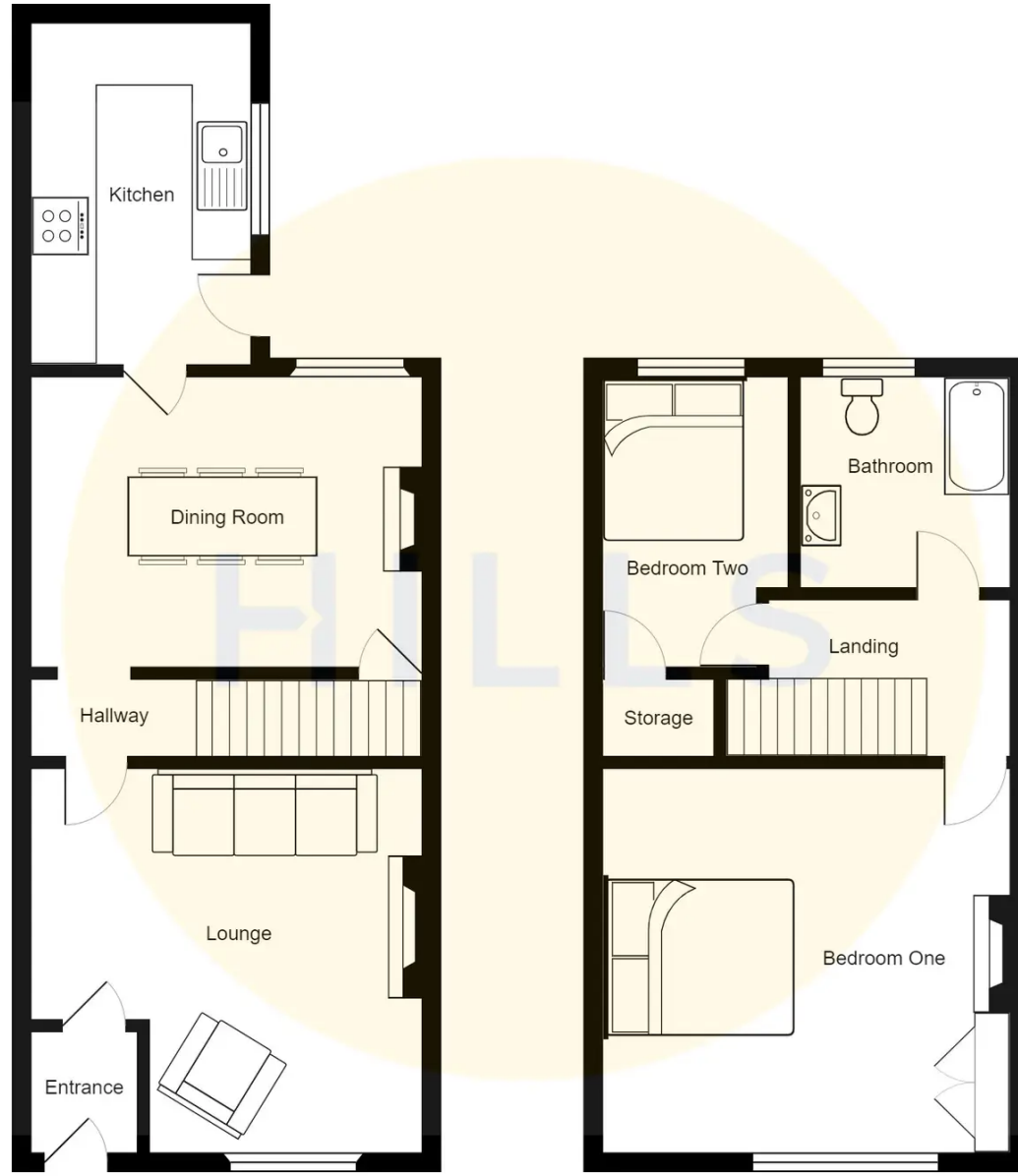
External

To the rear of the property is a low maintenance paved gated yard.



HILLS







Hills | Salfords Estate Agent

Hills Residential, Sentinel House Albert Street - M30 0SS

0161 707 4900

sales@hills.agency

www.hills.agency/



THE PROPERTY MISDESCRIPTIONS ACT 1991 The Agent has not tested any apparatus, equipment, fixtures and fittings or services and so cannot verify that they are in working order or fit for the purpose. A Buyer is advised to obtain verification from their Solicitor or Surveyor. References to the Tenure of a Property are based on information supplied by the Seller. The Agent has not had sight of the title documents. A Buyer is advised to obtain verification from their Solicitor. You are advised to check the availability of this property before travelling any distance to view. Every effort and precaution has been made to ensure these particulars are correct and not misleading but their accuracy is not guaranteed nor do they form part of any contract. If there is any point which is of particular importance to you, please contact us and we will provide any information you require. This is advisable, particularly if you intend to travel some distance to view the property. The mention of any appliances and services within these details does not imply that they are in full and efficient working order. These particulars are in draft form awaiting Vendors confirmation of their accuracy. These details must therefore be taken as a guide only.