



Bromsgrove Avenue, Eccles

Manchester



Offers in Region of £220,000

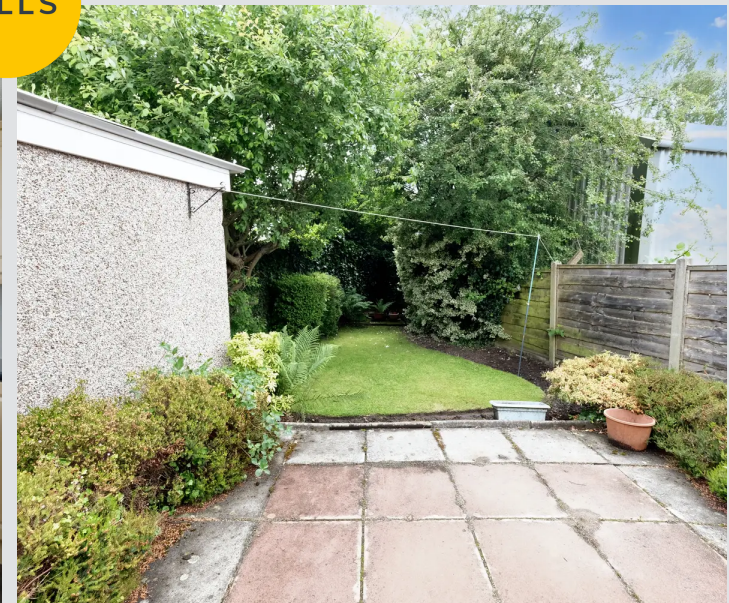
Bromsgrove Avenue

Eccles, Manchester

Extended two bed semi-detached house in Winton area, no chain. Spacious lounge, kitchen/dining room. Two double bedrooms with fitted wardrobes, three piece bathroom. Private courtyard, side garden, off-road parking, detached garage. Excellent transport links and amenities nearby. Council Tax band: C

Tenure: Leasehold

- Located on a Quiet Cul De Sac within Winton & Offered with No Onward Chain
- Bay Fronted 23ft (approx) Lounge
- Extended Fitted Kitchen & Dining Room with Integrated Appliances
- Two Double Bedrooms, Master Complete with Fitted wardrobes
- Three Piece Fitted Bathroom Suite
- Private Court Yard & Well Kept Side Garden with Lawn
- Off Road Parking for Multiple Cars & Detached Garage
- Surrounded by Excellent Transport Links & Brilliant Amenities



Entrance Hallway

Entered via a uPVC front door. Complete with a wall mounted radiator and carpet flooring.

Lounge

23' 2" x 12' 6" (7.06m x 3.81m)

Featuring an electric fire. Complete with two ceiling light points, double glazed bay window, French doors and two wall mounted radiators. Fitted with carpet flooring.

Kitchen / Diner

13' 9" x 9' 9" (4.19m x 2.97m)

Featuring complementary wall and base units with integral stainless steel sink, electric oven and gas hob. Space for a washer and integral undercounter fridge freezer. Complete with a ceiling light point, two double glazed windows and wall mounted radiator. Fitted with a uPVC door and laminate tile flooring.

Landing

Complete with a ceiling light point, double glazed window and carpet flooring.

Bedroom One

15' 8" x 12' 3" (4.78m x 3.73m)

Featuring fitted wardrobes. Complete with a ceiling light point, two double glazed windows and wall mounted radiator. Fitted with carpet flooring.

Bedroom Two

10' 6" x 9' 0" (3.20m x 2.74m)

Complete with a ceiling light point, double glazed window and wall mounted radiator. Fitted with carpet flooring.



HILLS



Bathroom

6' 5" x 5' 5" (1.96m x 1.65m)

Featuring a three-piece suite including a bath with shower over, hand wash basin and W.C. Complete with a ceiling light point, double glazed window and wall mounted radiator. Fitted with tiled walls and laminate tile flooring.

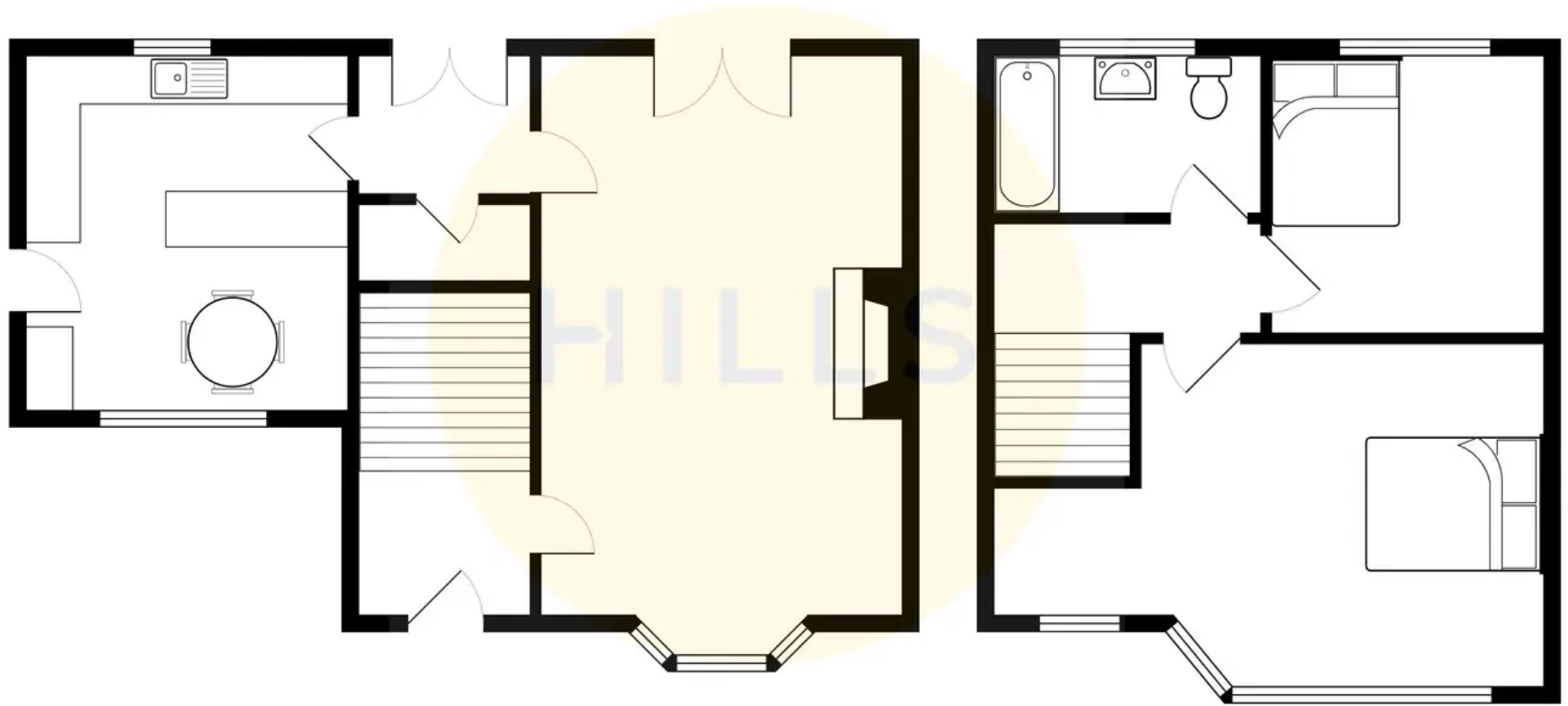
External

To the front of the property is off road parking and a detached garage. A side garden with paved patio, lawn and shrubbed borders with gated access to the front. Paved courtyard to the rear of the property.



HILLS







Hills | Salfords Estate Agent

Hills Residential, Sentinel House Albert Street - M30 0SS

0161 707 4900

sales@hills.agency

www.hills.agency/



THE PROPERTY MISDESCRIPTIONS ACT 1991 The Agent has not tested any apparatus, equipment, fixtures and fittings or services and so cannot verify that they are in working order or fit for the purpose. A Buyer is advised to obtain verification from their Solicitor or Surveyor. References to the Tenure of a Property are based on information supplied by the Seller. The Agent has not had sight of the title documents. A Buyer is advised to obtain verification from their Solicitor. You are advised to check the availability of this property before travelling any distance to view. Every effort and precaution has been made to ensure these particulars are correct and not misleading but their accuracy is not guaranteed nor do they form part of any contract. If there is any point which is of particular importance to you, please contact us and we will provide any information you require. This is advisable, particularly if you intend to travel some distance to view the property. The mention of any appliances and services within these details does not imply that they are in full and efficient working order. These particulars are in draft form awaiting Vendors confirmation of their accuracy. These details must therefore be taken as a guide only.