



Crimson Gardens, Eccles

Manchester



Offers in Region of £455,000

Crimson Gardens

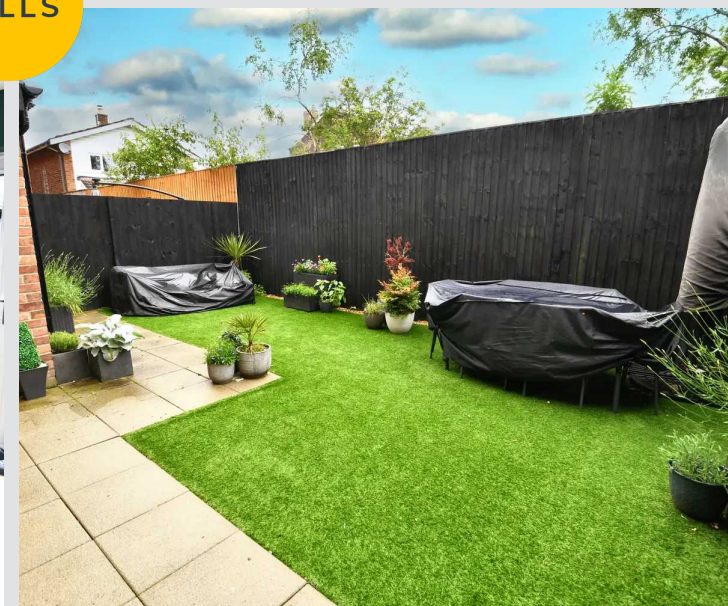
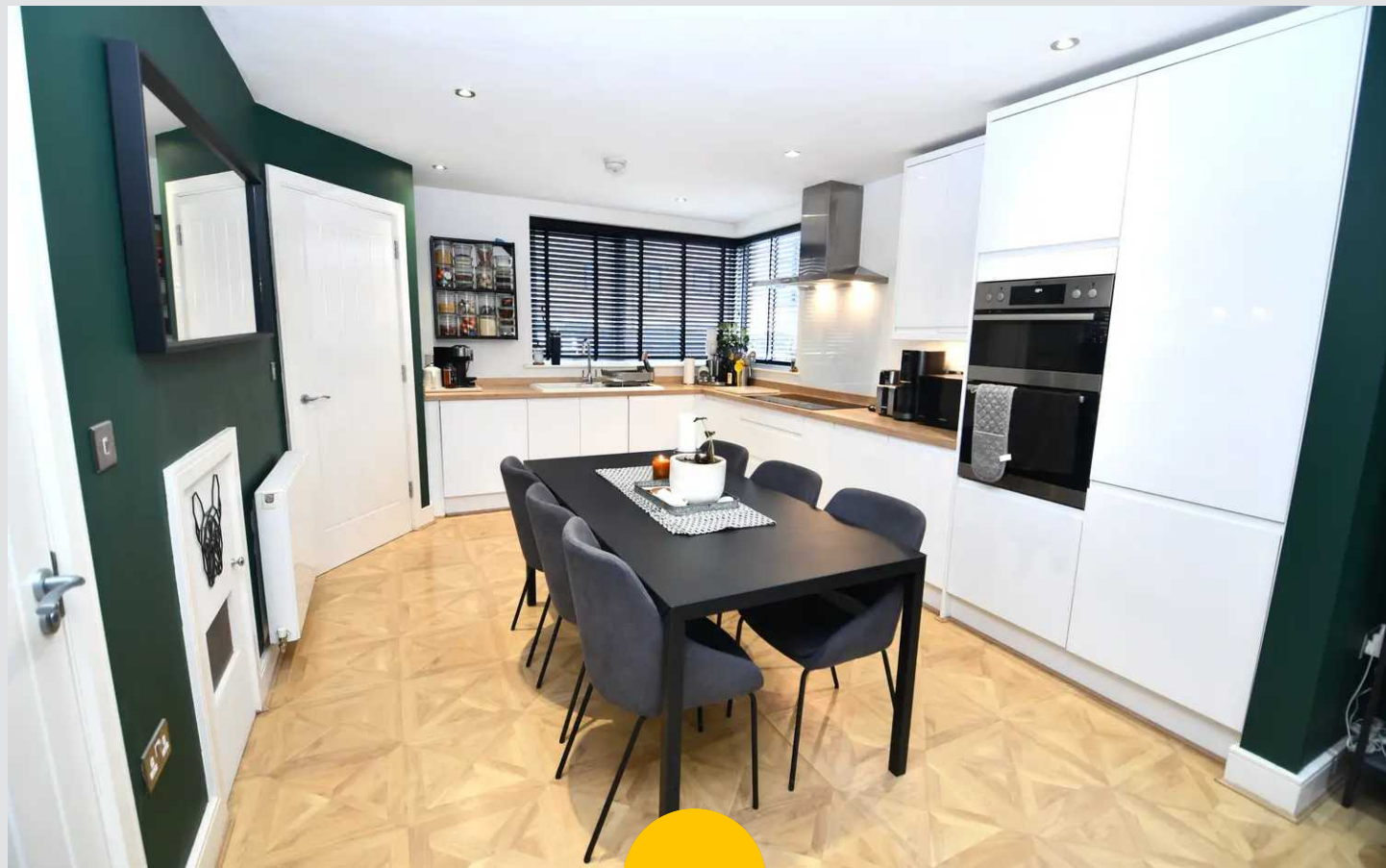
Eccles, Manchester

Impeccable four bed semi-detached house in sought-after Monton Village. Open-plan living, four double bedrooms, office space, low-maintenance garden, detached garage, off-road parking with electrical charging point. Close to amenities, transport links, and motorways.

Council Tax band: D

Tenure: Freehold

- Tucked away on a Cul De Sac in the Desirable Monton Village & Presented to a Show Home Standard
- Laid over Three Floors
- Open Plan Kitchen, Living & Dining Space
- Four Double Bedrooms & an Office
- Three Piece Family Bathroom, En Suite to Master & Guest W.C.
- Low maintenance Garden, Detached Garage with Front & Side Access
- Off Road Parking with Electrical Charging Point
- Surrounded by a Plethora of Amenities including Shops, Bars, Restaurants & Scenic Walks
- Well Served by Public Transport & Motorway Links



Entrance Hallway

Entered via a composite front door. Complete with ceiling light point, double glazed window and wall mounted radiator. Fitted with lino flooring.

Lounge / Kitchen / Diner

26' 6" x 15' 1" (8.08m x 4.60m)

A modern, open plane lounge, kitchen and dining space complete with ceiling spotlights, two double glazed windows, French doors leading to the rear and a wall mounted radiator. Featuring a range of modern wall and base units with integral sink, fridge freezer, dishwasher, washing machine, hob and oven. Fitted with laminate vinyl tile flooring.

Downstairs W.C.

5' 6" x 3' 3" (1.68m x 0.99m)

Comprising of a two piece suite - W.C and hand wash basin. Complete with a ceiling light point, heated towel rail, part tiled walls and lino flooring.

First Floor Landing

Complete with a ceiling light point, wall mounted radiator and storage cupboard. Fitted with carpet flooring.

Family Bathroom

6' 5" x 6' 3" (1.95m x 1.90m)

Fitted with a modern three piece suite comprising of WC, hand wash basin and bath with double headed shower above. Double glazed window, towel radiator, part tiled walls, lino flooring and ceiling light point.

Bedroom One

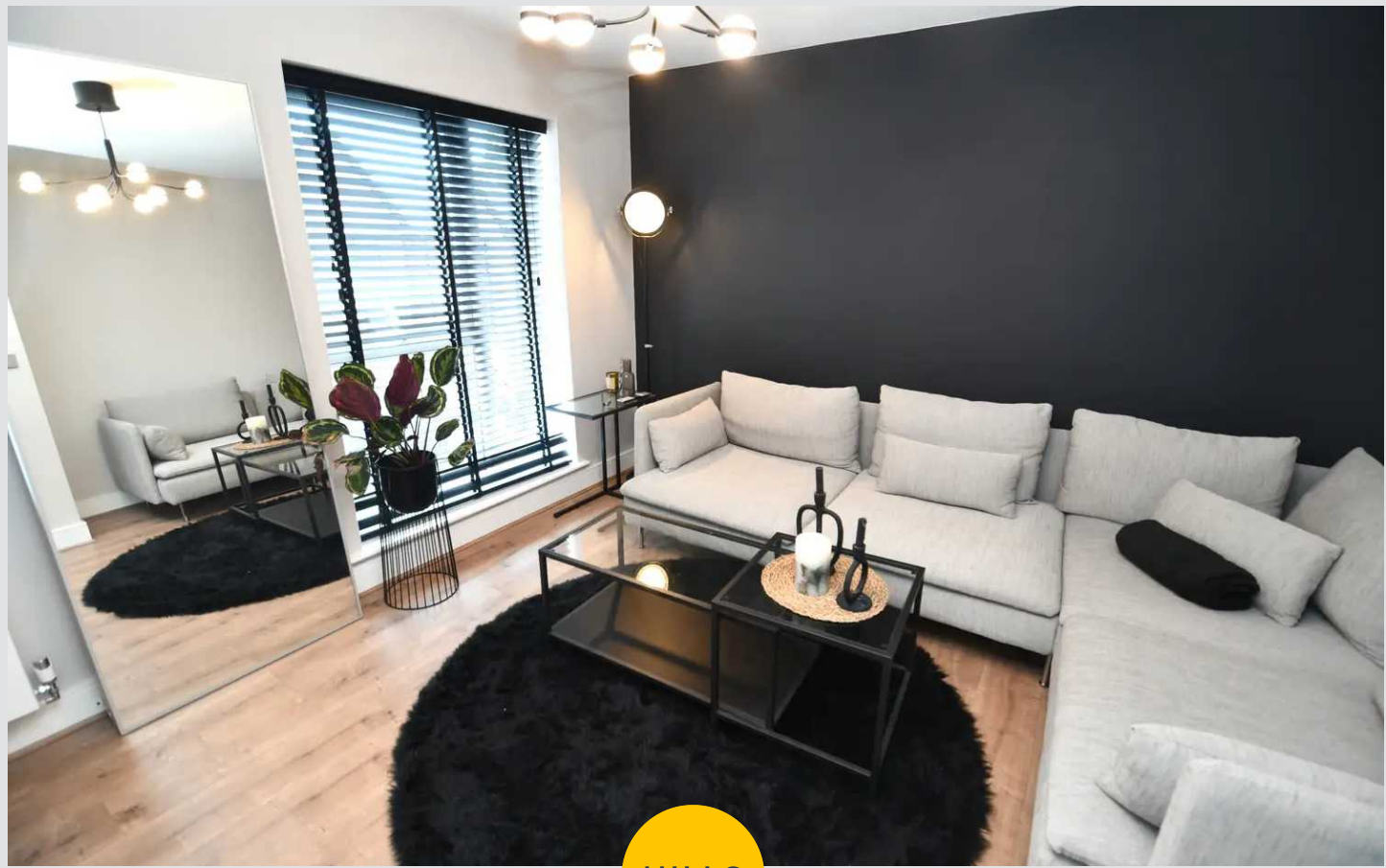
12' 7" x 8' 4" (3.83m x 2.54m)

Complete with a ceiling light point, double glazed window and wall mounted radiator. Fitted with laminate flooring.

Bedroom Two

12' 7" x 8' 4" (3.83m x 2.54m)

Complete with a ceiling light point, double glazed window and wall mounted radiator. Fitted with laminate flooring.



Office

6' 3" x 5' 0" (1.90m x 1.52m)

Complete with a ceiling light point, double glazed window and wall mounted radiator. Fitted with laminate flooring.

Second Floor Landing

Complete with a ceiling light point, double glazed window and wall mounted radiator. Fitted with carpet flooring. Loft access.

Bedroom Three

Complete with a ceiling light point, three double glazed windows and a wall mounted radiator. Fitted with a storage cupboard and laminate flooring.

Bedroom Four

13' 6" x 11' 7" (4.11m x 3.53m)

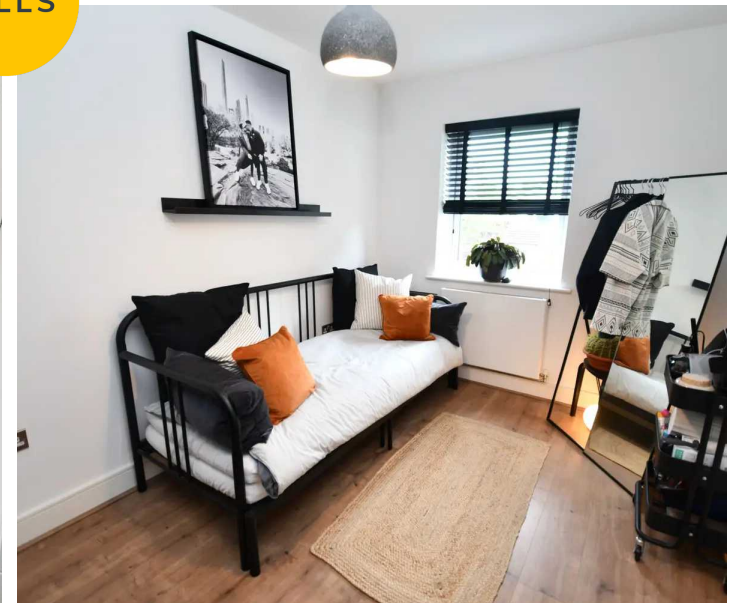
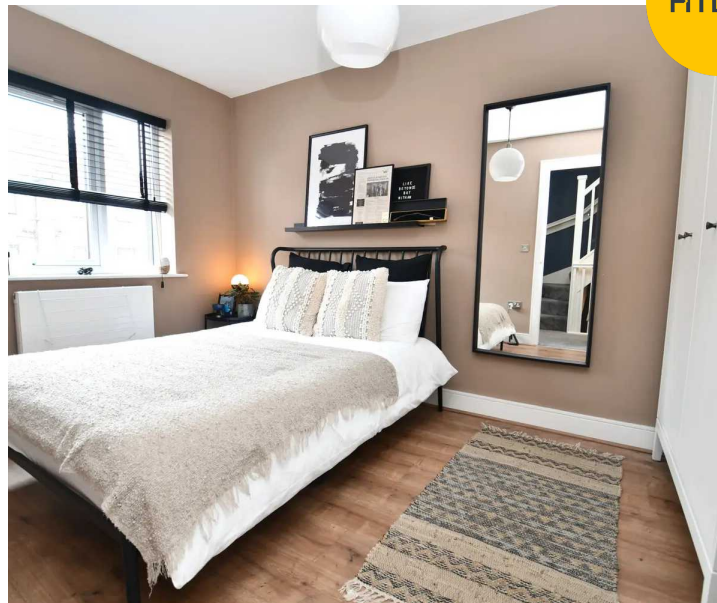
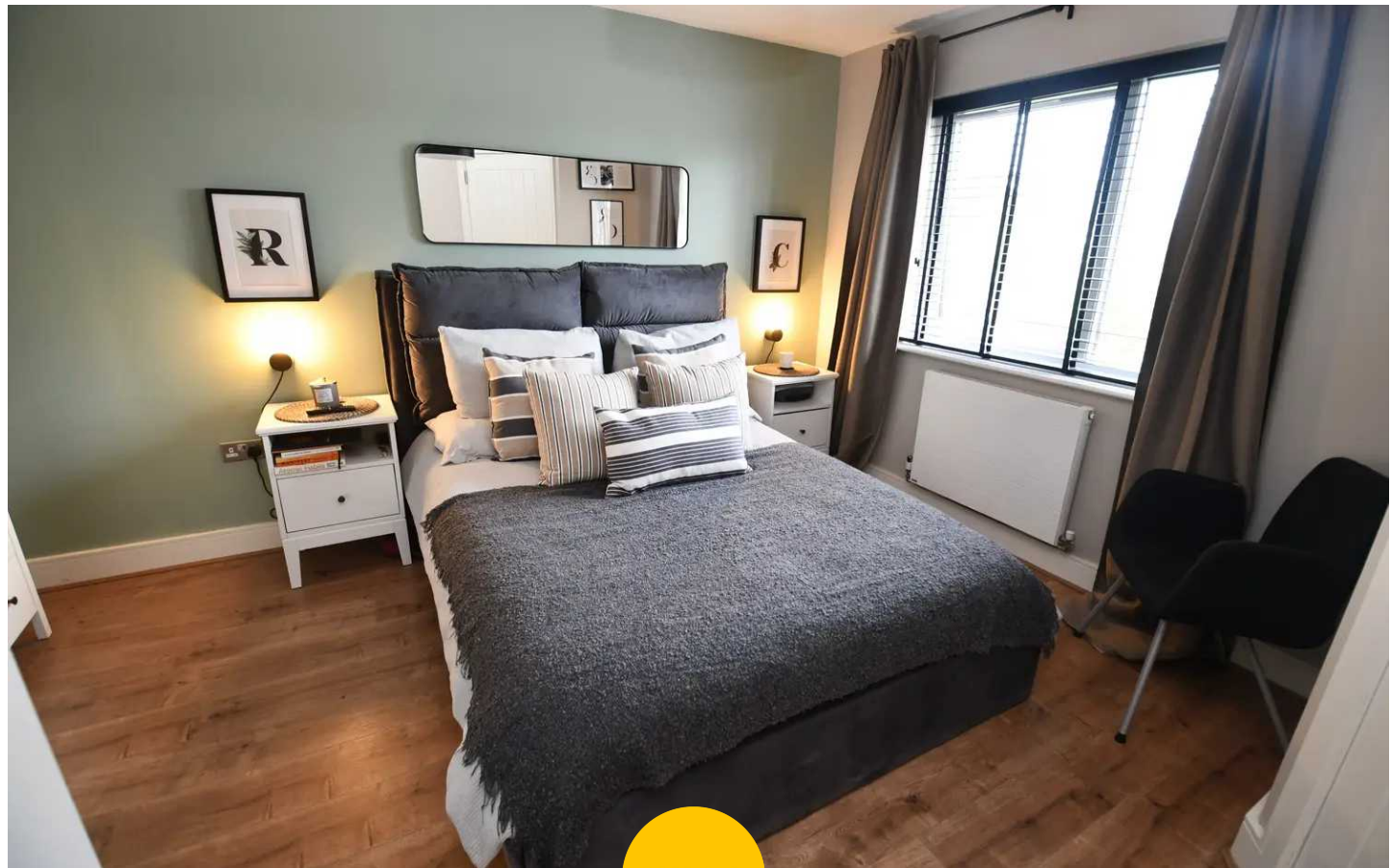
Featuring fitted wardrobes. Complete with a ceiling light point, double glazed window and wall mounted radiator. Fitted with laminate flooring.

En-suite

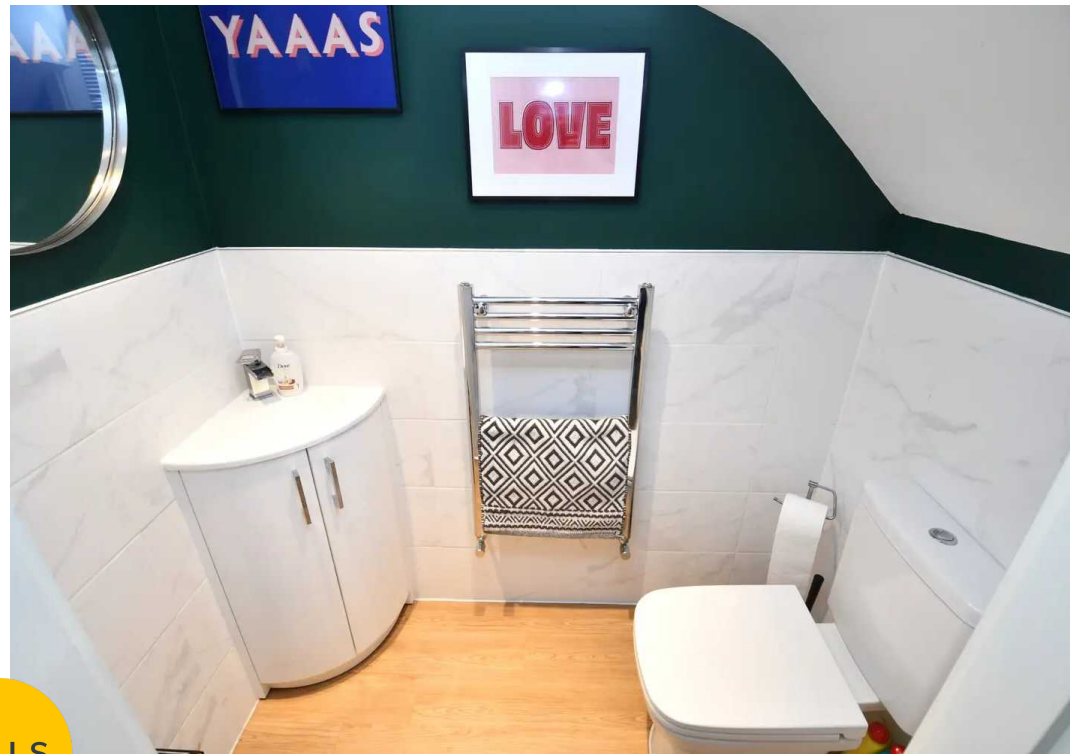
Fitted with a modern three piece suite comprising of WC, hand wash basin and shower cubicle. Double glazed window, spot lighting, towel radiator, part tiled walls and lino tiled flooring.

External

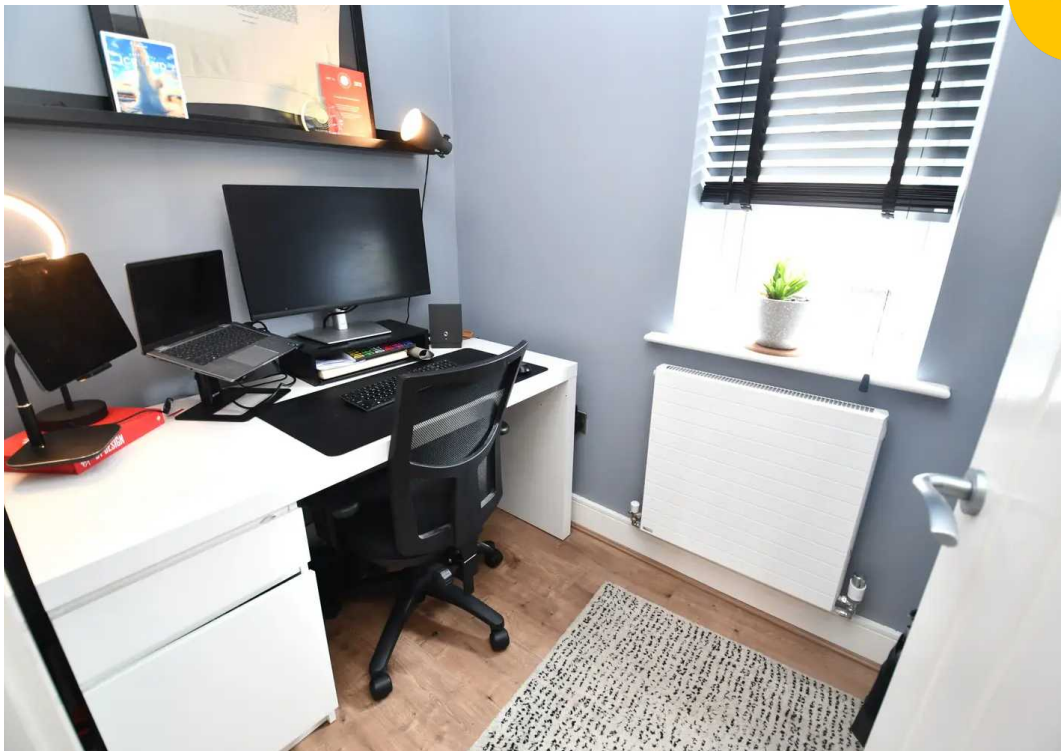
The front compromises of off road parking for one car. The rear compromises of a paved seating area, artificial grass, raised fence panels and rear access to the garage.

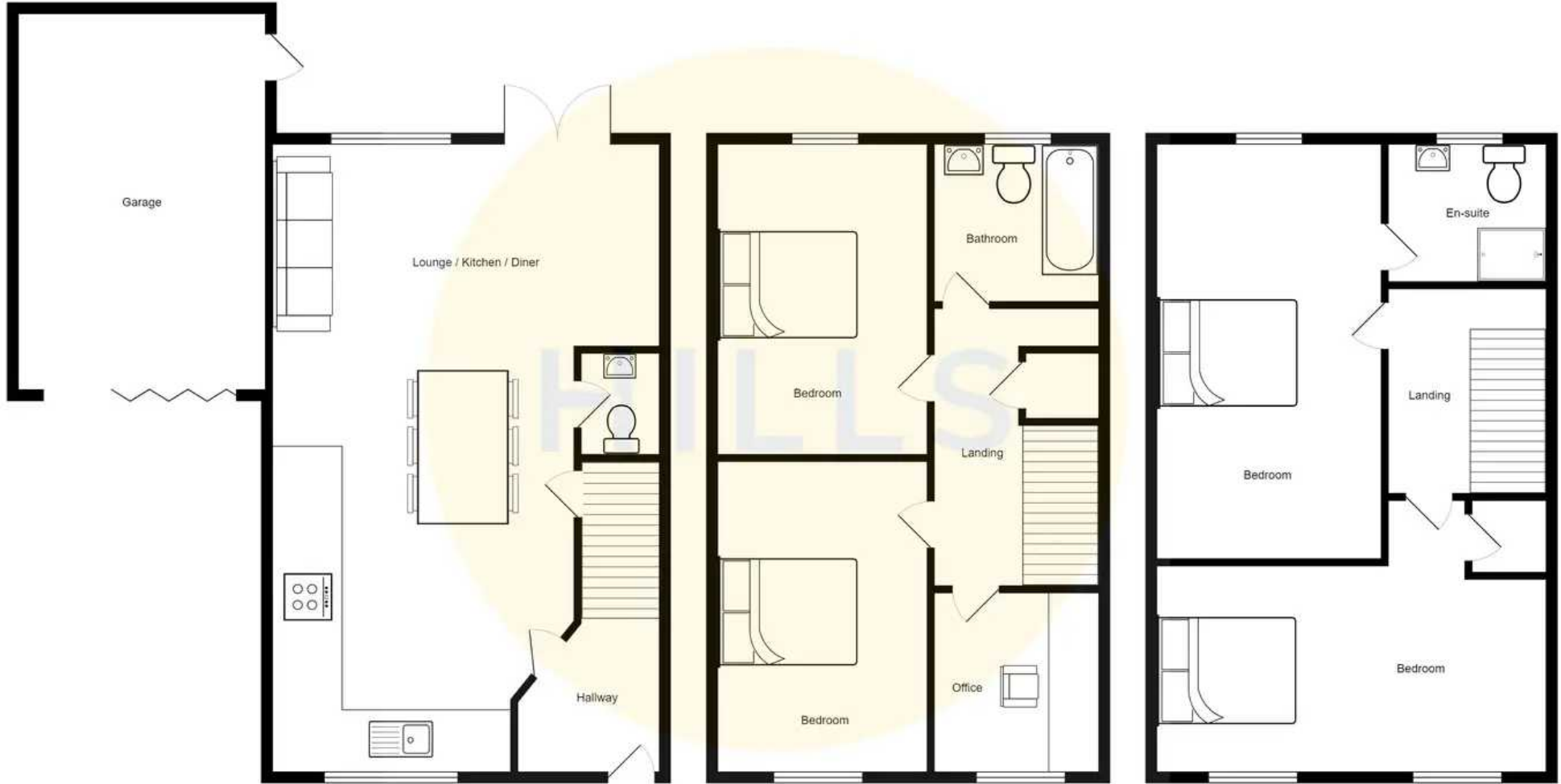


HILLS



HILLS







Hills | Salfords Estate Agent

Hills Residential, Sentinel House Albert Street - M30 0SS

0161 707 4900

sales@hills.agency

www.hills.agency/



THE PROPERTY MISDESCRIPTIONS ACT 1991 The Agent has not tested any apparatus, equipment, fixtures and fittings or services and so cannot verify that they are in working order or fit for the purpose. A Buyer is advised to obtain verification from their Solicitor or Surveyor. References to the Tenure of a Property are based on information supplied by the Seller. The Agent has not had sight of the title documents. A Buyer is advised to obtain verification from their Solicitor. You are advised to check the availability of this property before travelling any distance to view. Every effort and precaution has been made to ensure these particulars are correct and not misleading but their accuracy is not guaranteed nor do they form part of any contract. If there is any point which is of particular importance to you, please contact us and we will provide any information you require. This is advisable, particularly if you intend to travel some distance to view the property. The mention of any appliances and services within these details does not imply that they are in full and efficient working order. These particulars are in draft form awaiting Vendors confirmation of their accuracy. These details must therefore be taken as a guide only.