

**Worsley Road, Eccles**

Manchester



Offers Over **£180,000**



# Worsley Road

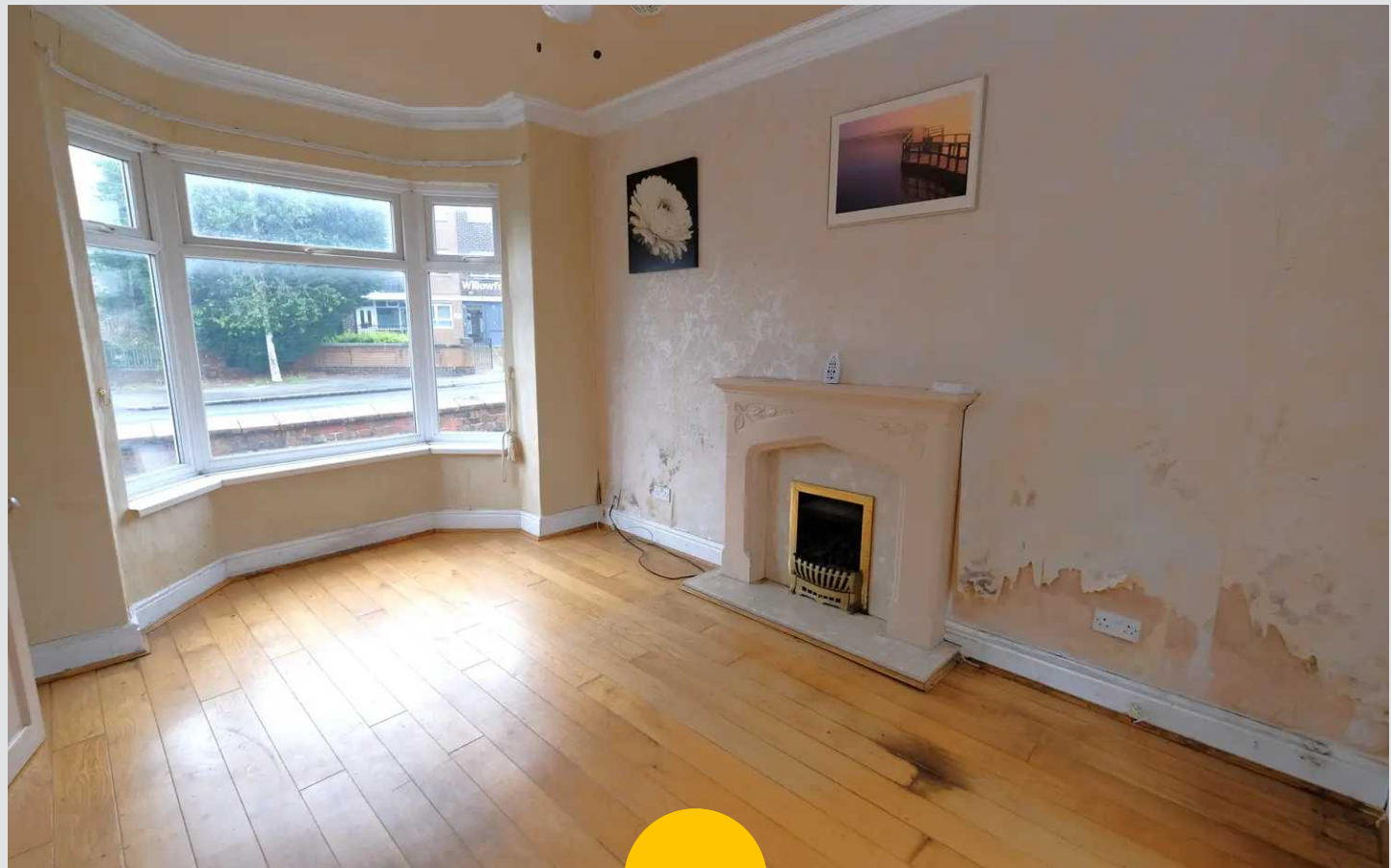
Eccles, Manchester

Deceptively spacious property in Winton Village, chain-free. Ground floor offers two reception rooms and a fitted kitchen. Three double bedrooms, fitted wardrobes to the master. Low maintenance garden, detached garage. Convenient location near amenities, schools, transport links.

Council Tax band: B

Tenure: Freehold

- Deceptively Spacious Terrace Property Offered with No Vendor Chain
- Bay Fronted Lounge & Second Reception Room
- Fitted Kitchen
- Three Double Bedrooms, Fitted Wardrobes to the Master
- Family Bathroom & Separate Shower Room
- Gardens to the Front & Sun Drenched Rear
- Detached Garage to the Rear
- Excellently Located Close to Amenities, Schools & Brilliant Transport Links



### Reception Room One

14' 0" x 10' 10" (4.27m x 3.30m)

A spacious reception room complete with a ceiling light point, double glazed window and wall mounted radiator. Fitted with carpet flooring.

### Reception Room Two

15' 2" x 10' 0" (4.63m x 3.06m)

Featuring patio doors to the rear of the property. Complete with a ceiling light point, double glazed bay window and wall mounted radiator. Fitted with laminate flooring.

### Landing

Complete with a ceiling light point and carpet flooring.

### Bedroom One

14' 0" x 10' 11" (4.27m x 3.32m)

Featuring built-in wardrobes. Complete with two ceiling light points, double glazed window and wall mounted radiator. Fitted with carpet flooring.

### Bedroom Two

11' 7" x 8' 6" (3.53m x 2.60m)

Complete with a ceiling light point, double glazed window and wall mounted radiator. Fitted with carpet flooring.

### Bedroom Three

10' 0" x 9' 8" (3.06m x 2.94m)

Complete with a ceiling light point, double glazed window and wall mounted radiator. Fitted with carpet flooring.

### Bathroom

5' 4" x 6' 0" (1.62m x 1.83m)

Featuring a three-piece suite including a bath, hand wash basin and W.C. Complete with ceiling spotlights, double glazed window and lino flooring.

### Shower Room

3' 0" x 9' 10" (0.91m x 3.00m)

Featuring a shower cubicle, hand wash basin and W.C.

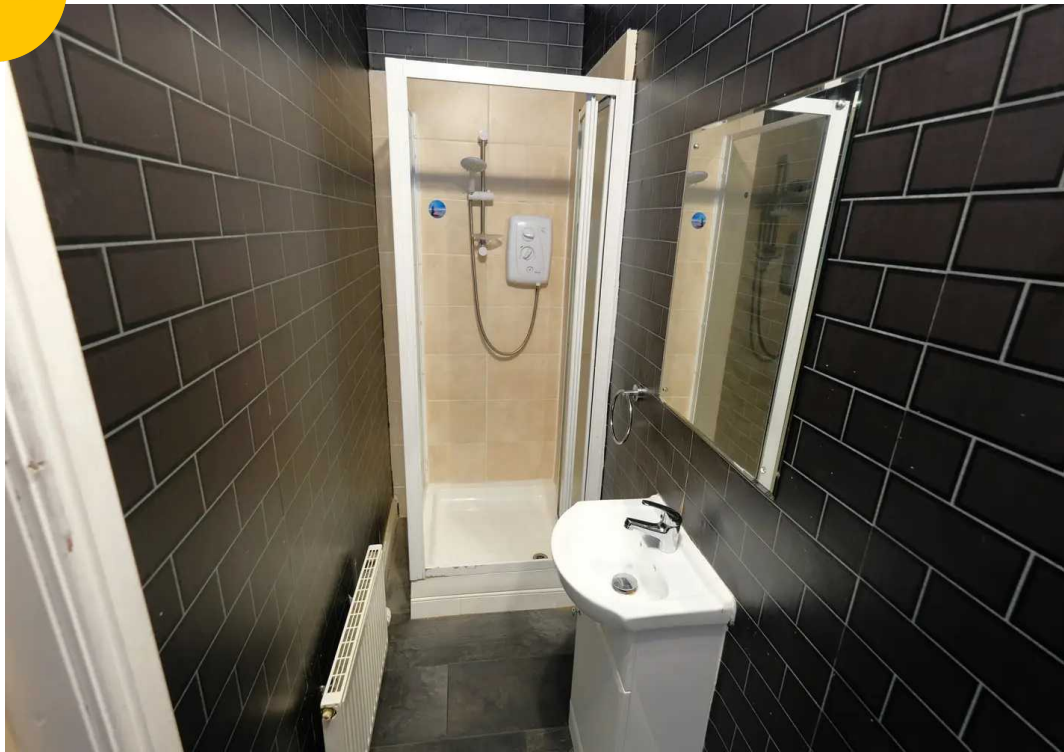
Complete with a ceiling light point, wall mounted radiator and laminate vinyl tile flooring.







HILLS









## Hills | Salfords Estate Agent

Hills Residential, Sentinel House Albert Street - M30 0SS

0161 707 4900

[sales@hills.agency](mailto:sales@hills.agency)

[www.hills.agency/](http://www.hills.agency/)



THE PROPERTY MISDESCRIPTIONS ACT 1991 The Agent has not tested any apparatus, equipment, fixtures and fittings or services and so cannot verify that they are in working order or fit for the purpose. A Buyer is advised to obtain verification from their Solicitor or Surveyor. References to the Tenure of a Property are based on information supplied by the Seller. The Agent has not had sight of the title documents. A Buyer is advised to obtain verification from their Solicitor. You are advised to check the availability of this property before travelling any distance to view. Every effort and precaution has been made to ensure these particulars are correct and not misleading but their accuracy is not guaranteed nor do they form part of any contract. If there is any point which is of particular importance to you, please contact us and we will provide any information you require. This is advisable, particularly if you intend to travel some distance to view the property. The mention of any appliances and services within these details does not imply that they are in full and efficient working order. These particulars are in draft form awaiting Vendors confirmation of their accuracy. These details must therefore be taken as a guide only.