



Armitage Street, Eccles

Manchester



Offers Over £170,000

Armitage Street

Eccles, Manchester

Prime location, inviting two bed end terraced house with converted loft. Ideal for first-time buyers/investors. Spacious lounge, open plan kitchen/dining. Master bed, loft space, modern bathroom. Garden potential. Close to shops, transport, Trafford Centre. Ideal for daily commute and leisure.

Council Tax band: A

Tenure: Leasehold

- Two Bedroom Terrace Property with Fully Converted Loft Space
- Offered with No Onward Chain
- Spacious Lounge
- Open Plan Kitchen & Dining Area with Additional Storage beneath the stairs
- Generous Master & Second Bedroom with Access to the Loft Space which has been Previously used as a Double Bedroom
- Modern Bathroom Suite
- Garden to the Rear, offering Potential to Create the Perfect Outside Space
- Perfectly Located Close to Shops, Train & Bus Stations
- Within Walking Distance to the Trafford Centre



Lounge

13' 2" x 10' 5" (4.01m x 3.18m)

Entered via a hardwood front door. Complete with a ceiling light point, alarm controls and wall mounted radiator. Fitted with laminate flooring.

Kitchen / Diner

13' 2" x 10' 6" (4.01m x 3.20m)

Featuring wall and base units with stainless steel extractor, electric oven and gas hob. Complete with a ceiling light point, double glazed window and wall mounted radiator. Fitted with laminate flooring. Boiler.

Landing

Complete with a ceiling light point, and carpet flooring.

Bedroom One

13' 2" x 10' 5" (4.01m x 3.18m)

Complete with a ceiling light point, double glazed window and wall mounted radiator. Fitted with laminate flooring.

Bedroom Two

13' 5" x 7' 5" (4.09m x 2.26m)

Complete with a ceiling light point, double glazed window and wall mounted radiator. Fitted with laminate flooring.

Bathroom

7' 4" x 5' 1" (2.24m x 1.55m)

Featuring a three-piece suite including bath, hand wash basin and W.C. Complete with a ceiling light point, double glazed window and wall mounted radiator. Fitted with part tiled walls and lino flooring.

Loft

13' 1" x 12' 6" (3.99m x 3.81m)

Complete with a ceiling light point, Velux window and storage in the eaves. Fitted with laminate flooring.

External

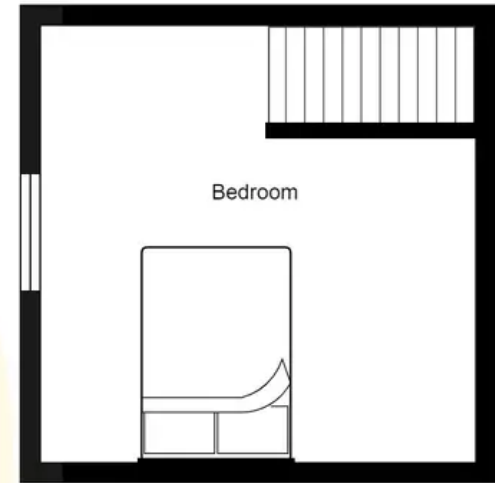
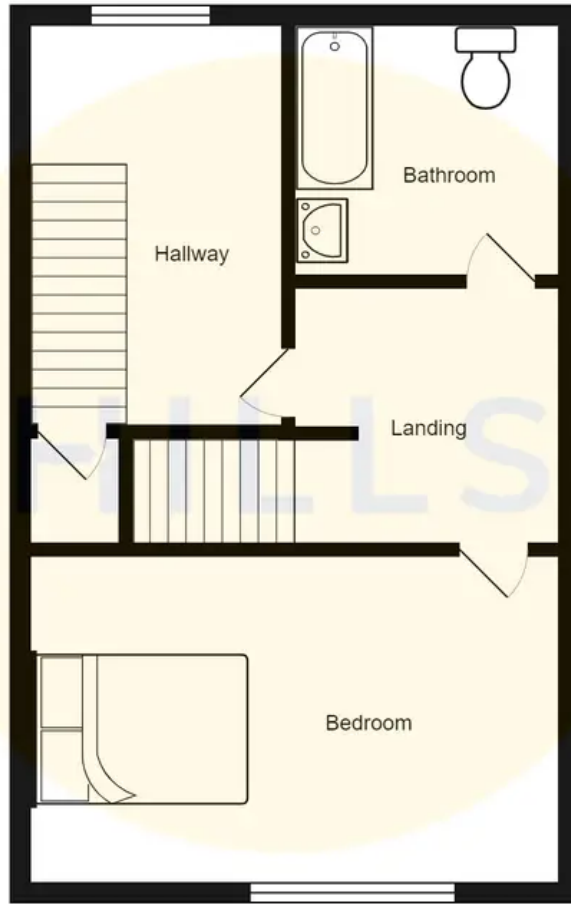
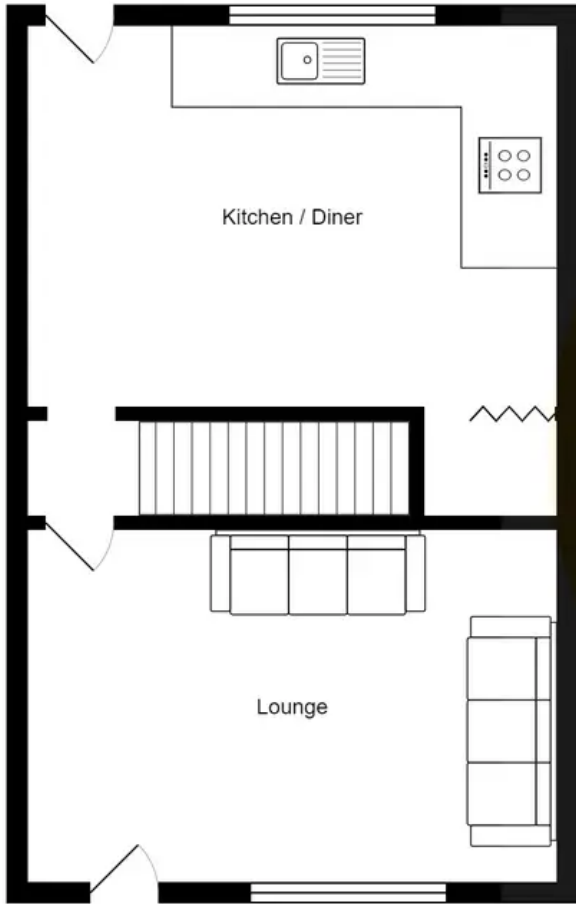
To the rear of the property is a yard with gated access.





HILLS







Hills | Salfords Estate Agent

Hills Residential, Sentinel House Albert Street - M30 0SS

0161 707 4900

sales@hills.agency

www.hills.agency/



THE PROPERTY MISDESCRIPTIONS ACT 1991 The Agent has not tested any apparatus, equipment, fixtures and fittings or services and so cannot verify that they are in working order or fit for the purpose. A Buyer is advised to obtain verification from their Solicitor or Surveyor. References to the Tenure of a Property are based on information supplied by the Seller. The Agent has not had sight of the title documents. A Buyer is advised to obtain verification from their Solicitor. You are advised to check the availability of this property before travelling any distance to view. Every effort and precaution has been made to ensure these particulars are correct and not misleading but their accuracy is not guaranteed nor do they form part of any contract. If there is any point which is of particular importance to you, please contact us and we will provide any information you require. This is advisable, particularly if you intend to travel some distance to view the property. The mention of any appliances and services within these details does not imply that they are in full and efficient working order. These particulars are in draft form awaiting Vendors confirmation of their accuracy. These details must therefore be taken as a guide only.