

Holt Street, Eccles

Manchester



£200,000



# Holt Street

Eccles, Manchester

Stylish Two Bedroom, Extended Terraced Property -  
Featuring a Large Garden to the Rear with Decking  
and Paving!

Council Tax band: A

Tenure: Leasehold

- Stylish Two Bedroom Extended Terraced Property
- Lounge and Dining Rooms Separated via an Archway
- Extended Fitted Kitchen
- Two Double Bedrooms
- Spacious Bathroom
- Low-Maintenance Courtyard Garden to the Front
- Generous Garden to the Rear with Paving and Decking
- Close to Transport Links to the Trafford Centre, Salford Quays, Media City and Manchester City Centre
- Located Within Easy Access of Local Schooling, Parks and Amenities
- Ideal First Time Home or Investment



HILLS





**Lounge**

12' 0" x 10' 9" (3.65m x 3.28m)

A well decorated lounge complete with a ceiling light point, double glazed window and wall mounted radiator.

**Kitchen**

18' 1" x 7' 9" (5.50m x 2.37m)

Featuring complementary wall and base units with integral hob, oven and dishwasher. Complete with ceiling spotlights, Velux window and tiled flooring. Doors to the rear.

**Diner**

12' 11" x 10' 9" (3.94m x 3.28m)

Complete with a ceiling light point, double glazed window and wall mounted radiator.

**Landing**

Complete with a ceiling light point and carpet flooring.

**Bedroom One**

8' 6" x 13' 7" (2.59m x 4.13m)

Featuring fitted wardrobes. Complete with a ceiling light point, window to the front and carpet flooring.

**Bedroom Two**

8' 11" x 13' 0" (2.73m x 3.96m)

Complete with a ceiling light point, window to the rear and laminate flooring.

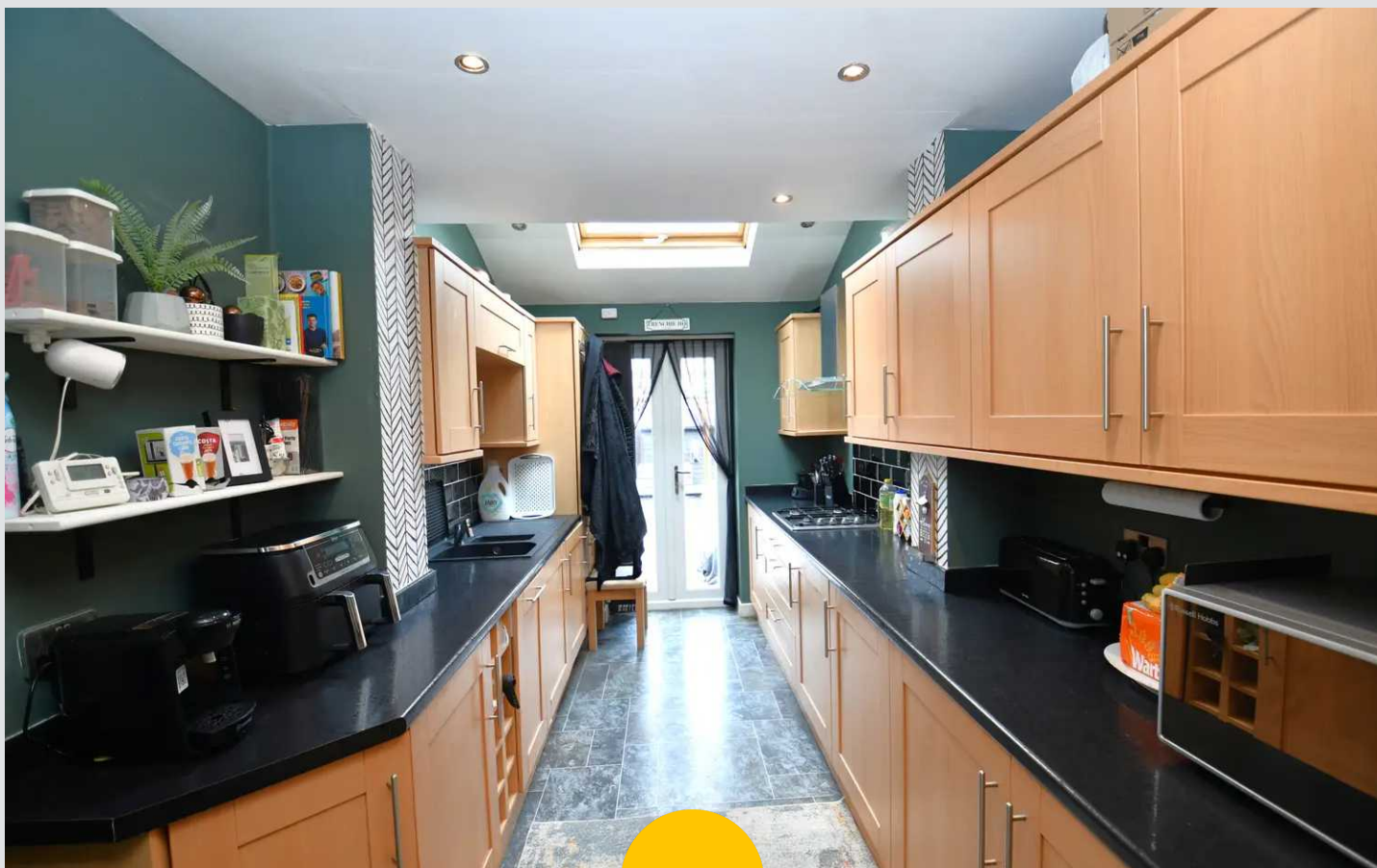
**Bathroom**

8' 10" x 8' 4" (2.69m x 2.55m)

Featuring a four-piece suite including a four-piece suite including a bath, shower cubicle, hand wash basin and W.C. Complete with ceiling spotlights, tiled walls and flooring.

**External**

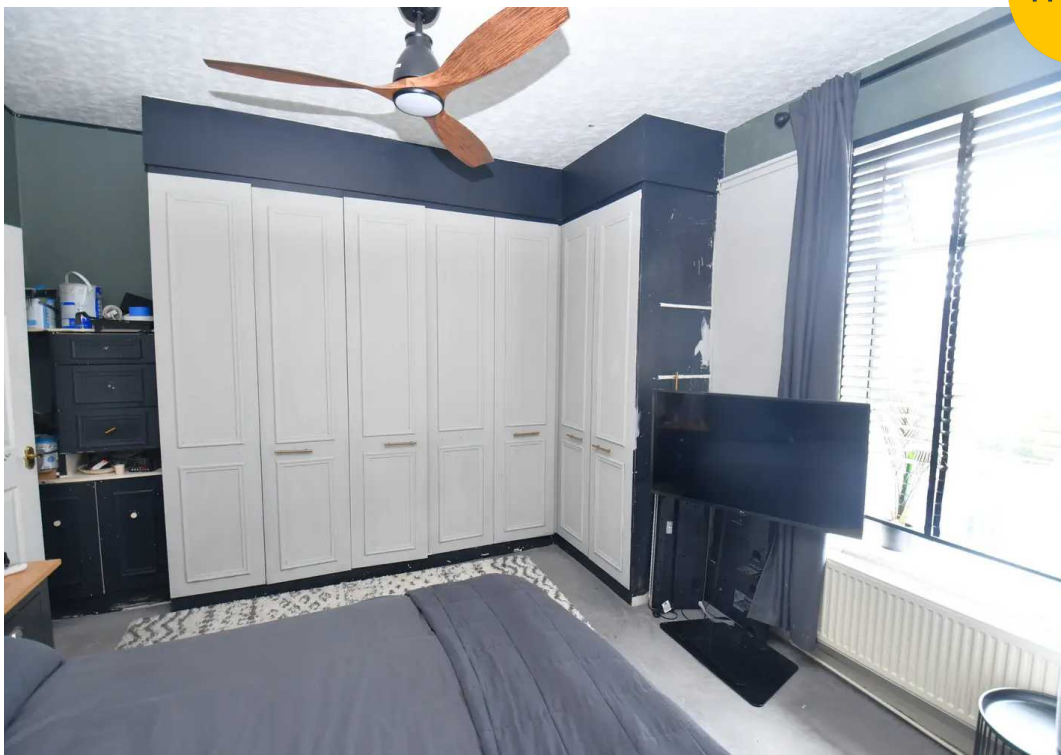
To the rear of the property is a low maintenance garden with a decked seating area and paving.

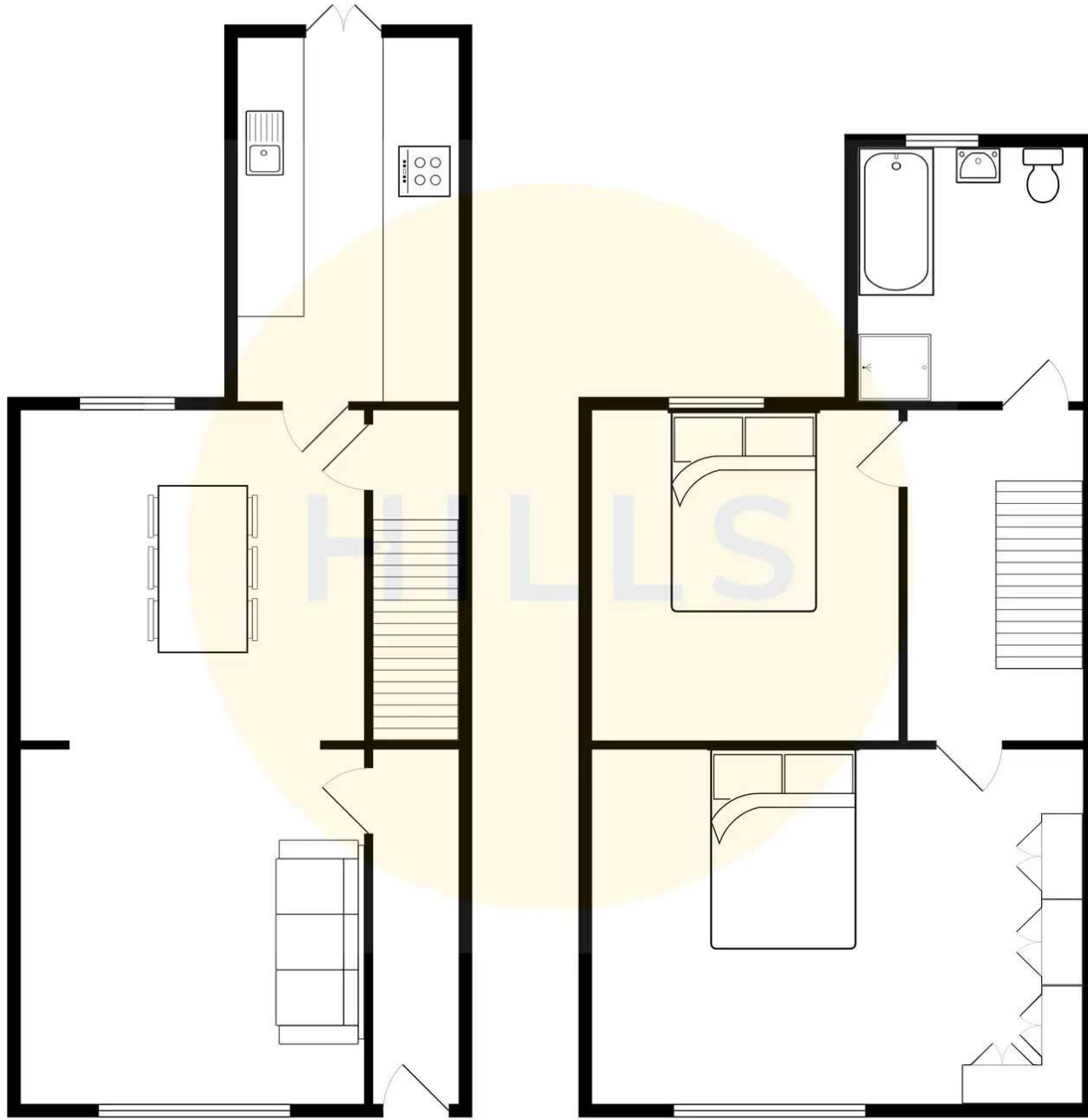




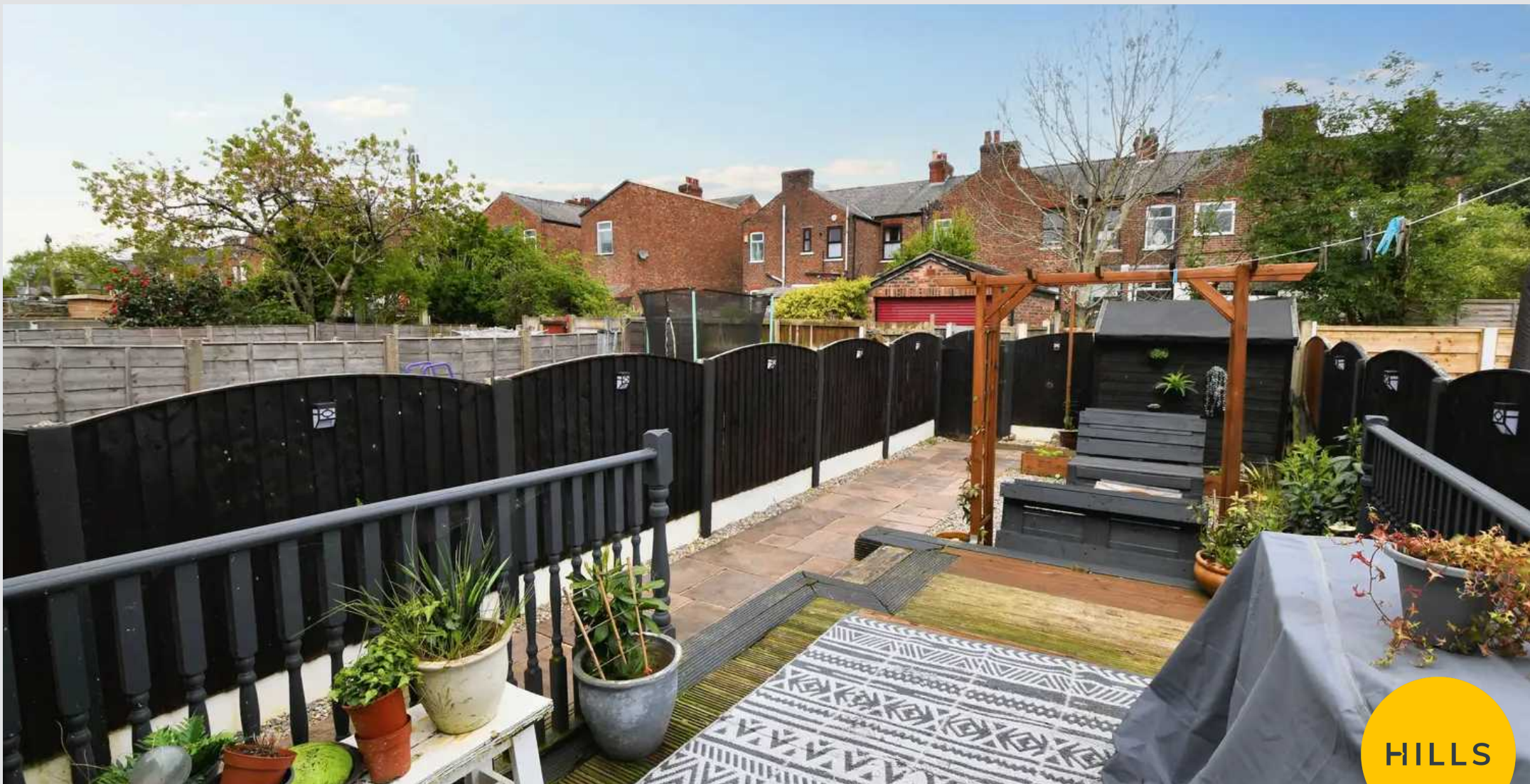


HILLS









## Hills | Salfords Estate Agent

Hills Residential, Sentinel House Albert Street - M30 0SS

0161 707 4900

[sales@hills.agency](mailto:sales@hills.agency)

[www.hills.agency/](http://www.hills.agency/)



THE PROPERTY MISDESCRIPTIONS ACT 1991 The Agent has not tested any apparatus, equipment, fixtures and fittings or services and so cannot verify that they are in working order or fit for the purpose. A Buyer is advised to obtain verification from their Solicitor or Surveyor. References to the Tenure of a Property are based on information supplied by the Seller. The Agent has not had sight of the title documents. A Buyer is advised to obtain verification from their Solicitor. You are advised to check the availability of this property before travelling any distance to view. Every effort and precaution has been made to ensure these particulars are correct and not misleading but their accuracy is not guaranteed nor do they form part of any contract. If there is any point which is of particular importance to you, please contact us and we will provide any information you require. This is advisable, particularly if you intend to travel some distance to view the property. The mention of any appliances and services within these details does not imply that they are in full and efficient working order. These particulars are in draft form awaiting Vendors confirmation of their accuracy. These details must therefore be taken as a guide only.