



Fitzwarren Street, Salford

Salford



£170,000



# Fitzwarren Street

## Salford

Take a look at this three bedroom, bay-fronted terraced property, that is conveniently located within walking distance of Salford Quays and Media City!

Council Tax band: A

Tenure: Freehold

- Three Bedroom, Bay-Fronted Terraced Property
- Located Within Walking Distance of Salford Quays and Media City
- Bay-Fronted Lounge and a Spacious Dining Room
- Fitted Kitchen and a Large, Three-Piece Bathroom
- Low-Maintenance Courtyard Garden to the Rear
- Close to Local Amenities, Schooling and Well-Kept Parks
- Ideal First Time Home or Investment
- Get in Touch to Secure Your Viewing Today!



HILLS



### Entrance Hallway

Complete with a ceiling light point, wall mounted radiator and laminate flooring.

### Lounge

11' 1" x 9' 11" (3.39m x 3.02m)

Complete with a ceiling light point, double glazed bay window and wall mounted radiator. Fitted with laminate flooring.

### Kitchen

10' 1" x 7' 10" (3.07m x 2.38m)

Featuring complementary fitted units with integral fridge freezer, hob and oven. Space for a washer. Complete with a ceiling light point, double glazed window and wall mounted radiator. Fitted with laminate flooring.

### Dining Room

11' 11" x 10' 8" (3.63m x 3.25m)

Complete with a ceiling light point, double glazed window and wall mounted radiator. Fitted with laminate flooring.

### Landing

11' 1" x 9' 11" (3.39m x 3.02m)

Complete with a ceiling light point and carpet flooring.

### Bedroom One

13' 7" x 8' 5" (4.15m x 2.57m)

Complete with a ceiling light point, double glazed window and wall mounted radiator. Fitted with carpet flooring.

### Bedroom Two

11' 0" x 6' 4" (3.36m x 1.94m)

Complete with a ceiling light point, double glazed window and wall mounted radiator. Fitted with carpet flooring.

### Bedroom Three

7' 9" x 6' 2" (2.37m x 1.89m)

Complete with a ceiling light point, double glazed window and wall mounted radiator. Fitted with carpet flooring.

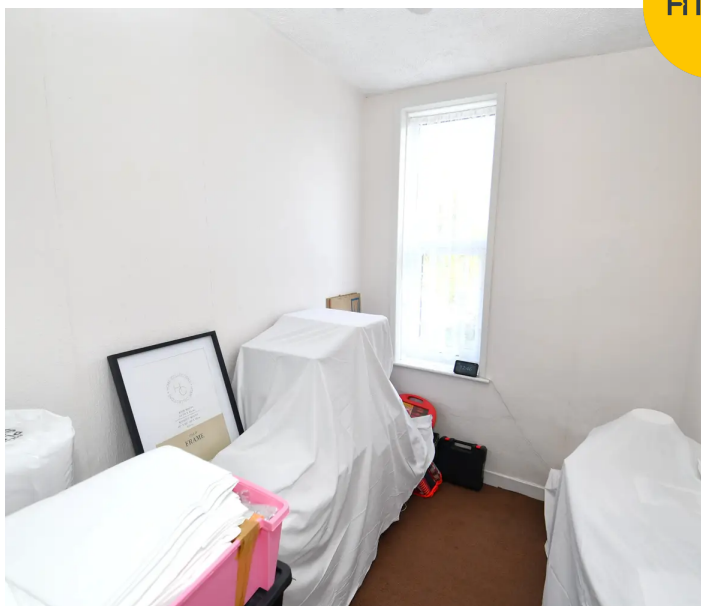
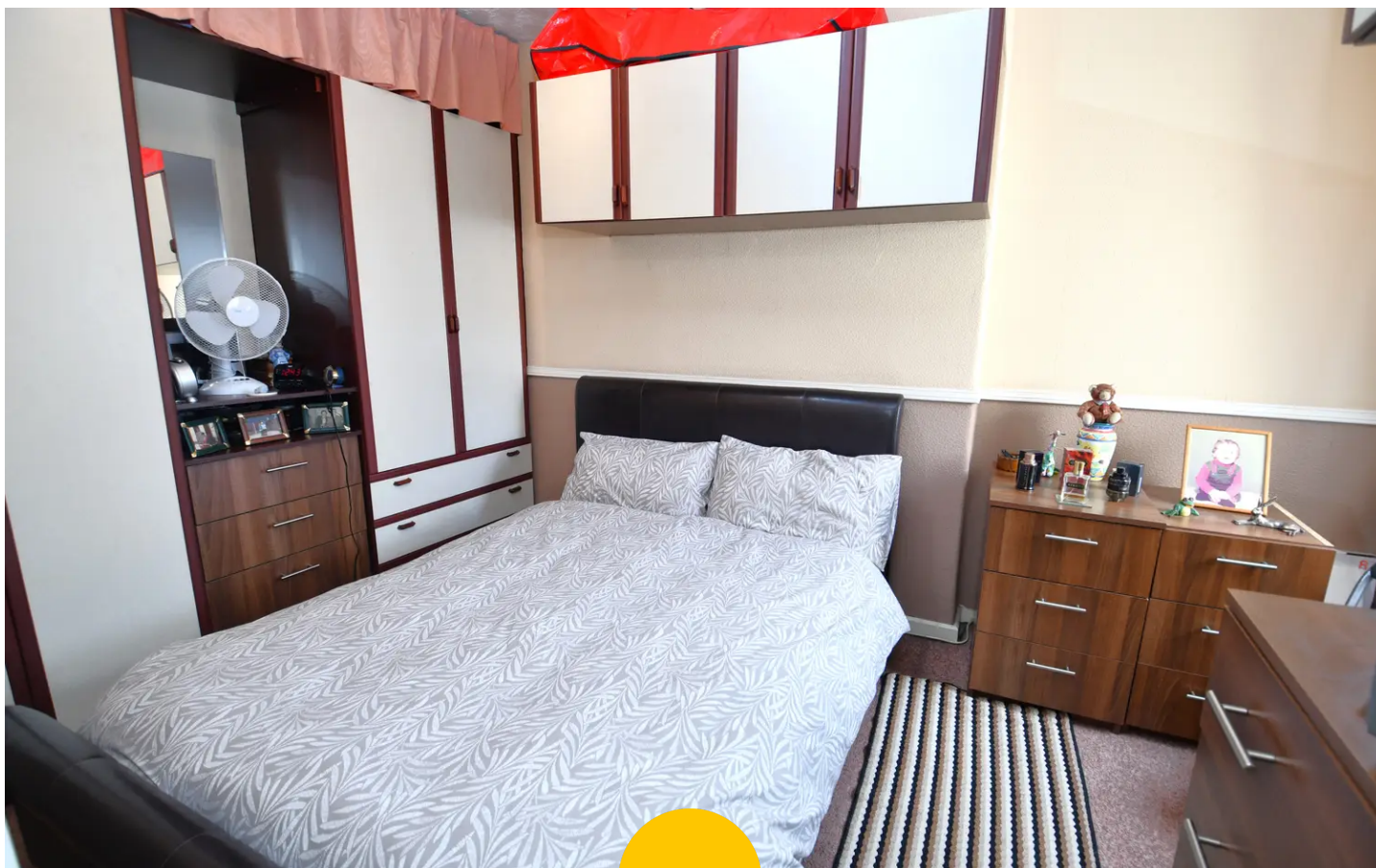




## Bathroom

10' 1" x 7' 9" (3.08m x 2.36m)

Featuring a three-piece suite including a bath with shower over, hand wash basin and W.C. Complete with a ceiling light point, double glazed window and wall mounted radiator. Fitted with ceiling light point, double glazed window and wall mounted radiator. Fitted with laminate flooring.











HILLS

## Hills | Salfords Estate Agent

Hills Residential, Sentinel House Albert Street - M30 0SS

0161 707 4900

[sales@hills.agency](mailto:sales@hills.agency)

[www.hills.agency/](http://www.hills.agency/)



THE PROPERTY MISDESCRIPTIONS ACT 1991 The Agent has not tested any apparatus, equipment, fixtures and fittings or services and so cannot verify that they are in working order or fit for the purpose. A Buyer is advised to obtain verification from their Solicitor or Surveyor. References to the Tenure of a Property are based on information supplied by the Seller. The Agent has not had sight of the title documents. A Buyer is advised to obtain verification from their Solicitor. You are advised to check the availability of this property before travelling any distance to view. Every effort and precaution has been made to ensure these particulars are correct and not misleading but their accuracy is not guaranteed nor do they form part of any contract. If there is any point which is of particular importance to you, please contact us and we will provide any information you require. This is advisable, particularly if you intend to travel some distance to view the property. The mention of any appliances and services within these details does not imply that they are in full and efficient working order. These particulars are in draft form awaiting Vendors confirmation of their accuracy. These details must therefore be taken as a guide only.