



Chantries
& Pewleys



Collingdon Court
Cranleigh



INTRODUCING

2 Collingdon Court

GROVE ROAD, CRANLEIGH
GU6 7LB

Designed by the acclaimed architects Brewer Smith and Brewer in 1973, this striking four bedroom detached home is a bold statement in late mid-century design, seamlessly blending clean architectural lines with modern elegance. Tucked away on a private third-of-an-acre plot in Cranleigh, it has been sensitively renovated to preserve its original character while offering stylish, contemporary living.



4 BEDROOMS



2 RECEPTION ROOMS



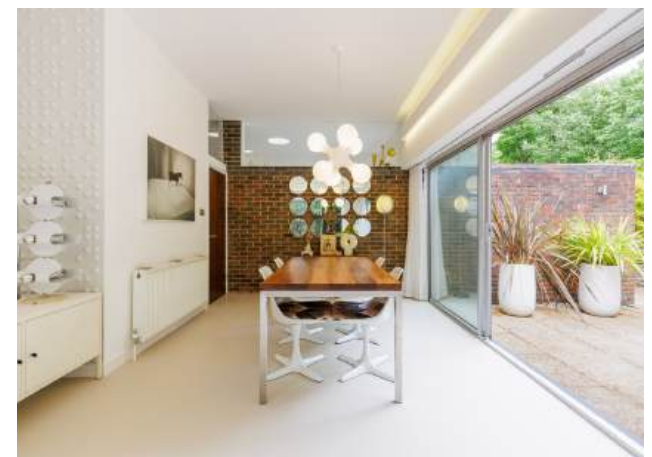
2 BATHROOMS



WORKSHOP & SUMMER HOUSE

Tenure: Freehold
Council Tax Band: G
EPC: D

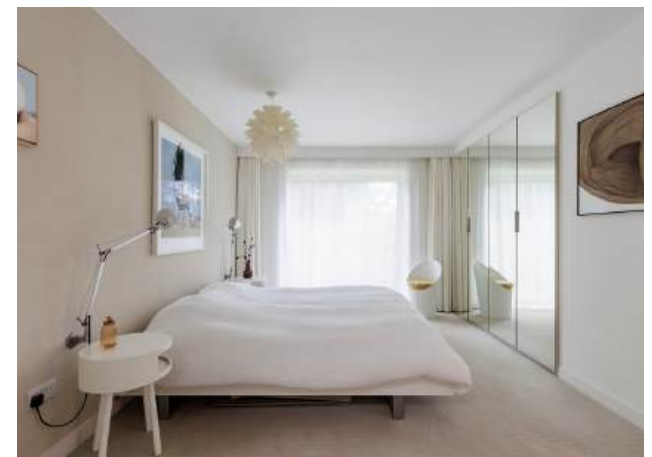














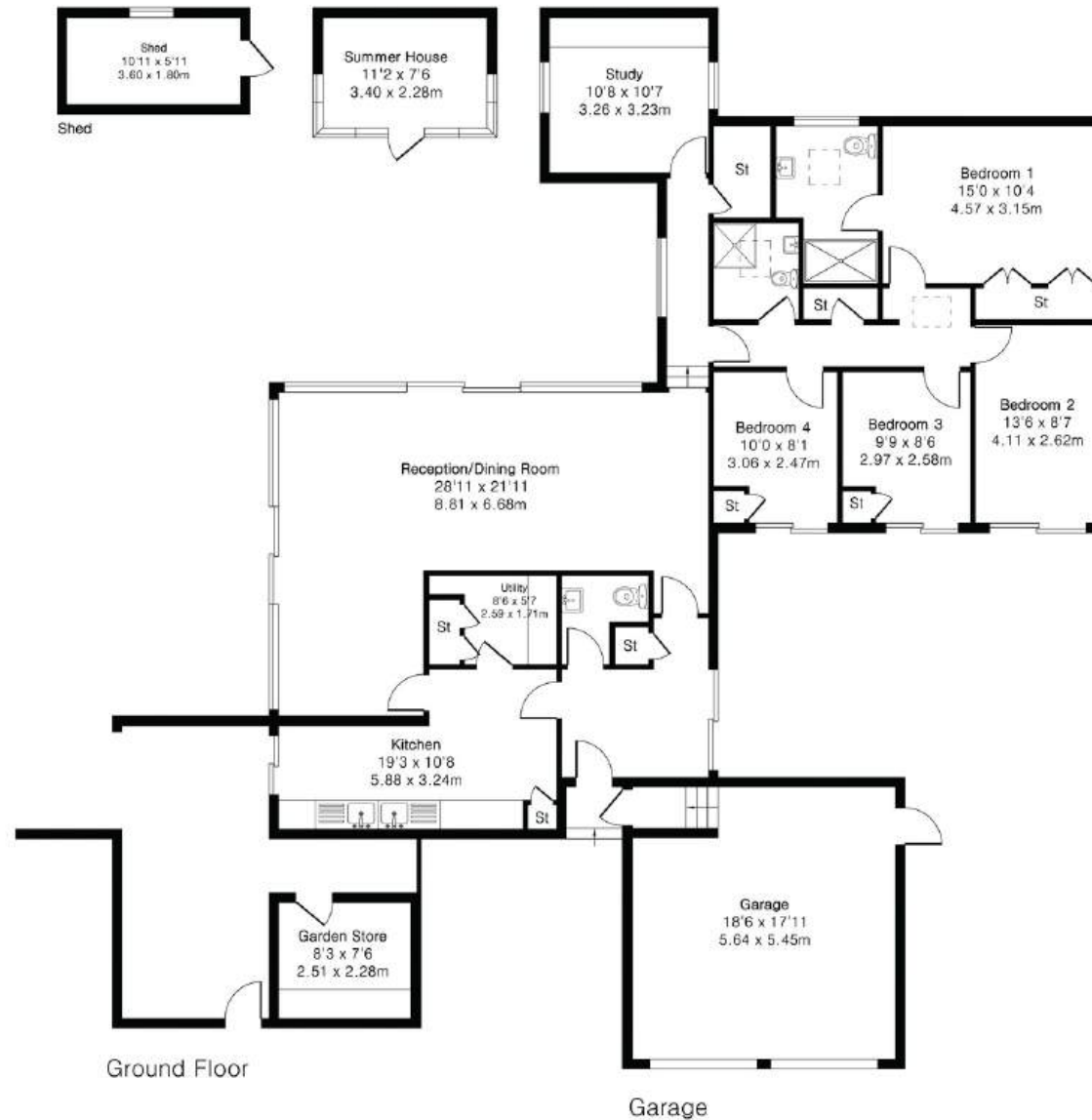


Approximate Gross Internal Area 2263 sq ft - 211 sq m

Ground Floor Area 1708 sq ft – 159 sq m

Garage Area 331 sq ft – 31 sq m

Outbuilding/Shed Area 224 sq ft – 21 sq m





01483 347888

Cranleigh@chantriesandpewleys.com

Brittania House, 133 High Street, Cranleigh, Surrey GU6 8AU