



Chantries
& Pewleys



Sweeters Field
Alfold



INTRODUCING

4 Sweeters Field

ALFOLD, CRANLEIGH, GU6 8UD

A beautifully presented, nearly new home built in 2019 by Cala Homes, occupying a desirable corner plot with ample parking and a superb south-facing garden.

Located in the sought-after village of Alfold, this stylish family home features contemporary finishes throughout, including Amtico flooring and high-quality Roca bathroom suites.

3 BEDROOMS

2 BATHROOMS

KITCHEN/DINING ROOM

GARAGE

Tenure: Freehold

Council Tax Band: E

EPC: C

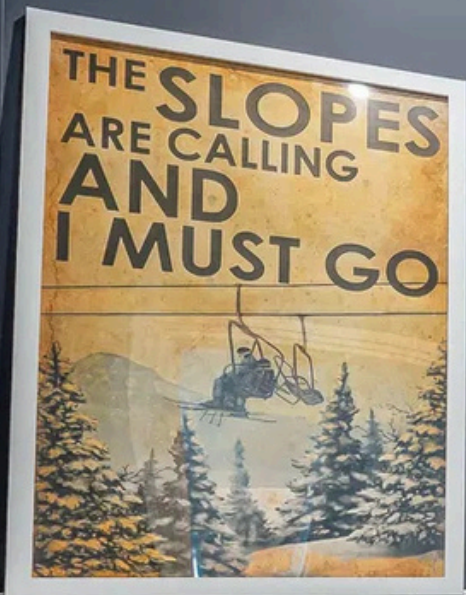


































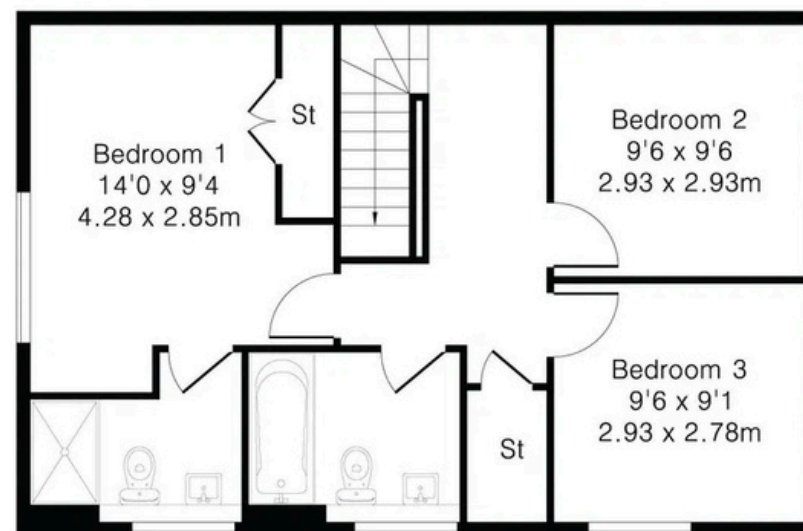
Approximate Gross Internal Area 1337 sq ft - 124 sq m

Ground Floor Area 775 sq ft – 72 sq m

First Floor Area 562 sq ft – 52 sq m



Ground Floor



First Floor



01483 347888

Cranleigh@chantriesandpewleys.com

Brittania House, 133 High Street, Cranleigh, Surrey GU6 8AU