



3 Ormly Avenue, Ramsey, Isle Of Man, IM8 3LF
Asking Price £525,000



- Extended and beautifully modernised 4/5 bedroom dormer bungalow offering just under 2,000 sq ft of flexible, family-friendly accommodation
- Versatile layout including a cosy living room with log burner and bay window, study or fifth bedroom, and generous bedrooms across both floors
- Prime Ormly Avenue location, moments from local amenities yet tucked away to enjoy a peaceful and highly desirable setting
- Sunny rear garden with a lawn, patio area, and a decking space adjoining a summer house with electricity, perfect for entertaining or working from home.
- Stunning 26ft kitchen dining room flooded with natural light, featuring a large rear window, Velux above the island, and ideal space for family living and entertaining



3 Ormly Avenue, Ramsey, Isle Of Man, IM8 3LF

This extended 4/5 bedroom dormer bungalow is situated in the highly sought-after Ormly Avenue, just around the corner from a full range of local amenities yet set far enough back to enjoy a peaceful and private setting. The property has been modernised and meticulously maintained to an excellent standard, offering generous proportions and versatile accommodation of just under 2,000 sq ft.

The welcoming living room is both cosy and stylish, featuring a log burner and an attractive bay window. To the rear, an impressive 26ft kitchen dining space forms the heart of the home and is ideal for modern family living. This bright and airy room benefits from a large window overlooking the garden, along with a Velux window above the central island, flooding the space with natural light. A separate utility room provides further practicality.

The ground floor also offers a study or potential fifth bedroom, depending on requirements, along with two double bedrooms and a contemporary shower room. Upstairs are two further well-proportioned bedrooms, both served by a bathroom on the first floor, making this layout ideal for families or those needing flexible living space.

Externally, the property enjoys a sunny rear garden with a lawn, patio area, and a decking space adjoining a summer house with electricity, perfect for entertaining or working from home. A garage and driveway complete the offering.

With excellent proportions, a desirable location, and versatile accommodation, this is a home that is sure to prove popular.





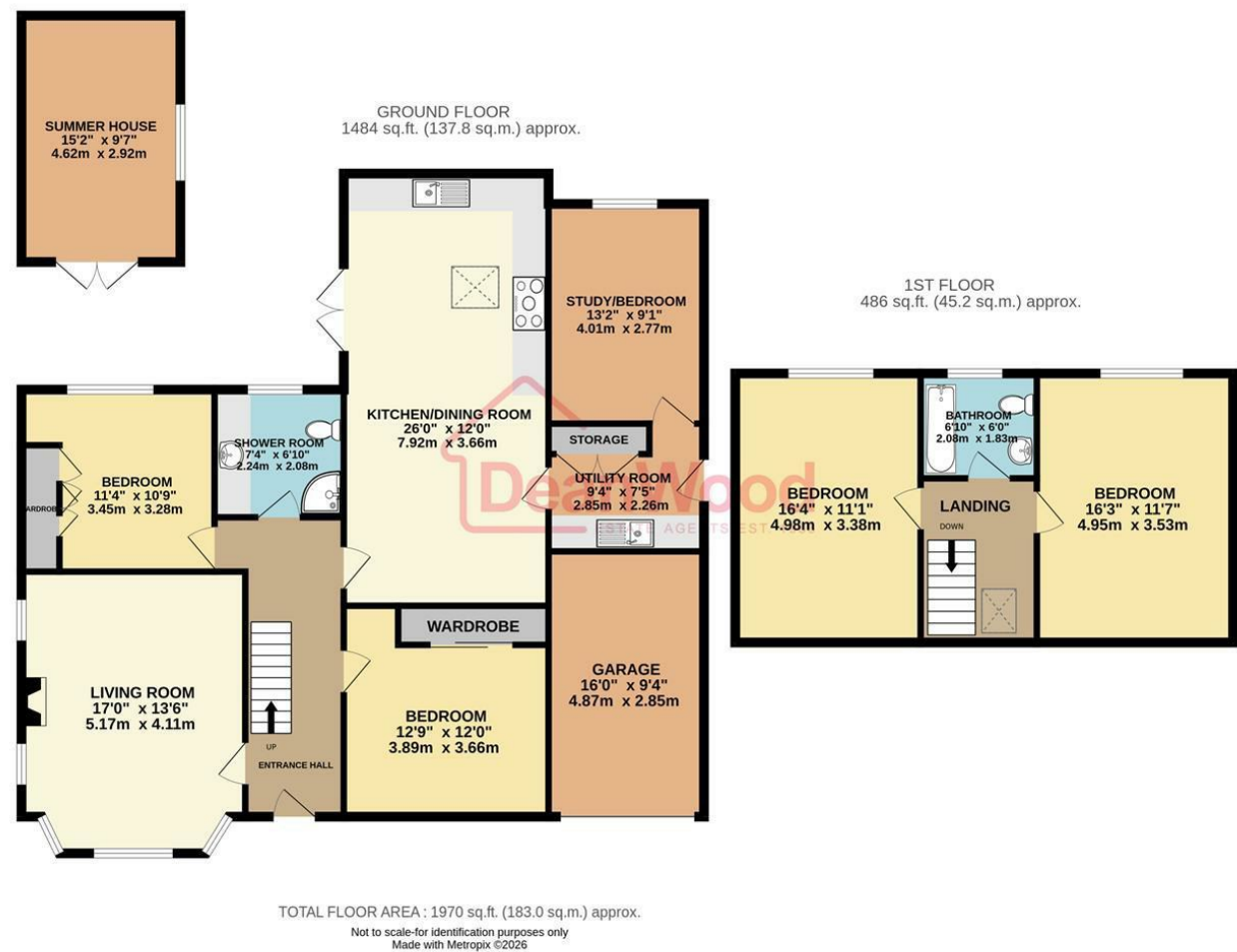












DOUGLAS
37 VICTORIA STREET
DOUGLAS
ISLE OF MAN IM1 2LF
T 01624 620606
F 01624 677363
E info@deanwood.co.im

CASTLETOWN
COMPTON HOUSE
9 CASTLE STREET CASTLETOWN
ISLE OF MAN IM9 1LF
T 01624 825995
F 01624 825996
E castletown@deanwood.co.im

RAMSEY
LEZAYRE HOUSE
87 PARLIAMENT STREET
RAMSEY ISLE OF MAN IM8 1AQ
T 01624 816111
F 01624 816588
E ramsey@deanwood.co.im

These particulars are for information purposes only. They do not constitute or form any contract nor should any statement contained herein be relied upon as a representation of fact. Neither the vendor nor DeanWood Agencies Limited ('the firm'), nor any officer or employee of the firm accept liability or responsibility for any statement contained herein. The vendor does not by these particulars, nor does the firm, nor does any officer or any employee of the firm have any authority to make or give any representation or warranty whatsoever as regards the property or otherwise. It is the sole responsibility of any person interested in the property described in these particulars to make all proper enquiries and searches to verify the description of the property and all other particulars herein.

FOR MORE PROPERTIES VISIT OUR WEBSITE @ **deanwood.im**