



1 St. Mary's Glebe, Port St. Mary, Isle of Man, IM9 5PF
Asking Price £399,950



- Bright, charming true bungalow in desirable Port St Mary
- Three spacious bedrooms and two shower rooms
- Sunny living room flowing into modern fitted kitchen
- Conservatory providing flexible lounge or dining space
- Driveway parking, integral garage
- Private rear garden with patio and mature planting



1 St. Mary's Glebe, Port St. Mary, Isle of Man, IM9 5PF

1 St Mary's Glebe – Bright & Charming True Bungalow in Port St Mary

Move-in ready and full of character, this Mill Baldwin true bungalow offers three spacious bedrooms, bright living areas, and a delightful garden—all just a short walk from coastal paths, shops, and amenities.

The smartly presented exterior boasts a paved driveway for two cars and a tidy lawn. Inside, a welcoming L-shaped hallway leads to a sunny living room with triple windows and a seamless flow into the modern fitted kitchen with breakfast bar.

Two bedrooms open directly to a sun-filled conservatory—ideal as a second lounge or dining space—which also connects to the integral garage and a handy second shower room. A well-appointed main shower room serves the rest of the home.

The private rear garden is a peaceful escape, with a paved patio for outdoor dining, mature shrubs, and colourful planting.

With its versatile layout, natural light, and low-maintenance design, 1 St Mary's Glebe is perfect for downsizers, small families, or anyone seeking single-level living by the sea.







1 St. Mary's Glebe, Port St. Mary, Isle of Man, IM9 5PF

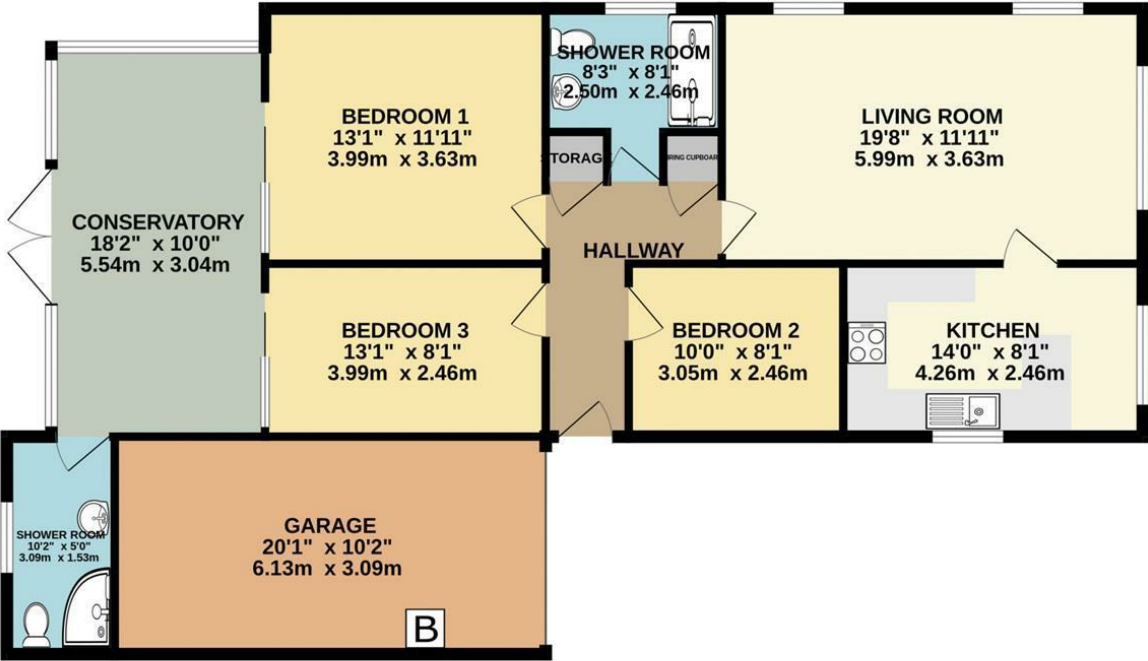








GROUND FLOOR
1255 sq.ft. (116.6 sq.m.) approx.



TOTAL FLOOR AREA : 1255 sq.ft. (116.6 sq.m.) approx.
Not to scale for identification purposes only
Made with Metropix ©2024



DOUGLAS
37 VICTORIA STREET
DOUGLAS
ISLE OF MAN IM1 2LF
T 01624 620606
F 01624 677363
E info@deanwood.co.im

CASTLETOWN
COMPTON HOUSE
9 CASTLE STREET CASTLETOWN
ISLE OF MAN IM9 1LF
T 01624 825995
F 01624 825996
E castletown@deanwood.co.im

RAMSEY
LEZAYRE HOUSE
87 PARLIAMENT STREET
RAMSEY ISLE OF MAN IM8 1AQ
T 01624 816111
F 01624 816588
E ramsey@deanwood.co.im

These particulars are for information purposes only. They do not constitute or form any contract nor should any statement contained herein be relied upon as a representation of fact. Neither the vendor nor DeanWood Agencies Limited ('the firm'), nor any officer or employee of the firm accept liability or responsibility for any statement contained herein. The vendor does not by these particulars, nor does the firm, nor does any officer or any employee of the firm have any authority to make or give any representation or warranty whatsoever as regards the property or otherwise. It is the sole responsibility of any person interested in the property described in these particulars to make all proper enquiries and searches to verify the description of the property and all other particulars herein.

FOR MORE PROPERTIES VISIT OUR WEBSITE @ **deanwood.im**