



Apartment 7, Delamere Apartments 6 Castle Drive., Douglas, Isle Of Man,
IM2 4LX

Asking Price £195,000



- Situated just off Douglas Promenade within easy reach of local amenities, shops, and restaurants.
- Two Double Bedrooms
- Light and airy lounge and dining area with contemporary décor throughout
- Modern kitchen
- Spacious Open Plan Living
- Located within a charming and well-maintained building combining character and modern comfort.



Apartment 7, Delamere Apartments 6 Castle Drive,, Douglas, Isle Of Man, IM2 4LX

Beautifully positioned in a sought-after area of Douglas, this stylish flat offers an exceptional opportunity for those seeking contemporary, low-maintenance living. Combining modern design with comfort, Flat 7 provides an inviting home ideal for professionals, couples, or those looking to downsize without compromise.

Set within an attractive converted property, 6 Castle Drive enjoys a quiet yet convenient position close to the seafront, shops, cafés, and local amenities. The building has been well cared for and retains much of its original charm, with a neatly presented communal entrance leading to the upper floors.

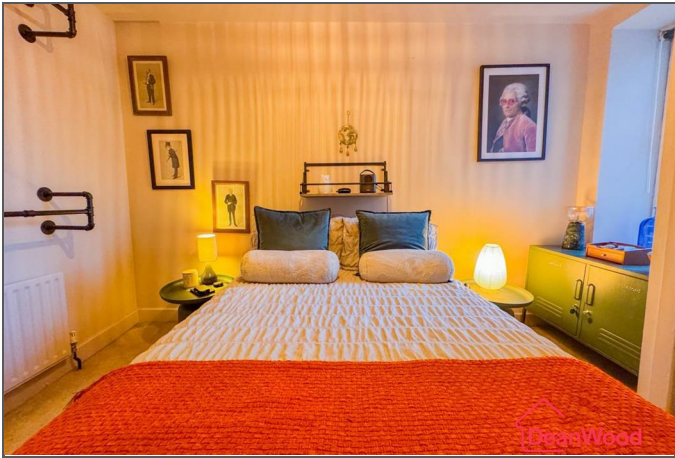
Inside, the flat boasts a bright and spacious open-plan living area, ideal for both relaxing and entertaining. The modern fitted kitchen features sleek cabinetry and integrated appliances.

There are two well-proportioned double bedrooms, both filled with natural light and offering comfortable, versatile living space. The stylish bathroom is finished to a high standard, complete with a bath and shower over, WC, and wash basin.

With its prime location near Douglas promenade, tasteful interiors, and open-plan layout, Flat 7 at 6 Castle Drive perfectly blends period character with modern living — making it an excellent choice for those seeking a beautifully presented home in the heart of Douglas.



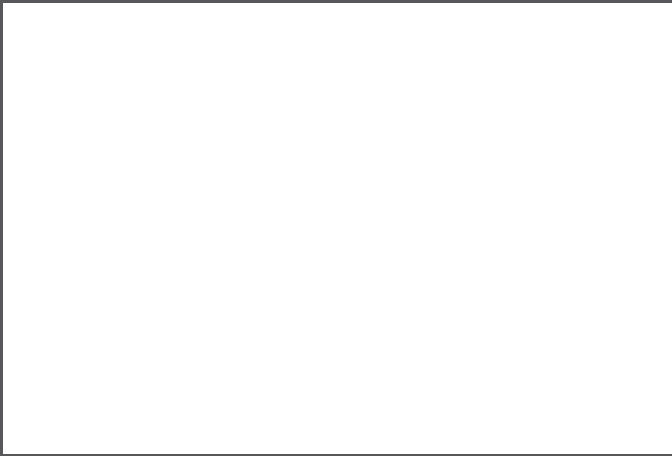






--	--	--





Apartment 7, Delamere Apartments 6 Castle Drive,, Douglas, Isle Of Man, IM2 4LX

GROUND FLOOR
518 sq.ft. (48.2 sq.m.) approx.



TOTAL FLOOR AREA : 518 sq.ft. (48.2 sq.m.) approx.
Not to scale-for identification purposes only
Made with Metropix ©2005



DOUGLAS
37 VICTORIA STREET
DOUGLAS
ISLE OF MAN IM1 2LF
T 01624 620606
F 01624 677363
E info@deanwood.co.im

CASTLETOWN
COMPTON HOUSE
9 CASTLE STREET CASTLETOWN
ISLE OF MAN IM9 1LF
T 01624 825995
F 01624 825996
E castletown@deanwood.co.im

RAMSEY
LEZAYRE HOUSE
87 PARLIAMENT STREET
RAMSEY ISLE OF MAN IM8 1AQ
T 01624 816111
F 01624 816588
E ramsey@deanwood.co.im

These particulars are for information purposes only. They do not constitute or form any contract nor should any statement contained herein be relied upon as a representation of fact. Neither the vendor nor DeanWood Agencies Limited ('the firm'), nor any officer or employee of the firm accept liability or responsibility for any statement contained herein. The vendor does not by these particulars, nor does the firm, nor does any officer or any employee of the firm have any authority to make or give any representation or warranty whatsoever as regards the property or otherwise. It is the sole responsibility of any person interested in the property described in these particulars to make all proper enquiries and searches to verify the description of the property and all other particulars herein.

FOR MORE PROPERTIES VISIT OUR WEBSITE @ deanwood.im