



Laurel Dene Main Road, Sulby, Isle of Man, IM7 2HH
£445,000



- **Impressive, Unique, and Modernised 4 Bedroom Home in Sulby**
- **Stunning Garden: Patio, firepit area, play space, bar with seating, and workshop with electricity.**
- **Versatile Living Spaces: Cosy snug, spacious living/dining area with log burner.**
- **Modern Kitchen & Utility: Generously sized kitchen and handy utility room with pet wash basin.**



Laurel Dene Main Road, Sulby, Isle of Man, IM7 2HH

Impressive, Unique & Modernised 4-Bedroom Home – Sulby

Set in the picturesque village of Sulby, this beautifully updated home offers a perfect balance of modern living and traditional charm. From the moment you enter, the warm, inviting feel reflects the care and attention given to every detail—a true gem combining comfort, style, and practicality.

To the front of the ground floor is a cosy snug, ideal as a fifth bedroom or quiet retreat. The spacious open-plan living and dining area is filled with natural light and features a log burner, making it perfect for family time or relaxed evenings. At the heart of the home, the modern kitchen offers ample workspace and contemporary fittings, ideal for everyday cooking and entertaining. Off the kitchen, a large utility room provides practical space for laundry and includes a pet wash basin. A convenient ground floor WC sits just off the utility, ideal for guests.

Upstairs, three well-proportioned bedrooms share a stylish family bathroom, complete with freestanding bath and walk-in shower. A separate landing leads to the master suite, which includes charming alcoves for wardrobes and a private en suite shower room, offering comfort and privacy.

The standout feature is the beautifully landscaped garden, designed for every occasion. It includes a patio for outdoor dining, a gravelled area for a firepit or BBQ, a lawned section ideal for children, and a dedicated bar area with seating—perfect for entertaining. A powered workshop/shed adds excellent hobby or storage space.

Eco-conscious buyers will appreciate the solar panels, solar charging system, and control hub housed in the spacious attic, enhancing energy efficiency.

This remarkable home offers character, flexibility, and modern touches in a sought-after village setting. Early viewing is highly recommended.





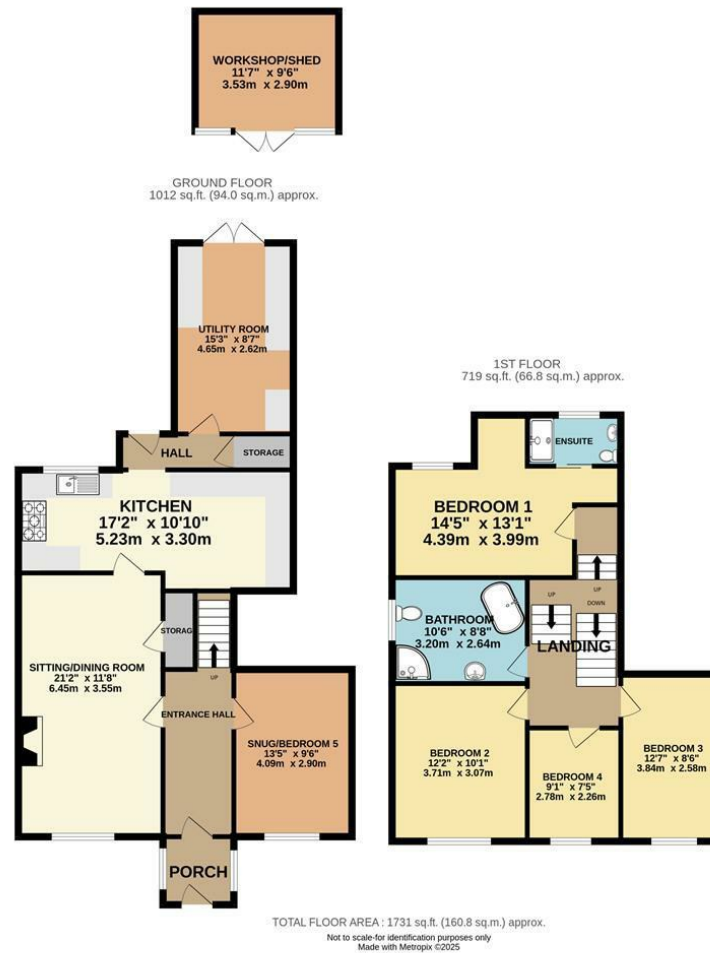












DOUGLAS

37 VICTORIA STREET
DOUGLAS
ISLE OF MAN IM1 2LF

T 01624 620606

F 01624 677363

E info@deanwood.co.im

CASTLETOWN

COMPTON HOUSE
9 CASTLE STREET CASTLETOWN
ISLE OF MAN IM9 1LF

T 01624 825995

F 01624 825996

E castletown@deanwood.co.im

RAMSEY

LEZAYRE HOUSE
87 PARLIAMENT STREET
RAMSEY ISLE OF MAN IM8 1AQ

T 01624 816111

F 01624 816588

E ramsey@deanwood.co.im

These particulars are for information purposes only. They do not constitute or form any contract nor should any statement contained herein be relied upon as a representation of fact. Neither the vendor nor DeanWood Agencies Limited ('the firm'), nor any officer or employee of the firm accept liability or responsibility for any statement contained herein. The vendor does not by these particulars, nor does the firm, nor does any officer or any employee of the firm have any authority to make or give any representation or warranty whatsoever as regards the property or otherwise. It is the sole responsibility of any person interested in the property described in these particulars to make all proper enquiries and searches to verify the description of the property and all other particulars herein.

FOR MORE PROPERTIES VISIT OUR WEBSITE @ deanwood.im