



11A Cranford, Howe Road, Onchan, Isle Of Man, IM3 2BB
Asking Price £925,000



11A Cranford, Howe Road, Onchan, Isle Of Man, IM3 2BB

- **Stunning Sea Views From Front And Rear Sun Terraces**
- **Large Breakfast Kitchen Leading To Utility Room And Sunroom**
- **Spacious Open-Plan Living And Dining Room With French Doors**
- **Double Garage, Ample Driveway, And Beautiful Gardens**
- **Five Generous Bedrooms Including Two With En-Suite Bathrooms**
- **UPVC Double Glazing And Oil-Fired Central Heating Throughout**



11A Cranford, Howe Road, Onchan, Isle Of Man, IM3 2BB

Cranford is a beautifully presented five-bedroom, three-bathroom detached bungalow situated on a generous plot in the highly sought-after location of Howe Road. This impressive home boasts stunning sea views from the sun terrace at the front, perfectly complemented by an open-plan living and dining area, which is filled with natural light thanks to large French doors that open directly onto the terrace.

The spacious breakfast kitchen provides a practical and social hub for the home, seamlessly connecting to a large utility room and a cosy sunroom, perfect for relaxing. A substantial double garage is also accessible from this area, adding convenience and ample storage.

The ground floor layout continues with a well-appointed master bedroom featuring an en-suite shower room, along with two additional double bedrooms and a stylish guest bathroom. Upstairs, two further bedrooms provide excellent versatility, ideal for family or guests. The largest of these benefits from a walk-in wardrobe and a private en-suite bathroom.

Externally, Cranford is equally impressive, with a large, well-maintained front garden and a private rear garden that offers a peaceful outdoor retreat. The property also includes a generous driveway providing ample parking, alongside the double garage. A rear terrace provides additional outdoor space with views back toward the sea.

The property further benefits from uPVC double glazing and oil-fired central heating, ensuring comfort year-round. Cranford is an ideal home for those seeking space, light, and stunning coastal scenery, all within one of the Isle of Man's most desirable residential areas.



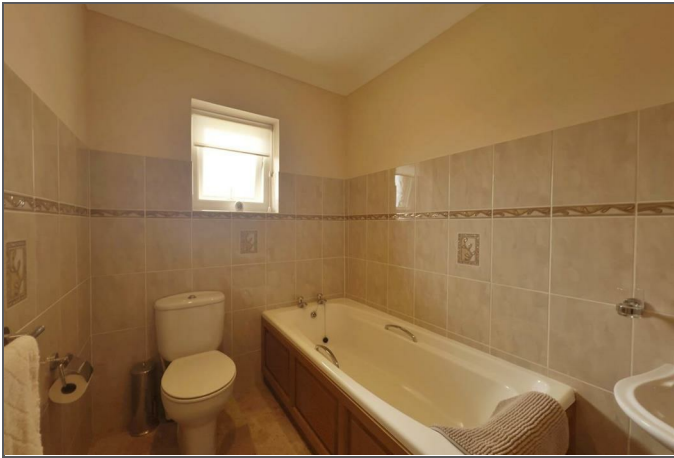








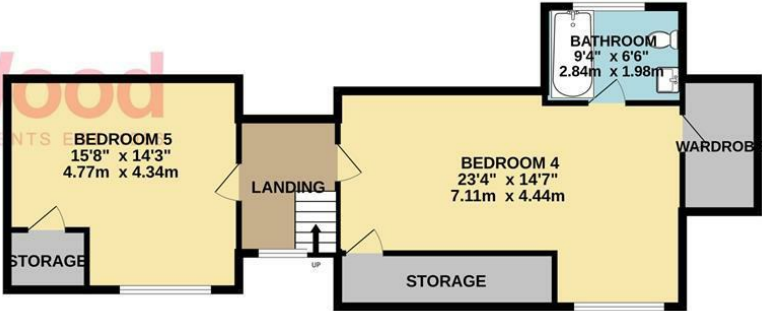






TOTAL FLOOR AREA : 2954 sq.ft. (274.5 sq.m.) approx.
Not to scale-for identification purposes only
Made with Metropix ©2025

1ST FLOOR
722 sq.ft. (67.1 sq.m.) approx.



DOUGLAS
37 VICTORIA STREET
DOUGLAS
ISLE OF MAN IM1 2LF
T 01624 620606
F 01624 677363
E info@deanwood.co.im

CASTLETOWN
COMPTON HOUSE
9 CASTLE STREET CASTLETOWN
ISLE OF MAN IM9 1LF
T 01624 825995
F 01624 825996
E castletown@deanwood.co.im

RAMSEY
LEZAYRE HOUSE
87 PARLIAMENT STREET
RAMSEY ISLE OF MAN IM8 1AQ
T 01624 816111
F 01624 816588
E ramsey@deanwood.co.im

These particulars are for information purposes only. They do not constitute or form any contract nor should any statement contained herein be relied upon as a representation of fact. Neither the vendor nor DeanWood Agencies Limited ('the firm'), nor any officer or employee of the firm accept liability or responsibility for any statement contained herein. The vendor does not by these particulars, nor does the firm, nor does any officer or any employee of the firm have any authority to make or give any representation or warranty whatsoever as regards the property or otherwise. It is the sole responsibility of any person interested in the property described in these particulars to make all proper enquiries and searches to verify the description of the property and all other particulars herein.

FOR MORE PROPERTIES VISIT OUR WEBSITE @ **deanwood.im**