



Marown Manor Main Road, Glen Vine, Isle of Man, IM4 4BQ
Asking Price £1,100,000



- Stunning elevated position with uninterrupted south-facing countryside views
- Detached double garage with spacious first-floor room—ideal as a home office, guest suite, or potential annexe
- Four double bedrooms & four bathrooms, including a luxurious principal suite with balcony and dressing area
- Private, peaceful location in Glen Vine with easy access to schools, amenities, and Douglas
- Three reception rooms, including a garden room and contemporary kitchen with bifold doors to the landscaped garden



Marown Manor Main Road, Glen Vine, Isle of Man, IM4 4BQ

Set in an elevated position with far-reaching countryside views, Marown Manor is an exceptional executive home that blends period character with high-spec modern living. Situated in the sought-after village of Glen Vine, it offers privacy, space, and style in a peaceful yet convenient setting.

Accessed via a sweeping driveway, this substantial detached home features four generous bedrooms and four well-appointed bathrooms. The luxurious principal suite includes a dressing area, en-suite, and a private south-facing balcony—perfect for morning coffee or sunset views. A second bedroom also enjoys its own balcony, ideal for guests or family.

Three bright and characterful reception rooms provide versatile living space, including a garden room with views over the landscaped rear garden. The contemporary kitchen, finished to a high standard, opens into a light-filled sun room—both spaces featuring bifold doors that connect seamlessly to the garden and countryside beyond.

Additional ground floor accommodation includes a practical boot room/cloakroom. Upstairs, two bedrooms benefit from dressing/storage areas, adding flexibility and convenience.

Outside, the south-facing garden enjoys uninterrupted views, offering an idyllic setting for alfresco dining or quiet relaxation. The detached double garage includes a spacious first-floor room—ideal as a home office, guest suite, or potential annexe.

The property also has private access to the heritage railway line, adding a unique and charming feature.

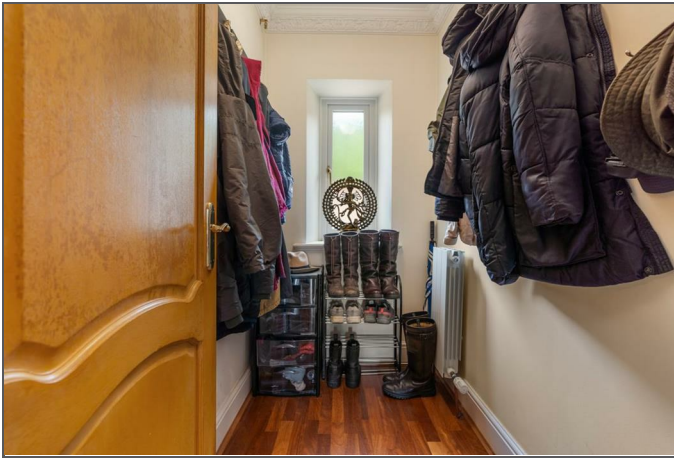
With local schools, amenities, and routes to Douglas nearby, Marown Manor offers a semi-rural lifestyle without compromise.

A rare opportunity to secure a home of character, comfort, and exceptional views.

Early viewing is highly recommended.

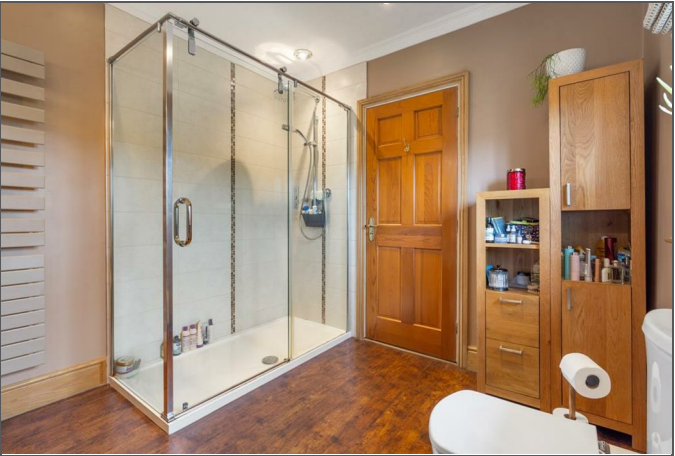






Marown Manor Main Road, Glen Vine, Isle of Man, IM4 4BQ











TOTAL: 3814 sq. ft, 354 m2
FLOOR 1: 2047 sq. ft, 190 m2, FLOOR 2: 1767 sq. ft, 164 m2
EXCLUDED AREAS: GARDEN ROOM: 87 sq. ft, 8 m2, PORCH: 20 sq. ft, 2 m2, PATIO: 121 sq. ft, 11 m2,
CARPORT: 385 sq. ft, 36 m2, BAY WINDOW: 6 sq. ft, 0 m2, FIREPLACE: 19 sq. ft, 1 m2,
BALCONY: 228 sq. ft, 21 m2, STAIRWELL: 37 sq. ft, 3 m2, STORAGE: 22 sq. ft, 2 m2,
LOW CEILING: 74 sq. ft, 7 m2
WALLS: 267 sq. ft, 26 m2

FLOOR PLAN CREATED BY INVISION MEDIA & MARKETING. MEASUREMENTS DEEMED HIGHLY RELIABLE BUT NOT GUARANTEED.



DOUGLAS
37 VICTORIA STREET
DOUGLAS
ISLE OF MAN IM1 2LF
T 01624 620606
F 01624 677363
E info@deanwood.co.im

CASTLETOWN
COMPTON HOUSE
9 CASTLE STREET CASTLETOWN
ISLE OF MAN IM9 1LF
T 01624 825995
F 01624 825996
E castletown@deanwood.co.im

RAMSEY
LEZAYRE HOUSE
87 PARLIAMENT STREET
RAMSEY ISLE OF MAN IM8 1AQ
T 01624 816111
F 01624 816588
E ramsey@deanwood.co.im

These particulars are for information purposes only. They do not constitute or form any contract nor should any statement contained herein be relied upon as a representation of fact. Neither the vendor nor DeanWood Agencies Limited ('the firm'), nor any officer or employee of the firm accept liability or responsibility for any statement contained herein. The vendor does not by these particulars, nor does the firm, nor does any officer or any employee of the firm have any authority to make or give any representation or warranty whatsoever as regards the property or otherwise. It is the sole responsibility of any person interested in the property described in these particulars to make all proper enquiries and searches to verify the description of the property and all other particulars herein.

FOR MORE PROPERTIES VISIT OUR WEBSITE @ **deanwood.im**