



Millfield
Green

Inspired in Bedfordshire



2	Our promise to you
3	Welcome to Millfield Green
5	The local area
7	A taste of village life
9	Amenities and services
11	A net-zero-carbon sustainable retirement village
13	Your new home
15	Interior specification
17	Apartment types
23	Support plans
25	Care and support technology
27	Your peace of mind
28	Next steps
30	Frequently asked questions

Our promise to you

Our ethos is simple. We put the health and happiness of our residents at the heart of everything we do, with the promise of a life less ordinary for today’s generation of retirees.

Everything we do is motivated by the admiration and respect we have for our residents, their families, and the lifestyle they desire and deserve.



Welcome to



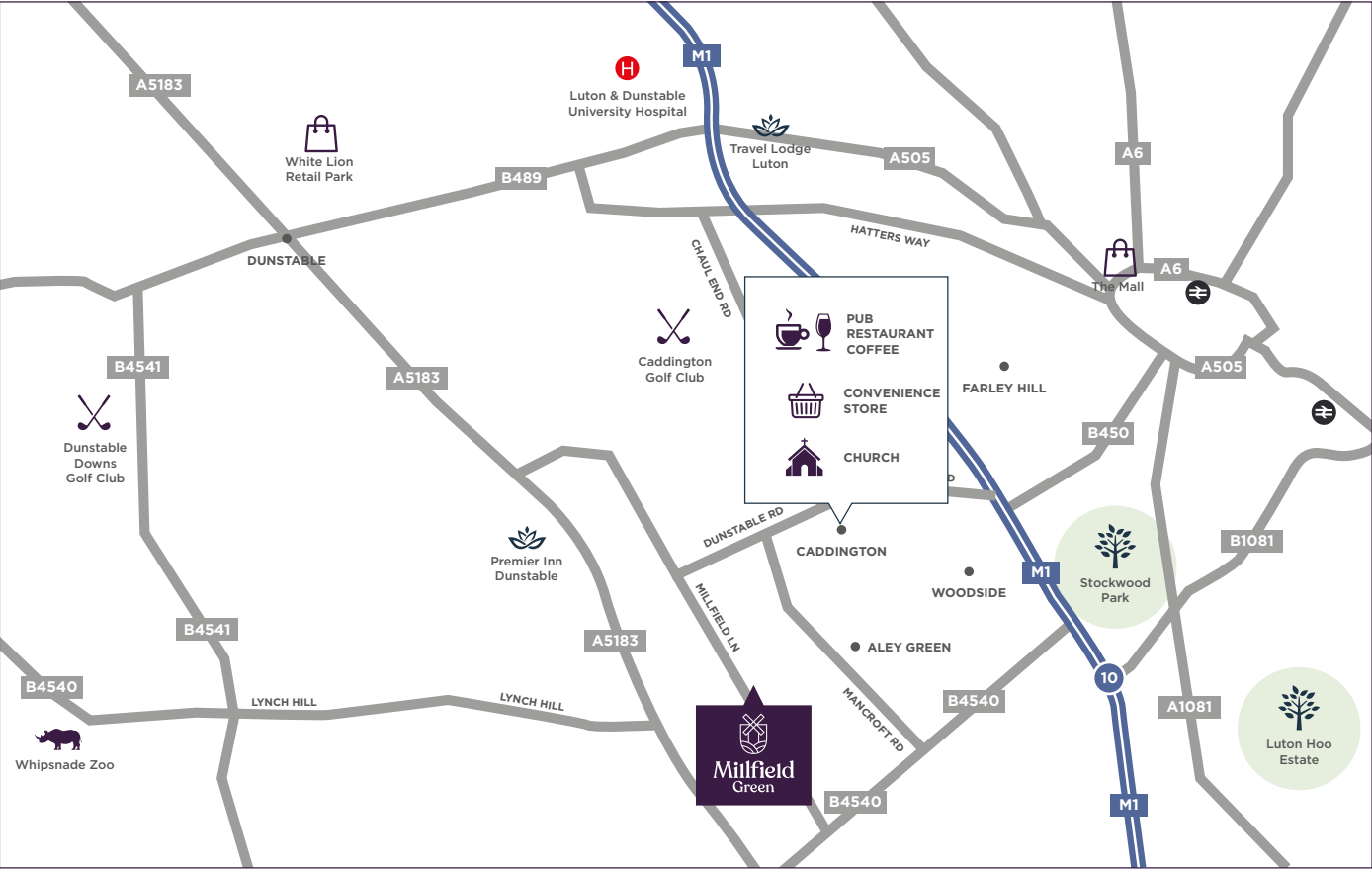
**Millfield
Green**

Inspired in Bedfordshire

Welcome to Millfield Green. We'd like to introduce you to retirement, redefined. Our collection of purpose-built apartments here in the beautiful Bedfordshire countryside will completely change your view of retirement living.

We've built each new home with care, and we're creating a brand-new community just waiting for you to come along, find your perfect place, and embrace the next stage in your extraordinary life.

Find everything within easy reach



Local drive times...

Caddington	2 minutes
Motorway (M1/J10)	8 minutes
Dunstable	8 minutes
Harpenden	12 minutes
Luton Airport	13 minutes
St Albans	24 minutes



Discover a life less ordinary...

The name Millfield Green gives a clue to its idyllic natural setting on Millfield Lane. Around 800 years ago, to the north of the Dunstable Road, stood a landmark windmill. Nearby Caddington village was once the centre of a thriving brick industry, with the fruits of its labour still visible in the collection of fascinating period homes.



Take advantage of the village transport service or enjoy a scenic stroll to the pubs and restaurants in Caddington, where you'll also find a shop, post office, hairdresser, medical centre and pharmacy.

Do a bit of shopping, meet friends for lunch or explore the beautiful Bedfordshire countryside, where rural traditions are proudly upheld. And if you play golf - or have always wanted to learn - you're in luck. There's Caddington Golf Club and Luton Hoo Golf Club just a few miles away, so pack the clubs in the car.



Bridges at Elderswell, Bedfordshire

A taste of village life

The village centre

If you don't feel like cooking, you don't need an excuse to eat out. The Bridges restaurant and bistro will welcome you like an old friend, with imaginative menus using the best and freshest local ingredients - and a wine-list to tempt the most sophisticated of palates - you'll be totally spoilt for choice.

Leisurely living ...

Perhaps you'll pop off travelling several times a year or take a weekend break away. But we can guarantee that whenever you're at home, the first-class leisure facilities at Millfield Green will make you feel as if you're on holiday all the time.

There's a swimming pool, gym, exercise studio, yoga deck and steam rooms, hairdresser and wellness spa. Paint, draw and create in the well-equipped Creations craft room. Or relax in Chapters, a library/cinema room showing the latest blockbusters and sporting fixtures, and a choice of places to eat and drink.

Enjoyment is at the heart of our community, no matter what pace you want to live your life.



Caddington Golf club, Caddington



Library at Great Alne Park, Alcester

Chapters is a great spot to catch up on the papers with a morning coffee. For a leisurely meal there's also Eric's Cafe, a relaxed bar-bistro serving light, nutritious and locally-sourced dishes, tasty snacks, delicious pastries and award-winning coffee. Eric's is a great place to meet neighbours, friends and family and is open to the public too.

The detail

Amenities and services



VILLAGE CENTRE

- Pool
- Steam Room
- Library
- Yoga Deck
- Aromatherapy room
- Gym / Studio
- Bridges Restaurant
- Bar
- Eric's Café
- Hairdressers
- Transport services
- Support services
- Housekeeping services

OUTSIDE SPACE

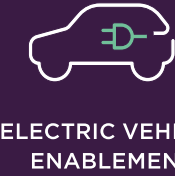
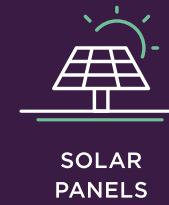
- Landscaped grounds, gardens and walks
- Terraced areas
- External kitchen / BBQ
- Car parking spaces
(with provision for electric charging)
- Secure cycle storage
- 24 hour CCTV
- All apartments benefit from a ground floor terrace or balcony
- Countryside views
- Central shared courtyard / Sun terrace
- Countryside walks

A low-carbon sustainable retirement village

Millfield Green will contain up to 200 units. There are 86 apartments in phase 1 with property prices starting from £341,000. The subsequent phases will also contain a mix of apartments, bungalows and cottages.

The best legacy we can leave is a healthy planet. At Millfield Green we're committed to raising the bar when it comes to reducing our carbon footprint and making the world a more sustainable place.

- All buildings are designed with excellent insulation, ventilation and high-performance double-glazed windows. This will help to save energy and reduce heat loss.
- Each apartment has its own ground source heat pump.
- Solar panels use the natural power of the sun for energy.
- Our energy is sourced only from clean energy providers.
- We're enabling electric car charging points.



Your new home

Contemporary open-plan interiors make the most of natural light with full-height doors opening to a balcony or terrace. Each apartment comes decorated with a neutral palette, after that it's up to you to finesse a look that reflects your personal taste.

You'll love having your friends and family round. Whether it's a special occasion like a birthday or just a cup of tea and a catch-up, the elegant proportions of your new living room mean there's room for everyone.



Kitchen at Great Alne Park, Warwickshire

Interior specification



YOUR KITCHEN

- High-quality fitted units and work surfaces throughout
- Glass splash backs to hob
- Soft-close doors and drawers
- Fan-assisted oven
- Side hung microwave
- Safe induction hob
- Dishwasher
- Integrated washer-dryer
- Eye-level fridge with freezer
- Karndean woodstrip flooring

YOUR BATHROOM

- Walk-in showers fitted to all bathrooms
- Fully integrated bathroom cabinets
- Ceramic tiles to full height in bath and shower areas
- Chrome towel rail
- Ceramic wash basins
- Glass shower screens with chrome shower controls

YOUR BEDROOM

- Fitted or walk-in wardrobes
- Telephone socket
- Sky / TV sockets

YOUR LIVING ROOM

- Telephone and broadband internet socket
- Sky / TV sockets

SECURITY

- Full 24 hour, movement activated village CCTV
- Landscape and security lighting to all communal areas, activated by time and movement
- Personal mobile door handset entry system
- 24-hour emergency call system to off-site support team
- Village TV information channel

INTERNAL FINISH

- Smooth ceilings and walls throughout, finished in emulsion paint.

Apartment types

Phase 1 properties

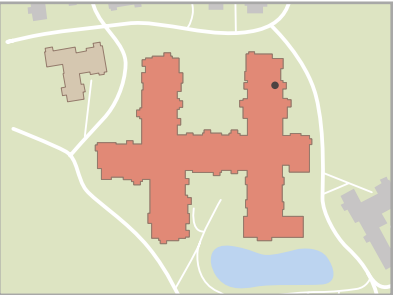
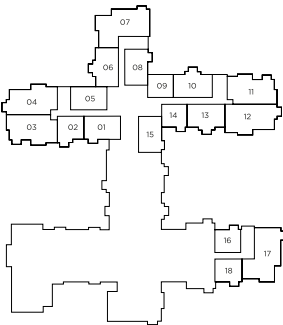


39 Burchmore House

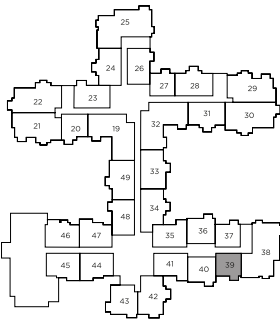
Plot 39 | Village Centre Apartment
1 Bedroom | 571 sq ft | First floor



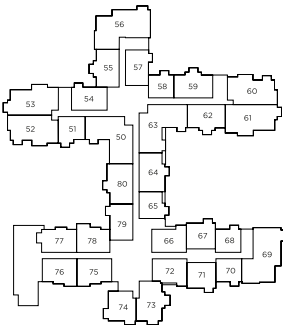
Ground floor



First floor



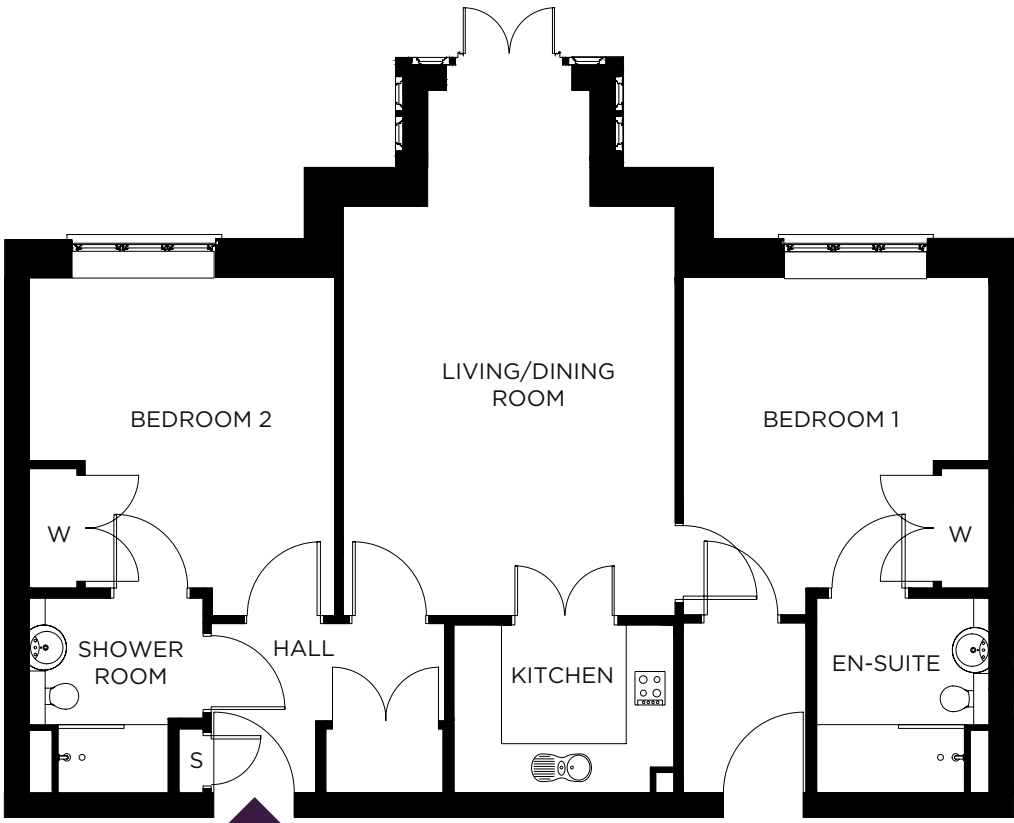
Second floor



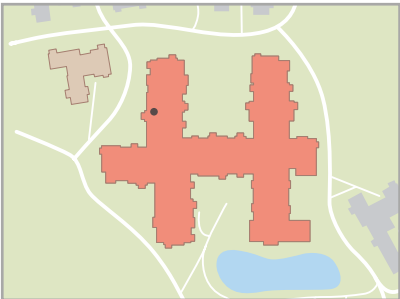
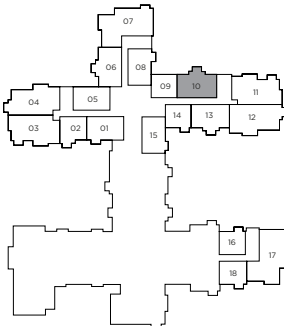
Living/dining room	14' 0" x 13' 10"	4.28m x 4.21m
Kitchen	9' 1" x 6' 11"	2.78m x 2.10m
Bedroom	14' 0" x 12' 7"	4.28m x 3.85m
Shower room	8' 0" x 7' 2"	2.43m x 2.19m

10 Burchmore House

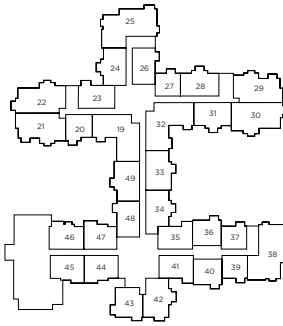
Plot 10 | Village Centre Apartment
2-Bedrooms | 920 sq ft | Ground floor



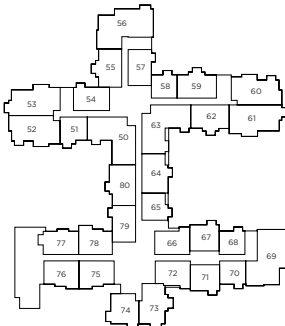
Ground floor



First floor



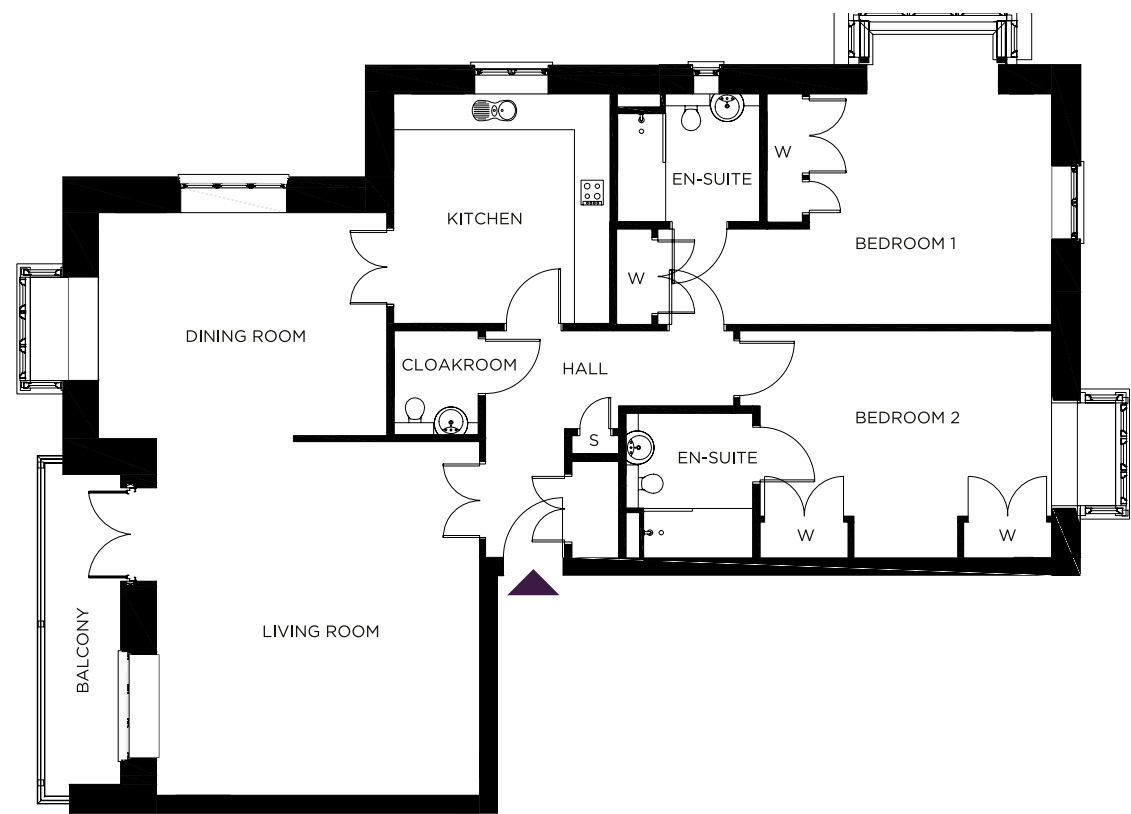
Second floor



Living/dining room	21' 9" x 13' 9"	6.63m x 4.19m
Kitchen	9' 1" x 6' 11"	2.78m x 2.12m
Bedroom 1	14' 0" x 12' 8"	4.26m x 3.85m
En-suite	8' 0" x 7' 2"	2.45m x 2.19m
Bedroom 2	14' 0" x 12' 8"	4.26m x 3.86m
Shower room	8' 1" x 7' 1"	2.45m x 2.16m

25 Burchmore House

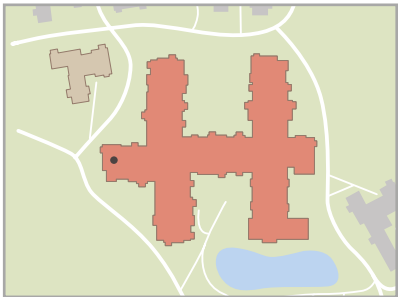
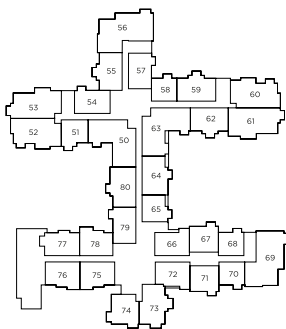
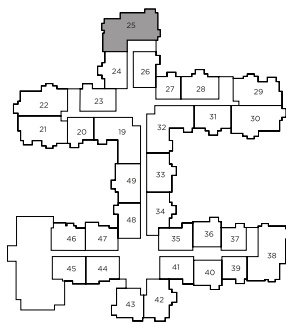
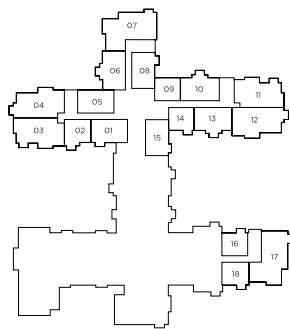
Plot 25 | Panorama Apartment
2-Bedrooms | 1,513 sq ft | First floor



Ground floor

First floor

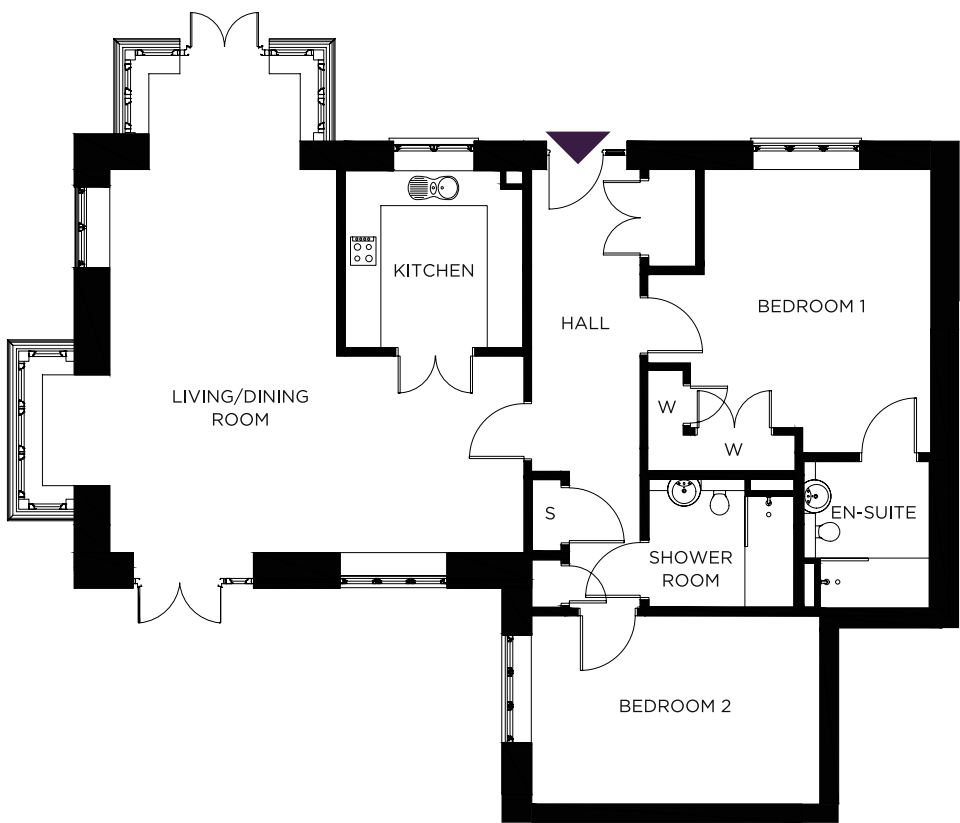
Second floor



Living/dining room	32' 7" x 18' 1"	9.93m x 5.51m
Kitchen	12' 10" x 12' 1"	3.90m x 3.68m
Bedroom 1	24' 4" x 12' 11"	7.42m x 3.93m
En-suite 1	7' 11" x 7' 1"	2.42m x 2.16m
Bedroom 2	17' 5" x 12' 8"	5.31m x 3.86m
En-suite 2	8' 0" x 7' 1"	2.43m x 2.16m

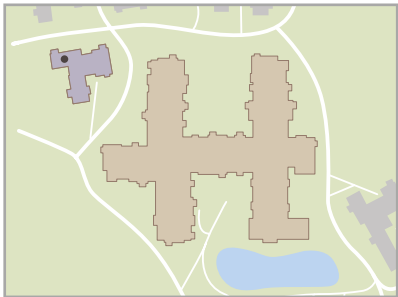
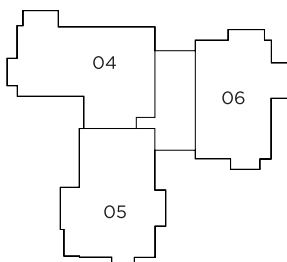
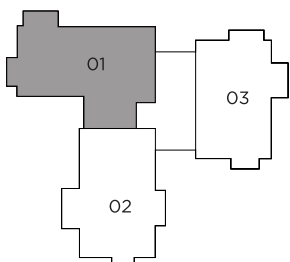
1 Skylark Vale

Plot 81 | The Darwin
2-Bedrooms | 1,271 sq ft | Ground floor



Ground floor

First floor



Living/dining room	26' 9" x 26' 6"	8.14m x 8.09m
Kitchen	9' 10" x 9' 10"	3.00m x 2.99m
Bedroom 1	16' 8" x 15' 8"	5.09m x 4.79m
En-suite	8' 0" x 7' 1"	2.45m x 2.16m
Bedroom 2	16' 0" x 10' 5"	4.87m x 3.18m
Shower room	8' 1" x 7' 0"	2.47m x 2.12m

Help if you want it



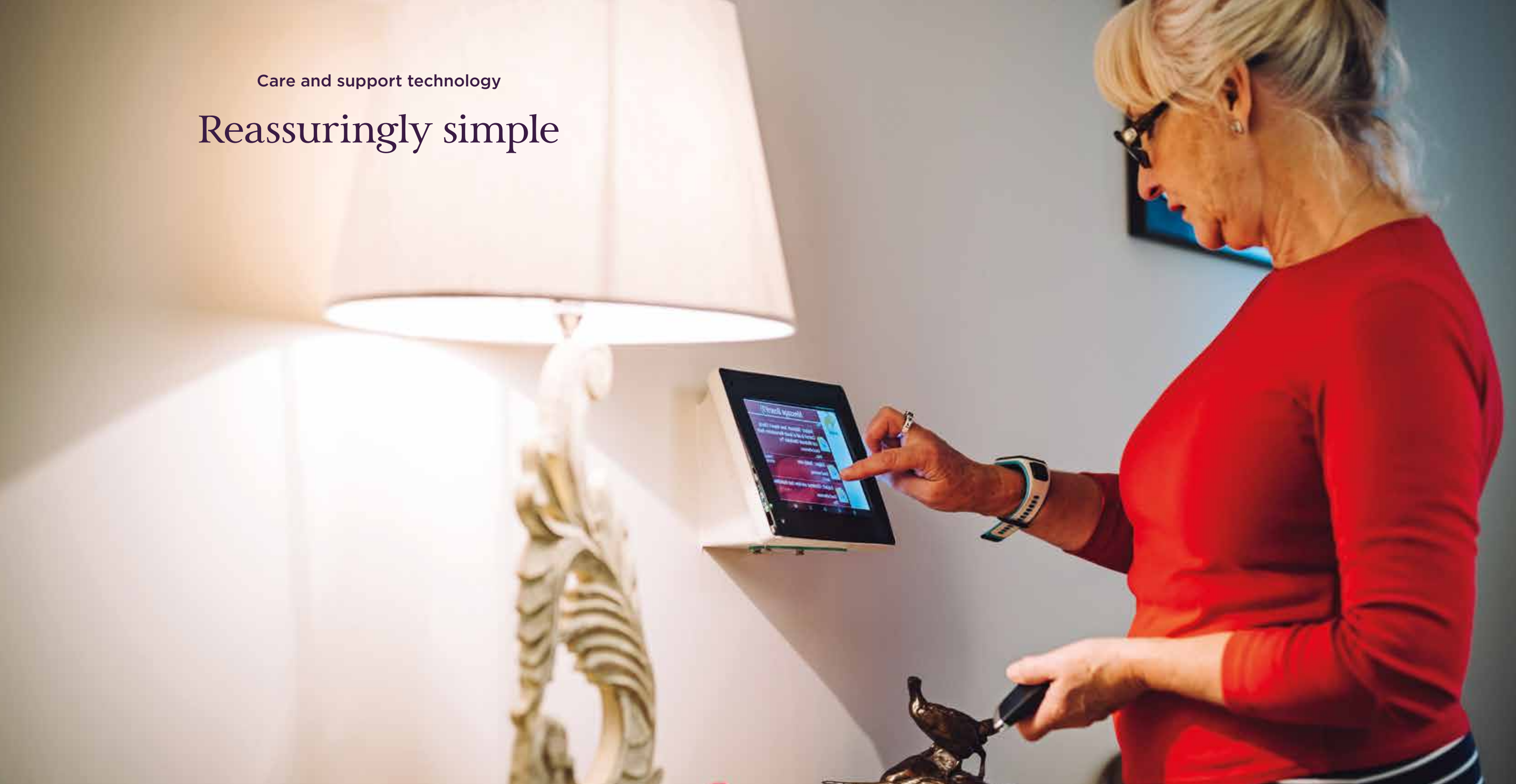
Improving your health and independence...

We want you to be in optimum health so that you can enjoy every moment at Millfield Green. If you need a little extra help with everyday things or are concerned about any aspect of your wellbeing, we'll arrange a meeting with a preferred home care provider (or provider of your choice), who will devise a personalised care plan with you that puts you in control. Please note that this is a private arrangement between you and the home care provider.

Giving you complete choice,
control and reassurance.

Care and support technology

Reassuringly simple



Connections count for everything...

Your independence comes first at Millfield Green, but it's always good to know that a friendly person is ready to offer help and support should you need it. We've installed an ultra-reliable electronic tablet in every apartment, so you can contact a team member whenever you have a concern.

“I love the modern technology, and it's really easy to use. I don't even notice it most of the time, but it's very reassuring to have”

Inspired Villages resident

Your peace of mind

Because life shouldn't be complicated

MOVING

We want you to enjoy your move, so we offer all the advice you need when you sell your property - we'll even help you declutter and settle into your exciting new apartment.

MAINTENANCE

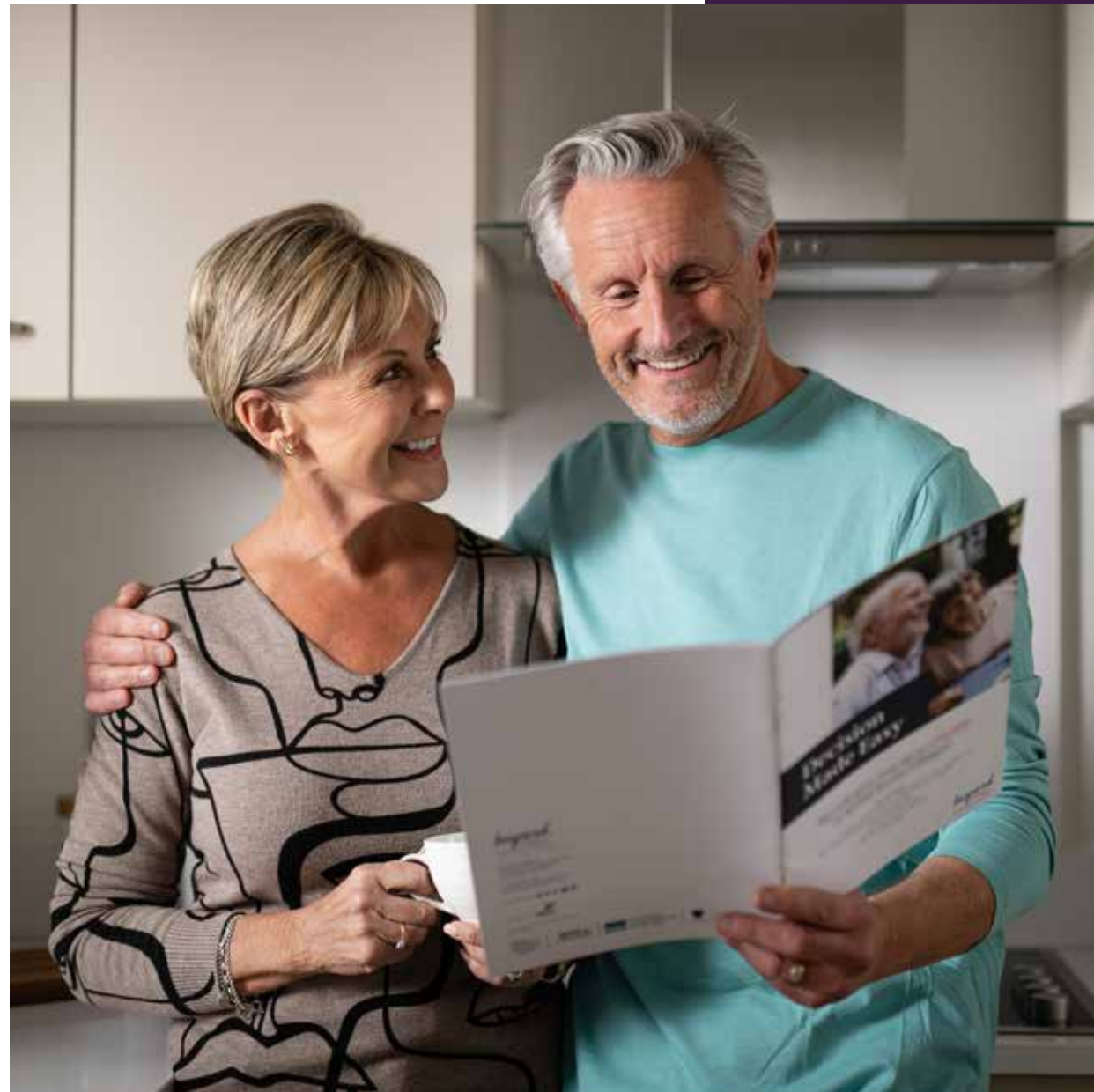
A management company looks after the village and maintains all support services.

ACCESSIBILITY

Whether you choose a garden-level, first or second-floor home, every care is taken to make things as easy as possible for you as your needs evolve.

TECHNOLOGY

Each property has its own electronic tablet-style device to help with communication, ensuring easy contact with our friendly and efficient on-site team.



Next steps

STEP 1 - YOU'VE DECIDED

You've done your research and made up your mind. It's time to move forward and get ready for your next chapter in life.

STEP 2 - VISIT US

We'd love for you to come and see us and explore everything Millfield Green has to offer - we'll be there to meet you.

STEP 3 - ASK AWAY

Our team can answer all the questions you have, big or small. We will give you every confidence in taking your next step.

STEP 4 - TAKE TIME

Moving home is a major decision, and we would never rush or pressurise you. We'll treat you with respect from the moment we meet.

STEP 5 - NO HASSLE

We're on hand to help you plan your move and we'll help you settle into your beautiful new home at Millfield Green.

STEP 6 - ENJOY YOUR NEW HOME

Every little thing is taken care of, so there's no need for you to worry. Just relax and make yourself totally at home.



Millfield Green

Frequently asked questions

WHO MANAGES THE VILLAGE?

Inspired Villages provides daily on-site management to the village through management companies in each location, all of which are overseen by our head office team. Management companies include a village manager, head of maintenance, and all other team members required to provide the services and maintain the facilities.

WHAT SECURITY MEASURES ARE IN PLACE?

For full peace of mind, measures will be introduced to provide security through both fencing and landscape treatment, controlled access points, 24-hour CCTV and a range of management security policies and procedures. The careful layout and arrangement of the village ensures people feel safe and secure, and the 'public' spaces will have a high level of staff and occupier surveillance.

IS THERE ANY MEDICAL COVER?

Inspired Villages ensures that first-aid trained team members are on site at all hours. Whilst we do not provide regulated activity medical cover, our team is trained to assist residents with sourcing the care and support they may need through 3rd parties. In addition, all properties benefit from access to a monitored support line, 24 hours a day.

CAN FRIENDS/FAMILY COME TO STAY WITH ME?

Yes of course, your Inspired apartment is your home. Our village facilities are available for them to use. Please note that you cannot sub-let your apartment.

CAN I BRING A PET?

Yes, Inspired Villages are pet friendly places. However, we respect communal areas where pets are not permitted such as the Chapters library, The Dining Room, and craft room.

IS THERE A MINIMUM AGE RESTRICTION FOR RESIDENTS?

A minimum age of 65 applies. If you are part of a couple, then only one of you needs to meet the minimum age. And despite the name suggestion, you don't actually need to be retired to live in an Inspired village.







Millfield Green

Inspired in Bedfordshire

www.millfieldgreen.co.uk

T: 01582 787 360

E: sales.millfieldgreen@inspiredvillages.co.uk

Stanhope Way, Caddington, LU1 4AR

Follow us on     



The company is Senior Living (Caddington) Limited

Registered office: Unit 3, Edwalton Business Park, Landmere Lane, Edwalton, Nottingham, NG12 4JL

Registered in England and Wales. Company Number: 11621434

