

Austin Heath

Inspired in Warwick

11 GALLAGHER COURT

1 BEDROOM SECOND FLOOR APARTMENT

£180,000 (75%)



Key features

- Spacious double bedroom with double wardrobes
- Under floor heating through-out
- Well equipped kitchen
- Lift access to first floor
- Luxury Retirement Village
- Wellness centre, spa pool, bistro, beauty salon, craft room, cinema library
- Active, supportive Community with Village transport
- 75% Shared Ownership
- Personalised care in your home if required

Austin Heath

Inspired in Warwick



Austin Heath

Inspired in Warwick



Austin Heath

Inspired in Warwick



Austin Heath

Inspired in Warwick

Tenure: Leasehold

Austin Heath is a vibrant retirement community, set in a superb inclusive style and built and managed by industry experts. Each property benefits from a combination of thoughtful design and proud craftsmanship. It is within a short distance of the village centre, with its wellness centre, spa, bistro, deli-shop, beauty salon, garden room and library - all the essentials required for inspired later living.

The village has been carefully designed to allow independent living, close to the wider community, with the peace of mind that comes from an immediate supportive neighbourhood and an expert team, should you require it, to provide personalised care in the comfort and privacy of your home with 24-hour emergency call system.

The Interior

Featuring only the best fixtures, including a stylish, well- equipped kitchen and luxurious, carefully designed bathrooms. Fully decorated throughout, it is ready to move into.

It's considered design combines practicality and style to make life easier - the walk-in shower in the master en-suite for instance.

Location

Just a short distance from Warwick's famous castle, Austin Heath is the ideal base for enjoying the town's historic architecture and amenities. With the village concierge service, it's never too much trouble.

Whether you're soaking in the history of Royal Leamington Spa's natural saline springs or indulging in a Michelin Star evening in nearby Kenilworth, at Austin Heath you're never far from the rich and inspiring local culture.

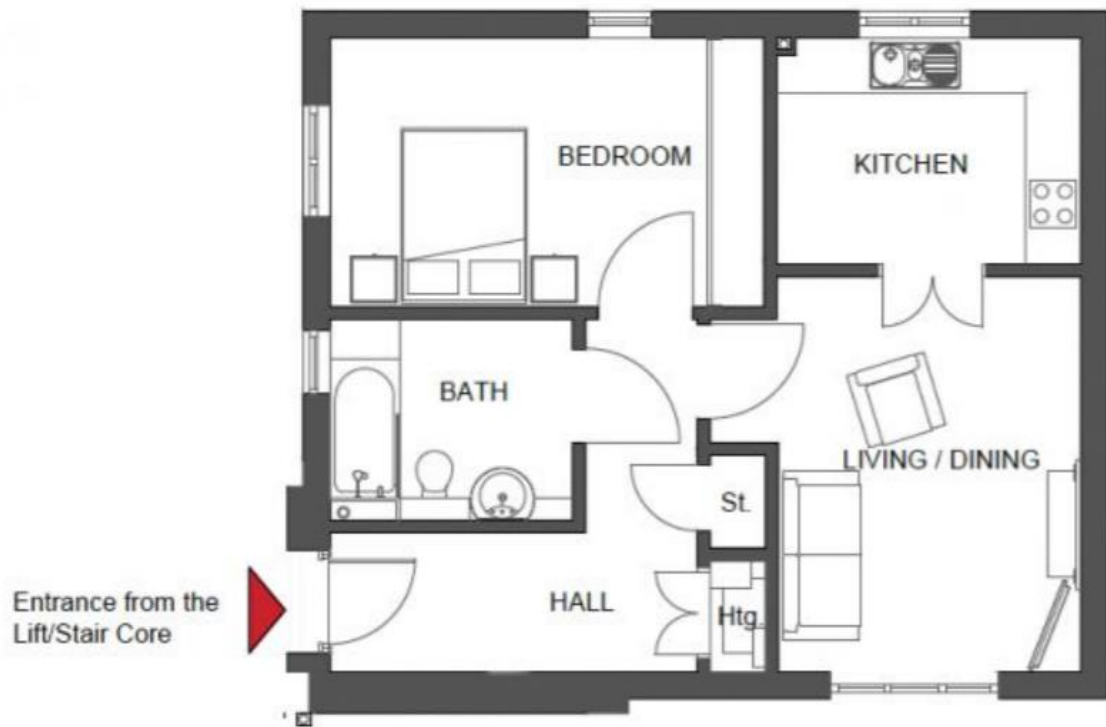
Inspired Villages apartments are covered by a 10-year NHBC guarantee. Apart from the fixtures and fittings described, the apartments are unfurnished. Our photographs and floorplans are purely illustrative. We advise customers to seek independent advice, support and representation as appropriate in connection with buying a property at an Inspired Village.

Service charges and event fees apply

Austin Heath

Inspired in Warwick

594 SQ. FT.



11 Gallagher Court Triangular Ship

A beautiful modern home

A comfortable home with well-planned proportions. The generous double-bedroom and stand-alone bathroom sit opposite a traditional living space and fully-equipped kitchen. Clever design and natural light ensure this home makes the most of its space and because it comes with everything you need, you can move straight in.