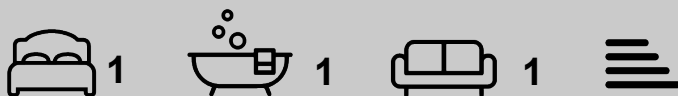




123a Soundwell Road, Bristol, BS16 4RD

**£1,300 Per month**

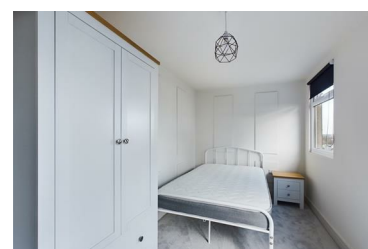


Welcome to this BRAND NEW apartment — one of four in a stylish conversion that is days from completion! Offering contemporary open-plan living in the heart of Staple Hill. This ground-floor apartment boasts a private garden, perfect for enjoying the outdoor space, with direct access from your bedroom.

Inside, enjoy a fully refurbished interior with an open plan living area and modern kitchen, a shower room and a separate double bedroom. The studio has been designed to maximise space — ideal for a professional or a couple wanting comfort, convenience, and a bit of outside space.

Located just minutes' walk from Staple Hill High Street, you have a wide selection of independent shops, cafés, pubs and essential services on your doorstep. Commuting is easy with excellent transport links close by and regular bus routes into Bristol city centre.

- Ground floor garden apartment
- Open plan living/Kitchen
- Double bedroom with access to the garden
- Fantastic transport links
- Ideal for couples or professionals
- BRAND NEW
- Modern shower room
- Excellent location
- Close to local amenities



375 Gloucester Road Bristol, BS7 8TN

Tel: 0117 244 2360 Email: [enquiries@missiatoestates.com](mailto:enquiries@missiatoestates.com)