



Individual Villa 190

La Manga Club

£2.950.000

- 3.189 m2 plot
- 838 m2 Construction
- Six Bedrooms
- Double Garage
- Front Line Golf
- High Quality Finish
- Under Floor Heating
- Gym and Sauna
- Infinity Pool and Jacuzzi

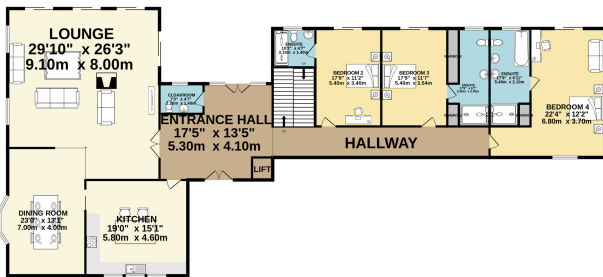
Individual Villa 190 La Manga Club

£2.950.000

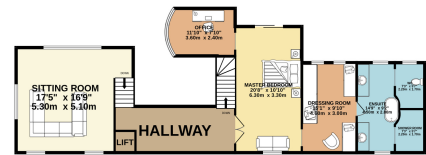
Quite simply incomparable to anything else on La Manga Club, this Individual Villa sits quietly on a mature and well-screened corner plot, adjacent to the Grand Hyatt Hotel and golf course. Without any doubt, this magnificent and exquisitely presented property represents the true essence of luxury living and you will understand why. An inviting entrance hall leads you to the main terrace overlooking the impressive infinity pool, enjoying what could be one of the most incredible views in the Resort. The large lounge area enjoys access to the terrace and a separate diner area, with beautiful Juliet windows and access to the well-proportioned kitchen. All floors have lift access. Three bedrooms with their respective ensuites can be found on this main level, all with quality sliding doors directly to the outside area. The master suite upstairs will be the delight of many, with its own terrace and dressing room, an incredible ensuite with an impressive shower room and bathtub, and even a private lounge upstairs, to sit and relax while admiring the landscape and views. It's not only the inside that will captivate you. The villa boasts very extensive outdoor living, so making the most of the magnificent Spanish weather will be as easy as just stepping outside. With such refined features as underfloor heating, electric shutters, central aircon, and many high-quality finishes, this astonishing villa from 2006 exudes majesty and will impress everyone. The lower level boasts two additional bedrooms, another kitchen, a snooker area, storage, and even a bar! It is not missing anything! If that wasn't enough, the property boasts a sauna and a gymnasium which makes the property even more complete. Do not miss this hidden gem and discover this fantastic opportunity.

Community fees: 4836.79€ discount included.

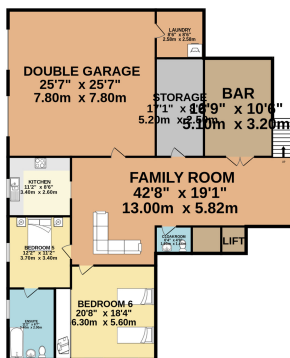
MAIN FLOOR
2990 sq.ft. (277.8 sq.m.) approx.



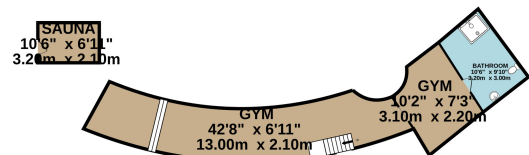
1ST FLOOR
1253 sq.ft. (116.4 sq.m.) approx.



LOWER LEVEL
2414 sq.ft. (224.2 sq.m.) approx.



GYM AND SAUNA
877 sq.ft. (81.5 sq.m.) approx.



TOTAL FLOOR AREA : 7534 sq.ft. (699.9 sq.m.) approx.

Whilst every attempt has been made to ensure the accuracy of the floorplan contained here, measurements of doors, windows, rooms and any other items are approximate and no responsibility is taken for any error, omission or mis-statement. This plan is for illustrative purposes only and should be used as such by any prospective purchaser. The services, systems and appliances shown have not been tested and no guarantee as to their operability or efficiency can be given.
Made with Metropix ©2023

