



OXFORD FAMILY ESTATES  
Property Sales and Services



# Stones Close, Hogsthorpe, Skegness, PE24 5NZ

£185,000

🛏️ 2 🚿 1 🚻 2



Oxford Family Estates are pleased to offer a great opportunity to purchase a good sized 2 bedroom detached bungalow with a lovely sized garden & stunning open views across the adjoining countryside. The property is ideal for someone looking to put their own stamp on a property and get it done to your liking. The bungalow would make a lovely home with a rural feel set on the edge of the village, all for a reasonable price.

### Entrance Hallway

**Lounge** 4.11m max x 3.72m max (13'5" max x 12'2" max)

**Conservatory** 2.80m x 1.75m (9'2" x 5'8")

**Main Bedroom** 3.13m max x 4.52m max (10'3" max x 14'9" max)

**Kitchen** 2.68m max x 4.52m max (8'9" max x 14'9" max)

**Bedroom 2** 2.91m x 3.21m (9'6" x 10'6")

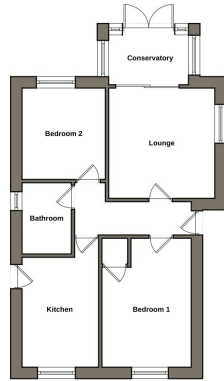
**Bathroom** 1.73m x 2.50m max (5'8" x 8'2")

### Single Garage

### Outside

Pull in from the road services this bungalow with and one other, with a nice front garden and long drive with space for multiple vehicles to garage. Lovely enclosed rear garden, with plenty of potential. Rear boundary overlooks open farmland.





Floorplan is indicative of layout only and should not be used for accurate measurement or structural purposes.

- **\*\*NO ONWARD CHAIN\*\***
- 2 bedroom
- Bay window Lounge
- Large rear gardens
- Driveway and Garage
- Detached Bungalow
- Large Kitchen
- Small Conservatory
- Views across fields
- Tax Band B, EPC rating E.



Score	Energy rating	Current	Potential
92+	A		
81-91	B		
69-80	C		73 C
55-68	D		
39-54	E	43 E	
21-38	F		
1-20	G		



OXFORD FAMILY ESTATES  
Property Sales and Services

