

## Stones Close, Hogsthorpe

£185,000

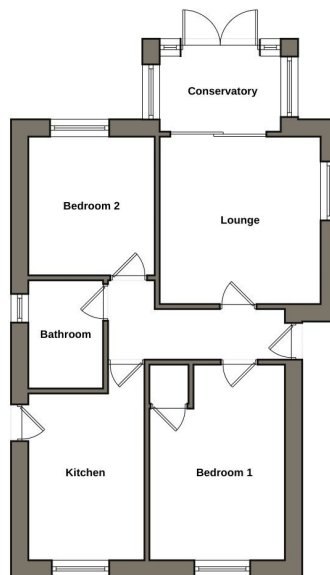
🛏️ 2 🚿 1 🚗 2



Oxford Family Estates are pleased to offer a great opportunity to purchase a good sized 2 bedroom detached bungalow with a lovely sized garden & stunning open views across the adjoining countryside. The property is ideal for someone looking to put their own stamp on a property and get it done to your liking. The bungalow would make a lovely home with a rural feel set on the edge of the village, all for a reasonable price.

## Key Features

- **\*\*NO ONWARD CHAIN\*\***
- 2 bedroom
- Bay window Lounge
- Large rear gardens
- Driveway and Garage
- Detached Bungalow
- Large Kitchen
- Small Conservatory
- Views across fields
- Tax Band B. EPC Rating E.



Floorplan is indicative of layout only and should not be used for accurate measurement or structural purposes.