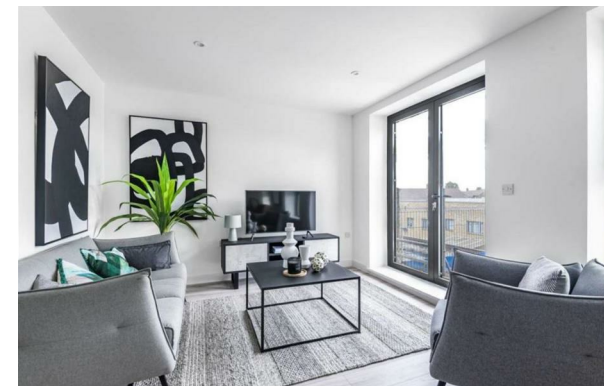




RESIDENTIAL



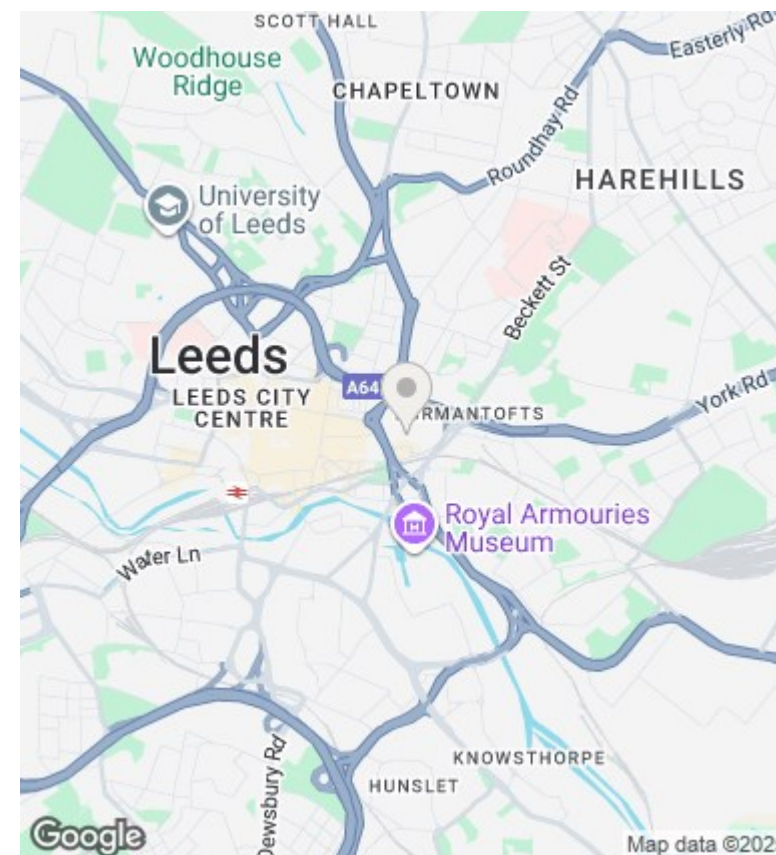
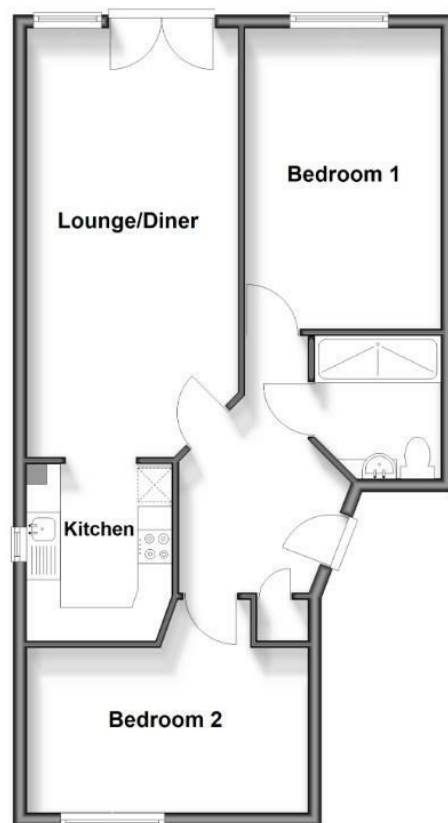
111 St. Cecilia Street, Leeds, West Yorkshire, LS2 7PA

Prices from £199,950

- Project Completion Q2 2026
- NET Yields of 6.5%
- Excellent City Centre Location
- White Goods Included
- High Spec Finish

Unit 1 Feast Field, Horsforth, Leeds, LS18 4TJ
0113 3224 345

info@tkiproperty.co.uk
www.tkiproperty.co.uk



Directions

Viewings

Viewings by arrangement only. Call 0113 3224 345 to make an appointment.

Council Tax Band

EPC Rating:

| Energy Efficiency Rating | | |
|---|---------|-------------------------|
| | Current | Potential |
| Very energy efficient - lower running costs | | |
| (92 plus) A | | |
| (81-91) B | | |
| (69-80) C | | |
| (55-68) D | | |
| (39-54) E | | |
| (21-38) F | | |
| (1-20) G | | |
| Not energy efficient - higher running costs | | |
| England & Wales | | EU Directive 2002/91/EC |