



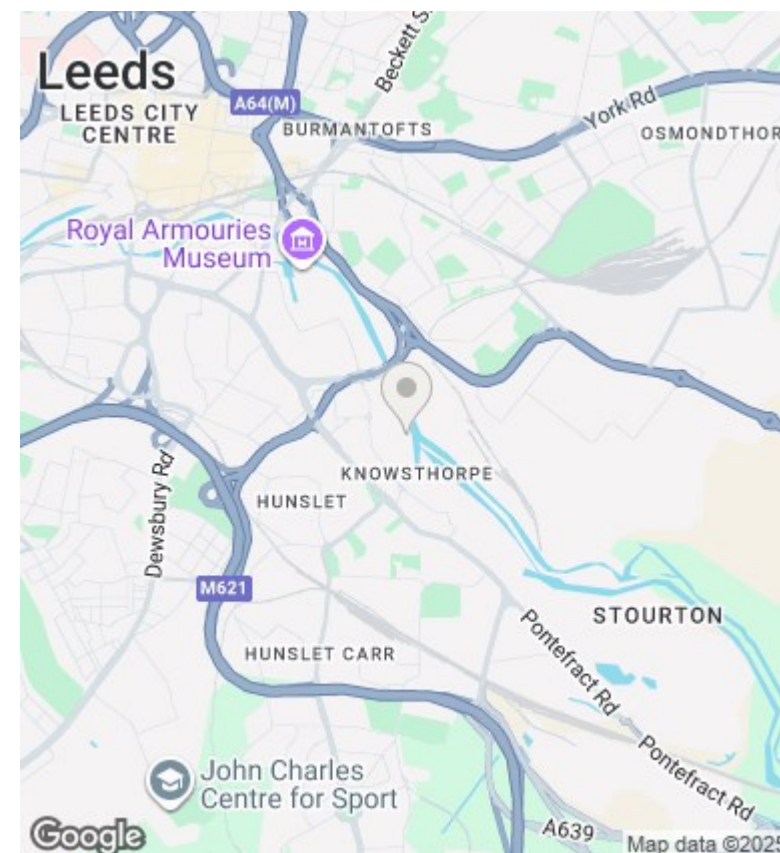
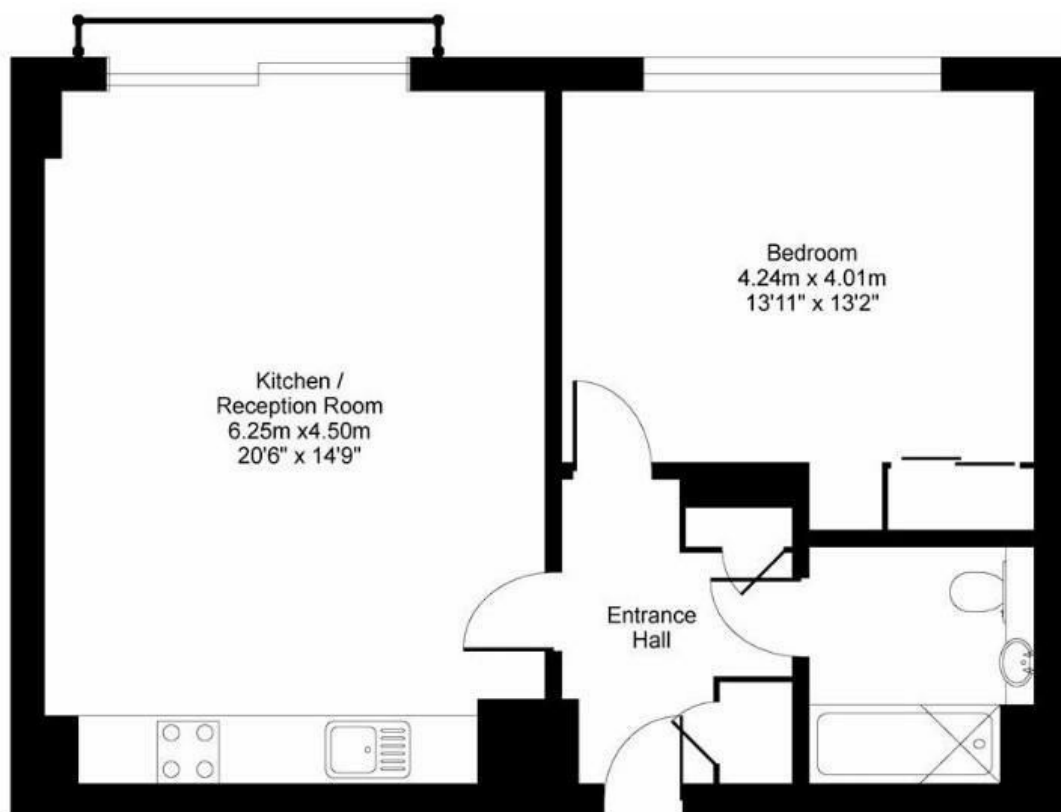
RESIDENTIAL



24 Aire Quay, Hunslet, Leeds, LS10 1GA

Asking price £152,500

- Completed and Tenanted paying £925.00 per month
- Tenanted until April 2025
- A lovely short walk by the River Aire into the city centre
- Larger than average apartment
- 1x Parking + Visitors Parking



Directions

Viewings

Viewings by arrangement only. Call 0113 3224 345 to make an appointment.

Council Tax Band

EPC Rating:

Energy Efficiency Rating		
	Current	Potential
Very energy efficient - lower running costs		
(92 plus) A		
(81-91) B		
(69-80) C		
(55-68) D		
(39-54) E		
(21-38) F		
(1-20) G		
Not energy efficient - higher running costs		
England & Wales	EU Directive 2002/91/EC	