

LYMINGTON  
FOUR  
BEDROOM  
HOME

BLOOR HOMES



A four bedroom detached home with a spacious lounge, fantastic open plan kitchen / dining area featuring French doors leading to the rear garden and a utility cupboard. Upstairs, there are four bedrooms with the master bedroom benefitting from an en suite shower room and fitted wardrobes.

LYMINGTON

A STUNNING FOUR BEDROOM  
DETACHED HOME

**LYMINGTON  
FOUR  
BEDROOM  
HOME**

**FIRST FLOOR:**

**BEDROOM 1**  
2.78m x 3.21m  
9'1" x 10'6"

**EN SUITE**

**BEDROOM 2**  
3.16m x 3.19m  
10'4" x 10'6"

**BEDROOM 3**  
2.45m x 3.15m  
8'0" x 10'4"

**BEDROOM 4**  
2.55m x 2.29m  
8'4" x 7'6"

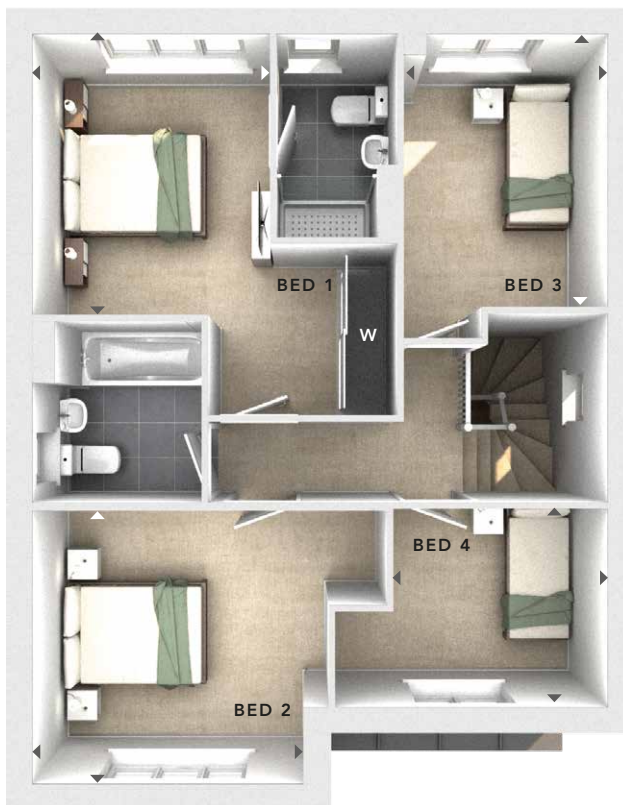
**BATHROOM**

**GROUND FLOOR:**

**LOUNGE**  
3.71m x 4.37m  
12'2" x 14'4"

**KITCHEN / DINING**  
6.71m x 4.25m  
22'0" x 13'11"

**CLOAKS**



**FIRST FLOOR**



**GROUND FLOOR**

W	- Fitted Wardrobes
U	- Utility Cupboard
△	- External Access
◀▶	- Measurement Points
<b>486 MCAT RENDER 5.0</b>	



These particulars are intended as a preliminary guide for prospective purchasers and should not be relied upon. The elevational treatment for individual house types shows a typical arrangement. Details of materials and design treatments may vary. Any artist impressions shown are not intended to represent any particular plot. Purchasers are advised to inspect the layout plan to establish the arrangement of the house and surrounding property. Internal layouts show a general arrangement which may vary from plot to plot. Room sizes given are approx. overall finished room sizes and subject to normal building tolerances (i.e. ± 75mm). In all instances purchasers are advised to inspect plot specific information available from our sales team. Nothing in these particulars or verbal assurance shall form or constitute part of any contract, and are given without any responsibility on behalf of Bloor Homes.