

£1,775 pcm
Aegean Apartments, Royal Victoria, E16 1AR



1

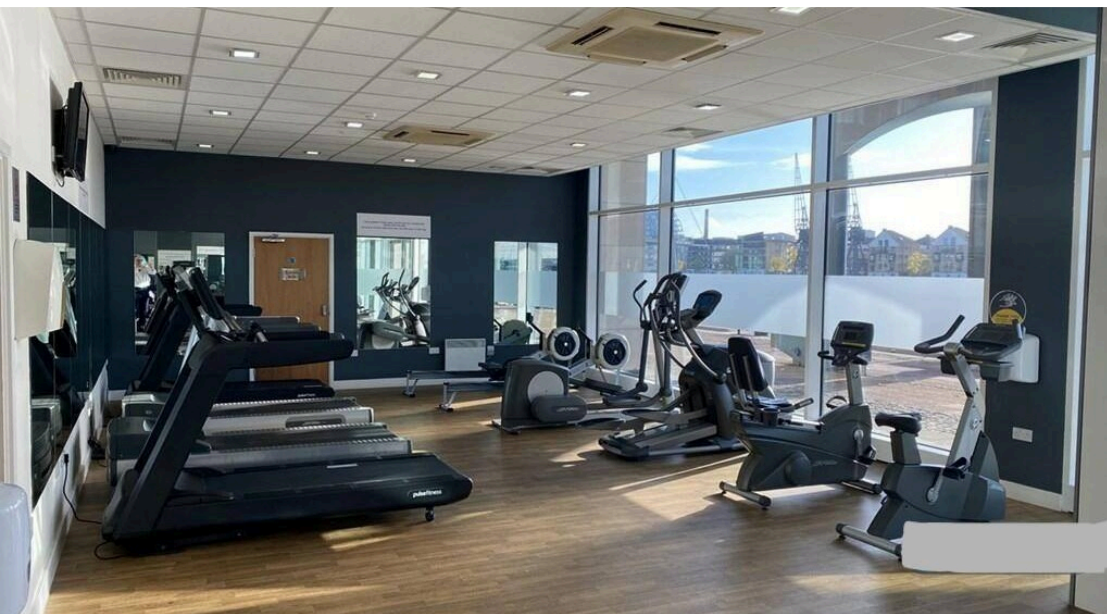
Bedroom



1

Bathroom

£1,775 pcm
Aegean Apartments, Royal Victoria, E16 1AR



Available NOW Capital East Development 1 Bedroom Apartment Open Plan Lounge Fully Furnished Residents Only Gym 24 Hour Concierge Royal Victoria DLR/Excel

**** Available Now ****

Hawk & Eagle Property Consultants are pleased to present as a managing agents, this modern 1-bedroom apartment in the Capital East Development E16.

This spacious apartment boasts a large double bedroom, a bright and airy lounge which is open plan to a fully integrated kitchen and a modern bathroom suite. Further benefits include floor to ceiling windows which are double glazed, 24-hour concierge service and residents only gym.

This property is conveniently located within walking distance from Royal Victoria DLR station and the Emirates Cable Cars. There are also other excellent transport links and the A13 motorway on the development's doorstep. Local amenities are just moments away such as Tesco and the nearest shopping centre Gallions Reach is a few stops away on the DLR.

