



140 Pemberton Road
, Winstanley, WN3 6DB
Offers Over £150,000



140 Pemberton Road, Winstanley, WN3 6DB

****PERIOD PROPERTY****

A delightful period terrace cottage, full of character and period features, built circa 1765. Located in the popular Winstanley district of Wigan.

This charming property has accommodation over two storeys, including lounge, kitchen / diner, two bedrooms and a family bathroom.

Externally there is a large garden of approx. 130ft in length, with the added benefit of a period outbuilding providing useful ancillary space with the potential for an garden office / studio (subject to any necessary consents and permissions).

These cottages rarely come up for sale and we would recommend an early viewing to avoid disappointment.



Lounge

14'2" x 12'1" (4.34 x 3.7)

Kitchen / Diner

16'10" x 14'2" (5.15 x 4.34)

Landing

Bedroom 1

14'2" x 12'0" (4.34 x 3.68)

Bedroom 2

16'10" x 7'0" (5.15 x 2.15)

Bathroom

13'9" x 6'10" (4.20 x 2.10)

Garden / Studio

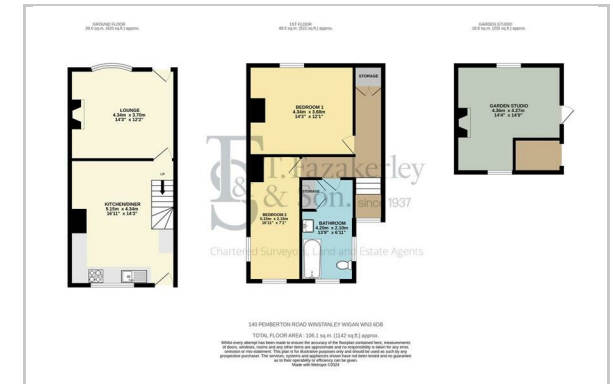
14'3" x 14'0" (4.36 x 4.27)

Aerial View

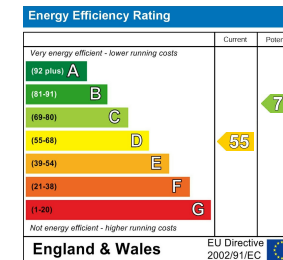
Area Map



Floor Plan



Energy Efficiency Graph



These particulars, whilst believed to be accurate are set out as a general outline only for guidance and do not constitute any part of an offer or contract. Intending purchasers should not rely on them as statements of representation of fact, but must satisfy themselves by inspection or otherwise as to their accuracy. No person in this firm's employment has the authority to make or give any representation or warranty in respect of the property.

3 Wrightington Street, Wigan, Greater Manchester, WN1 2AZ
Tel: 01942 242 636 Email: Info@fazakerleysharpe.co.uk www.fazakerleysharpe.co.uk