



520 Holden Road
Leigh, WN7 2JJ
Price Guide £175,000



520 Holden Road, Leigh, WN7 2JJ

****IN A GENEROUSLY SIZED PLOT****

A superb opportunity for First Time Buyers, Families or Investors.

This property has been recently renovated with a new kitchen and bathroom, with the benefit of three bedrooms, front and rear gardens together with off road parking.

There are amenities within walking distance, including restaurants, a convenience store, a dentist and pharmacist with the Bridgewater Canal a short walk away.

See floor plan for site plan identifying the area of the plot size.



Lounge

14'9" x 14'7" (4.5 x 4.45)
With carpeted flooring, feature fire place, open access to the dining room and first floor.

Kitchen / Dining Room

14'7" x 8'5" (4.47 x 2.59)
Recently fitted incorporating oven with stainless steel extractor hood, wine fridge together with a range of appliances.

Bedroom 1

14'7" x 8'7" (4.47 x 2.62)
A generously sized double bedroom with carpeted flooring.

Bedroom 2

8'7" x 7'1" (2.62 x 2.16)
With carpeted flooring.

Bedroom 3

6'11" x 6'7" (2.11 x 2.01)
With carpeted flooring.

Bathroom

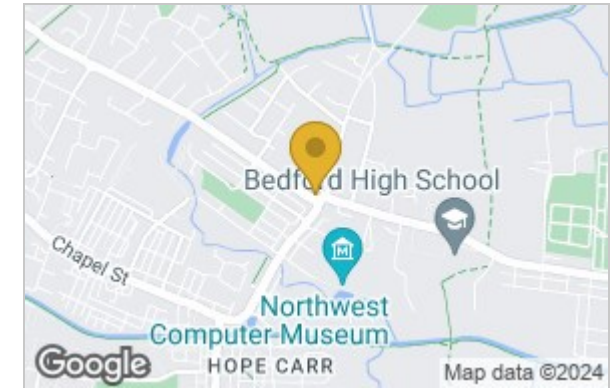
With tiled flooring, pedestal basin, heated towel rail, w/c, walk in shower

Rear Garden

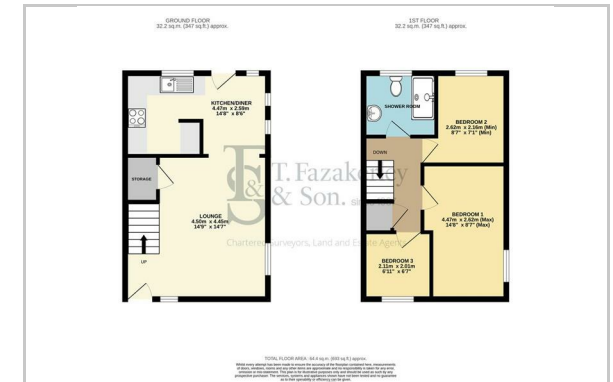
Laid to lawn encompassed within a timber feather edge board fenced boundary.



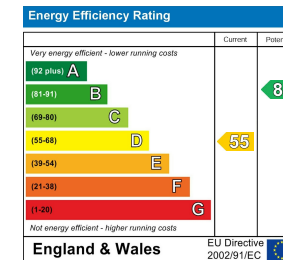
Area Map



Floor Plan



Energy Efficiency Graph



These particulars, whilst believed to be accurate are set out as a general outline only for guidance and do not constitute any part of an offer or contract. Intending purchasers should not rely on them as statements of representation of fact, but must satisfy themselves by inspection or otherwise as to their accuracy. No person in this firm's employment has the authority to make or give any representation or warranty in respect of the property.