



2 Floors



4 Bedrooms



1 En suite

HILLCOTT FOUR BEDROOM HOME

A four bedroom detached home with spacious lounge and fantastic open plan kitchen / dining and family area featuring a bay window and French doors leading to the rear garden.

Upstairs, there are four bedrooms with the master bedroom benefitting from fitted wardrobes and en suite facilities.

HILLCOTT FOUR BEDROOM HOME

✦ DIMENSIONS

First Floor:

Bedroom 1

2.82m x 3.28m
9'3" x 10'9"

En Suite

Bedroom 2

3.16m x 3.18m
10'4" x 10'5"

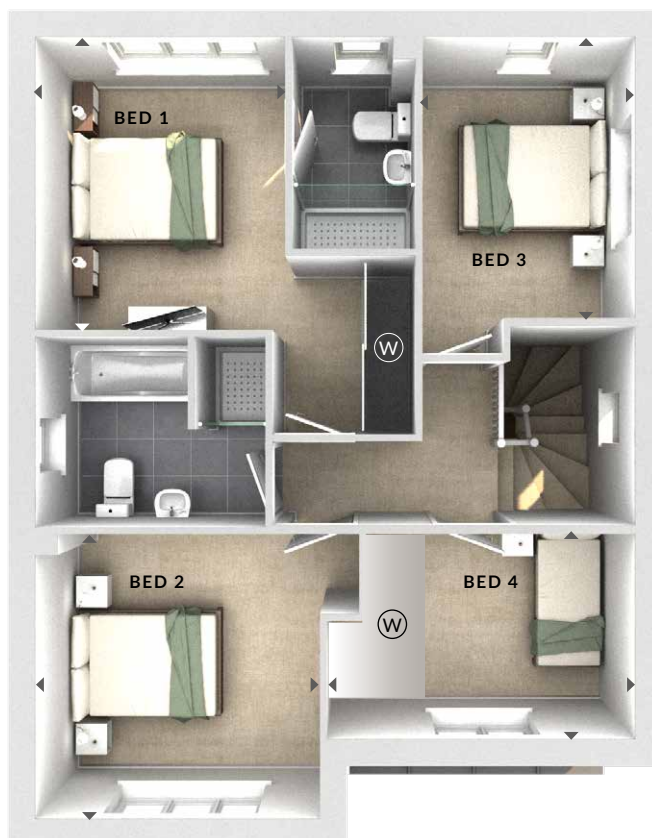
Bedroom 3

2.37m x 3.15m
7'9" x 10'4"

Bedroom 4

3.48m x 2.28m
11'5" x 7'6"

Bathroom



First Floor

Ground Floor:

Lounge

3.76m x 4.77m
12'4" x 15'8"

Kitchen / Dining / Family

6.71m x 3.85m
22'0" x 12'8"

(U) Utility

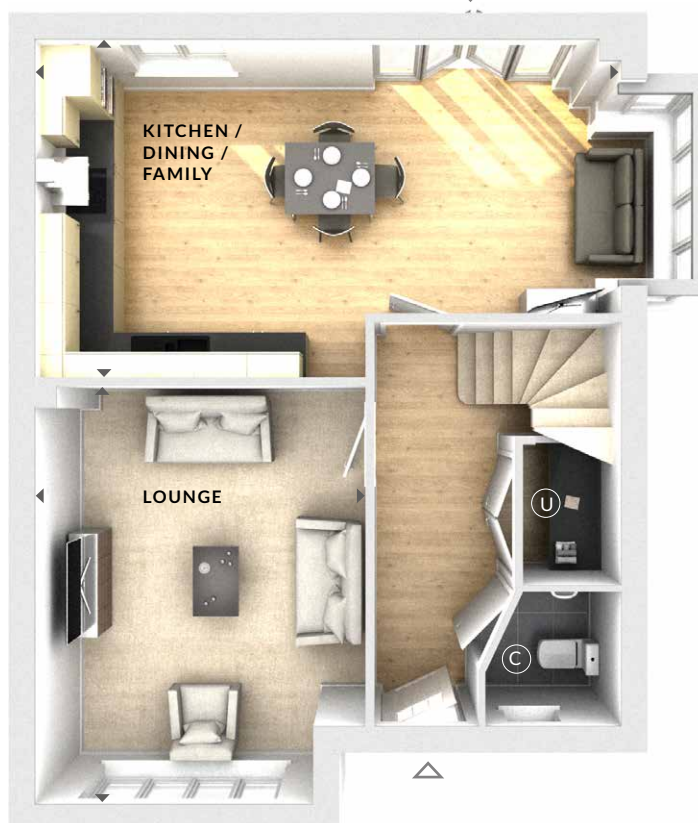
(W) Wardrobes

*Wardrobes to bed 4 indicated in selected plots only. Please speak to Sales Advisor for details.

(C) Cloaks

◀ ▶ Measurement Points

△ External Access



Ground Floor