



Old Great North Road, Stibbington

£375,000





Originally dating back to 1850, Station Master's Cottage is a charming Grade II listed former station house, nestled in the well connected and picturesque village of Stibbington. Converted from two cottages in the 1960's and lovingly maintained ever since, the home blends period character with stylish modern comforts.

Inside, the bright living/dining room is full of charm, with cast iron radiators, a decorative fireplace, and two large front facing windows. The kitchen is the heart of the home, featuring an oil fired Rayburn, Italian oak worktops, and a floor to ceiling pantry, with French doors opening onto a low maintenance rear garden. A separate snug, utility room, and downstairs WC complete the ground floor.

Upstairs, three well proportioned bedrooms with built in storage are served by a smart, metro tiled shower room. With two off road parking spaces, attractive kerb appeal, and a blend of old and new, this is an ideal lock up and leave or stylish country base. Just a stone's throw from the River Nene and beautiful countryside walks, it's a perfect spot for those who love nature and peaceful village life.

Tenure: Freehold  
All Mains Services Connected  
Council Tax: Band B  
Grade II Listed

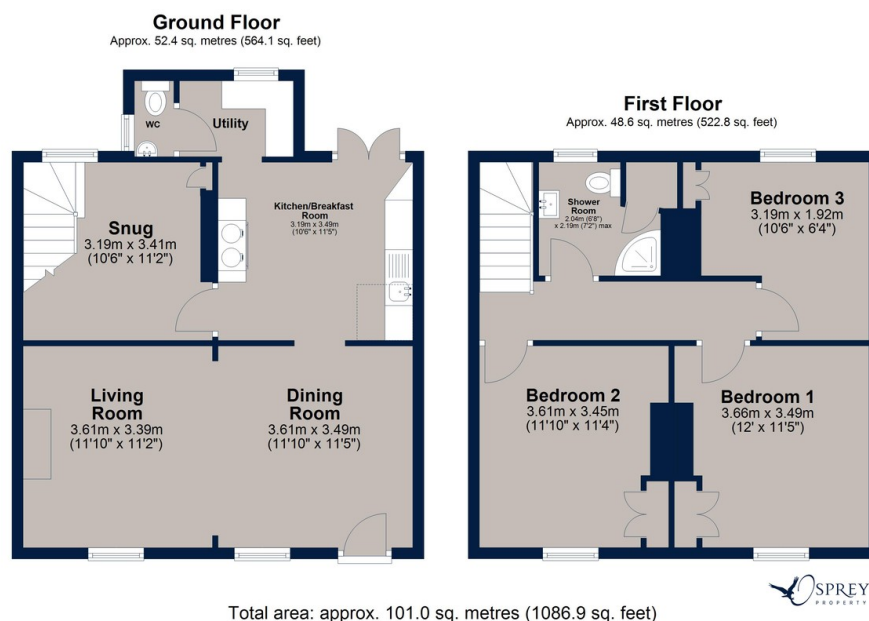








# Old Great North Road, Stibbington



Charming Grade II listed former station house in Stibbington, blending period features with modern style. Converted from two cottages, it offers spacious rooms, a Rayburn kitchen, snug, low maintenance garden, and off road parking, making an ideal lock up and leave.

Osprey Oakham  
4 Burley Road  
Oakham  
Rutland LE15 6DH  
01572 756675  
oakham@osprey-property.co.uk

Osprey Stamford  
7 Red Lion Street  
Stamford  
Lincolnshire, PE9 1PA  
01780 769269  
stamford@osprey-property.co.uk

Osprey Oundle  
6 Crown Court  
Market Place  
Oundle, PE8 4BQ  
01832 272225  
oundle@osprey-property.co.uk

Osprey Melton  
8 Burton Road  
Melton  
Leicestershire, LE13 1AE  
01664 778170  
melton@osprey-property.co.uk



Agents Note: Whilst every care has been taken to prepare these particulars, they are for guidance purposes only. All measurements are approximate, and are for general guidance purposes only and whilst every care has been taken to ensure their accuracy, they should not be relied upon, and potential buyers/tenants are advised to recheck the measurements