



Rock Road, Oundle  
Offers Over £149,995



A good size two bedroom flat, offering spacious and contemporary accommodation. Benefitting from central heating, double glazing and a private garden. The accommodation offers an entrance hall, kitchen, living/dining room, bathroom, two double bedrooms, and dedicated rear garden.

Oundle is a picturesque market town within 15 miles of Corby, Kettering and Peterborough, which all provide direct train links to London in under an hour. Located within walking distance of local amenities, excellent schools, restaurants and a weekly farmers market.

This property is offered with no forward chain, a viewing is strongly recommended.

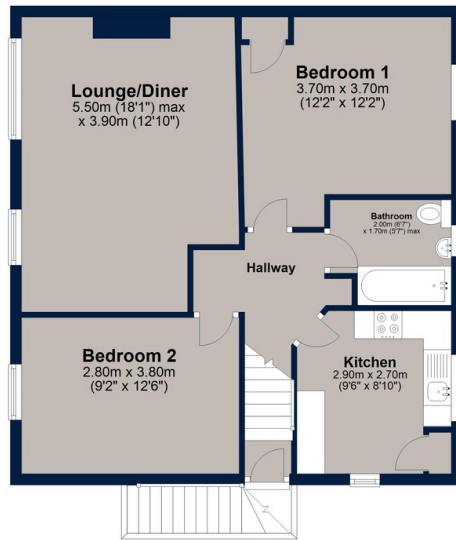
Tenure: Freehold  
All Mains Services Are Connected  
No Forward Chain  
Council Tax: Band A  
Management Fee Payable: £142.96 pa





# Rock Road, Oundle

## First Floor

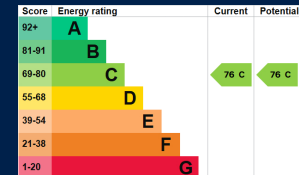


Total area: approx. 63.2 sq. metres (680.4 sq. feet)

Plan is for illustration purposes only and may not be representative of the property. Plan is not to scale. Plan produced by M-Photo  
Plan produced using PlanUp.



A spacious two bedroom top floor flat situated in the market town of Oundle available with no forward chain. Internal viewing is a must.



Osprey Oakham  
4 Burley Road  
Oakham  
Rutland LE15 6DH  
01572 756675  
oakham@osprey-property.co.uk

Osprey Stamford  
7 Red Lion Street  
Stamford  
Lincolnshire, PE9 1PA  
01780 769269  
stamford@osprey-property.co.uk

Osprey Oundle  
6 Crown Court  
Market Place  
Oundle, PE8 4BQ  
01832 272225  
oundle@osprey-property.co.uk

Osprey Melton  
8 Burton Road  
Melton  
Leicestershire, LE13 1AE  
01664 778170  
melton@osprey-property.co.uk



Agents Note: Whilst every care has been taken to prepare these particulars, they are for guidance purposes only. All measurements are approximate, and are for general guidance purposes only and whilst every care has been taken to ensure their accuracy, they should not be relied upon, and potential buyers/tenants are advised to recheck the measurements