



West Street Mews, Oundle
£485,000



Set over three floors, this highly desirable property is ideally located within minutes walk of the centre of Oundle. The accommodation comprises an entrance hall with a lovely stone tiled floor, a good size living/dining room, fully fitted kitchen/breakfast room, utility and guest cloakroom. The first floor contains the principal bedroom with two double, built in wardrobes and an en-suite bathroom, a further double bedroom, with its own en-suite shower room, and a smaller single bedroom. On the second floor are two more double bedrooms and a shower room.

To the rear of the property is an attractive courtyard garden which is extremely private, with side access from the front. Additionally, there are two allocated parking spaces to the front.

Located in a quiet mews setting off West Street through a gated private driveway, West Street Mews is a short stroll from Oundle marketplace.

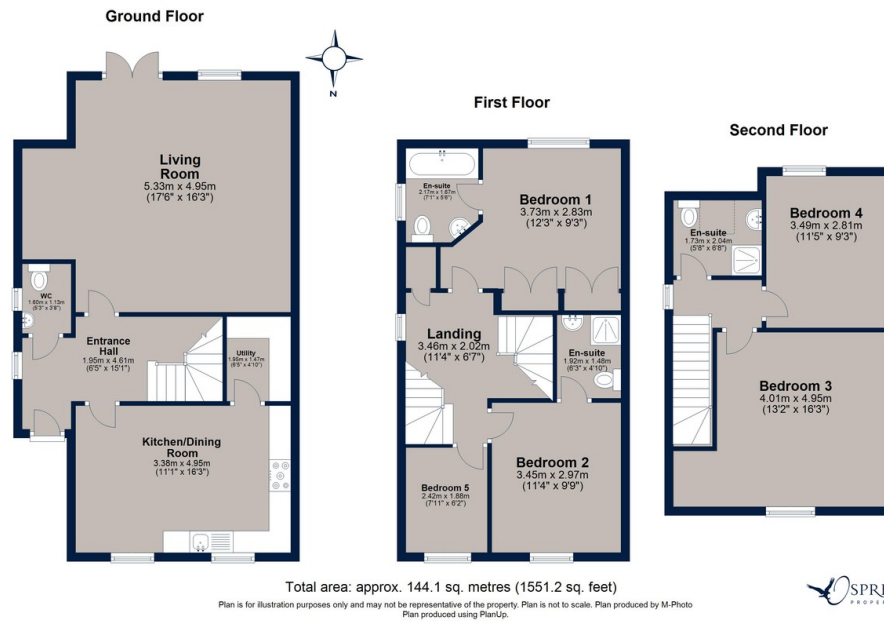
Offered with no forward chain.

Tenure: Freehold
All Mains Services Are Connected
Gas Central Heating
Council Tax: Band E
Communal Area Fees: £150 pa TBC





West Street Mews, Oundle



Perfectly situated for Oundle marketplace, this desirable, five-bedroom, three-bathroom town house offers a private courtyard garden and allocated parking. An ideal lock up and leave family home.

No forward chain.

Score	Energy rating	Current	Potential
92+	A		
81-91	B		83 B
69-80	C	71 C	
55-68	D		
39-54	E		
21-38	F		
1-20	G		

Osprey Oakham
4 Burley Road
Oakham
Rutland LE15 6DH
01572 756675
oakham@osprey-property.co.uk

Osprey Stamford
7 Red Lion Street
Stamford
Lincolnshire, PE9 1PA
01780 769269
stamford@osprey-property.co.uk

Osprey Oundle
6 Crown Court
Market Place
Oundle, PE8 4BQ
01832 272225
oundle@osprey-property.co.uk

Osprey Melton
8 Burton Road
Melton
Leicestershire, LE13 1AE
01664 778170
melton@osprey-property.co.uk



Agents Note: Whilst every care has been taken to prepare these particulars, they are for guidance purposes only. All measurements are approximate, and are for general guidance purposes only and whilst every care has been taken to ensure their accuracy, they should not be relied upon, and potential buyers/tenants are advised to recheck the measurements