



West Street Mews, Oundle
£460,000



Set over three floors, this highly desirable property is ideally located within minutes-walk of the centre of Oundle. The accommodation comprises an entrance hall with a lovely stone tiled floor, a good size living/dining room, fully fitted kitchen/breakfast room, utility and guest cloakroom. The first floor contains the principal bedroom with two double, built in wardrobes and an en-suite bathroom, a further double bedroom, with its own en-suite shower room, and a smaller single bedroom, perfect as a study or hobby room. On the second floor are two more double bedrooms and a shower room.

To the rear of the property is an attractive courtyard garden which is extremely private, with side access from the front. Additionally, there are two allocated parking spaces to the front.

Located in a quiet mews setting off West Street through a gated private driveway, West Street Mews is a short stroll from Oundle marketplace.

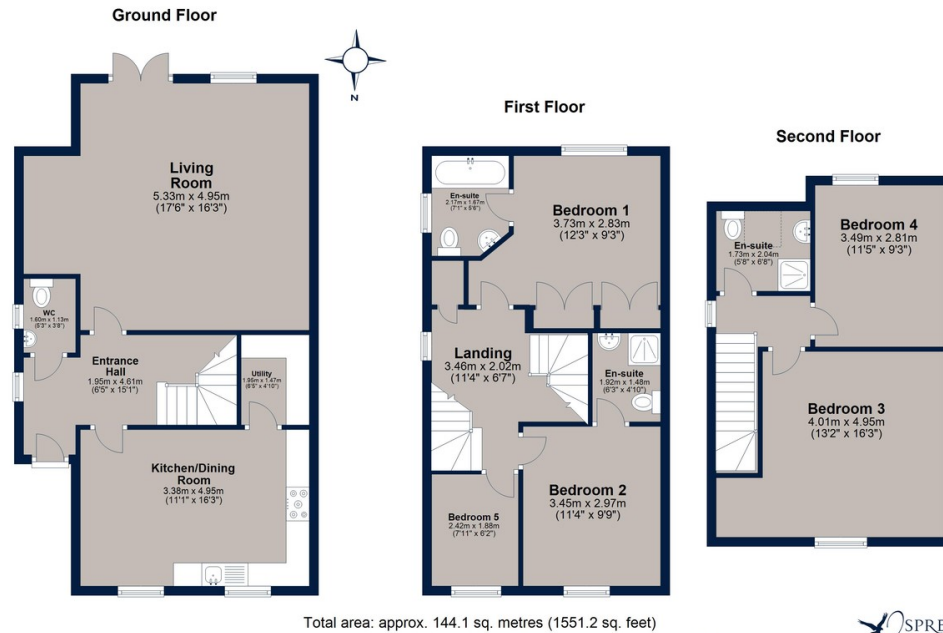
Offered with no forward chain.

Tenure: Freehold
All Mains Services Are Connected
Gas Central Heating
Council Tax: Band E
Communal Area Fees: £100 pa





West Street Mews, Oundle



Total area: approx. 144.1 sq. metres (1551.2 sq. feet)
 Plan is for illustration purposes only and may not be representative of the property. Plan is not to scale. Plan produced by M-Photo
 Plan produced using PlanUp.



Perfectly situated for Oundle marketplace, this desirable, five-bedroom, three-bathroom town house offers a private courtyard garden and allocated parking. An ideal lock up and leave family home.

No forward chain.

Score	Energy rating	Current	Potential
92+	A		
81-91	B		83 B
69-80	C	71 C	
55-68	D		
39-54	E		
21-38	F		
1-20	G		

Osprey Oakham
 4 Burley Road
 Oakham
 Rutland LE15 6DH
 01572 756675
 oakham@osprey-property.co.uk

Osprey Stamford
 7 Red Lion Street
 Stamford
 Lincolnshire, PE9 1PA
 01780 769269
 stamford@osprey-property.co.uk

Osprey Oundle
 6 Crown Court
 Market Place
 Oundle, PE8 4BQ
 01832 272225
 oundle@osprey-property.co.uk

Osprey Melton
 8 Burton Road
 Melton
 Leicestershire, LE13 1AE
 01664 778170
 melton@osprey-property.co.uk



Agents Note: Whilst every care has been taken to prepare these particulars, they are for guidance purposes only. All measurements are approximate, and are for general guidance purposes only and whilst every care has been taken to ensure their accuracy, they should not be relied upon, and potential buyers/tenants are advised to recheck the measurements