



Bevan Close, Warmington

£377,000





A modern three-bedroom detached property positioned within a small cul-de-sac in the popular village of Warmington. The local Primary School and village amenities are just a short walk away. Offered for sale with no forward chain, the property benefits from a garage, conservatory and large west facing rear garden. The accommodation comprises of a cloakroom / utility, living room, dining room / study, kitchen, three bedrooms, ensuite shower room and family bathroom. Viewing is highly recommended.

Warmington is a vibrant Northamptonshire village in close proximity to the border with Cambridgeshire. Surrounded by countryside, it has a Post Office and general store, public house, primary school and village hall. Further amenities can be found in the nearby town of Oundle, just 3 miles away.

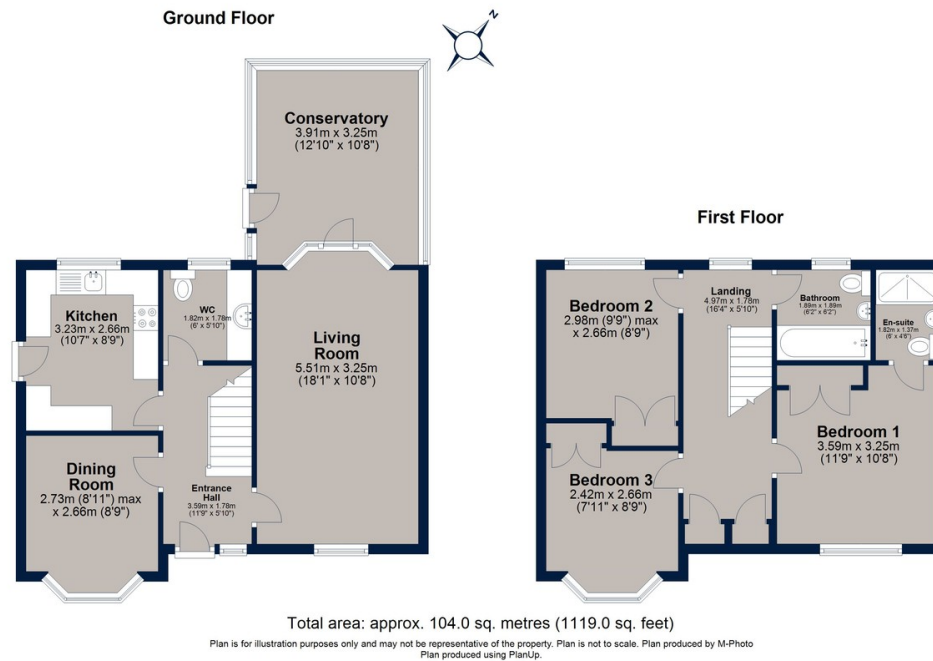
Tenure: Freehold  
All Mains Services Connected  
Gas Central Heating  
Council Tax Band: E  
No Forward Chain



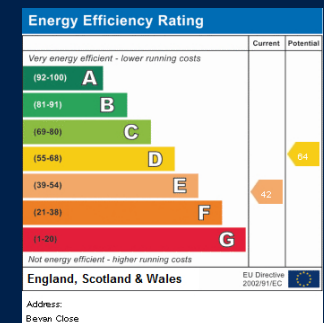




# Bevan Close, Warmington



Situated in a quiet cul-de-sac, this attractive modern family home enjoys a west-facing garden, garage and driveway, conservatory and utility. Offered with no chain, viewing is advised.



Osprey Oakham  
4 Burley Road  
Oakham  
Rutland LE15 6DH  
01572 756675  
oakham@osprey-property.co.uk

Osprey Stamford  
7 Red Lion Street  
Stamford  
Lincolnshire, PE9 1PA  
01780 769269  
stamford@osprey-property.co.uk

Osprey Oundle  
6 Crown Court  
Market Place  
Oundle, PE8 4BQ  
01832 272225  
oundle@osprey-property.co.uk

Osprey Melton  
8 Burton Road  
Melton  
Leicestershire, LE13 1AE  
01664 778170  
melton@osprey-property.co.uk

