

 4  3  3



St. Leonards Hill, *Windsor*

OSBORNE HEATH

A detached four bedroom, three bathroom family home with a driveway, studio and annexe.

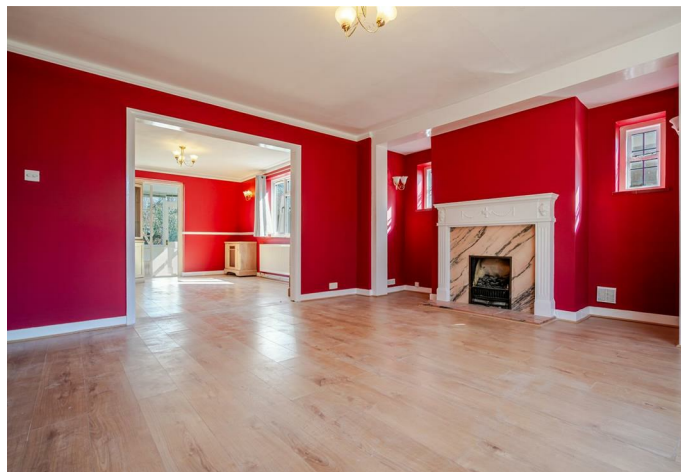
Downstairs there is a living room leading, dining room and conservatory leading out to the garden, separate kitchen and downstairs WC.

Upstairs there are four bedroom, en suite to the principal bedroom and a family bathroom.

Outside, there is a large garden and impressive driveway. There is also a separate annexe with shower room and kitchenette, plus a garden studio offering plenty of storage.

St Leonards Hill is a sought after private road in Windsor. Windsor has a wide range of shops and restaurants as well as the Castle, Great Park, Racecourse and Legoland. Nearby train stations include Windsor & Eton Central and Windsor & Eton Riverside where trains run to London Paddington (via Slough - Elizabeth Line) and London Waterloo. Nearby schools include Eton, St George's School, The Kings House, Oakfield, The Queen Anne, St Edwards, Trevelyan, Trinity St Stephen, Upton House, Windsor Boys and Windsor Girls. Windsor is also convenient for the M4, M25 and Heathrow Airport.

EPC rating E. Council Tax band G. Tenancy Length 12-36 months. Deposit £4038. Holding Deposit £807.00





APPROXIMATE FLOOR AREA

House - 156.20 sq m - 1681 sq ft
Annexe - 27.80 sq m - 299 sq ft
Studio - 17.60 sq m - 189 sq ft
Total - 201.60 sq m - 2169 sq ft
(Gross Internal Area)

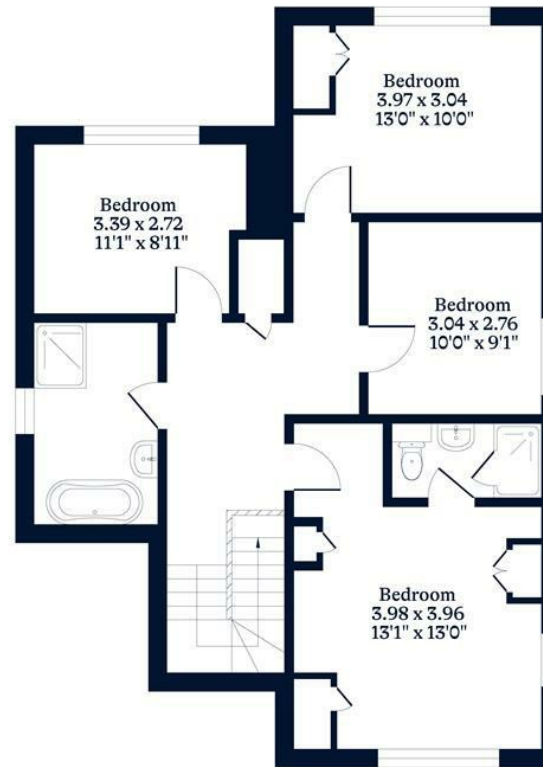
OH

NOT TO SCALE

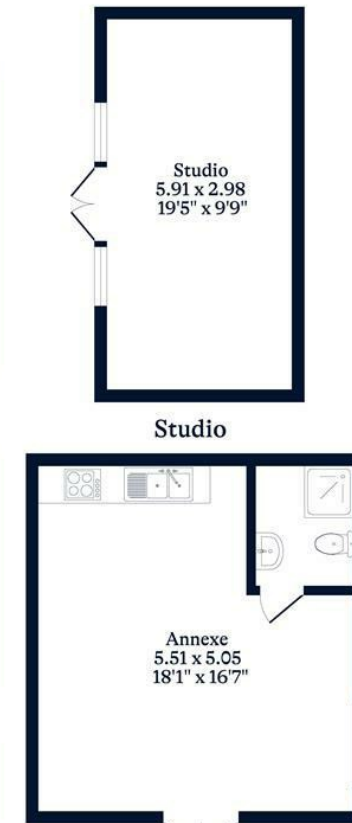
This plan is for illustration purposes only



Ground Floor



First Floor



Studio

Annexe

This plan is for layout guidance only. Not drawn to scale unless stated. Windows and door openings are approximate. Whilst every care is taken in the preparation of this plan, please check all dimensions, shapes and compass bearings before making any decisions reliant upon them.

OSBORNEHEATH.CO.UK