

 2  1  2



Holloway Drive, *Virginia Water*

OSBORNE HEATH

Set in the prestigious Holloway Drive Estate is this spacious two double bedroom, two bathroom apartment with access to onsite pool, gym tennis courts and grounds.

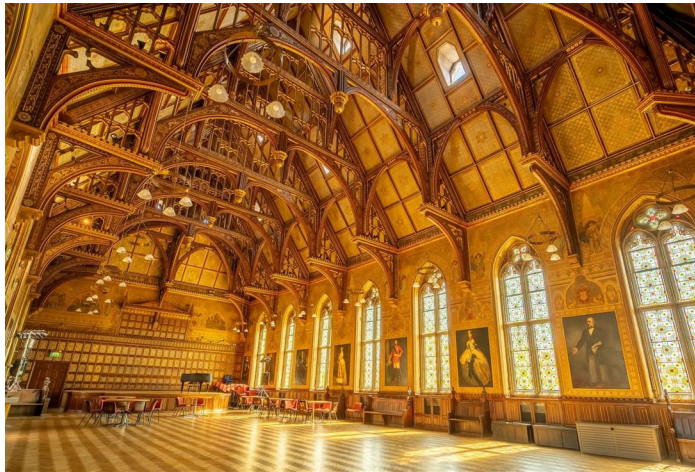
This second floor apartment has a south facing spacious living room, a kitchen with built-in appliances, utility room, master bedroom with built-in wardrobes and an en suite bathroom. There is a second double bedroom with built-in wardrobes and family bathrooms.

The Grange is part of the prestigious Holloway Drive estate in Virginia Water. The development is gated and has 24hr concierge, communal gardens, tennis court, gym, swimming pool, jacuzzi and sauna.

Holloway Drive is conveniently located in Virginia Water and the nearest station Virginia Water is not 0.7 miles where services run to London, Reading and Weybridge. Other local places of interest include Ascot Racecourse, Foxhills, Guards Polo Club, Queenwood, Virginia Water Lake, Windsor Castle and Windsor Great Park. Nearby schools include ACS, Bishopsgate, Lambrook, The Magna Carta, Manorcroft, Royal Holloway, St Ann's, Salesian, St Cuthbert's and Thorpe. By road Virginia Water is convenient for the M3, M4, M25 and Heathrow Airport.

EPC rating C. Council Tax Band G. Deposit £2,884. Holding Deposit £576. Lease Length 12-36 months.





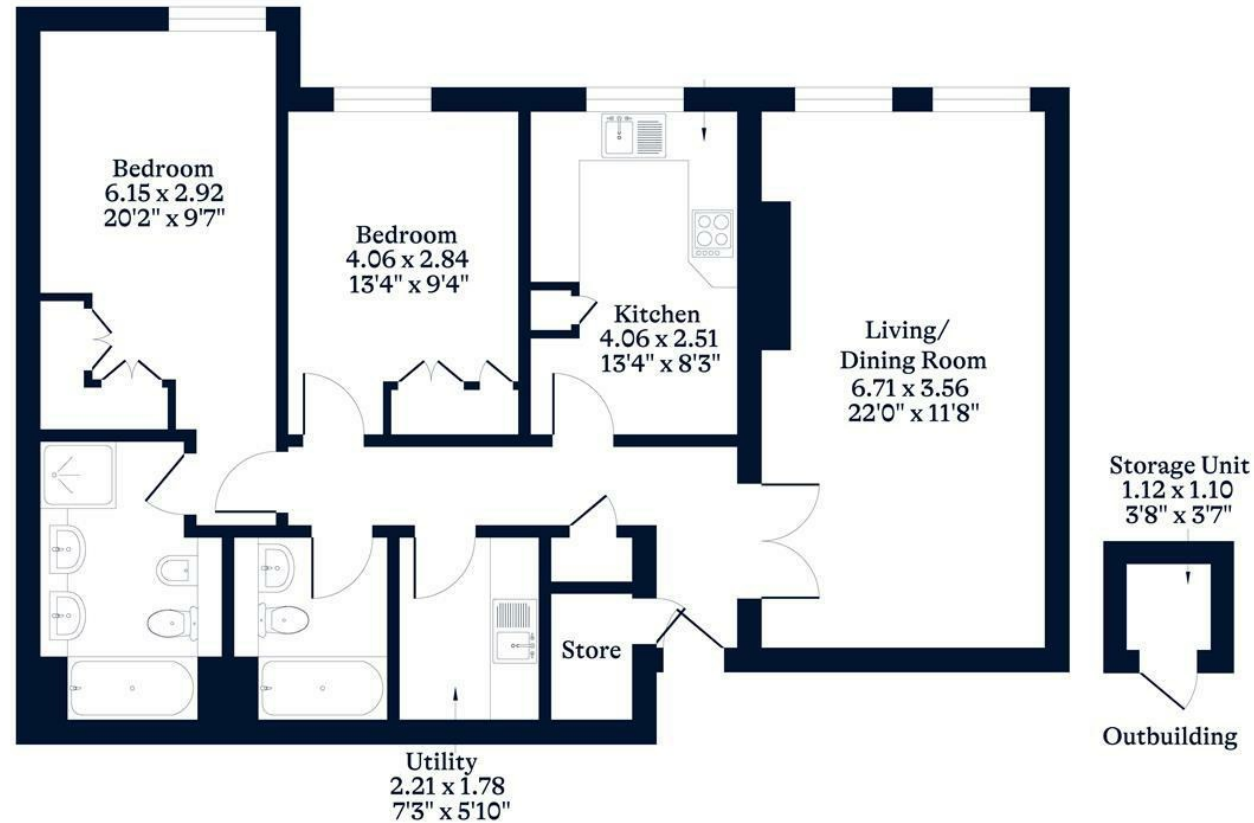
APPROXIMATE FLOOR AREA

Apartment - 93.20 sq m - 1003 sq ft
Outbuilding - 1.23 sq m - 13 sq ft
Total - 94.43 sq m - 1016 sq ft
(Gross Internal Area)



NOT TO SCALE

This plan is for illustration purposes only



Second Floor

This plan is for layout guidance only. Not drawn to scale unless stated. Windows and door openings are approximate. Whilst every care is taken in the preparation of this plan, please check all dimensions, shapes and compass bearings before making any decisions reliant upon them.

OSBORNEHEATH.CO.UK