

 1  1  1



Fountain Court, *Windsor*

OSBORNE HEATH

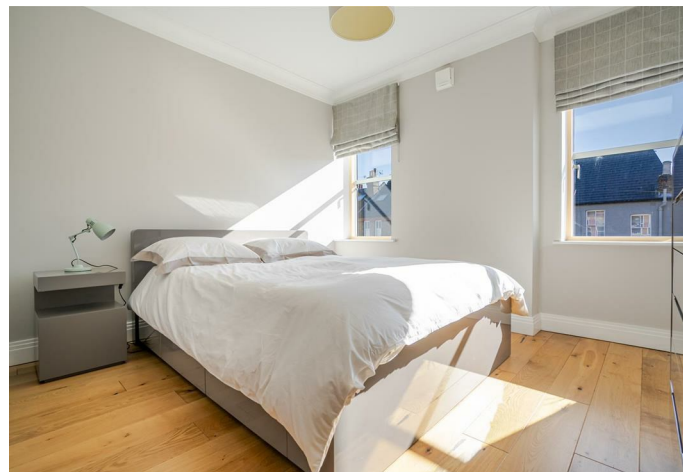
A modern, town centre apartment with a lift, underground parking available for a Short Let.

This first floor apartment is in very good condition and has underfloor heating throughout. The main room is an open-plan kitchen with integrated Bosch appliances plus living and dining areas, a double bedroom with en suite bathroom, and a guest WC.

Fountain Court has a secure entry system, allocated underground parking, visitor parking space, residents outdoor terrace and a lift. This apartment also comes with a lock-up store room.

The development is on Frances Road, in the popular Golden Triangle area of Windsor town centre. Windsor has a wide range of shops and restaurants as well as the Castle, Great Park, Racecourse and Legoland. Nearby train stations include Windsor & Eton Central and Windsor & Eton Riverside where trains run to London Paddington (via Slough) and London Waterloo. Windsor is also convenient for the M4, M25 and Heathrow Airport.

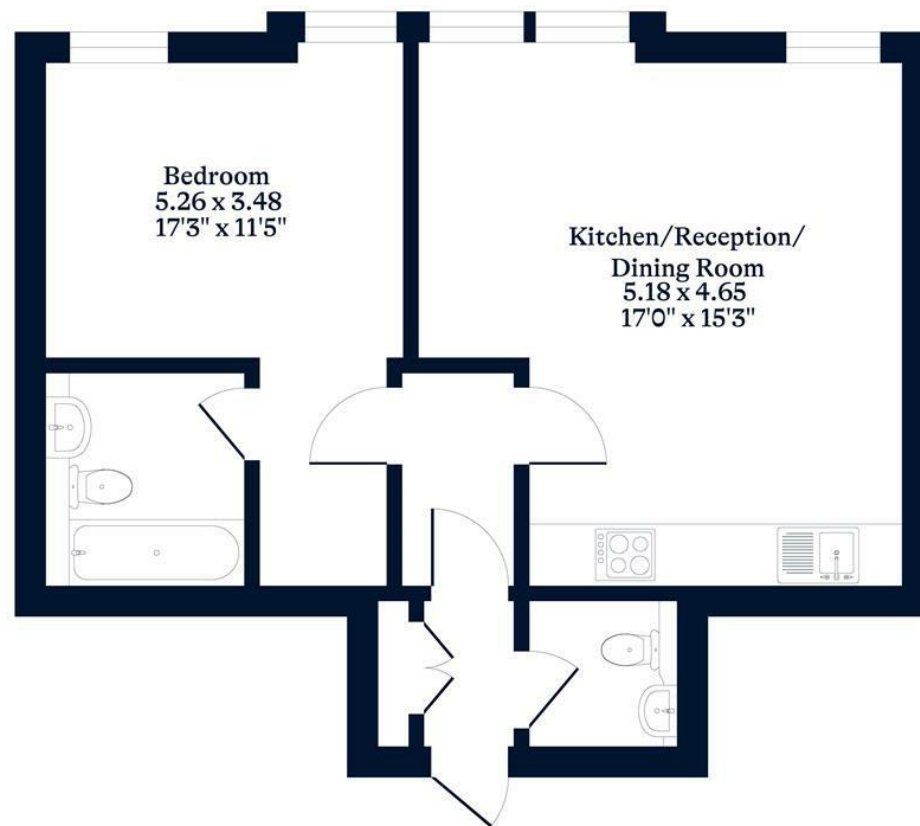
Tenancy Length Short Term. Deposit £3,057. Holding Deposit £611. EPC rating B. Council Tax band C.





APPROXIMATE FLOOR AREA
Apartment - 47.10 sq m - 508 sq ft
(Gross Internal Area)

NOT TO SCALE
This plan is for illustration purposes only



Second Floor

This plan is for layout guidance only. Not drawn to scale unless stated. Windows and door openings are approximate. Whilst every care is taken in the preparation of this plan, please check all dimensions, shapes and compass bearings before making any decisions reliant upon them.

OSBORNEHEATH.CO.UK