

 3  1  2



# Greenwich Court, *Windsor*

OSBORNE HEATH



# A modern three bedroom, two bathroom ground floor apartment with two gated parking spaces and no onward chain.

This ground floor apartment has an open-plan kitchen with Siemens appliances, central island, breakfast bar plus living and dining areas. There are also three bedrooms, one of which can be used as a study, two shower rooms and a large airing cupboard with storage.

Greenwich Court has a secure video entry system plus gated parking, where this apartment has two allocated spaces.

Greenwich Court is part of the Kensington Mews development, off St Leonards Road. Windsor has a wide range of shops and restaurants as well as the Castle, Great Park, Racecourse and Legoland. Nearby train stations include Windsor & Eton Central and Windsor & Eton Riverside where trains run to London Paddington (via Slough) and London Waterloo. Nearby schools include Eton, The Kings House, Oakfield, The Queen Anne, St Edwards, Trevelyan, Trinity St Stephen, Upton House, Windsor Boys and Windsor Girls. Windsor is also convenient for the M4, M25 and Heathrow Airport.

EPC rating C. Council Tax band D. Leasehold with 85 years remaining. Service Charge £2,643.44 pa. Ground Rent £520.08 pa.



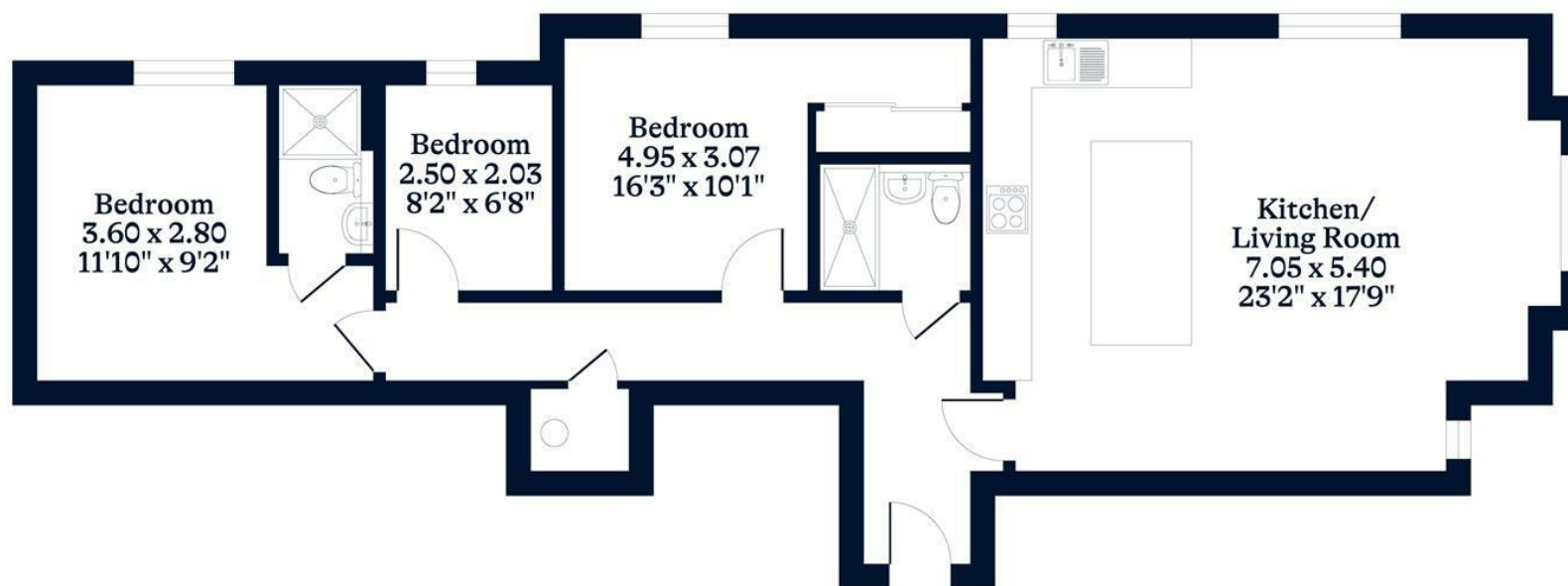




**APPROXIMATE FLOOR AREA**  
Apartment - 88.00 sq m - 947 sq ft  
(Gross Internal Area)



**NOT TO SCALE**  
This plan is for illustration purposes only



**Ground Floor**

This plan is for layout guidance only. Not drawn to scale unless stated. Windows and door openings are approximate. Whilst every care is taken in the preparation of this plan, please check all dimensions, shapes and compass bearings before making any decisions reliant upon them.

**OSBORNEHEATH.CO.UK**