

 3  1  2



# Turks Head Court, *Eton*

OSBORNE HEATH



# A spacious three double bedroom, two bathroom maisonette perfectly positioned just moments from Eton High Street.

This spacious ground floor maisonette has recently been repainted and has brand new wood effect flooring throughout.

The property has a bright lounge with a modern separate kitchen, three double bedroom and two bathrooms.

Turks Head Court is centrally positioned opposite South Meadow and moments from High Street. The maisonette is also within a short walk of Eton College, Windsor and Eton Riverside Station, Windsor Castle and local shops and restaurants. Eton is also convenient for the M4, M25 and Heathrow Airport. The area also has a good selection of state, private and international schools.

EPC rating C. Council Tax band D.

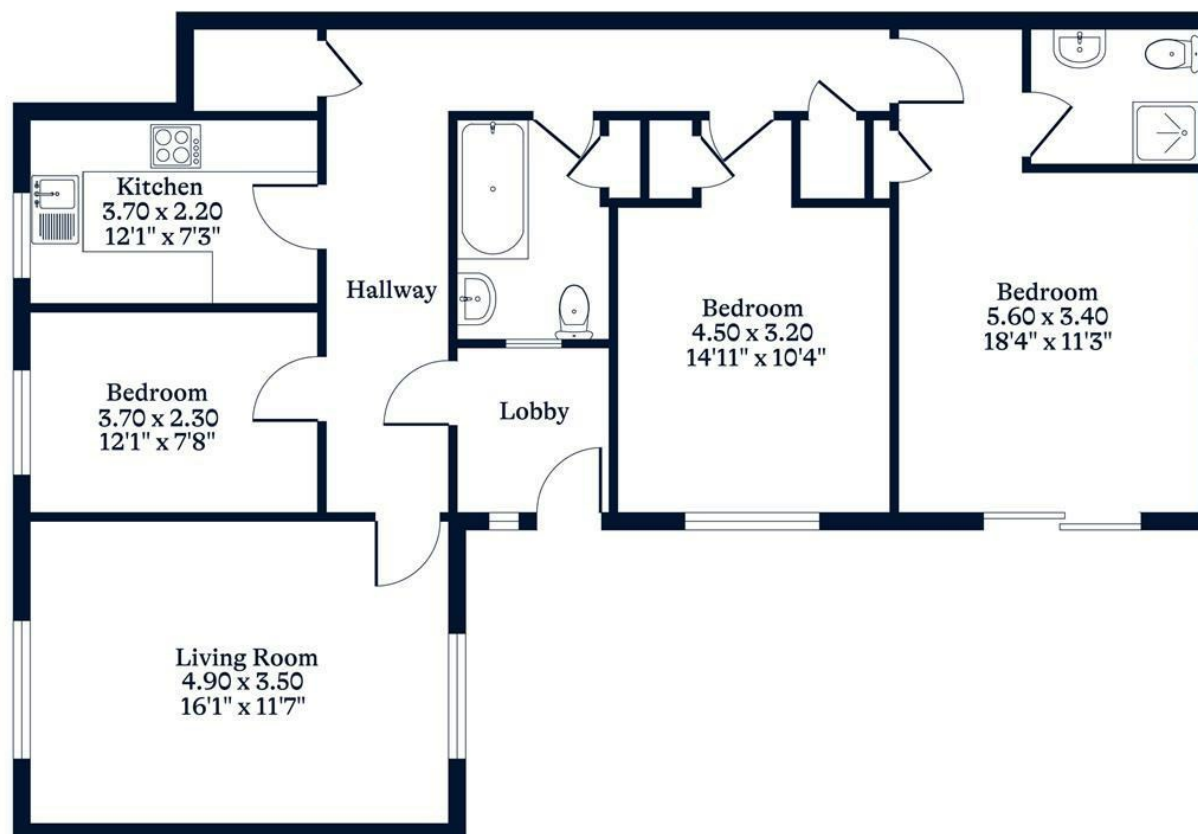




**APPROXIMATE FLOOR AREA**  
90.00 sq m - 969 sq ft  
(Gross Internal Area)



**NOT TO SCALE**  
This plan is for illustration purposes only



This plan is for layout guidance only. Not drawn to scale unless stated. Windows and door openings are approximate. Whilst every care is taken in the preparation of this plan, please check all dimensions, shapes and compass bearings before making any decisions reliant upon them.

**OSBORNEHEATH.CO.UK**